

These are the notes referred to on the following official copy

The electronic official copy of the title plan follows this message.

Please note that this is the only official copy we will issue. We will not issue a paper official copy.

This official copy was delivered electronically and when printed will not be to scale. You can obtain a paper official copy by ordering one from HM Land Registry.

This official copy is issued on 12 October 2021 shows the state of this title plan on 12 October 2021 at 15:52:46. It is admissible in evidence to the same extent as the original (s.67 Land Registration Act 2002). This title plan shows the general position, not the exact line, of the boundaries. It may be subject to distortions in scale. Measurements scaled from this plan may not match measurements between the same points on the ground.

This title is dealt with by the HM Land Registry, Wales Office .

© Crown copyright. Produced by HM Land Registry. Reproduction in whole or in part is prohibited without the prior written permission of Ordnance Survey. Licence Number 100026316.

Dyma'r nodiadau y cyfeirir atynt ar y copi swyddogol canlynol.

Mae'r copi swyddogol electronig o'r cynllun teitl yn dilyn y neges hon.

Sylwch mai hwn yw'r unig gopi swyddogol a ddarparwn. Ni fyddwn yn darparu copi swyddogol papur.

Anfonwyd y copi swyddogol hwn yn electronig a phan gaiff ei argraffu ni fydd wrth raddfa. Gallwch gael copi swyddogol papur trwy archebu un o Gofrestrfa Tir EM.

Mae'r copi swyddogol hwn a gyhoeddir ar 12 Hydref 2021 yn dangos sefyllfa'r cynllun teitl hwn ar 12 Hydref 2021 am 15:52:46. Mae'n dderbyniol fel tystiolaeth i'r un graddau â'r gwreiddiol (adran 67 Deddf Cofrestru Tir 2002). Mae'r cynllun teitl hwn yn dangos safle cyffredinol, nid union linell, y terfynau. Gall fod gwyriadau yn y raddfa. Mae'n bosibl na fydd mesuriadau wedi eu graddio o'r cynllun hwn yn cyfateb â mesuriadau rhwng yr un pwyntiau ar y llawr. Gweinyddir y teitl hwn gan Gofrestrfa Tir EM Swyddfa Cymru.

© Hawlfraint y Goron. Cynhyrchwyd gan Gofrestrfa Tir EM. Gwaherddir atgynhyrchu'r cyfan neu ran heb ganiatâd ysgrifenedig blaenorol yr Arolwg Ordnans. Rhif Trwydded 100026316.

H.M. LAND REGISTRY

TITLE NUMBER

WA 862461

ORDNANCE SURVEY
PLAN REFERENCE

ST0377/0477 ST0378/0478 ST0379/0479

Scale
1/2500

ADMINISTRATIVE AREA

THE VALE OF GLAMORGAN
BRO MORGANNWG

© Crown Copyright



6933
8.603ha
21.26

0034
2.269ha
5.61

NOTE AREAS ON THIS PLAN ARE EXPRESSED
IN ACRES AND HECTARES.

0020
4.399ha
10.87

8812
2.227ha
.56

B M 96.23m

Hensol Park

0004

0600

ST0379/ST0479
ST0378/ST0478

8000
6.825ha
16.87

6900

B M 80.09m

78.0m

0098

0600

Kennel Grove

Spring

1289

1.94ha

.48

0086

8978
3.65ha
.90

0073

0867

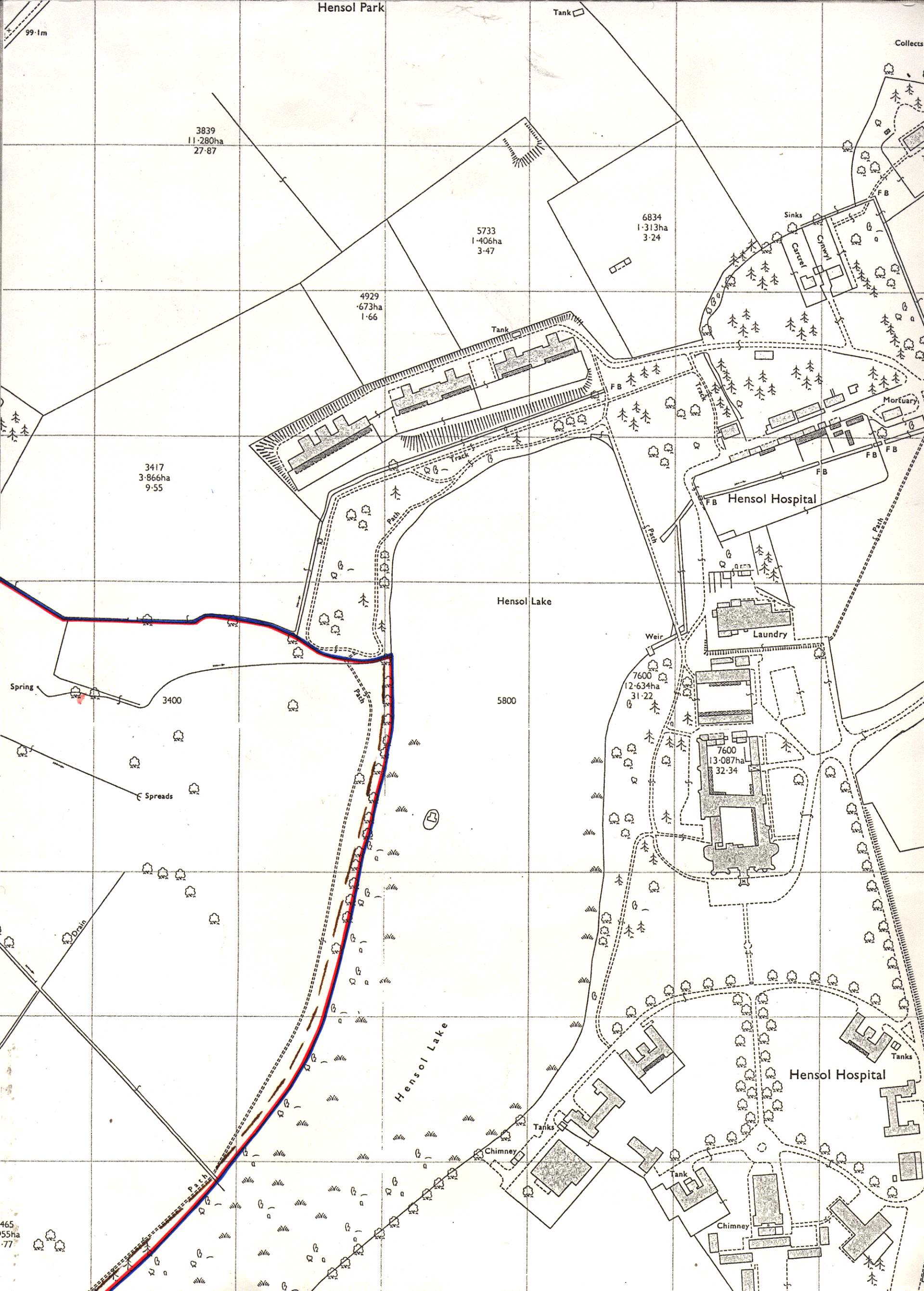
1.78ha

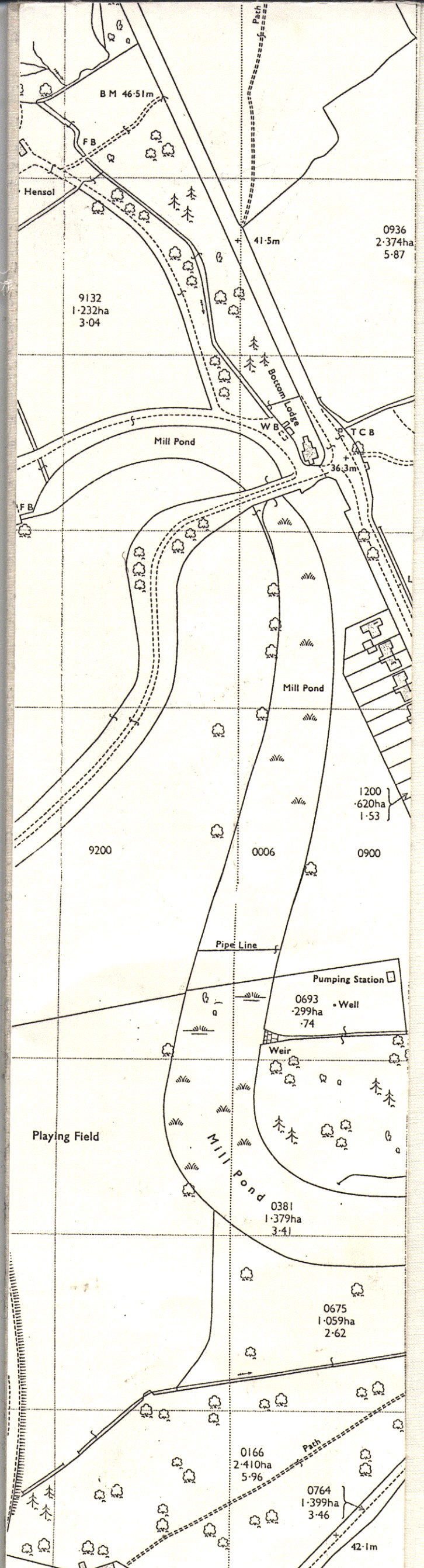
.44

0060

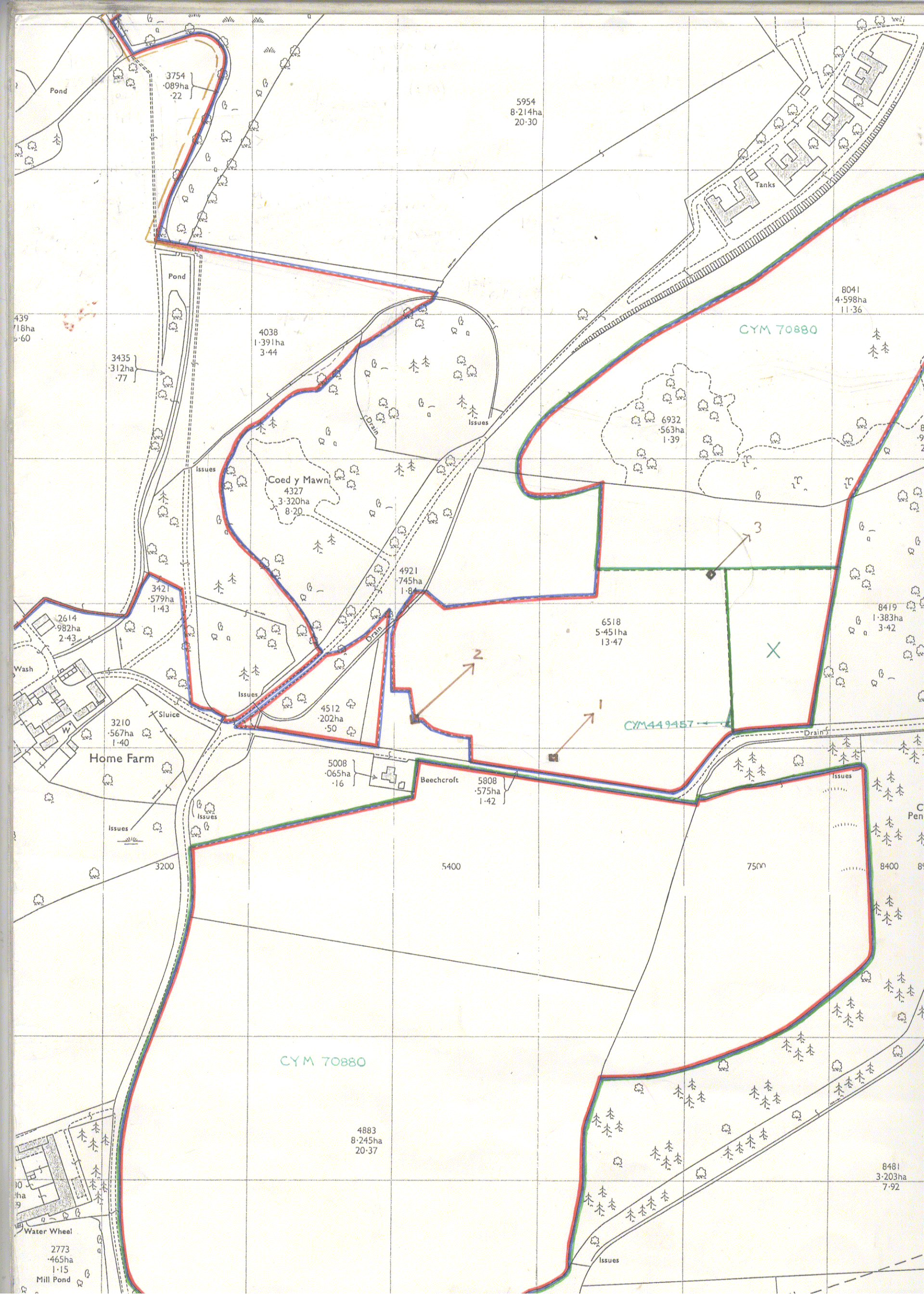
7660

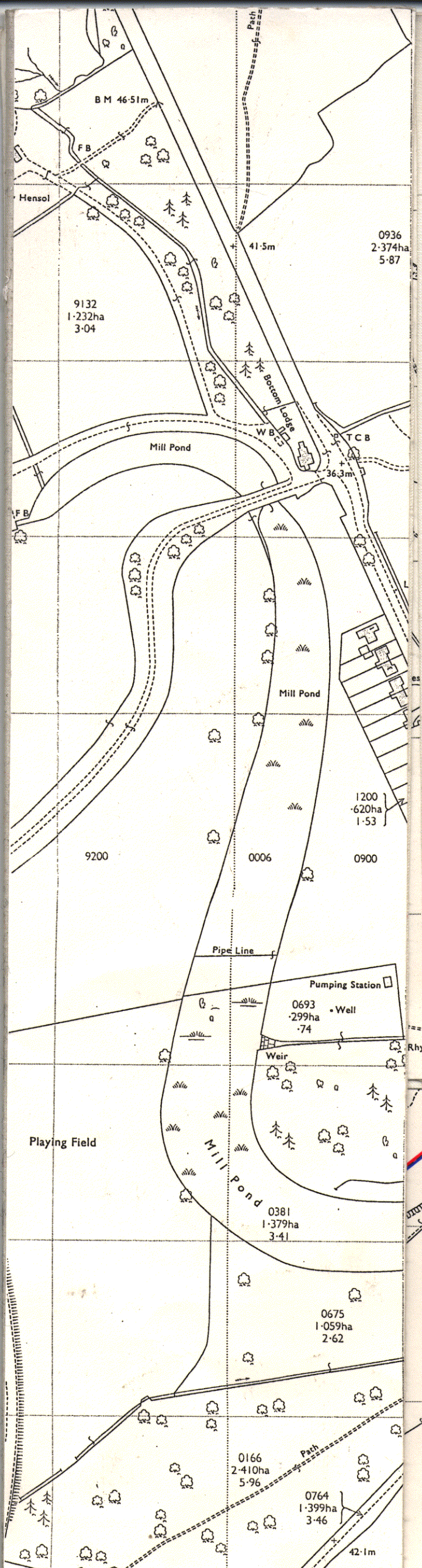
Suân Saesnes

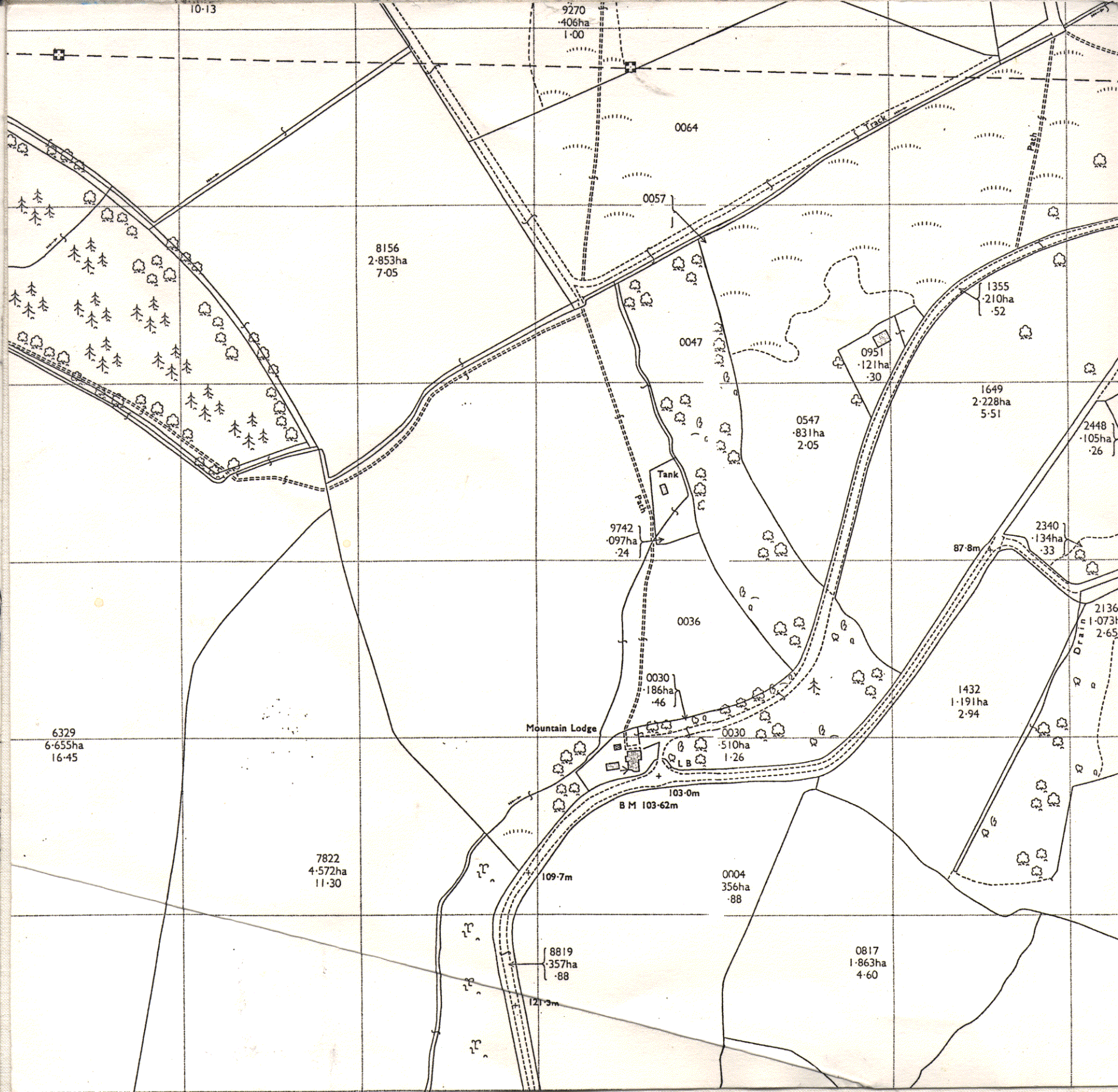




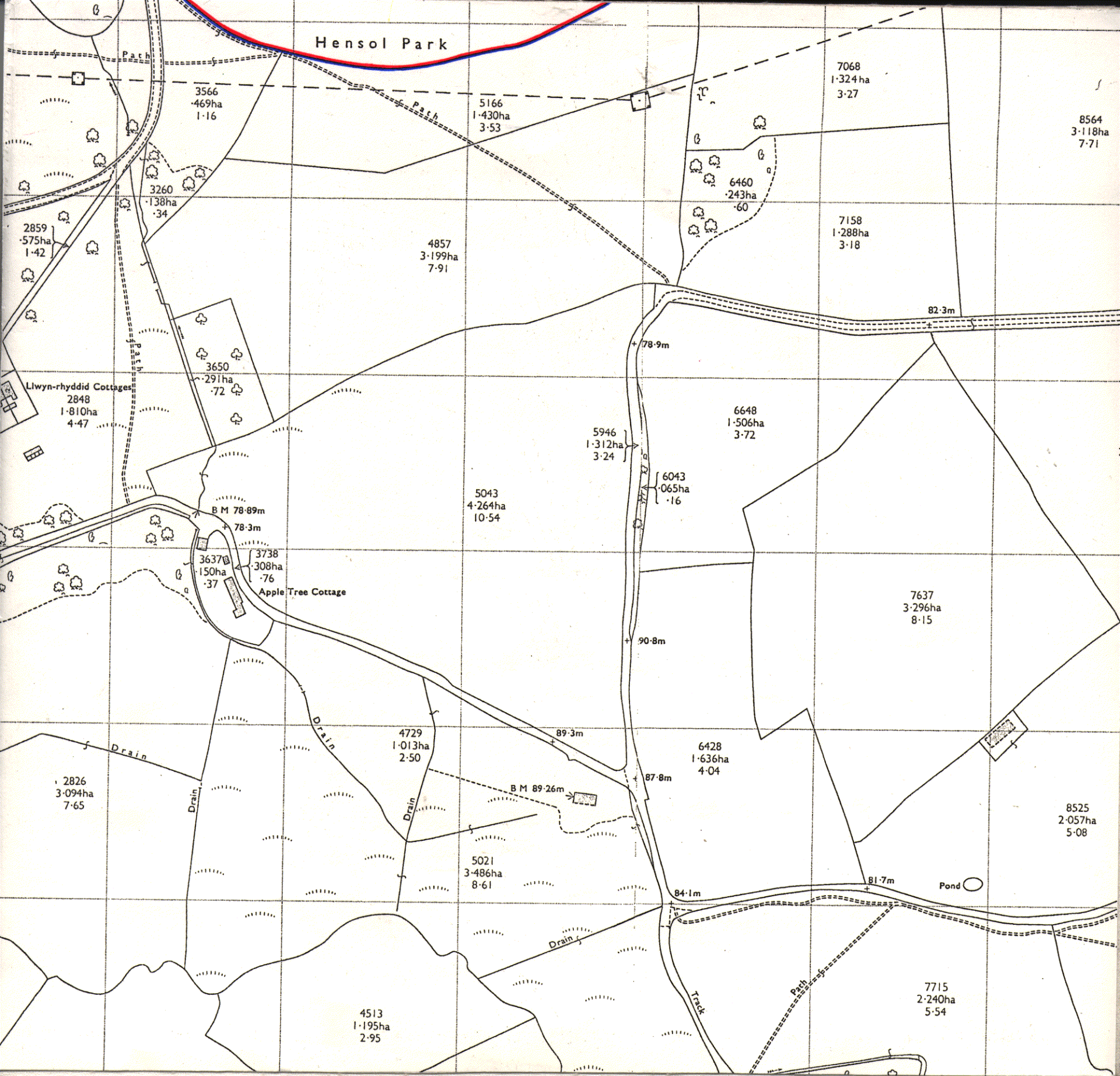


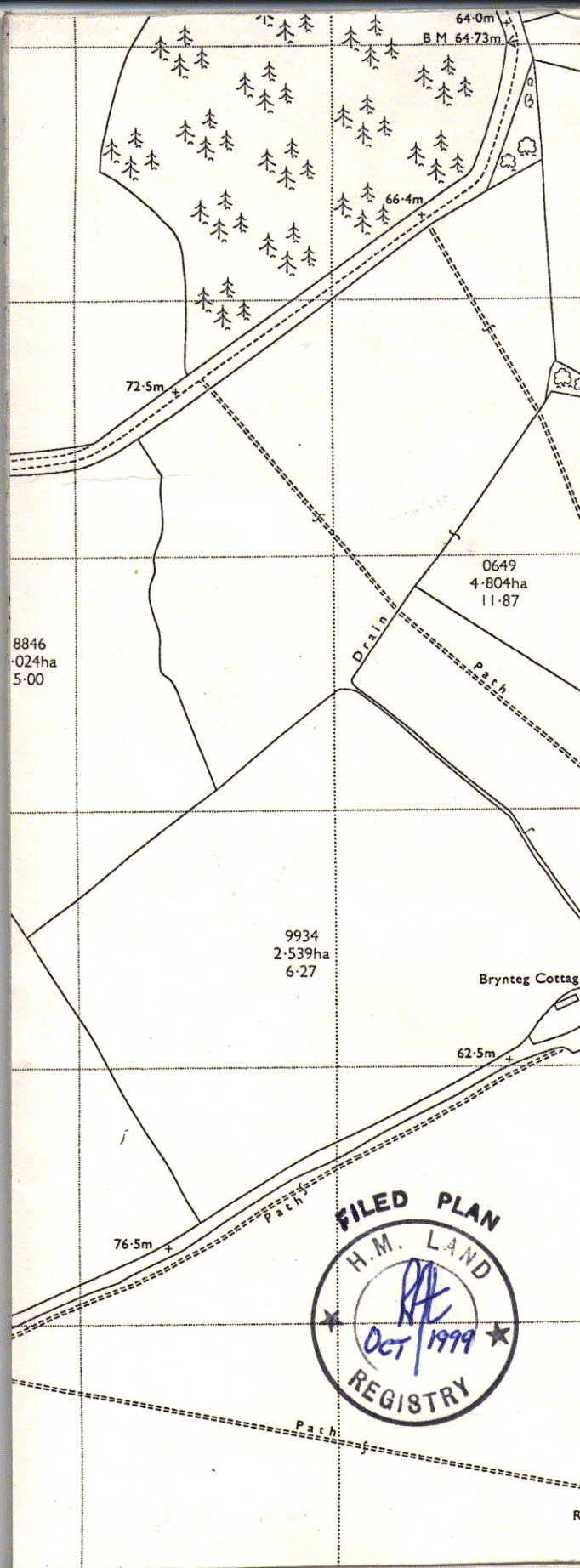






WA 862461





FILED PLAN
H.M. LAND
REGISTRY
OCT 1999