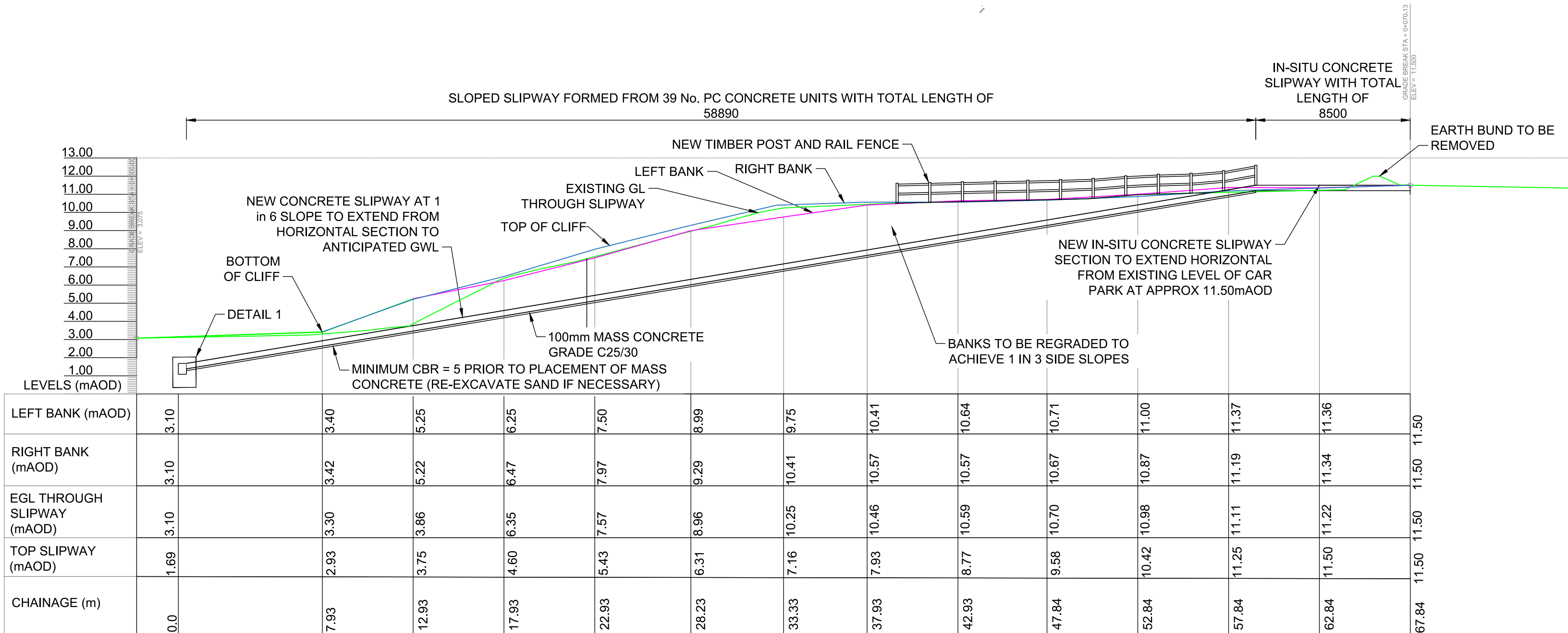
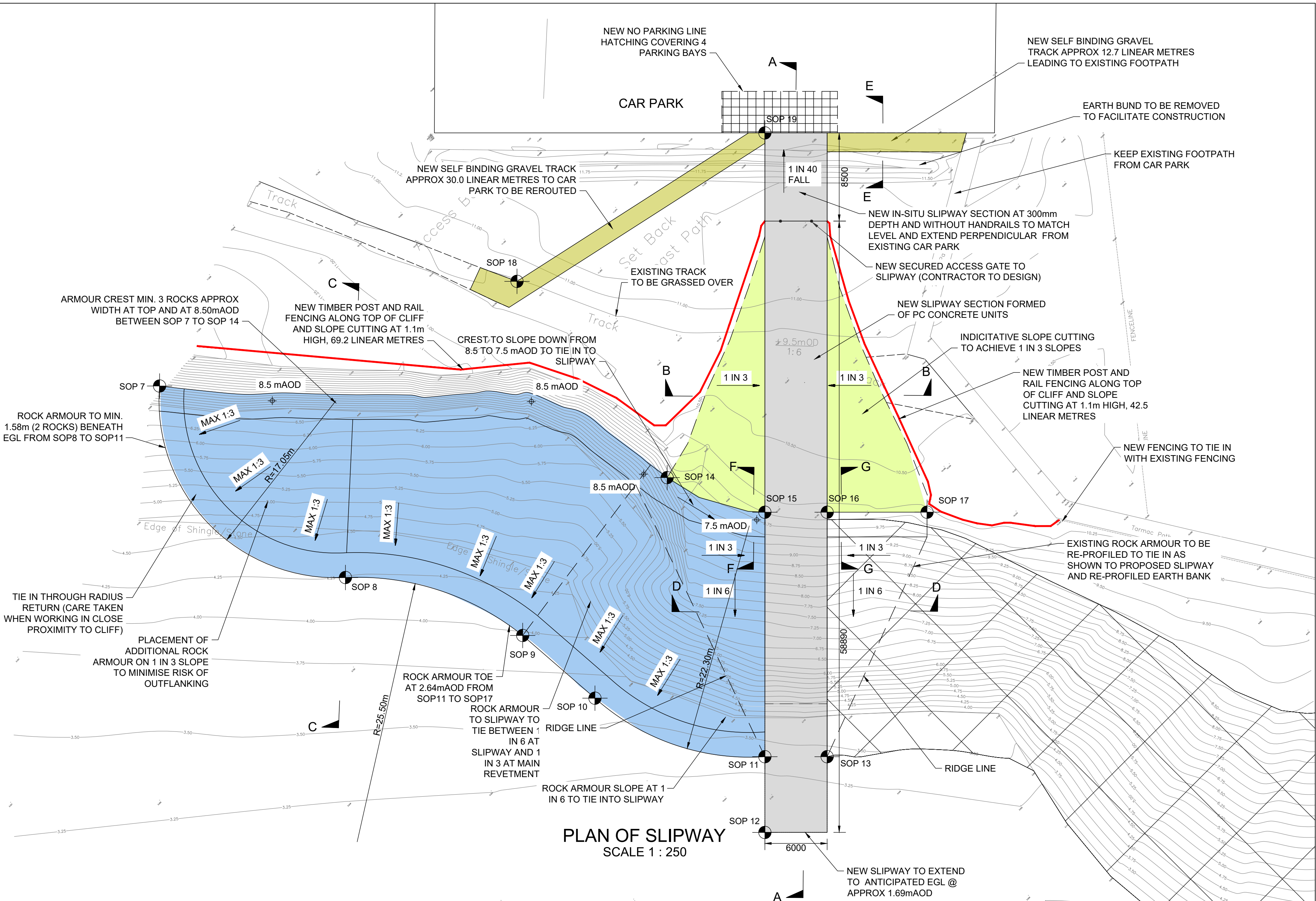
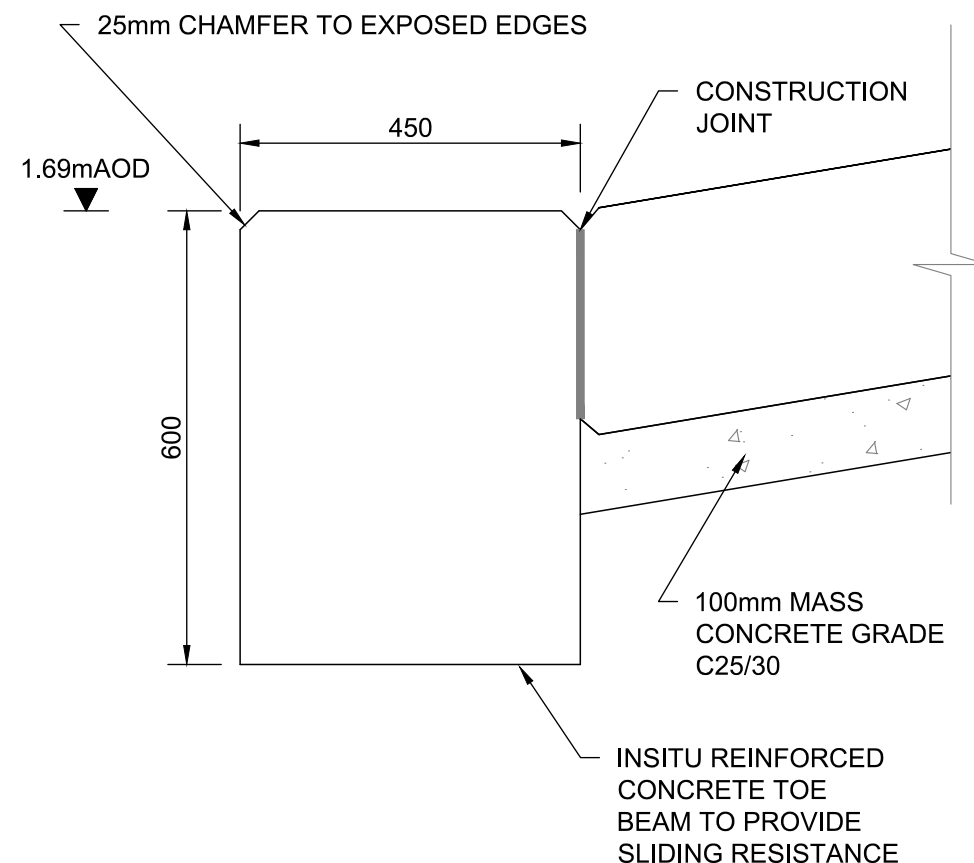


LOCATION PLAN  
NTS

Setting Out Point Table		
SOP7	273263.843	190792.606
SOP8	273263.917	190766.889
SOP9	273272.327	190751.004
SOP10	273273.144	190741.819
SOP11	273281.011	190726.386
SOP12	273276.055	190721.205
SOP13	273285.351	190722.202
SOP14	273293.022	190752.359
SOP15	273297.415	190743.46
SOP16	273301.698	190739.159
SOP17	273308.636	190732.476
SOP18	273295.698	190776.009
SOP19	273322.809	190769.703



TYPICAL SECTION A-A  
SCALE 1 : 200



DETAIL 1  
SCALE 1:10

- Excavation of existing revetment and cliff
- Working in tidal environment
- Working in an exposed coastal environment
- Movement of plant in and around the sea
- Unknown condition and structural capacity of existing revetment and access points
- Working on public amenity beach and public open space
- Working adjacent to public right of way
- Unauthorised site access
- Pollution hazards associated with working near the sea
- Risk of damage to flora and fauna

Construction Risks	Public Risks	Environmental Risks
In addition to the hazards/risks normally associated with the types of work detailed on this drawing take note of the above. It is assumed that all works detailed on this drawing will be carried out by a competent contractor working, where appropriate, to an appropriate method statement.		

SAFETY, HEALTH AND ENVIRONMENTAL INFORMATION BOX

Drawing Notes

- All dimensions shown are in millimetres unless otherwise stated and levels are in metres to Ordnance Datum.
- Do not scale from this drawing. All dimensions must be checked/verified on site.
- All works on the coast will be carried out with care to minimise the risk of pollution adhering to Pollution Prevention Guidelines.
- See AJQ-JBA-00-00-DR-C-0003 for Drawing Notes.
- All existing levels quoted on the drawings are from the time of survey. Levels and setting out should be checked by the site engineer to ensure their relevance at the time of construction.
- All materials and workmanship shall be as defined in the specification unless noted otherwise on drawings.
- All concrete shall be grade C40/50 unless noted otherwise.

Key

- Refilled earth bank
- New rock revetment
- SOP Setting out point
- Self binding gravel track
- Existing rock armour to be reprofiled
- Timber post and rail fencing

Comments						
Rev.:	Date	Drawn	Designed	Checked	Approved	
Comments						
Rev.:	Date	Drawn	Designed	Checked	Approved	
Comments						
Rev.:	Date	Drawn	Designed	Checked	Approved	
Comments						
Rev.:	Date	Drawn	Designed	Checked	Approved	
Comments						
P03	Minor adjustments					
Rev.:	Date	03/09/18	Drawn	RG	Designed	AF
				Checked	AD	Approved
						GK
Comments						
P02	Minor amendments					
Rev.:	Date	05/07/18	Drawn	NF	Designed	AF
				Checked	AD	Approved
						GK
Client Approval						
A - Approved						
B - Approved with Revisions						
C - Do Not Use						
Purpose of Issue					Status	
Information					S1	

35 Perrymount Road  
HAYWARDS HEATH  
West Sussex  
RH16 3BW  
United Kingdom

[www.jbaconsulting.com](http://www.jbaconsulting.com)  
t +44 (0)1444 473652  
f +44 (0)845 8627772  
e [info@jbaconsulting.com](mailto:info@jbaconsulting.com)

Offices at: Colchester, Doncaster, Dublin, Edinburgh, Exeter, Haywards Heath, Limerick, Newcastle upon Tyne, Newport, Salford, Skipton, Tadcaster, Thirsk, Wallingford and Warrington

ABERAVON PROMENADE  
DETAILED DESIGN AND BUSINESS CASE

SLIPWAY PLAN AND SECTIONS

for



This document is the property of Jeremy Benn Associates Ltd. It shall not be reproduced in whole or in part, nor disclosed to a third party, without the permission of Jeremy Benn Associates Ltd.		
Scale:	Drawn: R. Groves	28/06/18
	Designed: A. Fyffe	28/06/18
	Checked: A. Dane	28/06/18
	Approved: G. Kenn	28/06/18
As Shown @ A1		
Digital File Name:	AJQ-JBA-00-00-DR-C-5001-slipway and sections	
Drawing Number:	AJQ-JBA-00-00-DR-C-5001	
	Revision	P03