

CSL19053 – Filter papers ex Aberthaw

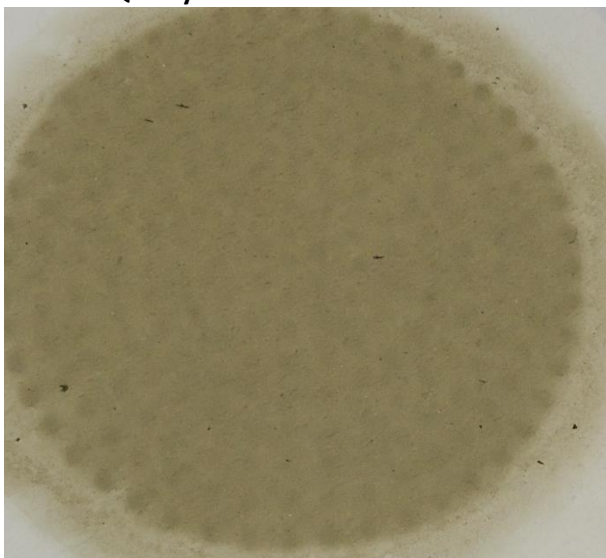
CSL ID	Sample Description	Date sampled	Date received
19-1873	Rail Loop filter	Aug-19	05/11/2019
19-1874	Quarry North filter #1	Sept-19	05/11/2019
19-1875	Quarry North filter #2	Sept-19	05/11/2019

Filter papers as received

19-1873 Rail Loop 08-19



19-1874 Quarry North 09-19 #1



19-1875 Quarry North 09-19 #2

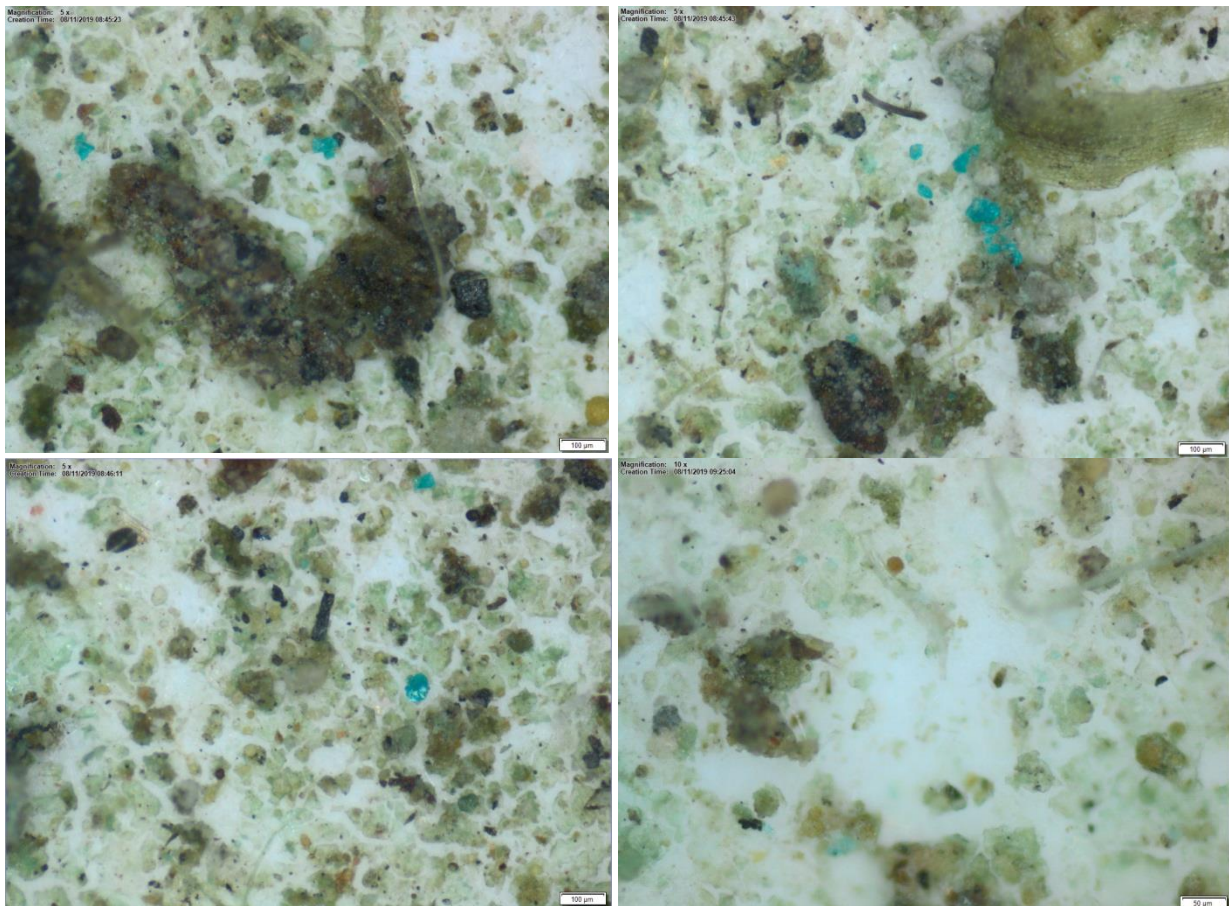


Inspection using light microscope

The filter papers were inspected using a light microscope at different levels of magnification.

19-1873 Rail Loop 08-19

A small amount of blue crystalline material along with a number of dark brown/green coloured plaques could be seen on the filter paper. Very few cenospheres were observed on the filter paper when inspected with the light microscope.



19-1874 & 19-1875 Quarry North 09-19 #1 & #2

The majority of deposition appeared to be grainy sand coloured material, with some fibres and green plant like material present. Very few cenospheres were observed on the filter papers when inspected with the light microscope.

19-1874 Quarry North 09-19 #1



19-1875 Quarry North 09-19 #2



Conclusions

19-1873 Rail Loop 08-19

Microscopic examination of this filter suggests the deposition is blue copper sulphate (likely from environmental solutions) and plant matter. Very few cenospheres were observed. The appearance of this filter is consistent with those seen previously from this sample point, with the same findings eg 18-579 Rail Loop ex Feb 2018.

19-1874 & 19-1875 Quarry North 09-19 #1 & #2

Microscopic examination of the filters ex Quarry North suggests that the deposition is predominantly dirt/dust and plant matter. Very few cenospheres were observed on the filter paper. Appearance of the filter is consistent with sample 19-001 ex Quarry North November 2018 and indicates the majority of residual material is possibly sand/dust.