



Unit 7-8 Hawarden Business Park
Manor Road (off Manor Lane)
Hawarden
Deeside
CH5 3US

Tel: (01244) 528700

Fax: (01244) 528701

email: hawardencustomerservices@alsglobal.com

Website: www.alsenvironmental.co.uk

Newport City Council
Civic Centre
Newport
NP20 4UR

Attention: Robert Hester

CERTIFICATE OF ANALYSIS

Date of report Generation: 30 October 2019
Customer: Newport City Council
Sample Delivery Group (SDG): 190924-43
Your Reference: Ph2 Leachate Sept Part 1
Location: Docks Way
Report No: 527548

This report has been revised and directly supersedes 527304 in its entirety.

We received 2 samples on Tuesday September 24, 2019 and 2 of these samples were scheduled for analysis which was completed on Monday October 28, 2019. Accredited laboratory tests are defined within the report, but opinions, interpretations and on-site data expressed herein are outside the scope of ISO 17025 accreditation.

Should this report require incorporation into client reports, it must be used in its entirety and not simply with the data sections alone.

Chemical testing (unless subcontracted) performed at ALS Environmental Hawarden (Method codes TM) or ALS Environmental Aberdeen (Method codes S).

All sample data is provided by the customer. The reported results relate to the sample supplied, and on the basis that this data is correct.

Incorrect sampling dates and/or sample information will affect the validity of results.

The customer is not permitted to reproduce this report except in full without the approval of the laboratory.

Approved By:

Sonia McWhan

Operations Manager





CERTIFICATE OF ANALYSIS

Validated

SDG:	190924-43	Client Reference:	Ph2 Leachate Sept Part 1	Report Number:	527548
Location:	Docks Way	Order Number:	700145539	Superseded Report:	527304

Received Sample Overview

Lab Sample No(s)	Customer Sample Ref.	AGS Ref.	Depth (m)	Sampled Date
20788079	C3		0.00 - 0.00	24/09/2019
20788089	C2B		0.00 - 0.00	24/09/2019

Maximum Sample/Coolbox Temperature (°C) : 15.2

ISO5667-3 Water quality - Sampling - Part3 -

During Transportation samples shall be stored in a cooling device capable of maintaining a temperature of (5±3)°C.

ALS have data which show that a cool box with 4 frozen icepacks is capable of maintaining pre-chilled samples at a temperature of (5±3)°C for a period of up to 24hrs.

Only received samples which have had analysis scheduled will be shown on the following pages.



CERTIFICATE OF ANALYSIS

Validated

SDG:	190924-43	Client Reference:	Ph2 Leachate Sept Part 1	Report Number:	527548
Location:	Docks Way	Order Number:	700145539	Superseded Report:	527304

Results Legend

- X Test
- N No Determination Possible

Sample Types -

- S - Soil/Solid
- UNS - Unspecified Solid
- GW - Ground Water
- SW - Surface Water
- LE - Land Leachate
- PL - Prepared Leachate
- PR - Process Water
- SA - Saline Water
- TE - Trade Effluent
- TS - Treated Sewage
- US - Untreated Sewage
- RE - Recreational Water
- DW - Drinking Water Non-regulatory
- UNL - Unspecified Liquid
- SL - Sludge
- G - Gas
- OTH - Other

Lab Sample No(s)	Customer Sample Reference	AGS Reference	Depth (m)	Container								Sample Type
				0.5l glass bottle (ALE227)	500ml Plastic (ALE208)	H2SO4 (ALE244)	NaOH (ALE245)	ZnAc (ALE246)	0.5l glass bottle (ALE227)	500ml Plastic (ALE208)	H2SO4 (ALE244)	
20788079	C3		0.00 - 0.00									LE
20788089	C2B		0.00 - 0.00									LE
Alkalinity as CaCO3	All	NDPs: 0 Tests: 2		X						X		
Alkalinity Filtered as CaCO3	All	NDPs: 0 Tests: 2		X						X		
Ammoniacal Nitrogen	All	NDPs: 0 Tests: 2			X					X		
Anions by ion Chromatography	All	NDPs: 0 Tests: 1		X								
Anions by Kone (w)	All	NDPs: 0 Tests: 1								X		
BOD True Total	All	NDPs: 0 Tests: 2		X						X		
COD Unfiltered	All	NDPs: 0 Tests: 2		X						X		
Conductivity (at 20 deg.C)	All	NDPs: 0 Tests: 2		X						X		
Cyanide Comp/Free/Total/Thiocyanate	All	NDPs: 0 Tests: 2					X				X	
Dissolved Metals by ICP-MS	All	NDPs: 0 Tests: 3		X	X					X		
EPH (DRO) (C10-C40) Aqueous (W)	All	NDPs: 0 Tests: 2		X						X		
Ionic Balance	All	NDPs: 0 Tests: 2			X					X		
Mercury Dissolved	All	NDPs: 0 Tests: 2			X					X		
Nitrite by Kone (w)	All	NDPs: 0 Tests: 2					X				X	
Organotins in Aqueous Samples	All	NDPs: 0 Tests: 2		X						X		



CERTIFICATE OF ANALYSIS

Validated

SDG:	190924-43	Client Reference:	Ph2 Leachate Sept Part 1	Report Number:	527548
Location:	Docks Way	Order Number:	700145539	Superseded Report:	527304

Results Legend <div style="display: flex; gap: 5px;"> <div style="border: 1px solid black; background-color: yellow; width: 15px; height: 15px; display: flex; align-items: center; justify-content: center; margin-right: 5px;">X</div> Test <div style="border: 1px solid black; background-color: red; width: 15px; height: 15px; display: flex; align-items: center; justify-content: center; margin-right: 5px; color: white;">N</div> No Determination Possible </div> Sample Types - S - Soil/Solid UNS - Unspecified Solid GW - Ground Water SW - Surface Water LE - Land Leachate PL - Prepared Leachate PR - Process Water SA - Saline Water TE - Trade Effluent TS - Treated Sewage US - Untreated Sewage RE - Recreational Water DW - Drinking Water Non-regulatory UNL - Unspecified Liquid SL - Sludge G - Gas OTH - Other	Lab Sample No(s)	Customer Sample Reference	AGS Reference	Depth (m)	Container	Sample Type	
		20789079	C3		0.00 - 0.00	ZnAc (ALE246)	LE
			C2B		0.00 - 0.00	ZnAc (ALE246)	LE
					0.00 - 0.00	NaOH (ALE245)	LE
					0.00 - 0.00	H2SO4 (ALE244)	LE
					0.00 - 0.00	500ml Plastic (ALE208)	LE
					0.00 - 0.00	0.5l glass bottle (ALE227)	LE
				0.00 - 0.00	ZnAc (ALE246)	LE	
				0.00 - 0.00	NaOH (ALE245)	LE	
				0.00 - 0.00	H2SO4 (ALE244)	LE	
				0.00 - 0.00	500ml Plastic (ALE208)	LE	
				0.00 - 0.00	0.5l glass bottle (ALE227)	LE	
				0.00 - 0.00	ZnAc (ALE246)	LE	
				0.00 - 0.00	NaOH (ALE245)	LE	
				0.00 - 0.00	H2SO4 (ALE244)	LE	
				0.00 - 0.00	500ml Plastic (ALE208)	LE	
				0.00 - 0.00	0.5l glass bottle (ALE227)	LE	
				0.00 - 0.00	ZnAc (ALE246)	LE	
				0.00 - 0.00	NaOH (ALE245)	LE	
				0.00 - 0.00	H2SO4 (ALE244)	LE	
				0.00 - 0.00	500ml Plastic (ALE208)	LE	
				0.00 - 0.00	0.5l glass bottle (ALE227)	LE	
				0.00 - 0.00	ZnAc (ALE246)	LE	
				0.00 - 0.00	NaOH (ALE245)	LE	
				0.00 - 0.00	H2SO4 (ALE244)	LE	
				0.00 - 0.00	500ml Plastic (ALE208)	LE	
				0.00 - 0.00	0.5l glass bottle (ALE227)	LE	
				0.00 - 0.00	ZnAc (ALE246)	LE	
				0.00 - 0.00	NaOH (ALE245)	LE	
				0.00 - 0.00	H2SO4 (ALE244)	LE	
				0.00 - 0.00	500ml Plastic (ALE208)	LE	
				0.00 - 0.00	0.5l glass bottle (ALE227)	LE	
				0.00 - 0.00	ZnAc (ALE246)	LE	
				0.00 - 0.00	NaOH (ALE245)	LE	
				0.00 - 0.00	H2SO4 (ALE244)	LE	
				0.00 - 0.00	500ml Plastic (ALE208)	LE	
				0.00 - 0.00	0.5l glass bottle (ALE227)	LE	
				0.00 - 0.00	ZnAc (ALE246)	LE	
				0.00 - 0.00	NaOH (ALE245)	LE	
				0.00 - 0.00	H2SO4 (ALE244)	LE	
				0.00 - 0.00	500ml Plastic (ALE208)	LE	
				0.00 - 0.00	0.5l glass bottle (ALE227)	LE	
				0.00 - 0.00	ZnAc (ALE246)	LE	
				0.00 - 0.00	NaOH (ALE245)	LE	
				0.00 - 0.00	H2SO4 (ALE244)	LE	
				0.00 - 0.00	500ml Plastic (ALE208)	LE	
				0.00 - 0.00	0.5l glass bottle (ALE227)	LE	
				0.00 - 0.00	ZnAc (ALE246)	LE	
				0.00 - 0.00	NaOH (ALE245)	LE	
				0.00 - 0.00	H2SO4 (ALE244)	LE	
				0.00 - 0.00	500ml Plastic (ALE208)	LE	
				0.00 - 0.00	0.5l glass bottle (ALE227)	LE	
				0.00 - 0.00	ZnAc (ALE246)	LE	
				0.00 - 0.00	NaOH (ALE245)	LE	
				0.00 - 0.00	H2SO4 (ALE244)	LE	
				0.00 - 0.00	500ml Plastic (ALE208)	LE	
				0.00 - 0.00	0.5l glass bottle (ALE227)	LE	
				0.00 - 0.00	ZnAc (ALE246)	LE	
				0.00 - 0.00	NaOH (ALE245)	LE	
				0.00 - 0.00	H2SO4 (ALE244)	LE	
				0.00 - 0.00	500ml Plastic (ALE208)	LE	
				0.00 - 0.00	0.5l glass bottle (ALE227)	LE	
				0.00 - 0.00	ZnAc (ALE246)	LE	
				0.00 - 0.00	NaOH (ALE245)	LE	
				0.00 - 0.00	H2SO4 (ALE244)	LE	
				0.00 - 0.00	500ml Plastic (ALE208)	LE	
				0.00 - 0.00	0.5l glass bottle (ALE227)	LE	
				0.00 - 0.00	ZnAc (ALE246)	LE	
				0.00 - 0.00	NaOH (ALE245)	LE	
				0.00 - 0.00	H2SO4 (ALE244)	LE	
				0.00 - 0.00	500ml Plastic (ALE208)	LE	
				0.00 - 0.00	0.5l glass bottle (ALE227)	LE	
				0.00 - 0.00	ZnAc (ALE246)	LE	
				0.00 - 0.00	NaOH (ALE245)	LE	
				0.00 - 0.00	H2SO4 (ALE244)	LE	
				0.00 - 0.00	500ml Plastic (ALE208)	LE	
				0.00 - 0.00	0.5l glass bottle (ALE227)	LE	
				0.00 - 0.00	ZnAc (ALE246)	LE	
				0.00 - 0.00	NaOH (ALE245)	LE	
				0.00 - 0.00	H2SO4 (ALE244)	LE	
				0.00 - 0.00	500ml Plastic (ALE208)	LE	
				0.00 - 0.00	0.5l glass bottle (ALE227)	LE	
				0.00 - 0.00	ZnAc (ALE246)	LE	
				0.00 - 0.00	NaOH (ALE245)	LE	
				0.00 - 0.00	H2SO4 (ALE244)	LE	
				0.00 - 0.00	500ml Plastic (ALE208)	LE	
				0.00 - 0.00	0.5l glass bottle (ALE227)	LE	
				0.00 - 0.00	ZnAc (ALE246)	LE	
				0.00 - 0.00	NaOH (ALE245)	LE	
				0.00 - 0.00	H2SO4 (ALE244)	LE	
				0.00 - 0.00	500ml Plastic (ALE208)	LE	
				0.00 - 0.00	0.5l glass bottle (ALE227)	LE	
				0.00 - 0.00	ZnAc (ALE246)	LE	
				0.00 - 0.00	NaOH (ALE245)	LE	
				0.00 - 0.00	H2SO4 (ALE244)	LE	
				0.00 - 0.00	500ml Plastic (ALE208)	LE	
				0.00 - 0.00	0.5l glass bottle (ALE227)	LE	
				0.00 - 0.00	ZnAc (ALE246)	LE	
				0.00 - 0.00	NaOH (ALE245)	LE	
				0.00 - 0.00	H2SO4 (ALE244)	LE	
				0.00 - 0.00	500ml Plastic (ALE208)	LE	
				0.00 - 0.00	0.5l glass bottle (ALE227)	LE	
				0.00 - 0.00	ZnAc (ALE246)	LE	
				0.00 - 0.00	NaOH (ALE245)	LE	
				0.00 - 0.00	H2SO4 (ALE244)	LE	
				0.00 - 0.00	500ml Plastic (ALE208)	LE	
				0.00 - 0.00	0.5l glass bottle (ALE227)	LE	
				0.00 - 0.00	ZnAc (ALE246)	LE	
				0.00 - 0.00	NaOH (ALE245)	LE	
				0.00 - 0.00	H2SO4 (ALE244)	LE	
				0.00 - 0.00	500ml Plastic (ALE208)	LE	
				0.00 - 0.00	0.5l glass bottle (ALE227)	LE	
				0.00 - 0.00	ZnAc (ALE246)	LE	
				0.00 - 0.00	NaOH (ALE245)	LE	
				0.00 - 0.00	H2SO4 (ALE244)	LE	
				0.00 - 0.00	500ml Plastic (ALE208)	LE	
				0.00 - 0.00	0.5l glass bottle (ALE227)	LE	
				0.00 - 0.00	ZnAc (ALE246)	LE	
				0.00 - 0.00	NaOH (ALE245)	LE	
				0.00 - 0.00	H2SO4 (ALE244)	LE	
				0.00 - 0.00	500ml Plastic (ALE208)	LE	
				0.00 - 0.00	0.5l glass bottle (ALE227)	LE	
				0.00 - 0.00	ZnAc (ALE246)	LE	
				0.00 - 0.00	NaOH (ALE245)	LE	
				0.00 - 0.00	H2SO4 (ALE244)	LE	
				0.00 - 0.00	500ml Plastic (ALE208)	LE	
				0.00 - 0.00	0.5l glass bottle (ALE227)	LE	
				0.00 - 0.00	ZnAc (ALE246)	LE	
				0.00 - 0.00	NaOH (ALE245)	LE	
				0.00 - 0.00	H2SO4 (ALE244)	LE	
				0.00 - 0.00	500ml Plastic (ALE208)	LE	
				0.00 - 0.00	0.5l glass bottle (ALE227)	LE	
				0.00 - 0.00	ZnAc (ALE246)	LE	
				0.00 - 0.00	NaOH (ALE245)	LE	
				0.00 - 0.00	H2SO4 (ALE244)	LE	
				0.00 - 0.00	500ml Plastic (ALE208)	LE	
				0.00 - 0.00	0.5l glass bottle (ALE227)	LE	
				0.00 - 0.00	ZnAc (ALE246)	LE	
				0.00 - 0.00	NaOH (ALE245)		



CERTIFICATE OF ANALYSIS

Validated

SDG:	190924-43	Client Reference:	Ph2 Leachate Sept Part 1	Report Number:	527548
Location:	Docks Way	Order Number:	700145539	Superseded Report:	527304

Results Legend		Customer Sample Ref.	C3	C2B			
# ISO17025 accredited. M mCERTS accredited. aq Aqueous / settled sample. diss.filt Dissolved / filtered sample. tot.unfilt Total / unfiltered sample. * Subcontracted - refer to subcontractor report for accreditation status. ** % recovery of the surrogate standard to check the efficiency of the method. The results of individual compounds within samples aren't corrected for the recovery (F) Trigger breach confirmed 1.3x5@ Sample deviation (see appendix)	Depth (m) Sample Type Date Sampled Sampled Time Date Received SDG Ref Lab Sample No.(s) AGS Reference	C3 0.00 - 0.00 Land Leachate (LE) 24/09/2019 24/09/2019 190924-43 20788079	C2B 0.00 - 0.00 Land Leachate (LE) 24/09/2019 24/09/2019 190924-43 20788089				
Component	LOD/Units	Method					
Ionic balance	% Diff	Calulation	0.366	-0.66			
Alkalinity, Total as CaCO3	<2 mg/l	TM043	6360 #	6920 #			
Alkalinity, Total as CaCO3 (diss.filt)	<2 mg/l	TM043	6280	6840			
Alkalinity, Bicarbonate as CaCO3 (diss.filt)	<2 mg/l	TM043	6280	6840			
BOD, unfiltered	<1 mg/l	TM045	230 #	95.8 #			
Organic Carbon, Total	<3 mg/l	TM090	1090 2	442			
Ammoniacal Nitrogen as N	<0.2 mg/l	TM099	1170	1210			
Sulphide	<0.01 mg/l	TM101	0.651	0.0681			
COD, unfiltered	<7 mg/l	TM107	3600 #	1400 #			
Conductivity @ 20 deg.C	<0.005 mS/cm	TM120	14.1 #	15.3 #			
Arsenic (diss.filt)	<0.5 µg/l	TM152	35.2 2 #	47.4 2 #			
Boron (diss.filt)	<10 µg/l	TM152	>5200 2 #	10500 2 #			
Cadmium (diss.filt)	<0.08 µg/l	TM152	0.0898 2 #	0.104 2 #			
Chromium (diss.filt)	<1 µg/l	TM152	529 2 #	151 2 #			
Copper (diss.filt)	<0.3 µg/l	TM152	44.3 2 #	3.44 2 #			
Lead (diss.filt)	<0.2 µg/l	TM152	15.3 2 #	<2 2 #			
Manganese (diss.filt)	<3 µg/l	TM152	389 2 #	712 2 #			
Nickel (diss.filt)	<0.4 µg/l	TM152	139 2 #	179 2 #			
Selenium (diss.filt)	<1 µg/l	TM152	2.15 2 #	1.61 2 #			
Zinc (diss.filt)	<1 µg/l	TM152	334 2 #	438 2 #			
Sodium (Dis.Filt)	<0.076 mg/l	TM152	1720 2 #	1670 2 #			
Magnesium (Dis.Filt)	<0.036 mg/l	TM152	186 2 #	216 2 #			
Potassium (Dis.Filt)	<0.2 mg/l	TM152	164 2 #	629 2 #			
Calcium (Dis.Filt)	<0.2 mg/l	TM152	48.4 2 #	102 2 #			
Iron (Dis.Filt)	<0.019 mg/l	TM152	8.24 2 #	2.57 2 #			
Hardness, Total as CaCO3	<0.65 mg/l	TM152	1030 2	1220 2			
EPH Range >C10 - C40 (aq)	<100 µg/l	TM172	1850	1390			
Mercury (diss.filt)	<0.01 µg/l	TM183	<0.1 2 #	<0.1 2 #			
Nitrite as NO2	<0.05 mg/l	TM184	<0.05	<0.05			
Phosphate (Ortho as PO4)	<0.05 mg/l	TM184	23.7	7.45			
Sulphate	<2 mg/l	TM184		<10			
Chloride	<2 mg/l	TM184		2260			



CERTIFICATE OF ANALYSIS

Validated

SDG: 190924-43 Client Reference: Ph2 Leachate Sept Part 1 Report Number: 527548
 Location: Docks Way Order Number: 700145539 Superseded Report: 527304

Results Legend		Customer Sample Ref.	C3	C2B			
#	ISO17025 accredited.	Depth (m) Sample Type Date Sampled Sampled Time Date Received SDG Ref Lab Sample No.(s) AGS Reference	0.00 - 0.00	0.00 - 0.00			
M	mCERTS accredited.		Land Leachate (LE)	Land Leachate (LE)			
aq	Aqueous / settled sample.		24/09/2019	24/09/2019			
diss.filt	Dissolved / filtered sample.						
tot.unfilt	Total / unfiltered sample.						
*	Subcontracted - refer to subcontractor report for accreditation status.						
**	% recovery of the surrogate standard to check the efficiency of the method. The results of individual compounds within samples aren't corrected for the recovery		24/09/2019	24/09/2019			
(F)	Trigger breach confirmed		190924-43	190924-43			
1-3&@	Sample deviation (see appendix)		20788079	20788089			
Component	LOD/Units	Method					
Nitrate as NO3	<0.3 mg/l	TM184		<1.5			
Total Oxidised Nitrogen as N	<0.1 mg/l	TM184		<0.5			
Total Oxidised Nitrogen as N	<0.02 mg/l	TM226	<0.02				
Cyanide, Total	<0.05 mg/l	TM227	0.08 #	<0.05 #			
pH	<1 pH Units	TM256	8.05 #	8.09 #			
Phenol	<0.002 mg/l	TM259	0.16 2 #	<0.01 #			
Cresols	<0.006 mg/l	TM259	0.16 2 #	0.05 #			
Xylenols	<0.008 mg/l	TM259	0.3 2 #	<0.04 #			
Phenols, Total Detected monohydric	<0.016 mg/l	TM259	0.62 2 #	0.05 #			
Dibutyl tin	<5 ng/l	TM328	<150	<150			
Tributyl tin	<1 ng/l	TM328	<30	<30			
Tetrabutyl tin	<2 ng/l	TM328	<60	<60			
Triphenyl tin	<1 ng/l	TM328	<30	<30			
Surrogate	%	TM328	91.4	92.3			
Trifluralin	<0.01 µg/l	TM343	<0.01	<0.01			
alpha-HCH	<0.01 µg/l	TM343	<0.01	<0.01			
gamma-HCH (Lindane)	<0.01 µg/l	TM343	<0.01	<0.01			
Heptachlor	<0.01 µg/l	TM343	<0.01	<0.01			
Aldrin	<0.01 µg/l	TM343	<0.01	<0.01			
beta-HCH	<0.01 µg/l	TM343	<0.01	<0.01			
Isodrin	<0.01 µg/l	TM343	<0.01	<0.01			
delta-HCH	<0.01 µg/l	TM343	<0.01	<0.01			
Heptachlor epoxide	<0.01 µg/l	TM343	<0.01	<0.01			
o,p'-DDE	<0.01 µg/l	TM343	<0.01	<0.01			
Endosulphan I	<0.01 µg/l	TM343	<0.01	<0.01			
trans-Chlordane	<0.01 µg/l	TM343	<0.01	<0.01			
cis-Chlordane	<0.01 µg/l	TM343	<0.01	<0.01			
p,p'-DDE	<0.01 µg/l	TM343	<0.01	<0.01			
Dieldrin	<0.01 µg/l	TM343	<0.01	<0.01			
o,p'-DDD (TDE)	<0.01 µg/l	TM343	<0.01	<0.01			
Endrin	<0.01 µg/l	TM343	<0.01	<0.01			
o,p'-DDT	<0.01 µg/l	TM343	<0.01	<0.01			



CERTIFICATE OF ANALYSIS

Validated

SDG: 190924-43 **Client Reference:** Ph2 Leachate Sept Part 1 **Report Number:** 527548
Location: Docks Way **Order Number:** 700145539 **Superseded Report:** 527304

Results Legend		Customer Sample Ref.	C3	C2B			
#	ISO17025 accredited.	Depth (m) Sample Type Date Sampled Sampled Time Date Received SDG Ref Lab Sample No.(s) AGS Reference	0.00 - 0.00	0.00 - 0.00			
M	mCERTS accredited.		Land Leachate (LE)	Land Leachate (LE)			
aq	Aqueous / settled sample.		24/09/2019	24/09/2019			
diss.filt	Dissolved / filtered sample.						
tot.unfilt	Total / unfiltered sample.						
*	Subcontracted - refer to subcontractor report for accreditation status.						
**	% recovery of the surrogate standard to check the efficiency of the method. The results of individual compounds within samples aren't corrected for the recovery		24/09/2019	24/09/2019			
(F)	Trigger breach confirmed		190924-43	190924-43			
1-3*5@	Sample deviation (see appendix)		20788079	20788089			
Component	LOD/Units	Method					
p,p'-DDD (TDE)	<0.01 µg/l	TM343	<0.01	<0.01			
Endosulphan II	<0.02 µg/l	TM343	<0.02	<0.02			
p,p'-DDT	<0.01 µg/l	TM343	<0.01	<0.01			
o,p'-Methoxychlor	<0.01 µg/l	TM343	<0.01	<0.01			
p,p'-Methoxychlor	<0.01 µg/l	TM343	<0.01	<0.01			
Endosulphan Sulphate	<0.02 µg/l	TM343	<0.02	<0.02			
Permethrin I	<0.01 µg/l	TM343	<0.01	<0.01			
Permethrin II	<0.01 µg/l	TM343	<0.01	<0.01			
1,3,5-Trichlorobenzene	<0.01 µg/l	TM344	<0.1	<0.02			
Hexachlorobutadiene	<0.01 µg/l	TM344	<0.1	<0.02			
1,2,4-Trichlorobenzene	<0.01 µg/l	TM344	<0.1	<0.02			
1,2,3-Trichlorobenzene	<0.01 µg/l	TM344	<0.1	<0.02			
Dichlorvos	<0.01 µg/l	TM344	<0.1	<0.02			
Dichlobenil	<0.01 µg/l	TM344	<0.1	<0.02			
Mevinphos	<0.01 µg/l	TM344	<0.1	<0.02			
Tecnazene	<0.01 µg/l	TM344	<0.1	<0.02			
Hexachlorobenzene	<0.01 µg/l	TM344	<0.1	<0.02			
Demeton-S-methyl	<0.01 µg/l	TM344	<0.1	<0.02			
Phorate	<0.01 µg/l	TM344	<0.1	<0.02			
Diazinon	<0.01 µg/l	TM344	<0.1	<0.02			
Triallate	<0.01 µg/l	TM344	<0.1	<0.02			
Atrazine	<0.01 µg/l	TM344	<0.1	<0.02			
Simazine	<0.01 µg/l	TM344	<0.1	<0.02			
Disulfoton	<0.01 µg/l	TM344	<0.1	<0.02			
Propetamphos	<0.01 µg/l	TM344	<0.1	<0.02			
Chlorpyrifos-methyl	<0.01 µg/l	TM344	<0.1	<0.02			
Dimethoate	<0.01 µg/l	TM344	<0.1	<0.02			
Pirimiphos-methyl	<0.01 µg/l	TM344	<0.1	<0.02			
Chlorpyrifos	<0.01 µg/l	TM344	<0.1	<0.02			
Methyl Parathion	<0.01 µg/l	TM344	<0.1	<0.02			
Malathion	<0.01 µg/l	TM344	<0.1	<0.02			
Fenthion	<0.01 µg/l	TM344	<0.1	<0.02			



CERTIFICATE OF ANALYSIS

Validated

SDG: 190924-43
Location: Docks Way

Client Reference: Ph2 Leachate Sept Part 1
Order Number: 700145539

Report Number: 527548
Superseded Report: 527304

SVOC MS (W) - Aqueous

Results Legend			Customer Sample Ref.	C3	C2B			
# ISO17025 accredited. M mCERTS accredited. aq Aqueous / settled sample. diss.filt Dissolved / filtered sample. tot.unfilt Total / unfiltered sample. * Subcontracted - refer to subcontractor report for accreditation status. ** % recovery of the surrogate standard to check the efficiency of the method. The results of individual compounds within samples aren't corrected for the recovery. (F) Trigger breach confirmed 1.3x5@ Sample deviation (see appendix)	Customer Sample Ref.	C3	C2B					
	Depth (m)	0.00 - 0.00	0.00 - 0.00					
	Sample Type	Land Leachate (LE)	Land Leachate (LE)					
	Date Sampled	24/09/2019	24/09/2019					
	Sampled Time	.	.					
	Date Received	24/09/2019	24/09/2019					
	SDG Ref	190924-43	190924-43					
	Lab Sample No.(s)	20788079	20788089					
	AGS Reference							
Component	LOD/Units	Method						
1,2,4-Trichlorobenzene (aq)	<1 µg/l	TM176	<20	<20				
1,2-Dichlorobenzene (aq)	<1 µg/l	TM176	<20	<20				
1,3-Dichlorobenzene (aq)	<1 µg/l	TM176	<20	<20				
1,4-Dichlorobenzene (aq)	<1 µg/l	TM176	<20	<20				
2,4,5-Trichlorophenol (aq)	<1 µg/l	TM176	<20	<20				
2,4,6-Trichlorophenol (aq)	<1 µg/l	TM176	<20	<20				
2,4-Dichlorophenol (aq)	<1 µg/l	TM176	<20	<20				
2,4-Dimethylphenol (aq)	<1 µg/l	TM176	<20	<20				
2,4-Dinitrotoluene (aq)	<1 µg/l	TM176	<20	<20				
2,6-Dinitrotoluene (aq)	<1 µg/l	TM176	<20	<20				
2-Chloronaphthalene (aq)	<1 µg/l	TM176	<20	<20				
2-Chlorophenol (aq)	<1 µg/l	TM176	<20	<20				
2-Methylnaphthalene (aq)	<1 µg/l	TM176	<20	<20				
2-Methylphenol (aq)	<1 µg/l	TM176	38.9	<20				
2-Nitroaniline (aq)	<1 µg/l	TM176	<20	<20				
2-Nitrophenol (aq)	<1 µg/l	TM176	<20	<20				
3-Nitroaniline (aq)	<1 µg/l	TM176	<20	<20				
4-Bromophenylphenylether (aq)	<1 µg/l	TM176	<20	<20				
4-Chloro-3-methylphenol (aq)	<1 µg/l	TM176	<20	<20				
4-Chloroaniline (aq)	<1 µg/l	TM176	<20	<20				
4-Chlorophenylphenylether (aq)	<1 µg/l	TM176	<20	<20				
4-Methylphenol (aq)	<1 µg/l	TM176	<20	<20				
4-Nitroaniline (aq)	<1 µg/l	TM176	<20	<20				
4-Nitrophenol (aq)	<1 µg/l	TM176	<20	<20				
Azobenzene (aq)	<1 µg/l	TM176	<20	<20				
Acenaphthylene (aq)	<1 µg/l	TM176	<20	<20				
Acenaphthene (aq)	<1 µg/l	TM176	<20	<20				
Anthracene (aq)	<1 µg/l	TM176	<20	<20				
bis(2-Chloroethyl)ether (aq)	<1 µg/l	TM176	<20	<20				
bis(2-Chloroethoxy)methane (aq)	<1 µg/l	TM176	<20	<20				
bis(2-Ethylhexyl) phthalate (aq)	<2 µg/l	TM176	<40	<40				
Butylbenzyl phthalate (aq)	<1 µg/l	TM176	<20	<20				



CERTIFICATE OF ANALYSIS

Validated

SDG: 190924-43
Location: Docks Way

Client Reference: Ph2 Leachate Sept Part 1
Order Number: 700145539

Report Number: 527548
Superseded Report: 527304

SVOC MS (W) - Aqueous

Results Legend		Customer Sample Ref.	C3	C2B			
#	ISO17025 accredited.	Depth (m) Sample Type Date Sampled Sampled Time Date Received SDG Ref Lab Sample No.(s) AGS Reference	0.00 - 0.00	0.00 - 0.00			
M	mCERTS accredited.		Land Leachate (LE)	Land Leachate (LE)			
aq	Aqueous / settled sample.		24/09/2019	24/09/2019			
diss.filt	Dissolved / filtered sample.						
tot.unfilt	Total / unfiltered sample.						
*	Subcontracted - refer to subcontractor report for accreditation status.						
**	% recovery of the surrogate standard to check the efficiency of the method. The results of individual compounds within samples aren't corrected for the recovery		24/09/2019	24/09/2019			
(F)	Trigger breach confirmed		190924-43	190924-43			
1-3&@	Sample deviation (see appendix)		20788079	20788089			
Component	LOD/Units	Method					
Benzo(a)anthracene (aq)	<1 µg/l	TM176	<20	<20			
Benzo(b)fluoranthene (aq)	<1 µg/l	TM176	<20	<20			
Benzo(k)fluoranthene (aq)	<1 µg/l	TM176	<20	<20			
Benzo(a)pyrene (aq)	<1 µg/l	TM176	<20	<20			
Benzo(g,h,i)perylene (aq)	<1 µg/l	TM176	<20	<20			
Carbazole (aq)	<1 µg/l	TM176	<20	<20			
Chrysene (aq)	<1 µg/l	TM176	<20	<20			
Dibenzofuran (aq)	<1 µg/l	TM176	<20	<20			
n-Dibutyl phthalate (aq)	<1 µg/l	TM176	<20	<20			
Diethyl phthalate (aq)	<1 µg/l	TM176	<20	<20			
Dibenzo(a,h)anthracene (aq)	<1 µg/l	TM176	<20	<20			
Dimethyl phthalate (aq)	<1 µg/l	TM176	<20	<20			
n-Dioctyl phthalate (aq)	<5 µg/l	TM176	<100	<100			
Fluoranthene (aq)	<1 µg/l	TM176	<20	<20			
Fluorene (aq)	<1 µg/l	TM176	<20	<20			
Hexachlorobenzene (aq)	<1 µg/l	TM176	<20	<20			
Hexachlorobutadiene (aq)	<1 µg/l	TM176	<20	<20			
Pentachlorophenol (aq)	<1 µg/l	TM176	<20	<20			
Phenol (aq)	<1 µg/l	TM176	<20	<20			
n-Nitroso-n-dipropylamine (aq)	<1 µg/l	TM176	<20	<20			
Hexachloroethane (aq)	<1 µg/l	TM176	<20	<20			
Nitrobenzene (aq)	<1 µg/l	TM176	<20	<20			
Naphthalene (aq)	<1 µg/l	TM176	<20	<20			
Isophorone (aq)	<1 µg/l	TM176	<20	<20			
Hexachlorocyclopentadiene (aq)	<1 µg/l	TM176	<20	<20			
Phenanthrene (aq)	<1 µg/l	TM176	<20	<20			
Indeno(1,2,3-cd)pyrene (aq)	<1 µg/l	TM176	<20	<20			
Pyrene (aq)	<1 µg/l	TM176	<20	<20			
SVOC TIC (aq)		TM176	Detected	Detected			
Total SVOC TIC	<10 µg/l	TM176	16700	4550			
Benzothiazolone	µg/l	TM176	7520				
Diterbutylhydroxyphenylpropionic acid	µg/l	TM176	1560	613			



CERTIFICATE OF ANALYSIS

Validated

SDG:	190924-43	Client Reference:	Ph2 Leachate Sept Part 1	Report Number:	527548
Location:	Docks Way	Order Number:	700145539	Superseded Report:	527304

Table of Results - Appendix

Method No	Reference	Description
Calculation		
TM043	Method 2320B, AWWA/APHA, 20th Ed., 1999 / BS 2690: Part109 1984	Determination of alkalinity in aqueous samples
TM045	MEWAM BOD5 2nd Ed.HMSO 1988 / Method 5210B, AWWA/APHA, 20th Ed., 1999; SCA Blue Book 130	Determination of BOD5 (ATU) Filtered by Oxygen Meter on liquids
TM090	Method 5310, AWWA/APHA, 20th Ed., 1999 / Modified: US EPA Method 415.1 & 9060	Determination of Total Organic Carbon/Total Inorganic Carbon in Water and Waste Water
TM099	BS 2690: Part 7:1968 / BS 6068: Part2.11:1984	Determination of Ammonium in Water Samples using the Kone Analyser
TM101	Method 4500B & C, AWWA/APHA, 20th Ed., 1999	Determination of Sulphide in soil and water samples using the Kone Analyser
TM107	ISO 6060-1989	Determination of Chemical Oxygen Demand using COD Dr Lange Kit
TM120	Method 2510B, AWWA/APHA, 20th Ed., 1999 / BS 2690: Part 9:1970	Determination of Electrical Conductivity using a Conductivity Meter
TM152	Method 3125B, AWWA/APHA, 20th Ed., 1999	Analysis of Aqueous Samples by ICP-MS
TM172	Analysis of Petroleum Hydrocarbons in Environmental Media – Total Petroleum Hydrocarbon Criteria	EPH in Waters
TM176	EPA 8270D Semi-Volatile Organic Compounds by Gas Chromatography/Mass Spectrometry (GC/MS)	Determination of SVOCs in Water by GCMS
TM183	BS EN 23506:2002, (BS 6068-2.74:2002) ISBN 0 580 38924 3	Determination of Trace Level Mercury in Waters and Leachates by PSA Cold Vapour Atomic Fluorescence Spectrometry
TM184	EPA Methods 325.1 & 325.2,	The Determination of Anions in Aqueous Matrices using the Kone Spectrophotometric Analysers
TM226	In-House Method	Determination of Anions in Waters using Ion Chromatography
TM227	Standard methods for the examination of waters and wastewaters 20th Edition, AWWA/APHA Method 4500.	Determination of Total Cyanide, Free (Easily Liberatable) Cyanide and Thiocyanate
TM256	The measurement of Electrical Conductivity and the Laboratory determination of pH Value of Natural, Treated and Wastewaters. HMSO, 1978. ISBN 011 751428 4.	Determination of pH in Water and Leachate using the GLpH pH Meter
TM259	by HPLC	Determination of Phenols in Waters and Leachates by HPLC
TM328		
TM343	EPA 8270D - Semi-Volatile Organic Compounds by Gas Chromatography/Mass Spectrometry (GC/MS)	Determination of Selected Pesticides (Suite I) in Liquids by GCMS
TM344	EPA 8270D – Semi-Volatile Organic Compounds by Gas Chromatography/Mass Spectrometry (GC/MS)	Determination of selected pesticides (Suite II) by GCMS
TM345	EPA 8270D – Semi-Volatile Organic Compounds by Gas Chromatography/Mass Spectrometry (GC/MS)	Determination of selected pesticides (Suite III) by GCMS
TM398		Pyrethroids in water by GC-MS

NA = not applicable.

Chemical testing (unless subcontracted) performed at ALS Environmental Hawarden (Method codes TM) or ALS Environmental Aberdeen (Method codes S).



CERTIFICATE OF ANALYSIS

Validated

SDG: 190924-43 Client Reference: Ph2 Leachate Sept Part 1 Report Number: 527548
 Location: Docks Way Order Number: 700145539 Superseded Report: 527304

Test Completion Dates

Lab Sample No(s)	20788079	20788089
Customer Sample Ref.	C3	C2B
AGS Ref.		
Depth	0.00 - 0.00	0.00 - 0.00
Type	Land Leachate	Land Leachate

Alkalinity as CaCO3	01-Oct-2019	30-Sep-2019
Alkalinity Filtered as CaCO3	01-Oct-2019	01-Oct-2019
Ammoniacal Nitrogen	03-Oct-2019	30-Sep-2019
Anions by ion Chromatography	03-Oct-2019	
Anions by Kone (w)		01-Oct-2019
BOD True Total	02-Oct-2019	02-Oct-2019
COD Unfiltered	30-Sep-2019	30-Sep-2019
Conductivity (at 20 deg.C)	30-Sep-2019	01-Oct-2019
Cyanide Comp/Free/Total/Thiocyanate	30-Sep-2019	28-Sep-2019
Dissolved Metals by ICP-MS	24-Oct-2019	08-Oct-2019
EPH (DRO) (C10-C40) Aqueous (W)	02-Oct-2019	02-Oct-2019
Ionic Balance	28-Oct-2019	21-Oct-2019
Mercury Dissolved	30-Sep-2019	30-Sep-2019
Nitrite by Kone (w)	26-Sep-2019	26-Sep-2019
Organotins in Aqueous Samples	01-Oct-2019	01-Oct-2019
Pesticides (Suite I) by GCMS	30-Sep-2019	30-Sep-2019
Pesticides (Suite II) by GCMS	01-Oct-2019	01-Oct-2019
Pesticides (Suite III) by GCMS	30-Sep-2019	30-Sep-2019
pH Value	30-Sep-2019	30-Sep-2019
Phenols by HPLC (W)	30-Sep-2019	30-Sep-2019
Phosphate by Kone (w)	26-Sep-2019	26-Sep-2019
Pyrethroids in water by GC-MS	30-Sep-2019	30-Sep-2019
Sulphide	01-Oct-2019	01-Oct-2019
SVOC MS (W) - Aqueous	28-Sep-2019	28-Sep-2019
Total Organic and Inorganic Carbon	27-Sep-2019	27-Sep-2019



CERTIFICATE OF ANALYSIS

Validated

SDG: 190924-43
Location: Docks Way

Client Reference: Ph2 Leachate Sept Part 1
Order Number: 700145539

Report Number: 527548
Superseded Report: 527304

Chromatogram

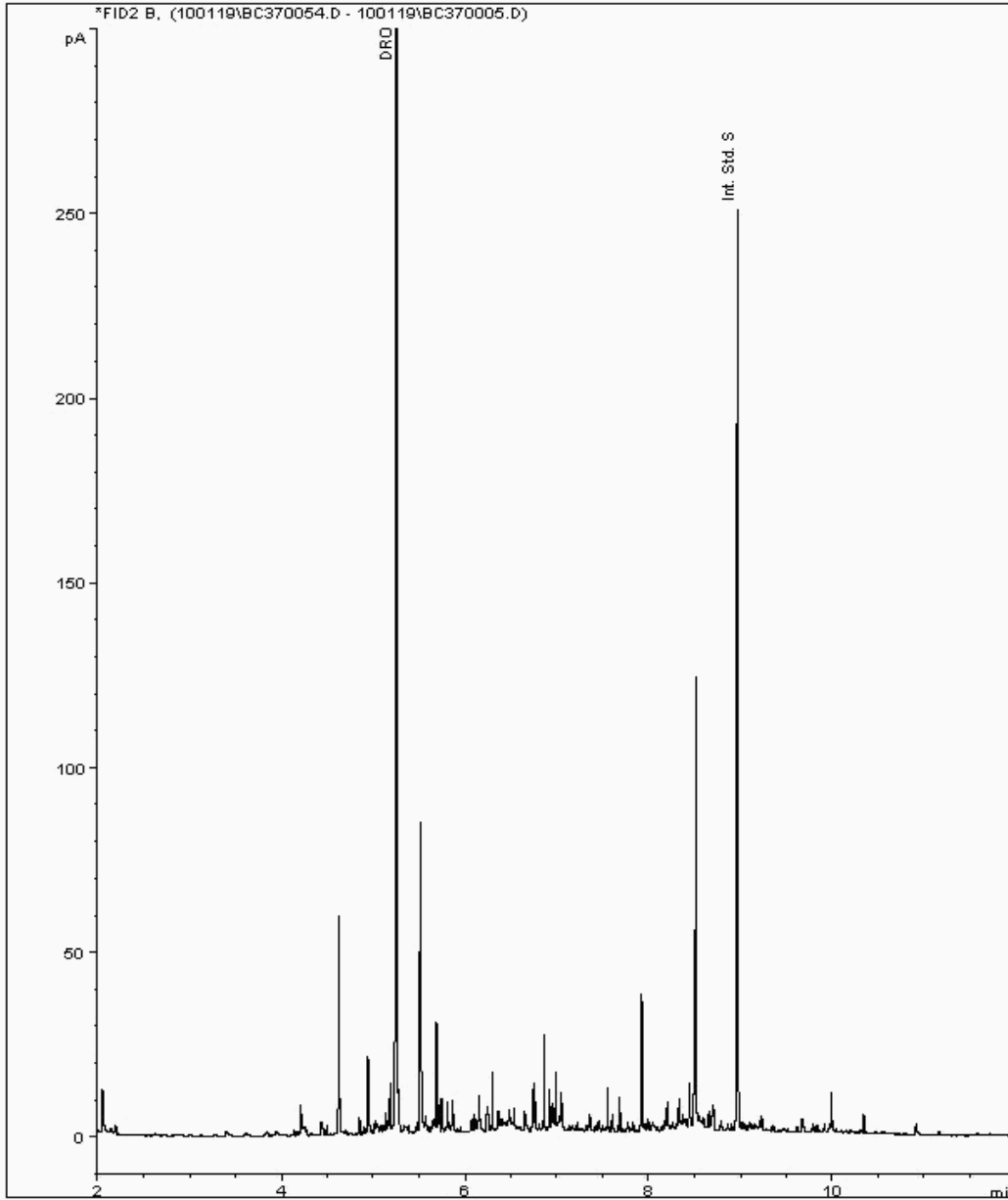
Analysis: EPH (DRO) (C10-C40) Aqueous (W)

Sample No : 20797827
Sample ID : C3

Depth : 0.00 - 0.00

EPH Range Organics (C10 - C40)

Sample Identity: 19534536-
Date Acquired : 02/10/2019 12:45:15 PM
Units : mg/l





CERTIFICATE OF ANALYSIS

Validated

SDG: 190924-43
Location: Docks Way

Client Reference: Ph2 Leachate Sept Part 1
Order Number: 700145539

Report Number: 527548
Superseded Report: 527304

Chromatogram

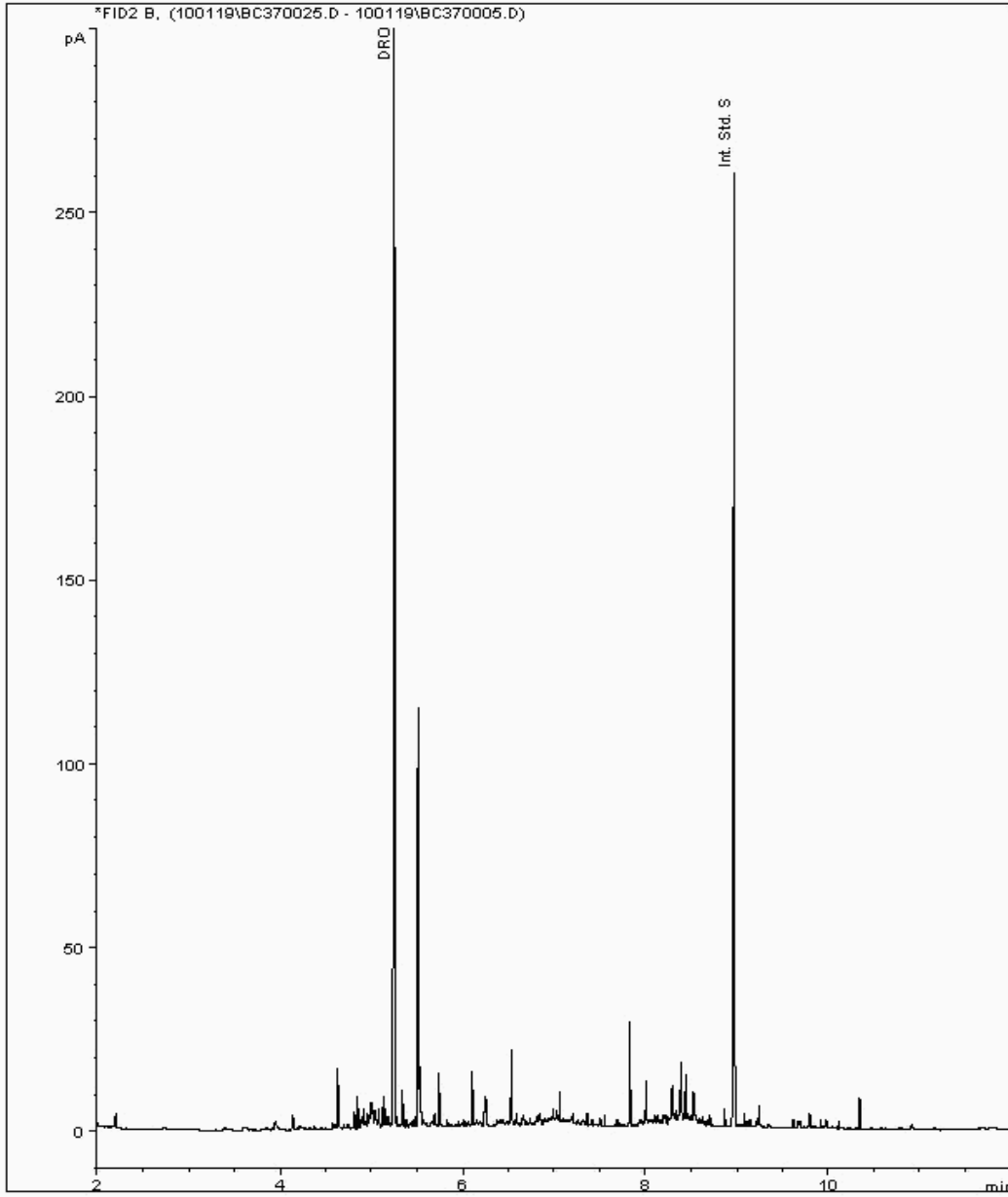
Analysis: EPH (DRO) (C10-C40) Aqueous (W)

Sample No : 20797894
Sample ID : C2B

Depth : 0.00 - 0.00

EPH Range Organics (C10 - C40)

Sample Identity: 19534569-
Date Acquired : 02/10/2019 01:26:11 PM
Units : mg/l





CERTIFICATE OF ANALYSIS

SDG: 190924-43	Client Reference: Ph2 Leachate Sept Part	Report Number: 527548
Location: Docks Way	Order Number: 700145539	Superseded Report: 527304

Appendix

General

1. Results are expressed on a dry weight basis (dried at 35°C) for all soil analyses except for the following: NRA and CEN Leach tests, flash point LOI, pH, ammonium as NH4 by the BRE method, VOC TICs and SVOC TICs.

2. If sufficient sample is received a sub sample will be retained free of charge for 30 days after analysis is completed (e-mailed) for all sample types unless the sample is destroyed on testing. The prepared soil sub sample that is analysed for asbestos will be retained for a period of 6 months after the analysis date. All bulk samples will be retained for a period of 6 months after the analysis date. All samples received and not scheduled will be disposed of one month after the date of receipt unless we are instructed to the contrary. Once the initial period has expired, a storage charge will be applied for each month or part thereof until the client cancels the request for sample storage. ALS reserve the right to charge for samples received and stored but not analysed.

3. With respect to turnaround, we will always endeavour to meet client requirements wherever possible, but turnaround times cannot be absolutely guaranteed due to so many variables beyond our control.

4. We take responsibility for any test performed by sub-contractors (marked with an asterisk). We endeavour to use UKAS/MCERTS Accredited Laboratories, who either complete a quality questionnaire or are audited by ourselves. For some determinands there are no UKAS/MCERTS Accredited Laboratories, in this instance a laboratory with a known track record will be utilised.

5. If no separate volatile sample is supplied by the client, or if a headspace or sediment is present in the volatile sample, the integrity of the data may be compromised. This will be flagged up as an invalid VOC on the test schedule and the result marked as deviating on the test certificate.

6. NDP - No determination possible due to insufficient/unsuitable sample.

7. Results relate only to the items tested.

8. LoDs (Limit of Detection) for wet tests reported on a dry weight basis are not corrected for moisture content.

9. **Surrogate recoveries** - Surrogates are added to your sample to monitor recovery of the test requested. A % recovery is reported, results are not corrected for the recovery measured. Typical recoveries for organics tests are 70-130%. Recoveries in soils are affected by organic rich or clay rich matrices. Waters can be affected by remediation fluids or high amounts of sediment. Test results are only ever reported if all of the associated quality checks pass; it is assumed that all recoveries outside of the values above are due to matrix affect.

10. Stones/debris are not routinely removed. We always endeavour to take a representative sub sample from the received sample.

11. In certain circumstances the method detection limit may be elevated due to the sample being outside the calibration range. Other factors that may contribute to this include possible interferences. In both cases the sample would be diluted which would cause the method detection limit to be raised.

12. Mercury results quoted on soils will not include volatile mercury as the analysis is performed on a dried and crushed sample.

13. For leachate preparations other than Zero Headspace Extraction (ZHE) volatile loss may occur.

14. For the BSEN 12457-3 two batch process to allow the cumulative release to be calculated, the volume of the leachate produced is measured and filtered for all tests. We therefore cannot carry out any unfiltered analysis. The tests affected include volatiles GCFID/GCMS and all subcontracted analysis.

15. Analysis and identification of specific compounds using GCFID is by retention time only, and we routinely calibrate and quantify for benzene, toluene, ethylbenzenes and xylenes (BTEX). For total volatiles in the C5-C12 range, the total area of the chromatogram is integrated and expressed as ug/kg or ug/l. Although this analysis is commonly used for the quantification of gasoline range organics (GRO), the system will also detect other compounds such as chlorinated solvents, and this may lead to a falsely high result with respect to hydrocarbons only. It is not possible to specifically identify these non-hydrocarbons, as standards are not routinely run for any other compounds, and for more definitive identification, volatiles by GCMS should be utilised.

16. We are accredited to MCERTS for sand, clay and loam/topsoil, or any of these materials - whether these are derived from naturally occurring soil profiles, or from fill/made ground, as long as these materials constitute the major part of the sample. Other coarse granular material such as concrete, gravel and brick are not accredited if they comprise the major part of the sample.

17. **Tentatively Identified Compounds (TICs)** are non-target peaks in VOC and SVOC analysis. All non-target peaks detected with a concentration above the LoD are subjected to a mass spectral library search. Non-target peaks with a library search confidence of >75% are reported based on the best mass spectral library match. When a non-target peak with a library search confidence of <75% is detected it is reported as "mixed hydrocarbons". Non-target compounds identified from the scan data are semi-quantified relative to one of the deuterated internal standards, under the same chromatographic conditions as the target compounds. This result is reported as a semi-quantitative value and reported as Tentatively Identified Compounds (TICs). TICs are outside the scope of UKAS accreditation and are not moisture corrected.

18. Sample Deviations

If a sample is classed as deviated then the associated results may be compromised.

1	Container with Headspace provided for volatiles analysis
2	Incorrect container received
3	Deviation from method
§	Sampled on date not provided
◆	Sample holding time exceeded in laboratory
@	Sample holding time exceeded due to late arrival of instructions or samples

19. Asbestos

When requested, the individual sub sample scheduled will be analysed in house for the presence of asbestos fibres and asbestos containing material by our documented in house method TM048 based on HSG 248 (2005), which is accredited to ISO17025. If a specific asbestos fibre type is not found this will be reported as "Not detected". If no asbestos fibre types are found all will be reported as "Not detected" and the sub sample analysed deemed to be clear of asbestos. If an asbestos fibre type is found it will be reported as detected (for each fibre type found). Testing can be carried out on asbestos positive samples, but, due to Health and Safety considerations, may be replaced by alternative tests or reported as No Determination Possible (NDP). The quantity of

Identification of Asbestos in Bulk Materials & Soils

The results for identification of asbestos in bulk materials are obtained from supplied bulk materials which have been examined to determine the presence of asbestos fibres using ALS (Hawarden) in-house method of transmitted/polarised light microscopy and central stop dispersion staining, based on HSG 248 (2005).

The results for identification of asbestos in soils are obtained from a homogenised sub sample which has been examined to determine the presence of asbestos fibres using ALS (Hawarden) in-house method of transmitted/polarised light microscopy and central stop dispersion staining, based on HSG 248 (2005).

Asbestos Type	Common Name
Chrysotile	White Asbestos
Amosite	Brown Asbestos
Crocidolite	Blue Asbestos
Fibrous Actinolite	-
Fibrous Anthophyllite	-
Fibrous Tremolite	-

Visual Estimation Of Fibre Content

Estimation of fibre content is not permitted as part of our UKAS accredited test other than: - Trace - Where only one or two asbestos fibres were identified.

Respirable Fibres

Respirable fibres are defined as fibres of <3 µm diameter, longer than 5 µm and with aspect ratios of at least 3:1 that can be inhaled into the lower regions of the lung and are generally acknowledged to be most important predictor of hazard and risk for cancers of the lung.

Standing Committee of Analysts, *The Quantification of Asbestos in Soil (2107)*.

Further guidance on typical asbestos fibre content of manufactured products can be found in HSG 264.

The identification of asbestos containing materials and soils falls within our schedule of tests for which we hold UKAS accreditation, however opinions, interpretations and all other information contained in the report are outside the scope of UKAS accreditation.