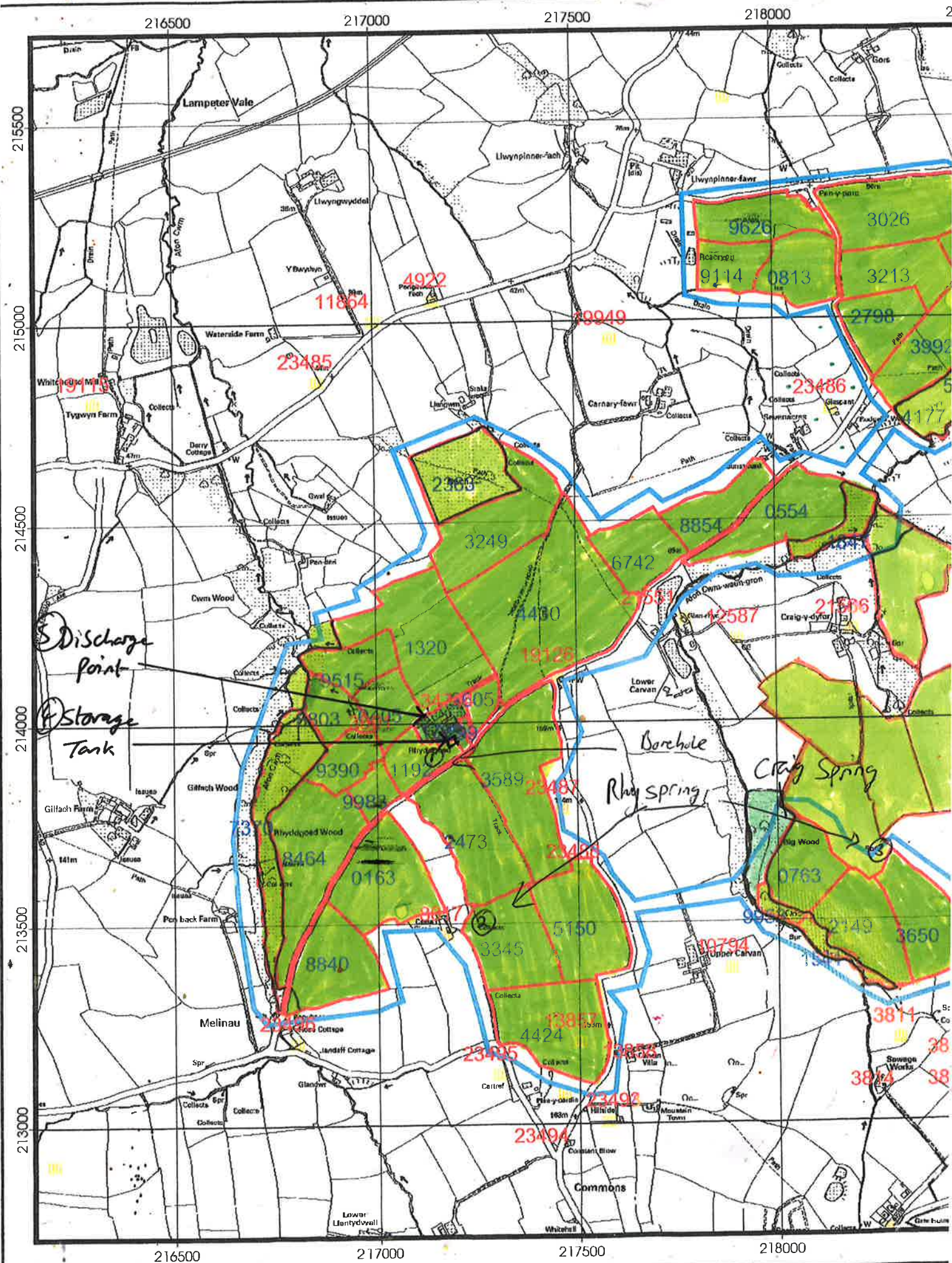


~~4.1~~ <sup>4.2</sup> Rhylgoed Site Map







# UK Grid Reference Finder

7.1 Site Map - Rhydagoel, Whallan, Cerns SA34 0NP



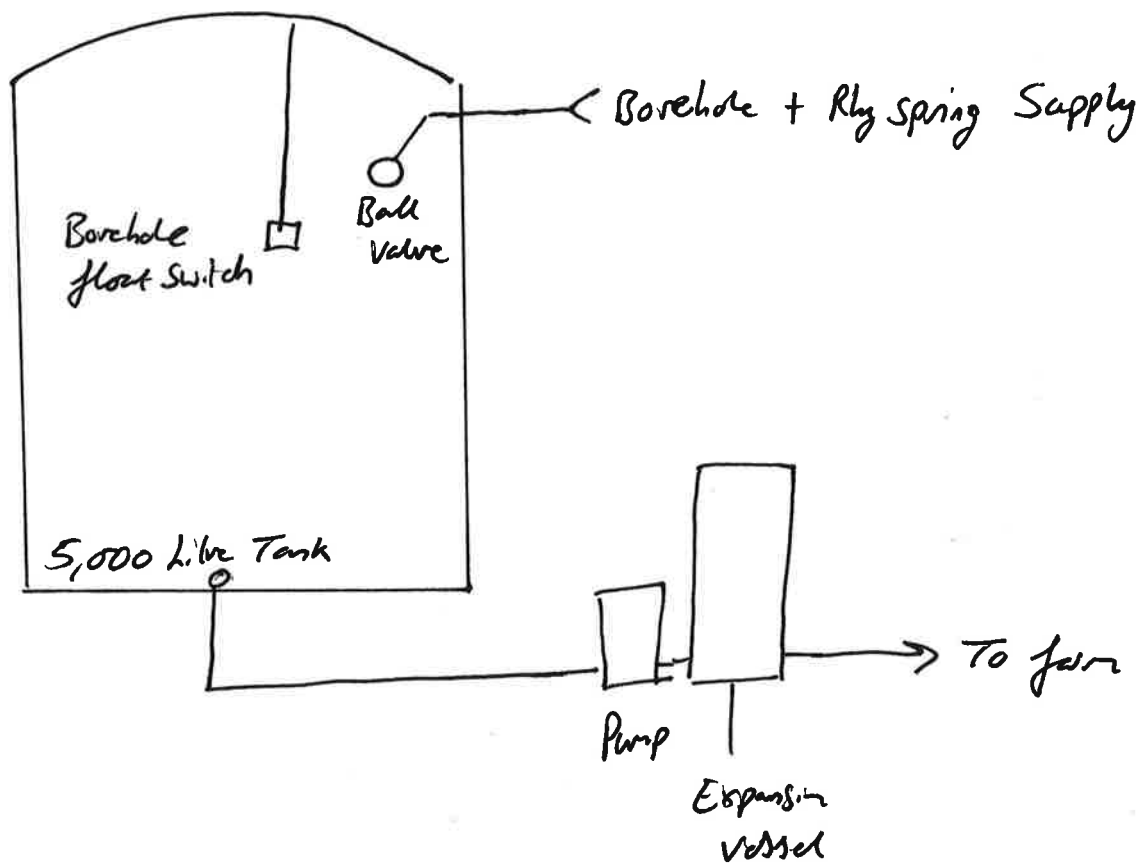
Point 3

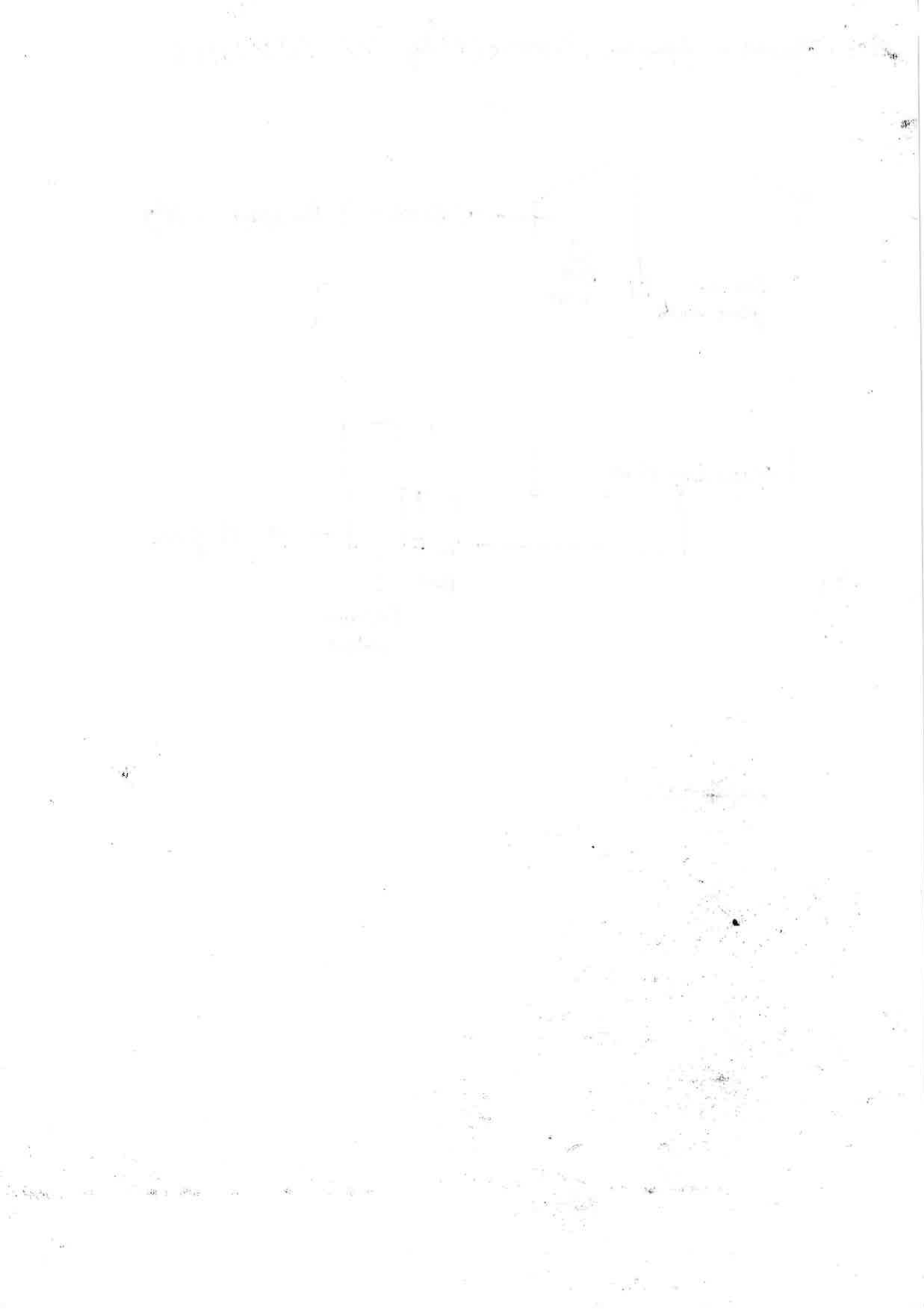
	Grid Reference	X (Eastings)	Y (Northings)	Latitude	Longitude	Description (Click to Edit)	Address	Postcode	Link	Center	Zoom	Style (click chain)
①	SN 17147 13897	217147	213897	51.793760	-4.6529165	Point C	Lampeter Velfrey, Pembrokeshire, Wales, SA67 8TR, United	SA67 8TR	<a href="#">Link</a>	<a href="#">Center</a>	<a href="#">Zoom</a>	<a href="#">Style</a>
②	SN 17252 13504	217252	213504	51.790259	-4.6511878	Point D	Tavernspite, Pembrokeshire, Wales, SA34 0NN, United King	SA34 0NN	<a href="#">Link</a>	<a href="#">Center</a>	<a href="#">Zoom</a>	<a href="#">Style</a>
③	SN 18256 13669	218256	213669	51.792074	-4.6367253	Point E	Big Wood, Troed-y-Rhiw Road, Tavernspite, Pembrokeshire,	SA34 0RA	<a href="#">Link</a>	<a href="#">Center</a>	<a href="#">Zoom</a>	<a href="#">Style</a>
④	SN 17179 13956	217179	213956	51.794297	-4.6524820	Point F	Lampeter Velfrey, Pembrokeshire, Wales, SA67 8TR, United	SA67 8TR	<a href="#">Link</a>	<a href="#">Center</a>	<a href="#">Zoom</a>	<a href="#">Style</a>
⑤	SN 17104 14056	217104	214056	51.795173	-4.6536246	Point G	Lampeter Velfrey, Pembrokeshire, Wales, SA67 8TR, United	SA67 8TR	<a href="#">Link</a>	<a href="#">Center</a>	<a href="#">Zoom</a>	<a href="#">Style</a>

- ① Borehole
- ② Rhy Spring
- ③ Craig Spring
- ④ Storage Tank
- ⑤ Discharge Point.



8.4 Absorption Equipment / Storage (4) Ref. SN 17179 13956





## 8.5 Supporting Evidence

	2011	2012	2013	2014	2015	2016	2017
Milk Production (Litres)	1,564,842	1,543,549	1,645,130	1,983,584	2,105,195	2,107,376	2,110,674
Dairy Cows	199	207	209	248	266	273	271
Dairy/Beef 0-12 Months	140	114	98	83	83	90	107
Dairy/Beef 12-24 Months	96	95	70	73	60	63	65
Dairy/Beef 24 Months+	48	25	28	13	10	6	7

### Daily Water Consumption (Litres)

	2011	2012	2013	2014	2015	2016	2017
Dairy Cows @ 70 Litres/Hd	13,900	14,500	14,600	17,400	18,600	19,100	19,000
Dairy/Beef 0-12 Months @ 25 Litres/Hd	3,500	2,900	2,500	2,100	2,100	2,300	2,700
Dairy/Beef 12-24 Months @ 40 Litres/Hd	3,800	3,800	2,800	2,900	2,400	2,500	2,600
Dairy/Beef Months+ @ 45 Litres/Hd	2,200	1,100	1,300	600	500	300	300
Plate Cooler 2.0 Litres/Litre Milk	8,600	8,500	9,000	10,900	11,500	11,500	11,600
Wash Down - Recycled Plate Cooler Water Plus	800	800	800	800	800	800	800
Milk Plant - (14*50 Litres/Day)	700	700	700	700	700	700	700
Bulk Tank - 7000 * 5%	350	350	350	350	350	350	350
House & Miscellaneous	800	800	800	800	800	800	800
<b>Total Litres /Day</b>	<b>34,650</b>	<b>33,450</b>	<b>32,850</b>	<b>36,550</b>	<b>37,750</b>	<b>38,350</b>	<b>38,850</b>

Rhyddgoed Borehole	24	23	23	26	26	27	27
Rhyddgoed Spring	8	8	8	9	9	9	9
Craig Y Dyfor Spring	1	1	1	1	1	1	1
Mains Water	2	2	2	2	2	2	2
<b>Total M3/Day</b>	<b>35</b>	<b>33</b>	<b>33</b>	<b>37</b>	<b>38</b>	<b>38</b>	<b>39</b>

Rhyddgoed Borehole	8,800	8,500	8,300	9,300	9,700	9,800	10,000
Rhyddgoed Spring	2,900	2,800	2,800	3,100	3,200	3,300	3,300
Craig Y Dyfor Spring	300	300	300	300	300	300	300
Mains Water	600	600	600	600	600	600	600
<b>Total M3/Year</b>	<b>12,650</b>	<b>12,210</b>	<b>11,990</b>	<b>13,340</b>	<b>13,780</b>	<b>14,000</b>	<b>14,180</b>

