



Glamorganshire

Published 1901

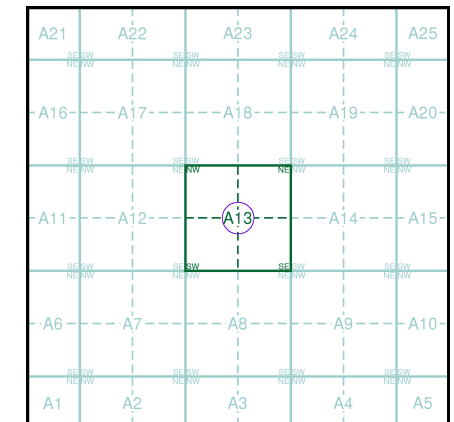
Source map scale - 1:10,560

The historical maps shown were reproduced from maps predominantly held at the scale adopted for England, Wales and Scotland in the 1840's. In 1854 the 1:2,500 scale was adopted for mapping urban areas; these maps were used to update the 1:10,560 maps. The published date given therefore is often some years later than the surveyed date. Before 1938, all OS maps were based on the Cassini Projection, with independent surveys of a single county or group of counties, giving rise to significant inaccuracies in outlying areas. In the late 1940's, a Provisional Edition was produced, which updated the 1:10,560 mapping from a number of sources. The maps appear unfinished - with all military camps and other strategic sites removed. These maps were initially overprinted with the National Grid. In 1970, the first 1:10,000 maps were produced using the Transverse Mercator Projection. The revision process continued until recently, with new editions appearing every 10 years or so for urban areas.

Map Name(s) and Date(s)

043SE 1901 1:10,560	043ASW 1901 1:10,560
047NE 1901 1:10,560	

Historical Map - Slice A



Order Details

Order Number: 197133902_1_1
Customer Ref: 15264-DE
National Grid Reference: 321460, 176300
Slice: A
Site Area (Ha): 0.01
Search Buffer (m): 1000

Site Details

Site at 321450, 176300



Tel: 0844 844 9952
Fax: 0844 844 9951
Web: www.envirocheck.co.uk



Glamorganshire

Published 1922

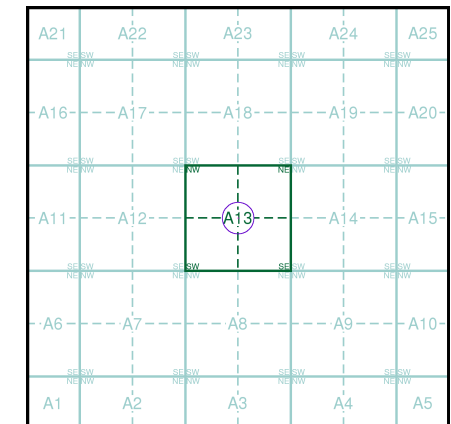
Source map scale - 1:10,560

The historical maps shown were reproduced from maps predominantly held at the scale adopted for England, Wales and Scotland in the 1840's. In 1854 the 1:2,500 scale was adopted for mapping urban areas; these maps were used to update the 1:10,560 maps. The published date given therefore is often some years later than the surveyed date. Before 1938, all OS maps were based on the Cassini Projection, with independent surveys of a single county or group of counties, giving rise to significant inaccuracies in outlying areas. In the late 1940's, a Provisional Edition was produced, which updated the 1:10,560 mapping from a number of sources. The maps appear unfinished - with all military camps and other strategic sites removed. These maps were initially overprinted with the National Grid. In 1970, the first 1:10,000 maps were produced using the Transverse Mercator Projection. The revision process continued until recently, with new editions appearing every 10 years or so for urban areas.

Map Name(s) and Date(s)

043SE	1922	1:10,560
047NE	1922	1:10,560

Historical Map - Slice A



Order Details

Order Number: 197133902_1_1
Customer Ref: 15264-DE
National Grid Reference: 321460, 176300
Slice: A
Site Area (Ha): 0.01
Search Buffer (m): 1000

Site Details

Site at 321450, 176300

Landmark
INFORMATION GROUP

Tel: 0844 844 9952
Fax: 0844 844 9951
Web: www.envirocheck.co.uk



Glamorganshire

Published 1938 - 1947

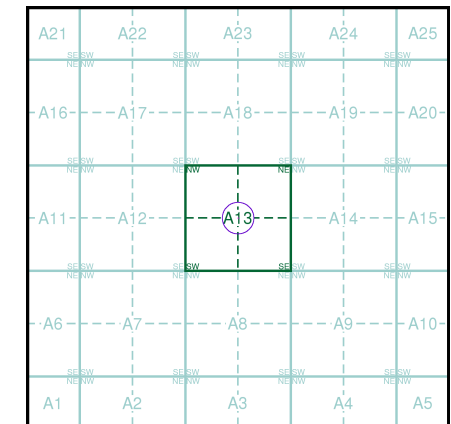
Source map scale - 1:10,560

The historical maps shown were reproduced from maps predominantly held at the scale adopted for England, Wales and Scotland in the 1840's. In 1854 the 1:2,500 scale was adopted for mapping urban areas; these maps were used to update the 1:10,560 maps. The published date given therefore is often some years later than the surveyed date. Before 1938, all OS maps were based on the Cassini Projection, with independent surveys of a single county or group of counties, giving rise to significant inaccuracies in outlying areas. In the late 1940's, a Provisional Edition was produced, which updated the 1:10,560 mapping from a number of sources. The maps appear unfinished - with all military camps and other strategic sites removed. These maps were initially overprinted with the National Grid. In 1970, the first 1:10,000 maps were produced using the Transverse Mercator Projection. The revision process continued until recently, with new editions appearing every 10 years or so for urban areas.

Map Name(s) and Date(s)

043SE	1938	1:10,560	043A00	1947	1:10,560
-------	------	----------	--------	------	----------

Historical Map - Slice A



Order Details

Order Number: 197133902_1_1
Customer Ref: 15264-DE
National Grid Reference: 321460, 176300
Slice: A
Site Area (Ha): 0.01
Search Buffer (m): 1000

Site Details

Site at 321450, 176300



Tel: 0844 844 9952
Fax: 0844 844 9951
Web: www.envirocheck.co.uk



Glamorganshire

Published 1947 - 1954

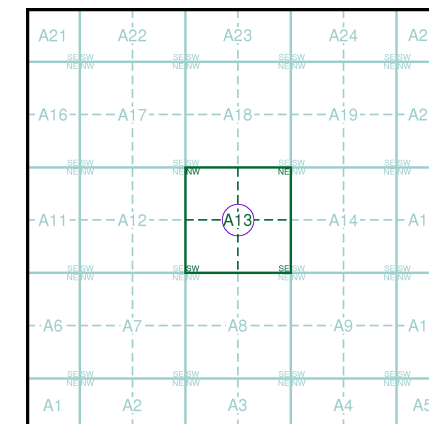
Source map scale - 1:10,560

The historical maps shown were reproduced from maps predominantly held at the scale adopted for England, Wales and Scotland in the 1840's. In 1854 the 1:2,500 scale was adopted for mapping urban areas; these maps were used to update the 1:10,560 maps. The published date given therefore is often some years later than the surveyed date. Before 1938, all OS maps were based on the Cassini Projection, with independent surveys of a single county or group of counties, giving rise to significant inaccuracies in outlying areas. In the late 1940's, a Provisional Edition was produced, which updated the 1:10,560 mapping from a number of sources. The maps appear unfinished - with all military camps and other strategic sites removed. These maps were initially overprinted with the National Grid. In 1970, the first 1:10,000 maps were produced using the Transverse Mercator Projection. The revision process continued until recently, with new editions appearing every 10 years or so for urban areas.

Map Name(s) and Date(s)

043SE	1951	1:10,560
047NE	1947	1:10,560

Historical Map - Slice A



Order Details

Order Number: 197133902_1_1
Customer Ref: 15264-DE
National Grid Reference: 321460, 176300
Slice: A
Site Area (Ha): 0.01
Search Buffer (m): 1000

Site Details

Site at 321450, 176300

Landmark
INFORMATION GROUP

Tel: 0844 844 9952
Fax: 0844 844 9951
Web: www.envirocheck.co.uk



Historical Aerial Photography

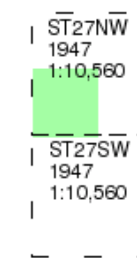
Published 1947

Source map scale - 1:10,560

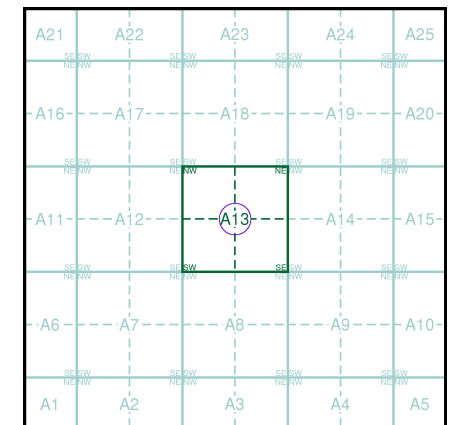
The Historical Aerial Photos were produced by the Ordnance Survey at a scale of 1:1,250 and 1:10,560 from Air Force photography. They were produced between 1944 and 1951 as an interim measure, pending preparation of conventional mapping, due to post war resource shortages. New security measures in the 1950's meant that every photograph was re-checked for potentially unsafe information with security sites replaced by fake fields or clouds. The original editions were withdrawn and only later made available after a period of fifty years although due to the accuracy of the editing, without viewing both revisions it is not easy to spot the edits. Where available Landmark have included both revisions.

© Landmark Information Group and/or Data Suppliers 2010.

Map Name(s) and Date(s)



Historical Aerial Photography - Slice A



Order Details

Order Number: 197133902_1_1
Customer Ref: 15264-DE
National Grid Reference: 321460, 176300
Slice: A
Site Area (Ha): 0.01
Search Buffer (m): 1000

Site Details

Site at 321450, 176300



Tel: 0844 844 9952
Fax: 0844 844 9951
Web: www.envirocheck.co.uk





Historical Aerial Photography

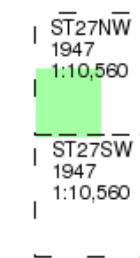
Published 1947

Source map scale - 1:10,560

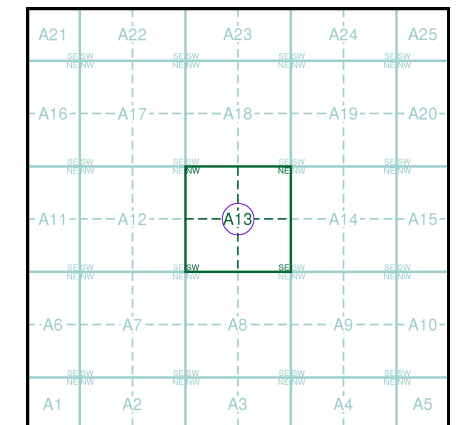
The Historical Aerial Photos were produced by the Ordnance Survey at a scale of 1:1,250 and 1:10,560 from Air Force photography. They were produced between 1944 and 1951 as an interim measure, pending preparation of conventional mapping, due to post war resource shortages. New security measures in the 1950's meant that every photograph was re-checked for potentially unsafe information with security sites replaced by fake fields or clouds. The original editions were withdrawn and only later made available after a period of fifty years although due to the accuracy of the editing, without viewing both revisions it is not easy to spot the edits. Where available Landmark have included both revisions.

© Landmark Information Group and/or Data Suppliers 2010.

Map Name(s) and Date(s)



Historical Aerial Photography - Slice A



Order Details

Order Number: 197133902_1_1
Customer Ref: 15264-DE
National Grid Reference: 321460, 176300
Slice: A
Site Area (Ha): 0.01
Search Buffer (m): 1000

Site Details

Site at 321450, 176300



Tel: 0844 844 9952
Fax: 0844 844 9951
Web: www.envirocheck.co.uk