

Method Statement

1. Summary

Please provide a brief summary of the application including location of the works (coordinates - lat/long, decimal degrees). For activities that cover a large area please provide coordinates of the approximate extent of works.

The location(s) of the construction phase is the River Dovey Viaduct Number 1, which carries a single line DJP at 79 miles 375 yards, grid reference SN6946397890 over the tidal River Dovey or Afon Dyfi. The viaduct is approximately 110m long and has eleven timber trestles on the north side and four on the south. The main section has four composite steel spans and girders. There is a bridge keeper's house at the western end. The structure sits on the Cambrian railway line between Dovey Junction & Penhelig Stations.

Dovey Junction Viaduct No1. DJP, 79 m, 352yds

Site Access Address: Unnamed Road, Off A487 at Glandyfi, SY20 8SU.

Grid Ref: SN 69460 97892

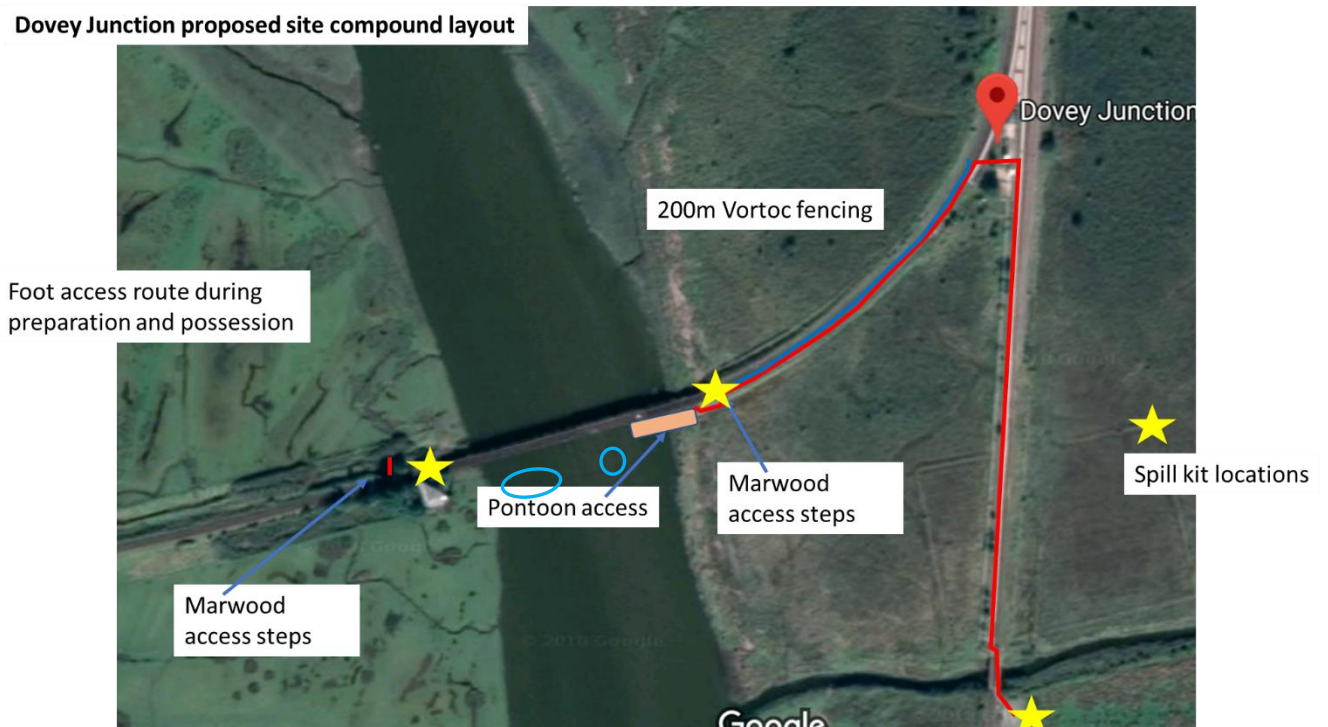


Figure 1: Site Layout

2. Scope of Works

Please provide a full description of all proposed works including:

This method statement details the works at Aberdovey viaduct number 1 which consist of the following repairs:

Work type	Carried out:
Trestle 2 Installation of crosshead to diagonal stainless steel connection plate	Dayshift
Trestle 4 Installation of crosshead to diagonal stainless steel connection plate	Dayshift
Trestle 5 Pack splice to piles 3 and 4 including new stainless steel clamps	Dayshift low tide
Trestle 11 Replacement of piles 2, 3, 4, 6 and 7	Within blockade day or night
Trestle 12 Replacement of piles 4, 6, 7, 8 and Low Mileage diagonal	Within blockade day or night
Trestle 14 Replacement of packs to top of piles 3 and 5 and steelwork to Pile 6	Dayshift
Trestle 15 Replacement of piles to 2,5,7 and installation of short term pile splice assembly to pile 6	Within blockade day or night
Trestle 16 Installation of short term pile of short term pile splice assembly to pile 6	Within blockade day or night
Trestle 18 Replacement of Beam 3 inner corbel and installation of short term splice assembly to piles 2, 3 and 5	Within blockade day or night
Trestle 20 Installation of short term connection between cross head and diagonal	Dayshift
Trestle 21 Replacement of both diagonals and installation of short term connection between cross head and diagonal	Within blockade day or night
Trestle 22 Temporary holding repairs to back of wall timbers	Dayshift
Scaffold access and temporary works	Dayshift
Delivery of scaffold materials and work materials	Saturday nightshift

Mobilisation – 2nd to 13th March 2020 – dayshift working

A site compound will be set up on NR land at the location in figure 1. Welfare facilities will consist of office, canteen, drying room and toilet block.

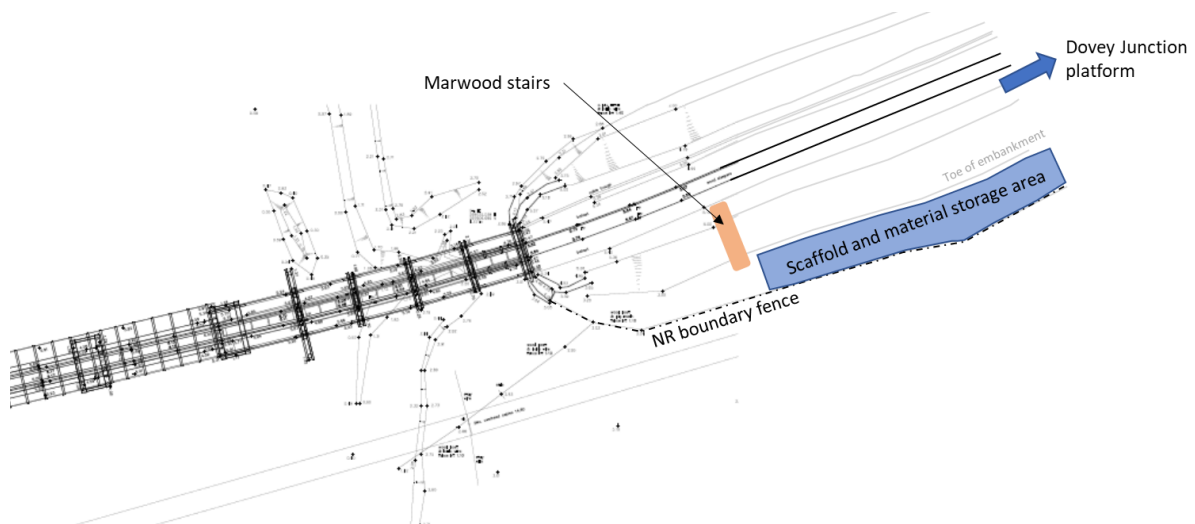
Vortok fencing will be set up from Dovey Junction Station to the east side of the viaduct and grass will be cut within the railway cess to create a safe access route for site access on foot.

Underwater clearance and survey, 16th to 27th March 2020 – dayshift working

Underwater examination of piles including clearing of debris (tree branches etc) to allow replacement of timber piles and installation of new stainless-steel splice clamps. This work is carried out from pontoons with dive equipment located on them. Small boats are used for rescue cover and to move pontoons, manpower and equipment. Equipment will be taken to site using trolleys on the track in line blocks during the day.

Scaffold erection, 23rd March to 3rd April 2020 – dayshift working

Due to limited access to the area Scaffold equipment will be delivered to the bottom of the embankment (NR land) during Saturday night possessions 21/3/20 and 28/3/20 see plan below. The scaffolding will then be moved by hand and pontoon to required locations



Scaffolding (shown in green and blue in fig 2) will be erected to the specific trestles and spans with manpower accessing on foot from the compound via Dovey Platform

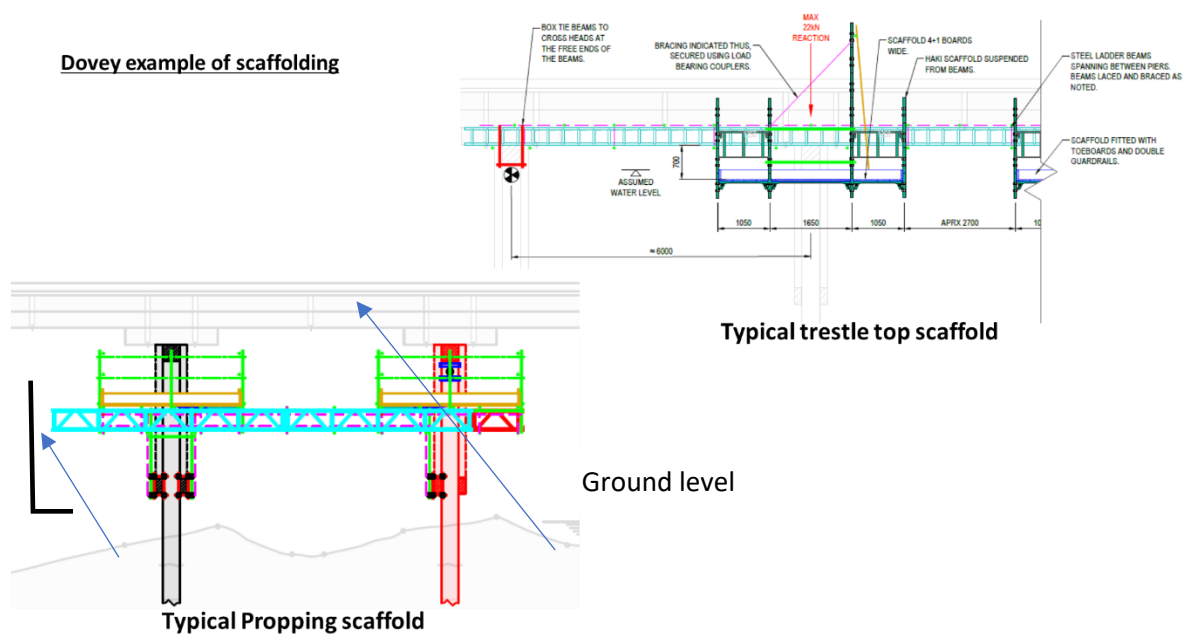


Figure 2: Scaffold prop arrangement in advance of deck removal

Main Works within 8 day blockade of line, 3rd April to 12th April 2020 – 24hour working

A road rail crane and two trailers loaded with temporary work and one trailer loaded with timber will travel to site from the RRAP at Paddy's Crossing at the start of the blockade.

The temporary works will be set up above required trestle /spans in order to lift the weight from the trestle and allow replacement of piles. See fig 3 for example of temp work

The crane will be used to lift new and replaced timbers between track level and pontoons on river.



The timbers will be replaced as per table in section 1 below is typical pile replacement (replaced items are shown in red).

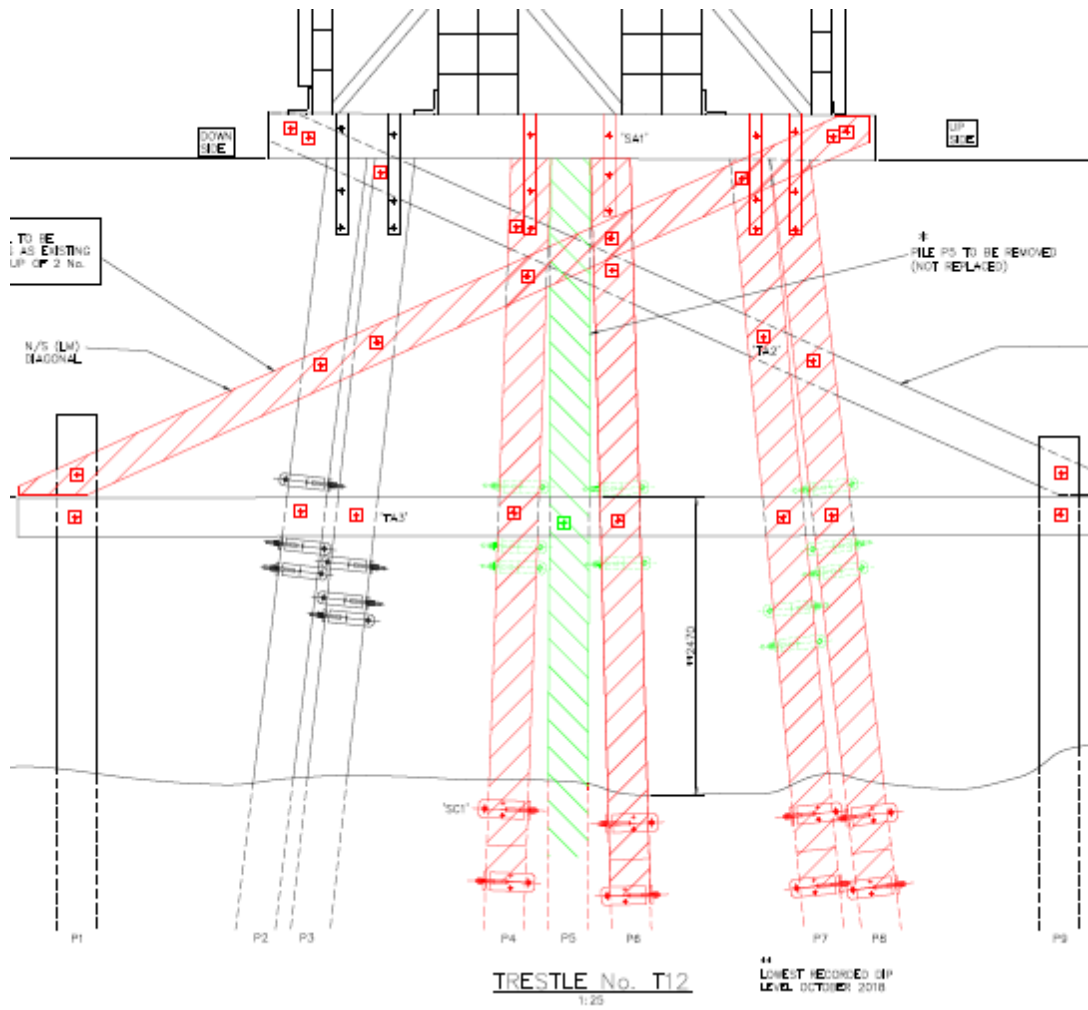


Figure 3: Example of timber pile replacement

3. Access and working areas

Please provide details of access to the site and working areas. This should include:

- Attached map of the access/egress route and working areas (annotated aerial image and/or OS map)
- Predicted plant/vehicle movements
- Storage areas for plant, equipment and materials (if required)
- Risks to navigation

See Figure 1: Site Layout for access and egress route

All plant, labour and materials will access the viaduct from the railway line. Vortok fencing will be set up from Dovey Junction Station to the east side of the viaduct and grass will be cut within the railway cess to create a safe access route for site access on foot. A temporary stairway will be installed down the embankment and a short section of fence taken down to facilitate pedestrian access to waters edge as shown in appendix. The pontoons are made of modular components and will be carried along this route and assembled at the rivers edge.

The road rail monster crane will travel along the railway track from Tywyn direction, having accessed the line at Paddy's Crossing.

Materials will be stored on the railway embankment, track trailers or pontoons. Materials will not be stored where river levels could affect them

- We have contacted the Maritime & Coastguard Agency and await their formal response; however the river is not navigable at this location and previously, the risk to navigation has been assessed as low by the Maritime & Coastguard Agency. We will comply with the following advice
 - Notify local marine users, noting the number of recreational craft at Aberdovey Marina. Contacting the local Harbour Master (address and telephone number available on Google) would be advised. – 01654 767626, 07879 433148
 - Ensure suitable bunding, storage facilities are employed to prevent the release of fuel oils, lubricating fluids associated with the plant and equipment into the marine environment.
 - Ensure that the works are sufficiently marked, and that adequate precautions are taken to secure any objects/personnel from the bridge so that they do not pose a hazard to any marine users transiting below.

4. Environmental mitigation

Please list appropriate mitigation measures to minimise impacts on the marine environment these may include:

- Pollution prevention and control procedure (guidance available at: <http://www.netregs.org.uk/media/1304/gpp-5-works-and-maintenance-in-or-near-water.pdf>)
- Spill response kits
- Minimise plant traffic
- Designated access and egress routes
- Storage of materials (fuel, chemicals, construction waste)
- Biosecurity (guidance available at <http://www.snh.gov.uk/docs/A1294630.pdf>)

Note: To assist you, the following mitigation statements will be used as conditions within the licence. By signing this method statement you will be agreeing to adhere to these restrictions. If you are unable to do this, the application will not qualify as Band 1.

- ✓ All equipment, temporary structures, access tracks, waste and/or debris associated with the works will be removed on completion of the works.
- ✓ Bunding, storage facilities and spill kits will be employed to contain and prevent the release of fuel, oils and chemicals associated with the plant, refuelling and construction equipment into the marine environment.
- ✓ Plant, vehicles and machinery will not be refuelled on the foreshore.
- ✓ Coatings and treatments will be suitable for use in the marine environment and are used in accordance with best environmental practice.
- ✓ All equipment, materials, machinery and PPE used will be in a clean condition prior to their arrival on site, and upon removal from site, to minimise risk of introducing non-native species into the marine environment.
- ✓ In the event of removal of any sensitive species or habitat designated by NRW under Schedule 7 of the Environment (Wales) Act 2016, no further removals will occur at that location or within 20m of that location.

Please list your bespoke mitigations here:

- ✓ Location of spill kits shown on **Error! Reference source not found..**
- ✓ All plant to be checked for oil leaks before use.
- ✓ Trained and competent personnel and supervision will be employed.
- ✓ All refuelling to be carried out at a designated point, sited at least 10m away from any watercourse.
- ✓ All plant will run on biodegradable hydraulic oils, and the biodegradable chainsaw chain bar lubricant will be used.
- ✓ Emergency response clean up contractor on standby – Breinar Howells 01202 653558.

5. additional Information

Please list any additional information that may help with the application:

- *Consents/permissions required*
- *List of plans or drawings attached to method statement*
- *Emergency procedures*
- *Contact details*