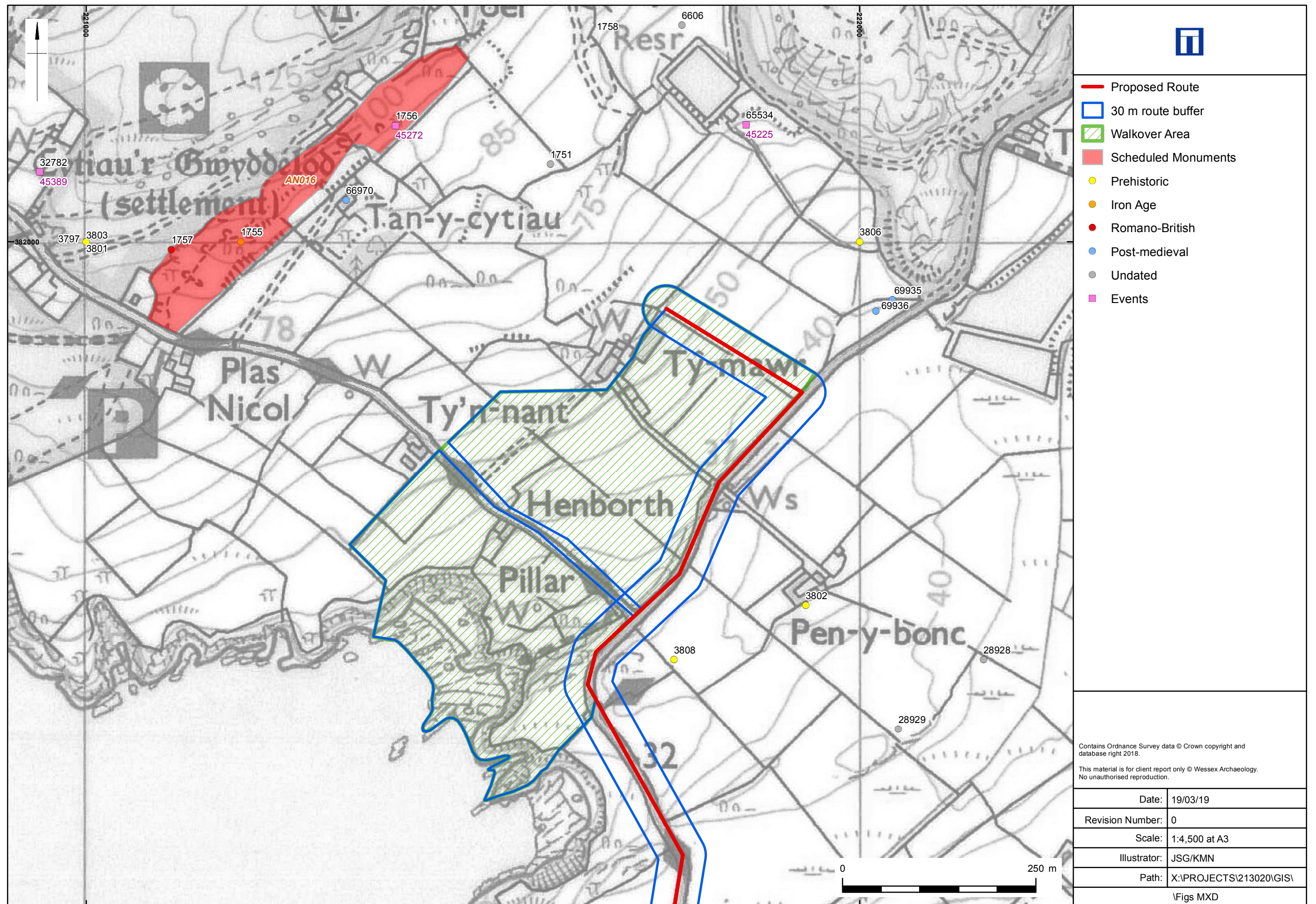
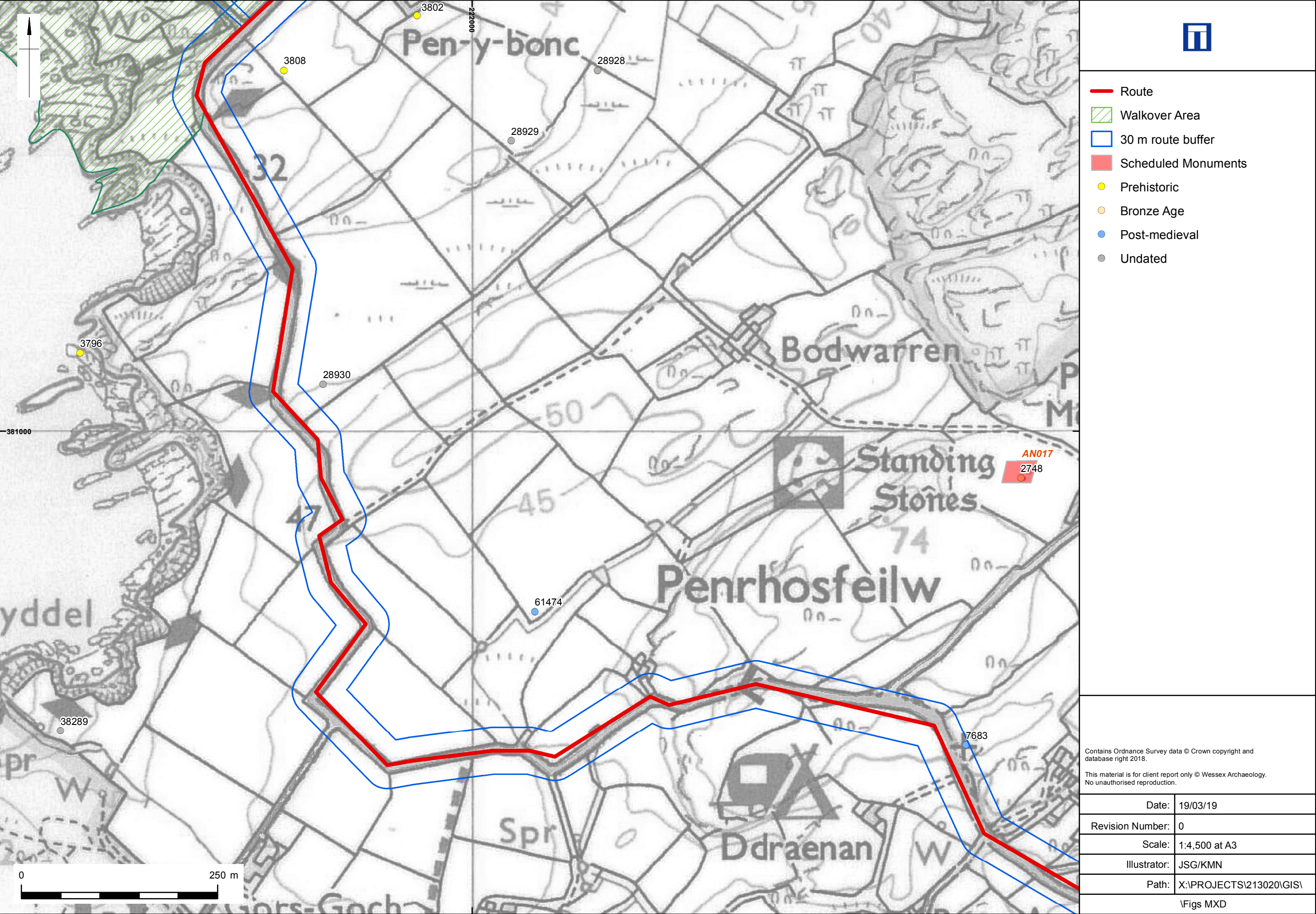


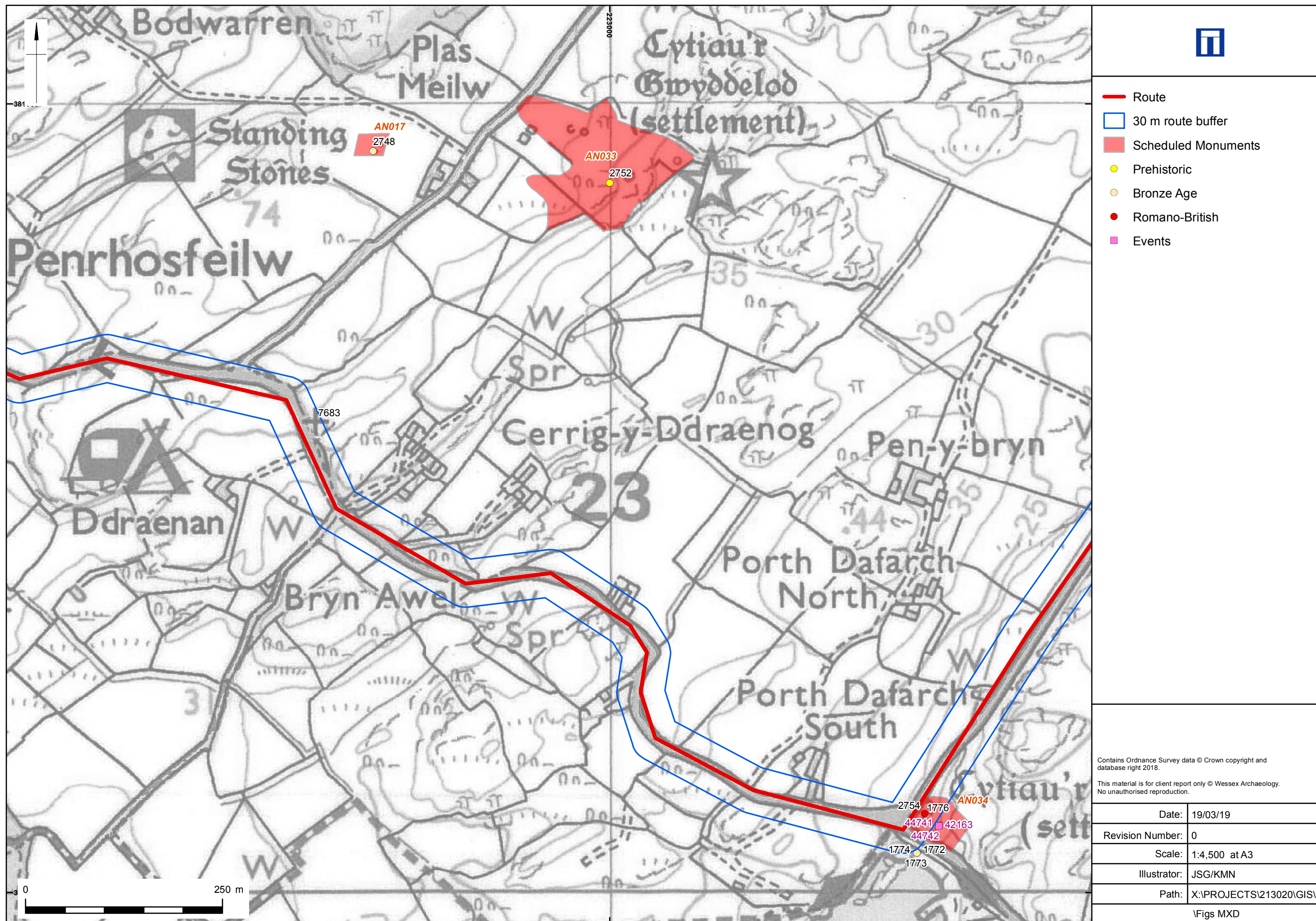
Route of Cable Run from Landfall to Aluminium Works with 30m Buffer and Designated Heritage Assets





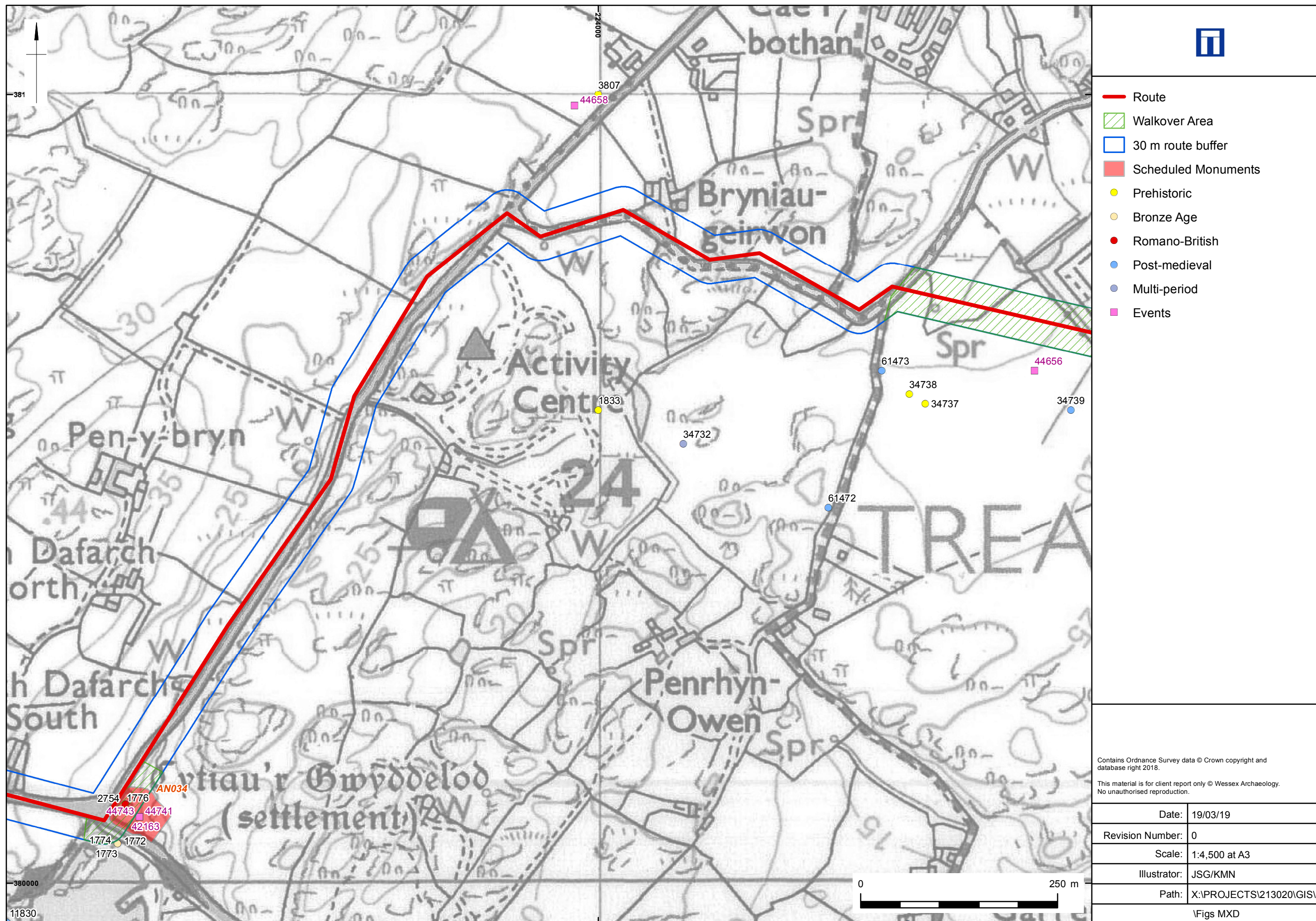
Designated and non-designated heritage assets – cable route between landfall site and Penrhosfeilw

Figure 3



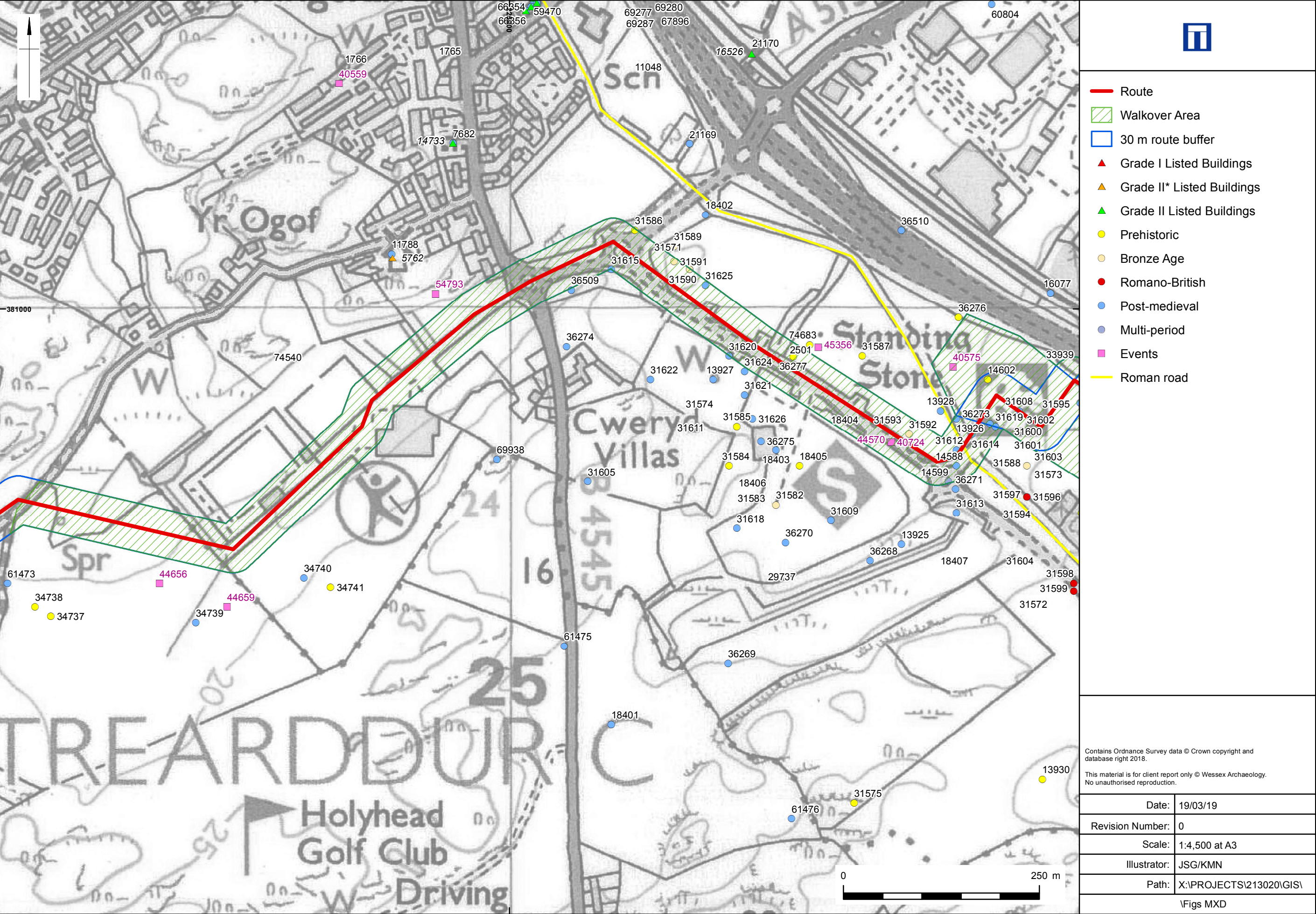
Designated and non-designated heritage assets – cable route between Penrhosfeilw and Porth Dafarch

Figure 4



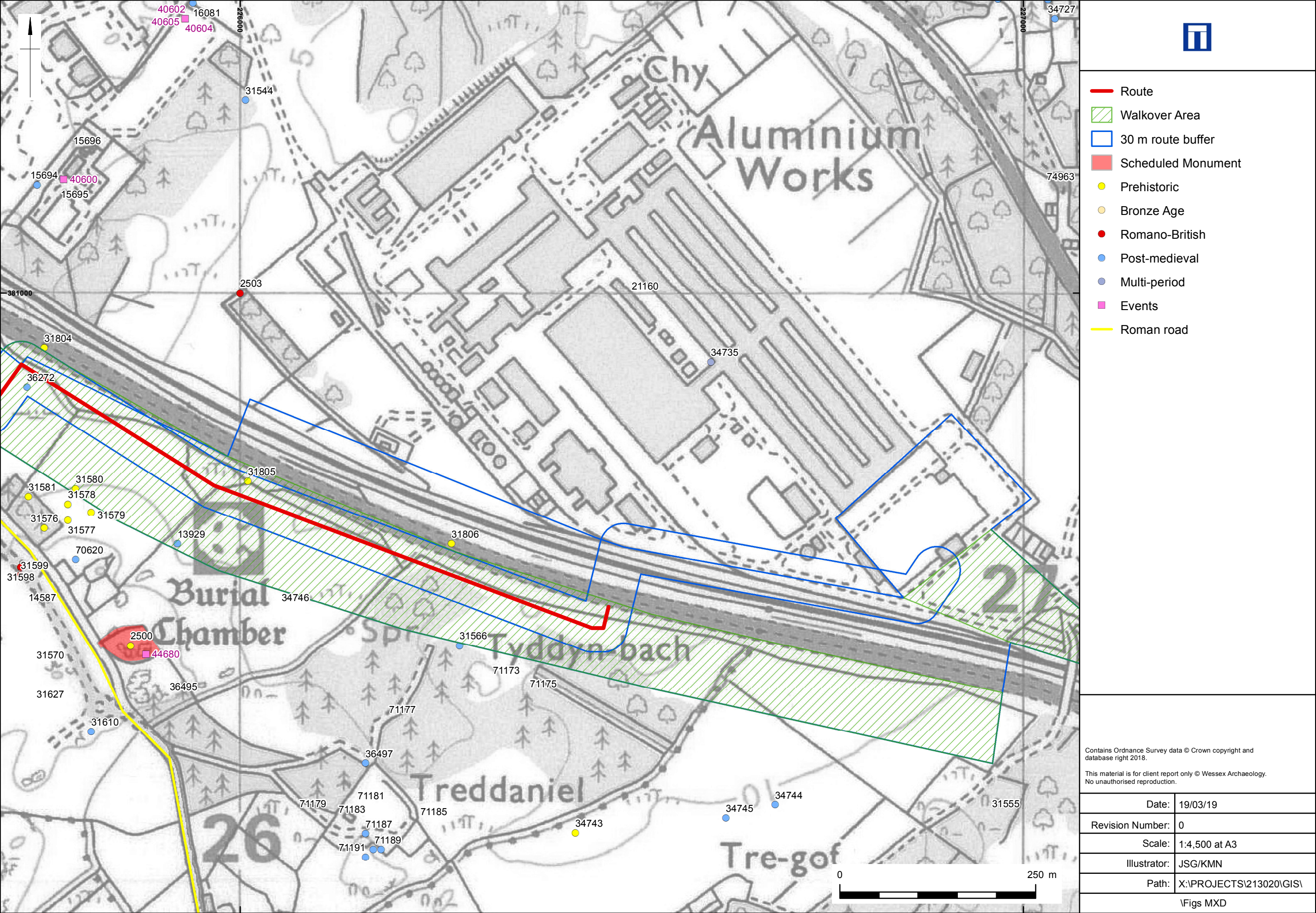
Designated and non-designated heritage assets – cable route from Porth Dafarch to SW of Holyhead Leisure Centre

Figure 5



Designated and non-designated heritage assets – cable route from Holyhead Leisure Centre to western end of Parc Cybi


Figure 6



Designated and non-designated heritage assets – eastern end of cable run

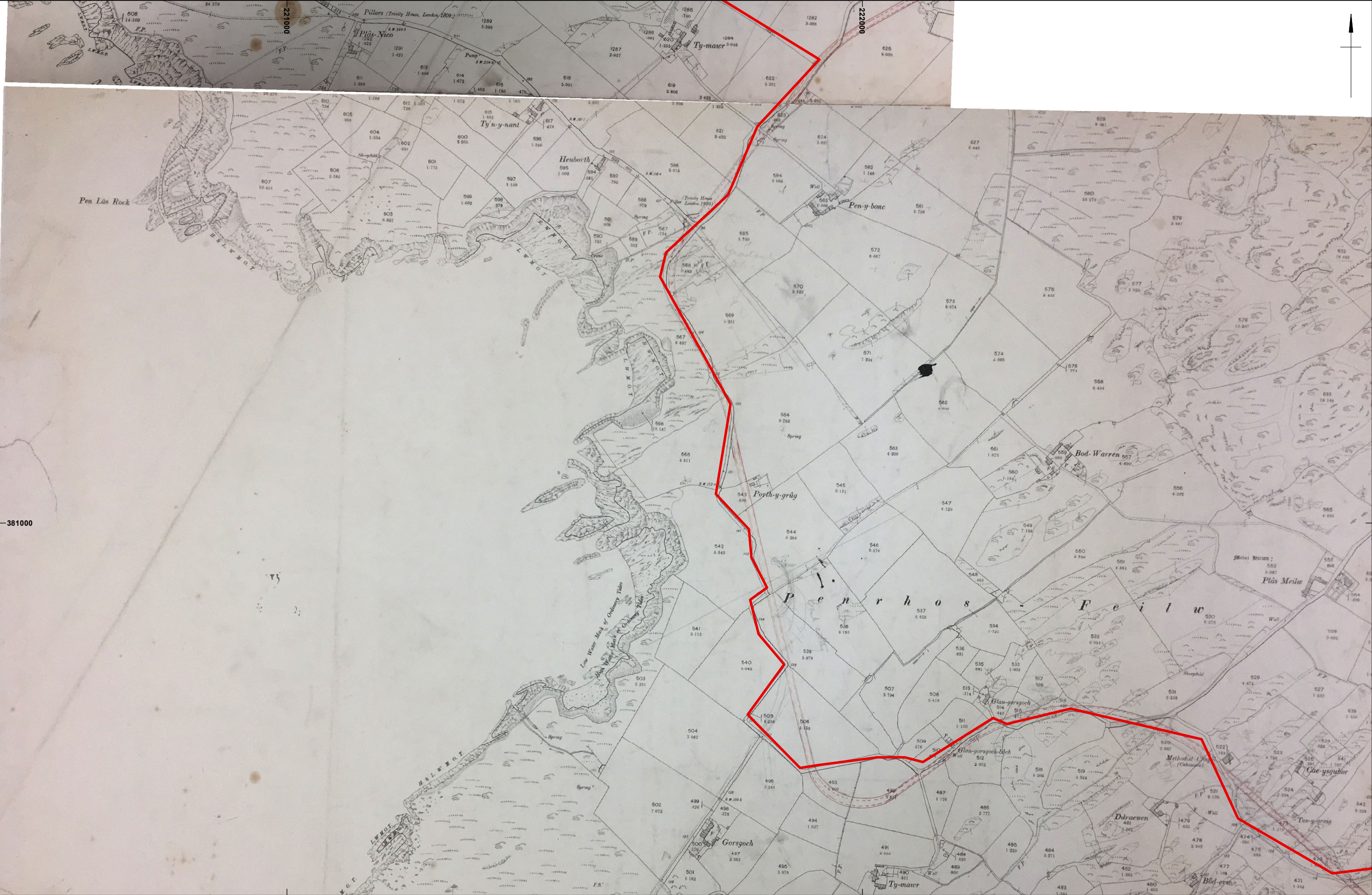
Figure 7





	This material is for client report only © Wessex Archaeology. No unauthorised reproduction.		Date:	28/02/2020	Revision Number:	0
	Contains Ordnance Survey data © Crown copyright and database right 2020.		Scale:	1:3,500	Illustrator:	Johanna_G
			Path:	X:\PROJECTS\213020\GIS\Figs MXD\		

1841 Parish of Holyhead Tithe map (scale 1:5,500)

Figure 8





	 Cable Route	This material is for client report only © Wessex Archaeology. No unauthorised reproduction. Contains Ordnance Survey data © Crown copyright and database right 2020.		Date:	27/02/2020	Revision Number:	0
				Scale:	1:6,400	Illustrator:	Johanna_G
				Path:	X:\PROJECTS\213020\GIS\Figs MXD\		

1900 Second Edition Ordnance Survey map- illustrates the altered road alignment (scale 1:18,000)

Figure 9



	 Cable Route	This material is for client report only © Wessex Archaeology. No unauthorised reproduction. Contains Ordnance Survey data © Crown copyright and database right 2020.		Date:	28/02/2020	Revision Number:	0
				Scale:	1:6,010	Illustrator:	Johanna_G
				Path:	X:\PROJECTS\213020\GIS\Figs MXD\		

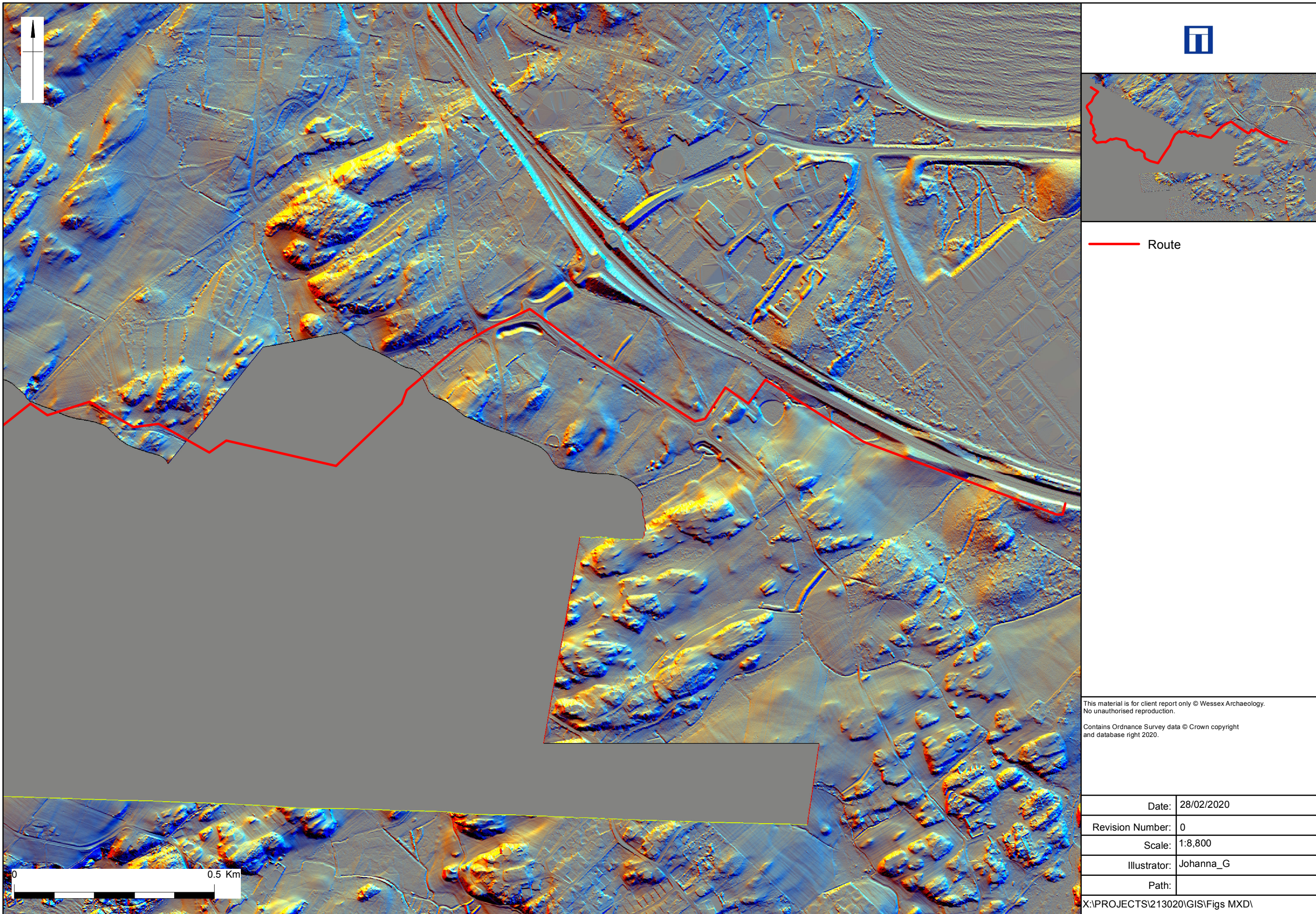
1900 Second Edition Ordnance Survey map- demonstrates the proximity of the modern road to the Scheduled Monument (scale 1:19,000) Figure 10



	 Cable Route	This material is for client report only © Wessex Archaeology. No unauthorised reproduction. Contains Ordnance Survey data © Crown copyright and database right 2020.		Date:	27/02/2020	Revision Number:	0
				Scale:	1:3,000	Illustrator:	Johanna_G
				Path:	X:\PROJECTS\213020\GIS\Figs MXD\		

1889 First Edition Ordnance Survey map- illustrates the landscape prior to the construction of the A 55 (scale 1:14,000)

Figure 11



Lidar data displayed with multidirectional hillshade and at 1m resolution. Copyright Environment Agency 2019