

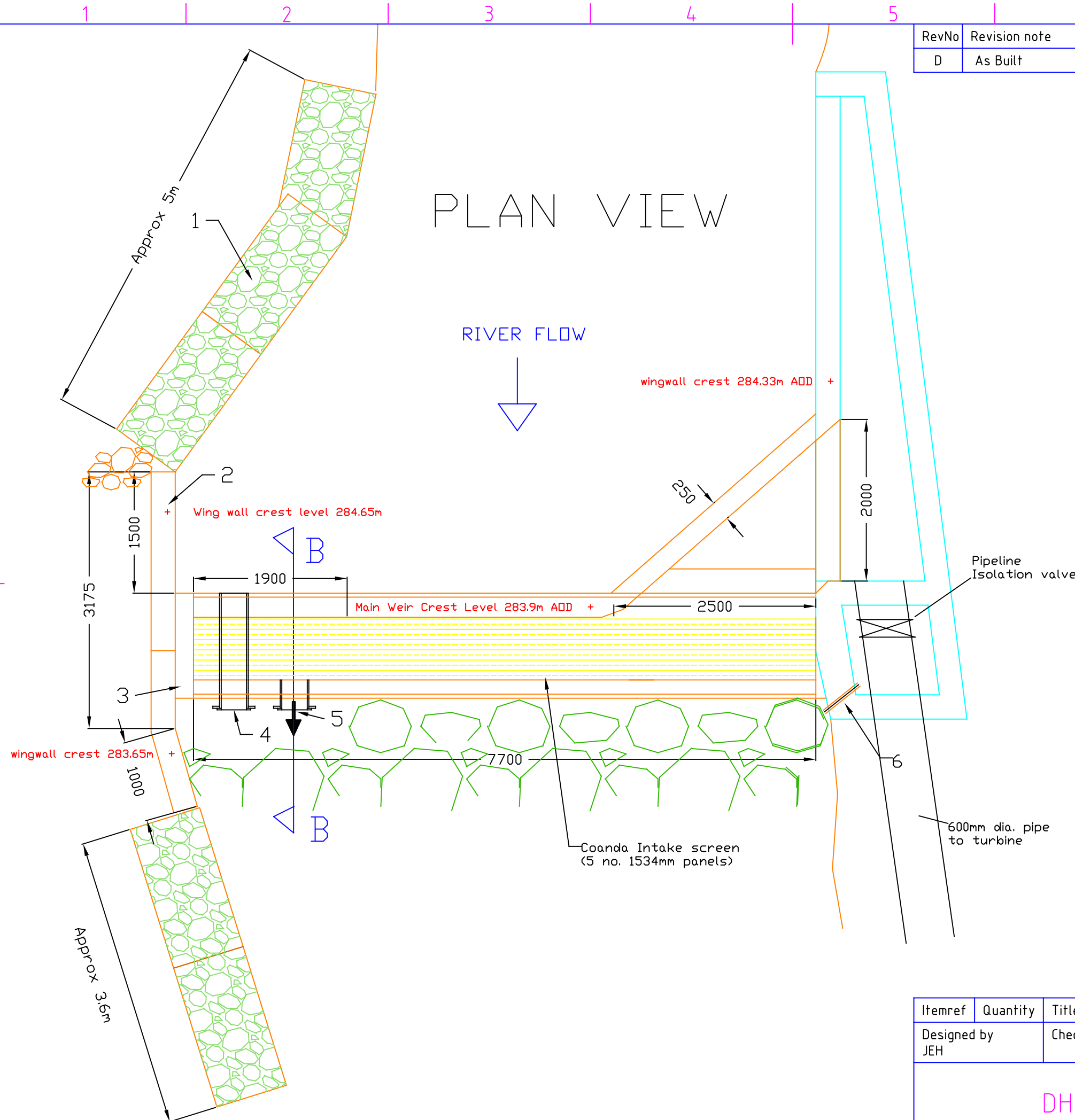
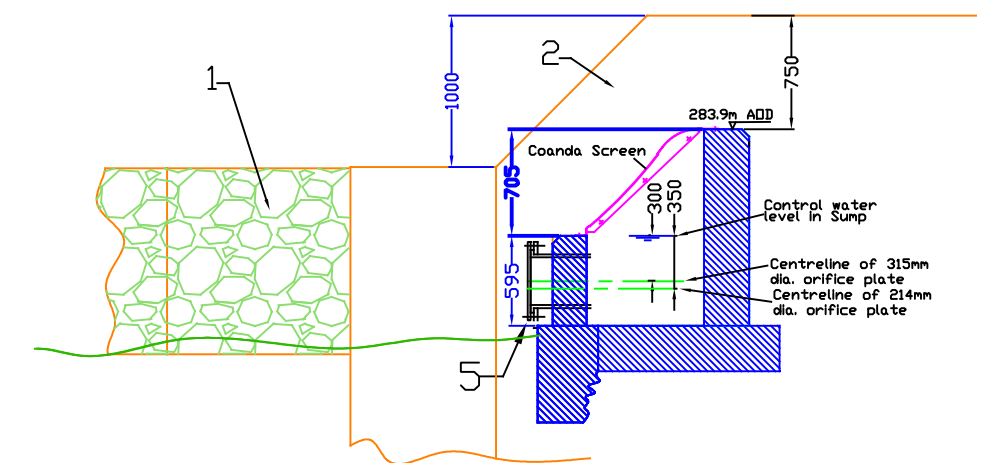
| RevNo | Revision note | Date      | Signature | Checked |
|-------|---------------|-----------|-----------|---------|
| D     | As Built      | 13 OCT 03 | MP        |         |

DRAWING KEY

1. Stone filled Gabions.
2. Weir wing wall, 300mm thick, to a height of 750mm above the new weir level (reduced height downstream as shown). All exposed surfaces stone faced in style of existing weir.
3. 225mm wide shelf to facilitate stone cladding.
4.  $\phi 355$ mm angled MDPE bypass flow pipe to allow draindown of weir pool. Downstream end blanked off with stainless plate.
5.  $\phi 355$ mm MDPE compensation pipe from sump chamber, with flange to take orifice plates. 2 no. interchangeable orifice plates available with  $\phi 214$  and  $\phi 315$  orifices to provide 60 and 120 l/s respectively.
6.  $\phi 50$ mm drain hole from existing valve chamber.

## FINAL DRAWING AS BUILT

## Section B-B



|                    |          |  |                           |                          |                       |                     |
|--------------------|----------|--|---------------------------|--------------------------|-----------------------|---------------------|
| Itemref            | Quantity | Title/Name, designation, material, dimension etc |                           |                          | Article No./Reference |                     |
| Designed by<br>JEH |          | Checked by                                       | Approved by - date        | File name<br>H2505-IN1-E | Date<br>3 Feb 2020    | Scale<br>1:50 at A3 |
| DHG                |          |  | Iwrch Weir Plan & Section |                          |                       |                     |
|                    |          |  | H2505-C02                 |                          |                       | Edition<br>E        |