



Site Investigation & Laboratory Services

Site	PARRYS QUARRY, SOURCE 1 - CELL 1	Contract No.	C5915
Client	White Rock Geo-environmental Limited	Hole ID	
Engineer		Sample	P4/L2/20P
		Depth (m)	C

Non Engineering Description: Reddish brown sandy very gravelly CLAY. Gravel is fine to coarse.

Sample Details:	Initial:	Final:
Diameter:	100.0 mm	99.0 mm
Height:	132.1 mm	130.8 mm
Moisture content:	13 %	13 %
Bulk density:	2.23 Mg/m ³	2.29 Mg/m ³
Dry density:	1.97 Mg/m ³	2.04 Mg/m ³
Sample condition:	Undisturbed	

Saturation Stage:

Initial pore pressure coefficient, B:	0.65
Final pore pressure coefficient, B:	0.99
Duration of stage:	6 days

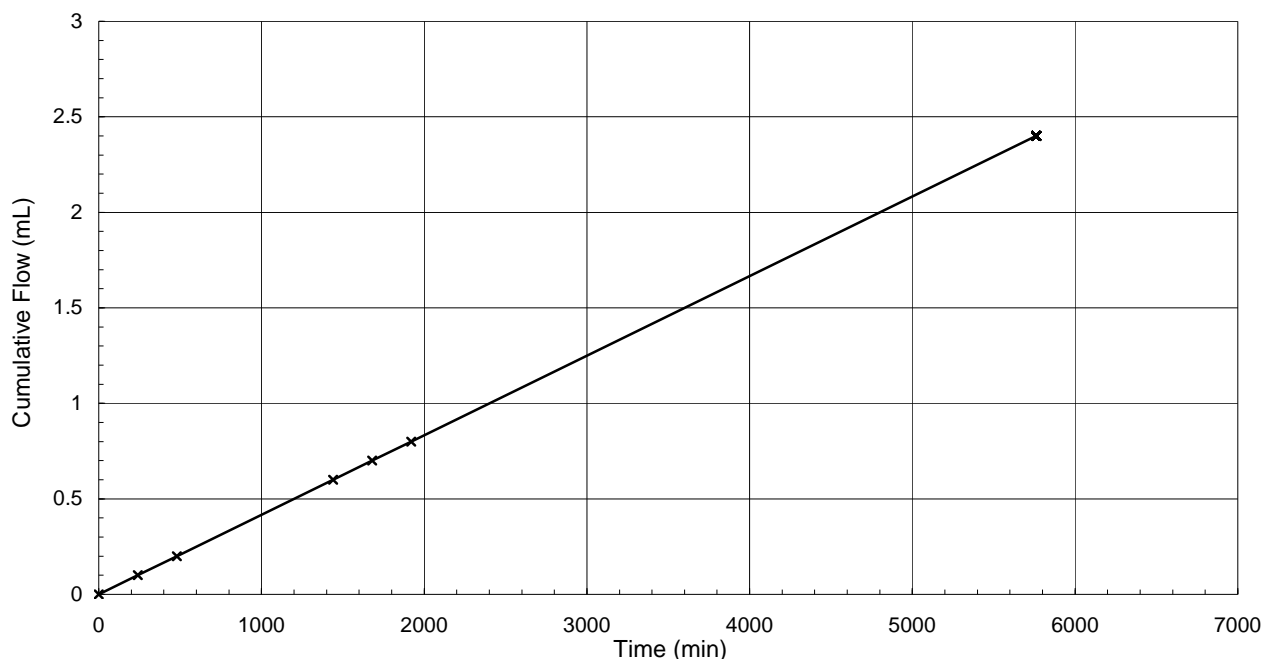
Consolidation stage:

Effective pressure:	200 kPa
Duration of stage:	4 days

Permeability stage:

Pressure difference across specimen:	20 kPa
Mean effective stress:	200 kPa
Duration of stage:	2 days

Coefficient of permeability at 20°C, $K_v: 5.6 \times 10^{-11}$ m/s



Originator	Checked & Approved	PERMEABILITY IN A TRIAXIAL CELL BS1377 : Part 6 : Clause 6 : 1990 Permeability under constant head conditions in a triaxial cell	
CL	 24/01/2017		