

## **CSL20004 – Filters ex Aberthaw**

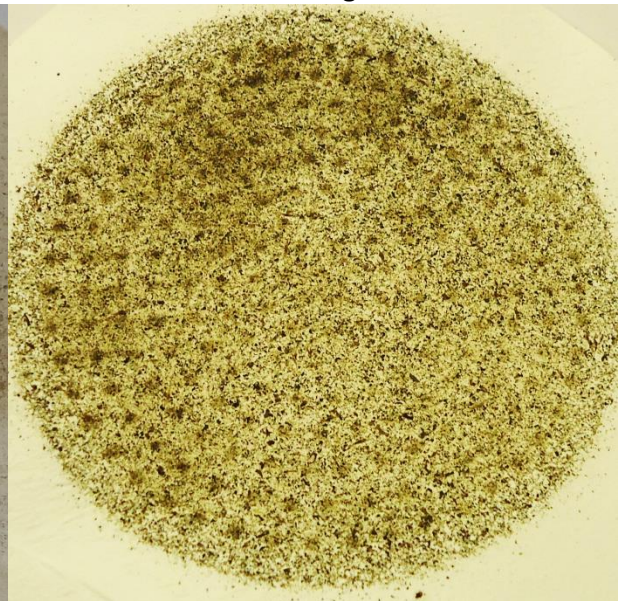
<b>CSL ID</b>	<b>Sample Description</b>	<b>Date Sampled</b>	<b>Date Received</b>
<b>20-084</b>	Quarry North Filter	Dec-19	22/01/2020
<b>20-085</b>	East Aberthaw Sidings Filter	Dec-19	22/01/2020

### **Filter papers as received**

**20-084 Quarry North**



**20-085 East Aberthaw Sidings**



### **Inspection using light microscope**

The filter papers were inspected using a light microscope at different levels of magnification.

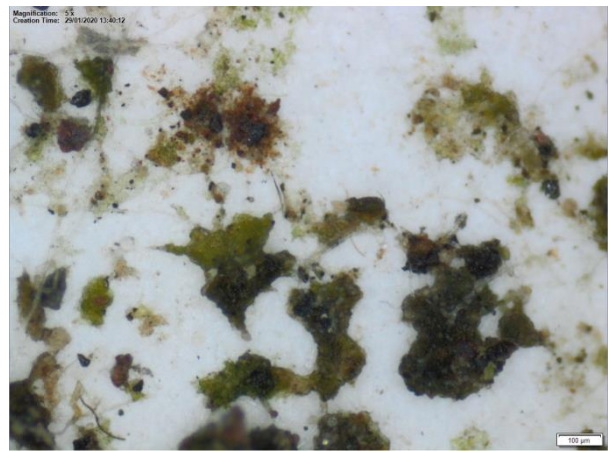
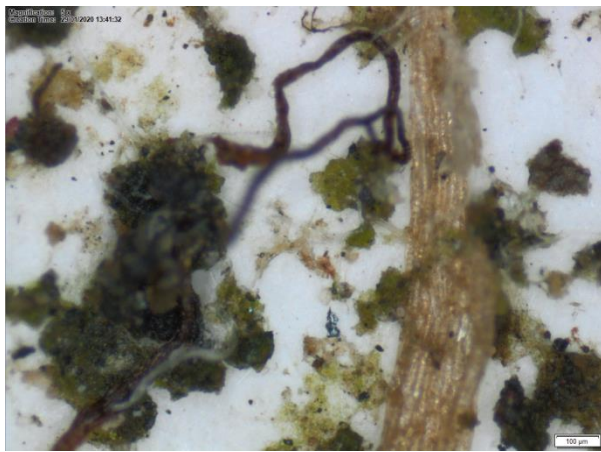
## 20-084 Quarry North

The majority of deposition appeared to be grainy sand coloured material, with some fibres and green plant like material present. Very few cenospheres were observed on the filter papers when inspected with the light microscope.



## 20-085 East Aberthaw Sidings Nov-19

A significant amount of fibres and dark brown/green coloured plaques could be seen on the filter paper. Virtually no cenospheres were observed on the filter paper when inspected with the light microscope.



## **Conclusion**

### **20-084 Quarry North**

Visual observation of Quarry North filter from December suggests it has a thick sandy brown deposition, with similar appearance to those inspected from October and November 2019.

Microscopic examination of the filter ex Quarry North suggests that the deposition is predominantly dirt/dust and plant matter. Very few cenospheres were observed on the filter paper. Appearance of December's filter is consistent with the majority of previous filters analysed ex Quarry North and indicates the majority of residual material is possibly sand/dust.

### **20-085 East Aberthaw Sidings**

Visual appearance of the filter ex East Aberthaw Sidings indicated the material present was similar to that seen on the filter ex November 2019 (20-005).

Microscopic analysis of the filter paper ex East Aberthaw Sidings suggests the presence of a large number of fibres and plant matter. Virtually no cenospheres were observed on this filter paper.

Deposition on this filter paper appears similar to that seen previously on filter papers ex East Aberthaw Sidings.