



Unit 7-8 Hawarden Business Park  
Manor Road (off Manor Lane)  
Hawarden  
Deeside  
CH5 3US

Tel: (01244) 528700

Fax: (01244) 528701

email: hawardencustomerservices@alsglobal.com

Website: www.alsenvironmental.co.uk

Newport City Council  
Civic Centre  
Newport  
NP20 4UR

**Attention:** Luke Embrey

## CERTIFICATE OF ANALYSIS

**Date of report Generation:** 03 July 2020  
**Customer:** Newport City Council  
**Sample Delivery Group (SDG):** 200627-33  
**Your Reference:** June 2020 leachate samples  
**Location:** Newport landfill site  
**Report No:** 557738

We received 4 samples on Saturday June 27, 2020 and 4 of these samples were scheduled for analysis which was completed on Friday July 03, 2020. Accredited laboratory tests are defined within the report, but opinions, interpretations and on-site data expressed herein are outside the scope of ISO 17025 accreditation.

Should this report require incorporation into client reports, it must be used in its entirety and not simply with the data sections alone.

Chemical testing (unless subcontracted) performed at ALS Environmental Hawarden (Method codes TM) or ALS Environmental Aberdeen (Method codes S).

All sample data is provided by the customer. The reported results relate to the sample supplied, and on the basis that this data is correct.

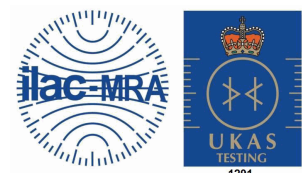
Incorrect sampling dates and/or sample information will affect the validity of results.

The customer is not permitted to reproduce this report except in full without the approval of the laboratory.

Approved By:

**Sonia McWhan**

Operations Manager





# CERTIFICATE OF ANALYSIS

Validated

<b>SDG:</b> 200627-33	<b>Client Reference:</b> June 2020 leachate sampl	<b>Report Number:</b> 557738
<b>Location:</b> Newport landfill site	<b>Order Number:</b> 700152585	<b>Superseded Report:</b>

## Received Sample Overview

Lab Sample No(s)	Customer Sample Ref.	AGS Ref.	Depth (m)	Sampled Date
22384985	C2B		0.00 - 0.00	25/06/2020
22384830	C3B		0.00 - 0.00	25/06/2020
22384896	C4B		0.00 - 0.00	25/06/2020
22384950	LF08_07		0.00 - 0.00	25/06/2020

**Maximum Sample/Coolbox Temperature (°C) : 19.6**

**ISO5667-3 Water quality - Sampling - Part3 -**

During Transportation samples shall be stored in a cooling device capable of maintaining a temperature of (5±3)°C.

ALS have data which show that a cool box with 4 frozen icepacks is capable of maintaining pre-chilled samples at a temperature of (5±3)°C for a period of up to 24hrs.

**Only received samples which have had analysis scheduled will be shown on the following pages.**



# CERTIFICATE OF ANALYSIS

Validated

<b>SDG:</b>	200627-33	<b>Client Reference:</b>	June 2020 leachate sampl	<b>Report Number:</b>	557738
<b>Location:</b>	Newport landfill site	<b>Order Number:</b>	700152585	<b>Superseded Report:</b>	

<b>Results Legend</b>  <div style="display: flex; flex-direction: column; gap: 5px;"> <div style="display: flex; align-items: center;"><span style="background-color: yellow; border: 1px solid black; width: 15px; height: 15px; margin-right: 5px;"></span> Test</div> <div style="display: flex; align-items: center;"><span style="background-color: red; color: white; border: 1px solid black; width: 15px; height: 15px; margin-right: 5px;"></span> No Determination Possible</div> </div> Sample Types - S - Soil/Solid UNS - Unspecified Solid GW - Ground Water SW - Surface Water LE - Land Leachate PL - Prepared Leachate PR - Process Water SA - Saline Water TE - Trade Effluent TS - Treated Sewage US - Untreated Sewage RE - Recreational Water DW - Drinking Water Non-regulatory UNL - Unspecified Liquid SL - Sludge G - Gas OTH - Other	Lab Sample No(s)	Customer Sample Reference	AGS Reference	Depth (m)	Container	Sample Type	
		22384985	C2B		0.00 - 0.00	H2SO4 (ALE244)	LE
		22384830	C3B		0.00 - 0.00	500ml Plastic (ALE208)	LE
		22384896	C4B		0.00 - 0.00	250ml BOD (ALE212)	LE
						0.5l glass bottle (ALE227)	LE
						ZnAc (ALE246)	LE
						Vial (ALE297)	LE
					NaOH (ALE245)	LE	
					HNO3 Filtered (ALE204)	LE	
					H2SO4 (ALE244)	LE	
					500ml Plastic (ALE208)	LE	
					250ml BOD (ALE212)	LE	
					0.5l glass bottle (ALE227)	LE	
					ZnAc (ALE246)	LE	
					Vial (ALE297)	LE	
					NaOH (ALE245)	LE	
					HNO3 Filtered (ALE204)	LE	
					H2SO4 (ALE244)	LE	
					500ml Plastic (ALE208)	LE	
					250ml BOD (ALE212)	LE	
					0.5l glass bottle (ALE227)	LE	
					ZnAc (ALE246)	LE	
					Vial (ALE297)	LE	
					NaOH (ALE245)	LE	
					HNO3 Filtered (ALE204)	LE	
					H2SO4 (ALE244)	LE	
					500ml Plastic (ALE208)	LE	
					250ml BOD (ALE212)	LE	
					0.5l glass bottle (ALE227)	LE	
					ZnAc (ALE246)	LE	
					Vial (ALE297)	LE	
					NaOH (ALE245)	LE	
					HNO3 Filtered (ALE204)	LE	
					H2SO4 (ALE244)	LE	
					500ml Plastic (ALE208)	LE	
					250ml BOD (ALE212)	LE	
					0.5l glass bottle (ALE227)	LE	
					ZnAc (ALE246)	LE	
					Vial (ALE297)	LE	
					NaOH (ALE245)	LE	
					HNO3 Filtered (ALE204)	LE	
					H2SO4 (ALE244)	LE	
					500ml Plastic (ALE208)	LE	
					250ml BOD (ALE212)	LE	
					0.5l glass bottle (ALE227)	LE	
					ZnAc (ALE246)	LE	
					Vial (ALE297)	LE	
					NaOH (ALE245)	LE	
					HNO3 Filtered (ALE204)	LE	
					H2SO4 (ALE244)	LE	
					500ml Plastic (ALE208)	LE	
					250ml BOD (ALE212)	LE	
					0.5l glass bottle (ALE227)	LE	
					ZnAc (ALE246)	LE	
					Vial (ALE297)	LE	
					NaOH (ALE245)	LE	
					HNO3 Filtered (ALE204)	LE	
					H2SO4 (ALE244)	LE	
					500ml Plastic (ALE208)	LE	
					250ml BOD (ALE212)	LE	
					0.5l glass bottle (ALE227)	LE	
					ZnAc (ALE246)	LE	
					Vial (ALE297)	LE	
					NaOH (ALE245)	LE	
					HNO3 Filtered (ALE204)	LE	
					H2SO4 (ALE244)	LE	
					500ml Plastic (ALE208)	LE	
					250ml BOD (ALE212)	LE	
					0.5l glass bottle (ALE227)	LE	
					ZnAc (ALE246)	LE	
					Vial (ALE297)	LE	
					NaOH (ALE245)	LE	
					HNO3 Filtered (ALE204)	LE	
					H2SO4 (ALE244)	LE	
					500ml Plastic (ALE208)	LE	
					250ml BOD (ALE212)	LE	
					0.5l glass bottle (ALE227)	LE	
					ZnAc (ALE246)	LE	
					Vial (ALE297)	LE	
					NaOH (ALE245)	LE	
					HNO3 Filtered (ALE204)	LE	
					H2SO4 (ALE244)	LE	
					500ml Plastic (ALE208)	LE	
					250ml BOD (ALE212)	LE	
					0.5l glass bottle (ALE227)	LE	
					ZnAc (ALE246)	LE	
					Vial (ALE297)	LE	
					NaOH (ALE245)	LE	
					HNO3 Filtered (ALE204)	LE	
					H2SO4 (ALE244)	LE	
					500ml Plastic (ALE208)	LE	
					250ml BOD (ALE212)	LE	
					0.5l glass bottle (ALE227)	LE	
					ZnAc (ALE246)	LE	
					Vial (ALE297)	LE	
					NaOH (ALE245)	LE	
					HNO3 Filtered (ALE204)	LE	
					H2SO4 (ALE244)	LE	
					500ml Plastic (ALE208)	LE	
					250ml BOD (ALE212)	LE	
					0.5l glass bottle (ALE227)	LE	
					ZnAc (ALE246)	LE	
					Vial (ALE297)	LE	
					NaOH (ALE245)	LE	
					HNO3 Filtered (ALE204)	LE	
					H2SO4 (ALE244)	LE	
					500ml Plastic (ALE208)	LE	
					250ml BOD (ALE212)	LE	
					0.5l glass bottle (ALE227)	LE	
					ZnAc (ALE246)	LE	
					Vial (ALE297)	LE	
					NaOH (ALE245)	LE	
					HNO3 Filtered (ALE204)	LE	
					H2SO4 (ALE244)	LE	
					500ml Plastic (ALE208)	LE	
					250ml BOD (ALE212)	LE	
					0.5l glass bottle (ALE227)	LE	
					ZnAc (ALE246)	LE	
					Vial (ALE297)	LE	
					NaOH (ALE245)	LE	
					HNO3 Filtered (ALE204)	LE	
					H2SO4 (ALE244)	LE	
					500ml Plastic (ALE208)	LE	
					250ml BOD (ALE212)	LE	
					0.5l glass bottle (ALE227)	LE	
					ZnAc (ALE246)	LE	
					Vial (ALE297)	LE	
					NaOH (ALE245)	LE	
					HNO3 Filtered (ALE204)	LE	
					H2SO4 (ALE244)	LE	
					500ml Plastic (ALE208)	LE	
					250ml BOD (ALE212)	LE	
					0.5l glass bottle (ALE227)	LE	
					ZnAc (ALE246)	LE	
					Vial (ALE297)	LE	
					NaOH (ALE245)	LE	
					HNO3 Filtered (ALE204)	LE	
					H2SO4 (ALE244)	LE	
					500ml Plastic (ALE208)	LE	
					250ml BOD (ALE212)	LE	
					0.5l glass bottle (ALE227)	LE	
					ZnAc (ALE246)	LE	
					Vial (ALE297)	LE	
					NaOH (ALE245)	LE	
					HNO3 Filtered (ALE204)	LE	
					H2SO4 (ALE244)	LE	
					500ml Plastic (ALE208)	LE	
					250ml BOD (ALE212)	LE	
					0.5l glass bottle (ALE227)	LE	
					ZnAc (ALE246)	LE	
					Vial (ALE297)	LE	
					NaOH (ALE245)	LE	
					HNO3 Filtered (ALE204)	LE	
					H2SO4 (ALE244)	LE	
					500ml Plastic (ALE208)	LE	
					250ml BOD (ALE212)	LE	
					0.5l glass bottle (ALE227)	LE	
					ZnAc (ALE246)	LE	
					Vial (ALE297)	LE	
					NaOH (ALE245)	LE	
					HNO3 Filtered (ALE204)	LE	
					H2SO4 (ALE244)	LE	
					500ml Plastic (ALE208)	LE	
					250ml BOD (ALE212)	LE	
					0.5l glass bottle (ALE227)	LE	
					ZnAc (ALE246)	LE	
					Vial (ALE297)	LE	
					NaOH (ALE245)	LE	
					HNO3 Filtered (ALE204)	LE	
					H2SO4 (ALE244)	LE	
					500ml Plastic (ALE208)	LE	
					250ml BOD (ALE212)	LE	
					0.5l glass bottle (ALE227)	LE	
					ZnAc (ALE246)	LE	
					Vial (ALE297)	LE	
					NaOH (ALE245)	LE	
					HNO3 Filtered (ALE204)	LE	
					H2SO4 (ALE244)	LE	
					500ml Plastic (ALE208)	LE	
					250ml BOD (ALE212)	LE	
					0.5l glass bottle (ALE227)	LE	
					ZnAc (ALE246)	LE	
					Vial (ALE297)	LE	
					NaOH (ALE245)	LE	
					HNO3 Filtered (ALE204)	LE	
					H2SO4 (ALE244)	LE	
					500ml Plastic (ALE208)	LE	
					250ml BOD (ALE212)	LE	
					0.5l glass bottle (ALE227)	LE	
					ZnAc (ALE246)	LE	
					Vial (ALE297)	LE	
					NaOH (ALE245)	LE	
					HNO3 Filtered (ALE204)	LE	
					H2SO4 (ALE244)	LE	
					500ml Plastic (ALE208)	LE	
					250ml BOD (ALE212)	LE	
					0.5l glass bottle (ALE227)	LE	
					ZnAc (ALE246)	LE	
					Vial (ALE297)	LE	
					NaOH (ALE245)	LE	
					HNO3 Filtered (ALE204)	LE	
					H2SO4 (ALE244)	LE	
					500ml Plastic (ALE208)	LE	
					250ml BOD (ALE212)	LE	
					0.5l glass bottle (ALE227)	LE	
					ZnAc (ALE246)	LE	
					Vial (ALE297)	LE	
					NaOH (ALE245)	LE	
					HNO3 Filtered (ALE204)	LE	
					H2SO4 (ALE244)	LE	
					500ml Plastic (ALE208)	LE	
					250ml BOD (ALE212)	LE	
					0.5l glass bottle (ALE227)	LE	
					ZnAc (ALE246)	LE	









# CERTIFICATE OF ANALYSIS

Validated

<b>SDG:</b>	200627-33	<b>Client Reference:</b>	June 2020 leachate sampl	<b>Report Number:</b>	557738
<b>Location:</b>	Newport landfill site	<b>Order Number:</b>	700152585	<b>Superseded Report:</b>	

Results Legend			Customer Sample Ref.	C2B	C3B	C4B	LF08_07		
# ISO17025 accredited. M mCERTS accredited. aq Aqueous / settled sample. diss.filt Dissolved / filtered sample. tot.unfilt Total / unfiltered sample. * Subcontracted - refer to subcontractor report for accreditation status. ** % recovery of the surrogate standard to check the efficiency of the method. The results of individual compounds within samples aren't corrected for the recovery (F) Trigger breach confirmed 1-345@ Sample deviation (see appendix)	Depth (m)	Sample Type	0.00 - 0.00 Land Leachate (LE)	0.00 - 0.00 Land Leachate (LE)	0.00 - 0.00 Land Leachate (LE)	0.00 - 0.00 Land Leachate (LE)			
	Date Sampled	Sampled Time	25/06/2020	25/06/2020	25/06/2020	25/06/2020			
	Date Received	SDG Ref	27/06/2020 200627-33 22384985	27/06/2020 200627-33 22384830	27/06/2020 200627-33 22384896	27/06/2020 200627-33 22384950			
	Lab Sample No.(s)	AGS Reference							
Component	LOD/Units	Method							
Ionic balance	% Diff	Calulation	0.863	4.02	5.96	-2.69			
Alkalinity, Total as CaCO3 (diss.filt)	<2 mg/l	TM043	6400	9000	3120	4910			
Alkalinity, Bicarbonate as CaCO3 (diss.filt)	<2 mg/l	TM043	6400	9000	3120	4910			
BOD, unfiltered	<1 mg/l	TM045	66.4 #	473 #	63.9 #	54 #			
Organic Carbon, Total	<3 mg/l	TM090	445 #	2040 #	274 #	366 #			
Ammoniacal Nitrogen as N	<0.2 mg/l	TM099	1130	1970	348	777			
Sulphide	<0.01 mg/l	TM101	0.324	0.757	0.399	0.212			
COD, unfiltered	<7 mg/l	TM107	1490 #	6940 #	1040 #	1130 #			
Conductivity @ 20 deg.C	<0.02 mS/cm	TM120	14.1 #	20.8 #	10.9 #	10.8 #			
Arsenic (diss.filt)	<0.5 µg/l	TM152	65.4 #	142 #	11.4 #	16.3 #			
Boron (diss.filt)	<10 µg/l	TM152	10700 #	29500 #	10400 #	7290 #			
Cadmium (diss.filt)	<0.08 µg/l	TM152	<0.8 #	<0.8 #	<0.08 #	<0.08 #			
Chromium (diss.filt)	<1 µg/l	TM152	161 #	1110 #	52.5 #	59.1 #			
Copper (diss.filt)	<0.3 µg/l	TM152	<3 #	4.09 #	0.763 #	11.4 #			
Lead (diss.filt)	<0.2 µg/l	TM152	2.43 #	2.81 #	0.212 #	0.445 #			
Manganese (diss.filt)	<3 µg/l	TM152	669 #	303 #	2080 #	591 #			
Nickel (diss.filt)	<0.4 µg/l	TM152	172 #	249 #	88.3 #	114 #			
Selenium (diss.filt)	<1 µg/l	TM152	<10 #	<10 #	<1 #	<1 #			
Zinc (diss.filt)	<1 µg/l	TM152	23.3 #	38.4 #	28.3 #	49.5 #			
Sodium (Dis.Filt)	<0.076 mg/l	TM152	1510 #	2510 #	1650 #	1070 #			
Magnesium (Dis.Filt)	<0.036 mg/l	TM152	211 #	194 #	214 #	132 #			
Potassium (Dis.Filt)	<0.2 mg/l	TM152	556 #	640 #	364 #	383 #			
Calcium (Dis.Filt)	<0.2 mg/l	TM152	122 #	62.9 #	650 #	129 #			
Iron (Dis.Filt)	<0.019 mg/l	TM152	5.41 #	2.07 #	2.21 #	1.23 #			
Hardness, Total as CaCO3	<0.65 mg/l	TM152	1170	956	2690	866			
EPH Range >C10 - C40 (aq)	<100 µg/l	TM172	2450	3050	1670	2480			
Nitrite as NO2	<0.05 mg/l	TM184	<0.05	<0.05	<0.05	<0.05			
Phosphate (Ortho as PO4)	<0.05 mg/l	TM184	16.6	41.5	0.14	9.09			
Sulphate	<2 mg/l	TM184	<20		<2	2			
Chloride	<2 mg/l	TM184	1870		2700	1340			
Nitrate as NO3	<0.3 mg/l	TM184	0.892		<0.3	0.572			
Total Oxidised Nitrogen as N	<0.1 mg/l	TM184	0.174		<0.1	0.126			







# CERTIFICATE OF ANALYSIS

Validated

**SDG:** 200627-33      **Client Reference:** June 2020 leachate sampl      **Report Number:** 557738  
**Location:** Newport landfill site      **Order Number:** 700152585      **Superseded Report:**

## Table of Results - Appendix

Method No	Reference	Description
Calculation		
TM043	Method 2320B, AWWA/APHA, 20th Ed., 1999 / BS 2690: Part109 1984	Determination of alkalinity in aqueous samples
TM045	MEWAM BOD5 2nd Ed.HMSO 1988 / Method 5210B, AWWA/APHA, 20th Ed., 1999; SCA Blue Book 130	Determination of BOD5 (ATU) Filtered by Oxygen Meter on liquids
TM090	Method 5310, AWWA/APHA, 20th Ed., 1999 / Modified: US EPA Method 415.1 & 9060	Determination of Total Organic Carbon/Total Inorganic Carbon in Water and Waste Water
TM099	BS 2690: Part 7:1968 / BS 6068: Part2.11:1984	Determination of Ammonium in Water Samples using the Kone Analyser
TM101	Method 4500B & C, AWWA/APHA, 20th Ed., 1999	Determination of Sulphide in soil and water samples using the Kone Analyser
TM107	ISO 6060-1989	Determination of Chemical Oxygen Demand using COD Dr Lange Kit
TM120	Method 2510B, AWWA/APHA, 20th Ed., 1999 / BS 2690: Part 9:1970	Determination of Electrical Conductivity using a Conductivity Meter
TM152	Method 3125B, AWWA/APHA, 20th Ed., 1999	Analysis of Aqueous Samples by ICP-MS
TM172	Analysis of Petroleum Hydrocarbons in Environmental Media – Total Petroleum Hydrocarbon Criteria	EPH in Waters
TM184	EPA Methods 325.1 & 325.2,	The Determination of Anions in Aqueous Matrices using the Kone Spectrophotometric Analysers
TM208	Modified: US EPA Method 8260b & 624	Determination of Volatile Organic Compounds by Headspace / GC-MS in Waters
TM226	In-House Method	Determination of Anions in Waters using Ion Chromatography
TM227	Standard methods for the examination of waters and wastewaters 20th Edition, AWWA/APHA Method 4500.	Determination of Total Cyanide, Free (Easily Liberatable) Cyanide and Thiocyanate
TM256	The measurement of Electrical Conductivity and the Laboratory determination of pH Value of Natural, Treated and Wastewaters. HMSO, 1978. ISBN 011 751428 4.	Determination of pH in Water and Leachate using the GLpH pH Meter

NA = not applicable.

Chemical testing (unless subcontracted) performed at ALS Environmental Hawarden (Method codes TM) or ALS Environmental Aberdeen (Method codes S).



**CERTIFICATE OF ANALYSIS**

Validated

**SDG:** 200627-33      **Client Reference:** June 2020 leachate sampl      **Report Number:** 557738  
**Location:** Newport landfill site      **Order Number:** 700152585      **Superseded Report:**

**Test Completion Dates**

Lab Sample No(s)	22384985	22384830	22384896	22384950
Customer Sample Ref.	C2B	C3B	C4B	LF08_07
AGS Ref.				
Depth	0.00 - 0.00	0.00 - 0.00	0.00 - 0.00	0.00 - 0.00
Type	Land Leachate	Land Leachate	Land Leachate	Land Leachate

Alkalinity Filtered as CaCO3	02-Jul-2020	02-Jul-2020	02-Jul-2020	02-Jul-2020
Ammoniacal Nitrogen	30-Jun-2020	30-Jun-2020	30-Jun-2020	30-Jun-2020
Anions by ion Chromatography		03-Jul-2020		
Anions by Kone (w)	30-Jun-2020		30-Jun-2020	30-Jun-2020
BOD True Total	03-Jul-2020	03-Jul-2020	03-Jul-2020	03-Jul-2020
COD Unfiltered	30-Jun-2020	30-Jun-2020	30-Jun-2020	30-Jun-2020
Conductivity (at 20 deg.C)	02-Jul-2020	02-Jul-2020	02-Jul-2020	02-Jul-2020
Cyanide Comp/Free/Total/Thiocyanate	01-Jul-2020	01-Jul-2020	01-Jul-2020	01-Jul-2020
Dissolved Metals by ICP-MS	03-Jul-2020	02-Jul-2020	03-Jul-2020	03-Jul-2020
EPH (DRO) (C10-C40) Aqueous (W)	02-Jul-2020	02-Jul-2020	01-Jul-2020	02-Jul-2020
Ionic Balance	03-Jul-2020	03-Jul-2020	03-Jul-2020	03-Jul-2020
Nitrite by Kone (w)	30-Jun-2020	30-Jun-2020	30-Jun-2020	30-Jun-2020
pH Value	30-Jun-2020	30-Jun-2020	30-Jun-2020	30-Jun-2020
Phosphate by Kone (w)	30-Jun-2020	30-Jun-2020	30-Jun-2020	30-Jun-2020
Sulphide	01-Jul-2020	01-Jul-2020	01-Jul-2020	01-Jul-2020
Total Organic and Inorganic Carbon	03-Jul-2020	03-Jul-2020	03-Jul-2020	03-Jul-2020
VOC MS (W)	01-Jul-2020	01-Jul-2020	01-Jul-2020	01-Jul-2020



# CERTIFICATE OF ANALYSIS

Validated

SDG: 200627-33 Client Reference: June 2020 leachate sampl Report Number: 557738  
Location: Newport landfill site Order Number: 700152585 Superseded Report:

## Chromatogram

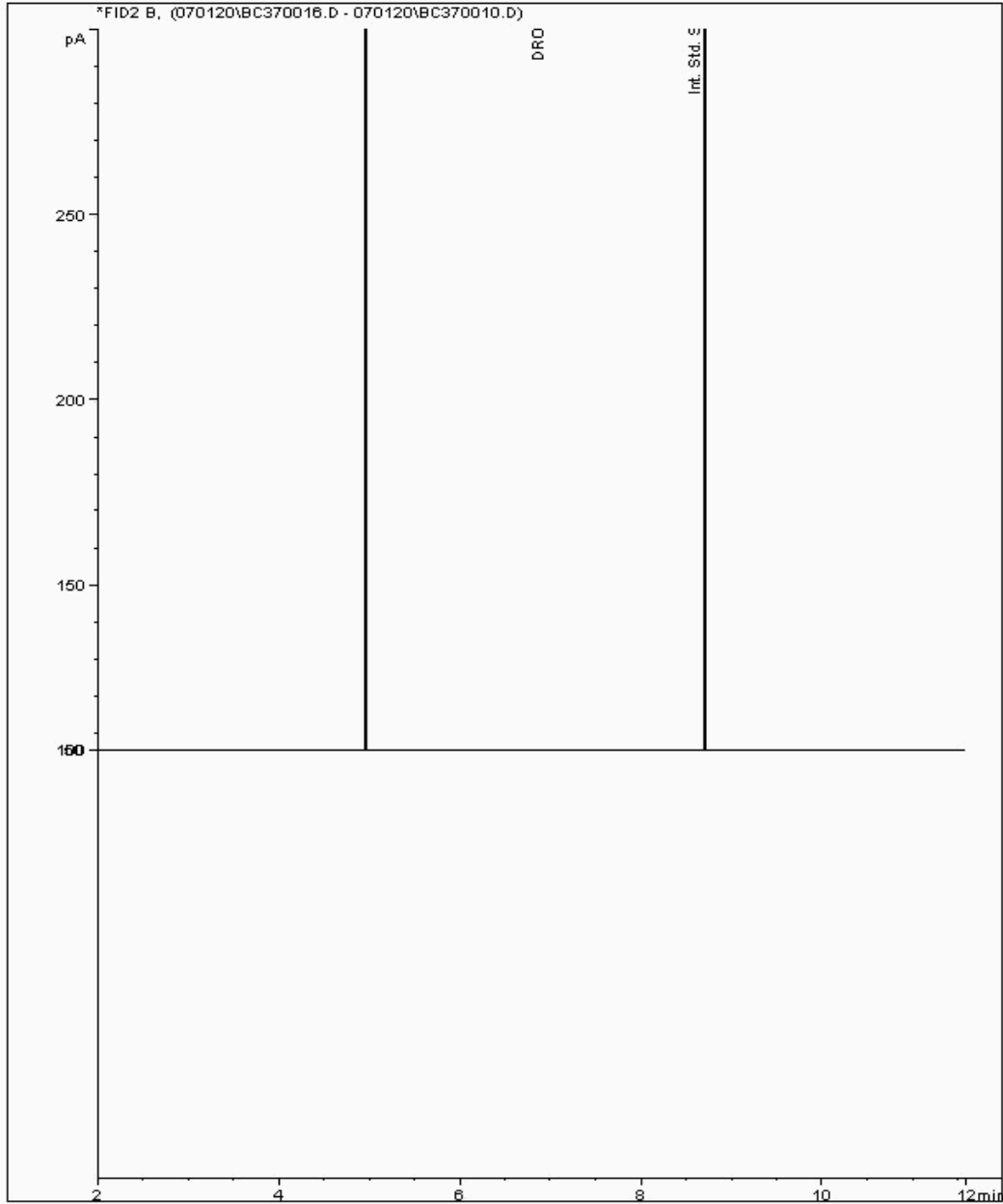
Analysis: EPH (DRO) (C10-C40) Aqueous (W)

Sample No : 22390188  
Sample ID : LF08\_07

Depth : 0.00 - 0.00

EPH Range Organics ( C10 - C40 )

Sample Identity: 21020157-  
Date Acquired : 01/07/2020 20:28:38 PM  
Units : mg/l





# CERTIFICATE OF ANALYSIS

Validated

SDG: 200627-33 Client Reference: June 2020 leachate sampl Report Number: 557738  
Location: Newport landfill site Order Number: 700152585 Superseded Report:

## Chromatogram

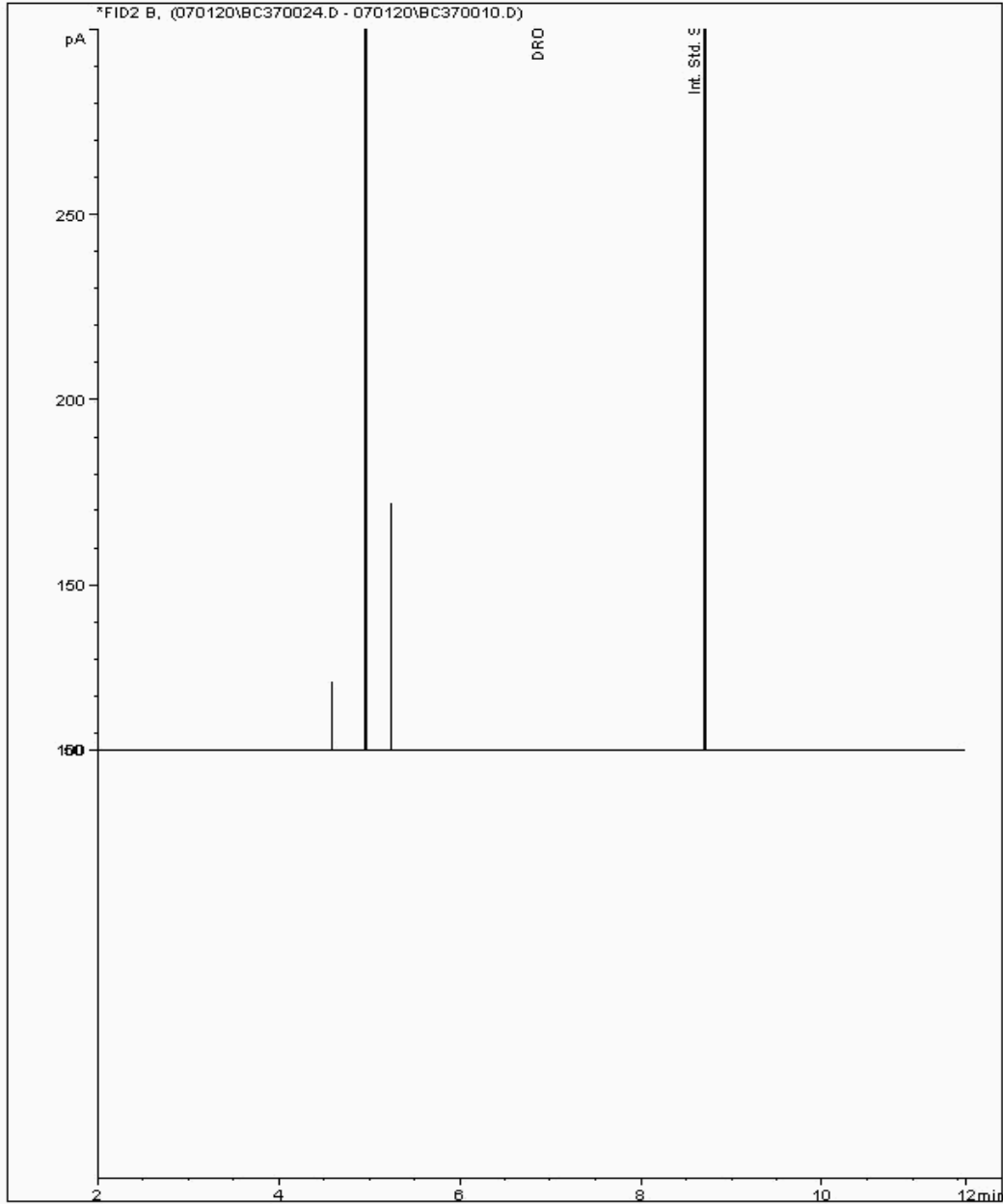
Analysis: EPH (DRO) (C10-C40) Aqueous (W)

Sample No : 22390194  
Sample ID : C2B

Depth : 0.00 - 0.00

EPH Range Organics ( C10 - C40 )

Sample Identity: 21020213-  
Date Acquired : 01/07/2020 23:40:12 PM  
Units : mg/l





# CERTIFICATE OF ANALYSIS

Validated

SDG: 200627-33 Client Reference: June 2020 leachate sampl Report Number: 557738  
Location: Newport landfill site Order Number: 700152585 Superseded Report:

## Chromatogram

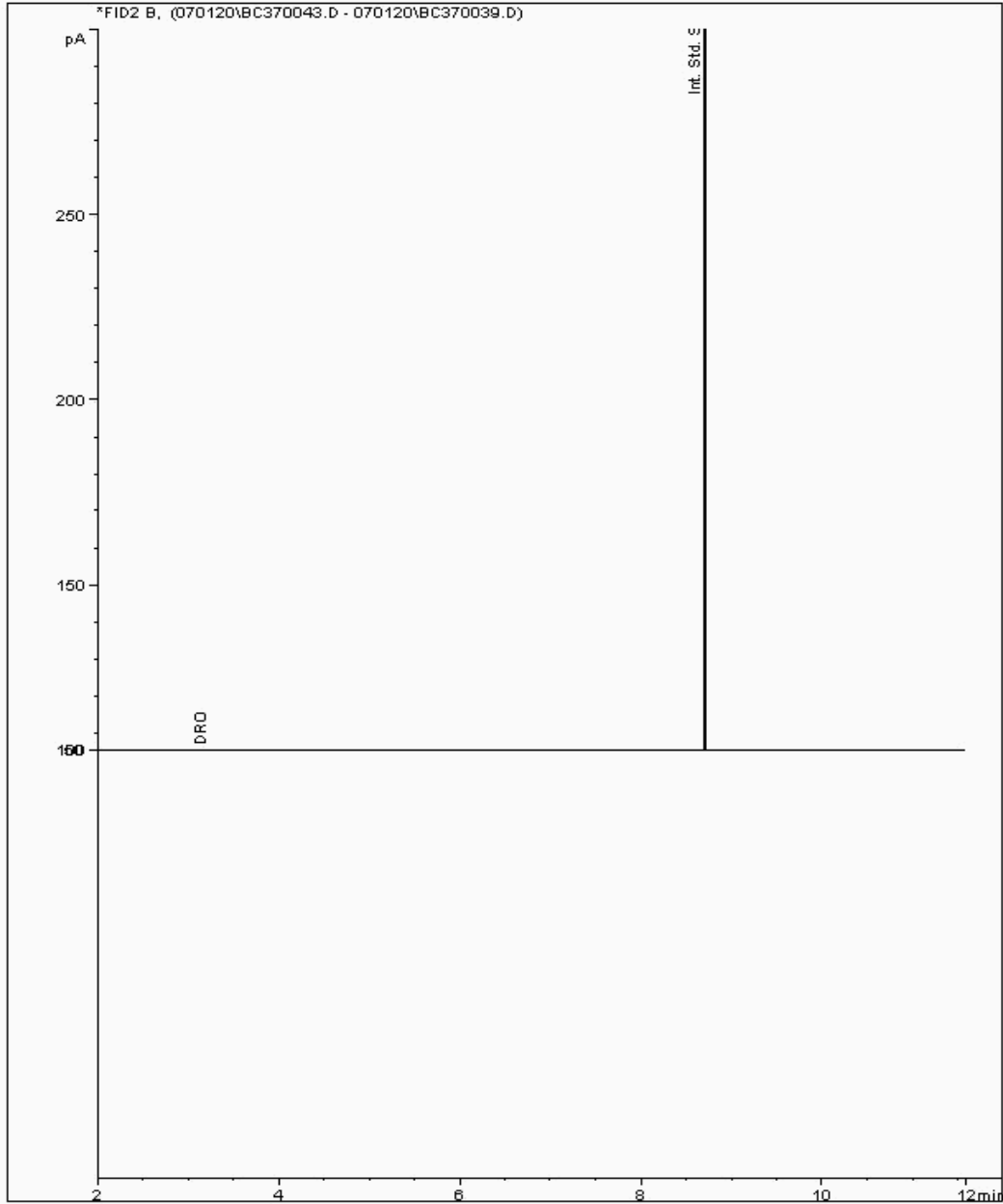
Analysis: EPH (DRO) (C10-C40) Aqueous (W)

Sample No : 22390200  
Sample ID : C3B

Depth : 0.00 - 0.00

EPH Range Organics ( C10 - C40 )

Sample Identity: 21020011-  
Date Acquired : 02/07/2020 09:47:22 PM  
Units : mg/l





# CERTIFICATE OF ANALYSIS

Validated

SDG: 200627-33 Client Reference: June 2020 leachate sampl Report Number: 557738  
Location: Newport landfill site Order Number: 700152585 Superseded Report:

## Chromatogram

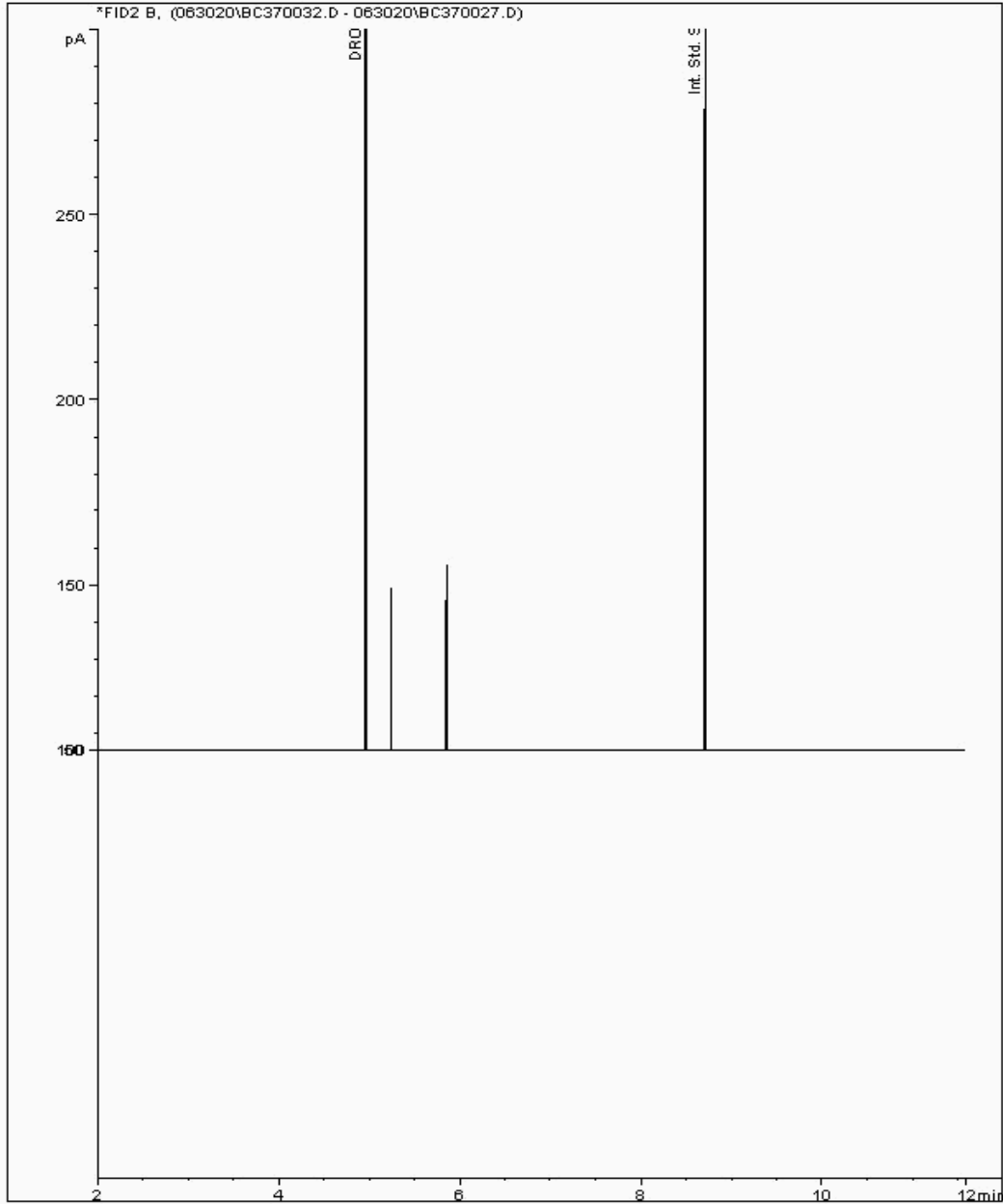
Analysis: EPH (DRO) (C10-C40) Aqueous (W)

Sample No : 22390203  
Sample ID : C4B

Depth : 0.00 - 0.00

EPH Range Organics ( C10 - C40 )

Sample Identity: 21020078-  
Date Acquired : 01/07/2020 02:58:31 PM  
Units : mg/l





# CERTIFICATE OF ANALYSIS

SDG: 200627-33 Client Reference: June 2020 leachate samp Report Number: 557738  
 Location: Newport landfill site Order Number: 700152585 Superseded Report:

## Appendix

## General

1. Results are expressed on a dry weight basis (dried at 35°C) for all soil analyses except for the following: NRA and CEN Leach tests, flash point LOI, pH, ammonium as NH<sub>4</sub> by the BRE method, VOC TICs and SVOC TICs.

2. If sufficient sample is received a sub sample will be retained free of charge for 30 days after analysis is completed (e-mailed) for all sample types unless the sample is destroyed on testing. The prepared soil sub sample that is analysed for asbestos will be retained for a period of 6 months after the analysis date. All bulk samples will be retained for a period of 6 months after the analysis date. All samples received and not scheduled will be disposed of one month after the date of receipt unless we are instructed to the contrary. Once the initial period has expired, a storage charge will be applied for each month or part thereof until the client cancels the request for sample storage. ALS reserve the right to charge for samples received and stored but not analysed.

3. With respect to turnaround, we will always endeavour to meet client requirements wherever possible, but turnaround times cannot be absolutely guaranteed due to so many variables beyond our control.

4. We take responsibility for any test performed by sub-contractors (marked with an asterisk). We endeavour to use UKAS/MCERTS Accredited Laboratories, who either complete a quality questionnaire or are audited by ourselves. For some determinands there are no UKAS/MCERTS Accredited Laboratories, in this instance a laboratory with a known track record will be utilised.

5. If no separate volatile sample is supplied by the client, or if a headspace or sediment is present in the volatile sample, the integrity of the data may be compromised. This will be flagged up as an invalid VOC on the test schedule and the result marked as deviating on the test certificate.

6. NDP - No determination possible due to insufficient/unsuitable sample.

7. Results relate only to the items tested.

8. LoDs (Limit of Detection) for wet tests reported on a dry weight basis are not corrected for moisture content.

9. **Surrogate recoveries** - Surrogates are added to your sample to monitor recovery of the test requested. A % recovery is reported, results are not corrected for the recovery measured. Typical recoveries for organics tests are 70-130%. Recoveries in soils are affected by organic rich or clay rich matrices. Waters can be affected by remediation fluids or high amounts of sediment. Test results are only ever reported if all of the associated quality checks pass; it is assumed that all recoveries outside of the values above are due to matrix affect.

10. Stones/debris are not routinely removed. We always endeavour to take a representative sub sample from the received sample.

11. In certain circumstances the method detection limit may be elevated due to the sample being outside the calibration range. Other factors that may contribute to this include possible interferences. In both cases the sample would be diluted which would cause the method detection limit to be raised.

12. Mercury results quoted on soils will not include volatile mercury as the analysis is performed on a dried and crushed sample.

13. For leachate preparations other than Zero Headspace Extraction (ZHE) volatile loss may occur.

14. For the BSEN 12457-3 two batch process to allow the cumulative release to be calculated, the volume of the leachate produced is measured and filtered for all tests. We therefore cannot carry out any unfiltered analysis. The tests affected include volatiles GCFID/GCMS and all subcontracted analysis.

15. Analysis and identification of specific compounds using GCFID is by retention time only, and we routinely calibrate and quantify for benzene, toluene, ethylbenzenes and xylenes (BTEX). For total volatiles in the C5-C12 range, the total area of the chromatogram is integrated and expressed as ug/kg or ug/l. Although this analysis is commonly used for the quantification of gasoline range organics (GRO), the system will also detect other compounds such as chlorinated solvents, and this may lead to a falsely high result with respect to hydrocarbons only. It is not possible to specifically identify these non-hydrocarbons, as standards are not routinely run for any other compounds, and for more definitive identification, volatiles by GCMS should be utilised.

16. We are accredited to MCERTS for sand, clay and loam/topsoil, or any of these materials - whether these are derived from naturally occurring soil profiles, or from fill/made ground, as long as these materials constitute the major part of the sample. Other coarse granular material such as concrete, gravel and brick are not accredited if they comprise the major part of the sample.

17. **Tentatively Identified Compounds (TICs)** are non-target peaks in VOC and SVOC analysis. All non-target peaks detected with a concentration above the LoD are subjected to a mass spectral library search. Non-target peaks with a library search confidence of >75% are reported based on the best mass spectral library match. When a non-target peak with a library search confidence of <75% is detected it is reported as "mixed hydrocarbons". Non-target compounds identified from the scan data are semi-quantified relative to one of the deuterated internal standards, under the same chromatographic conditions as the target compounds. This result is reported as a semi-quantitative value and reported as Tentatively Identified Compounds (TICs). TICs are outside the scope of UKAS accreditation and are not moisture corrected.

### 18. Sample Deviations

If a sample is classed as deviated then the associated results may be compromised.

1	Container with Headspace provided for volatiles analysis
2	Incorrect container received
3	Deviation from method
§	Sampled on date not provided
◆	Sample holding time exceeded in laboratory
@	Sample holding time exceeded due to late arrival of instructions or samples

### 19. Asbestos

When requested, the individual sub sample scheduled will be analysed in house for the presence of asbestos fibres and asbestos containing material by our documented in house method TM048 based on HSG 248 (2005), which is accredited to ISO17025. If a specific asbestos fibre type is not found this will be reported as "Not detected". If no asbestos fibre types are found all will be reported as "Not detected" and the sub sample analysed deemed to be clear of asbestos. If an asbestos fibre type is found it will be reported as detected (for each fibre type found). Testing can be carried out on asbestos positive samples, but, due to Health and Safety considerations, may be replaced by alternative tests or reported as No Determination Possible (NDP). The quantity of

#### Identification of Asbestos in Bulk Materials & Soils

The results for identification of asbestos in bulk materials are obtained from supplied bulk materials which have been examined to determine the presence of asbestos fibres using ALS (Hawarden) in-house method of transmitted/polarised light microscopy and central stop dispersion staining, based on HSG 248 (2005).

The results for identification of asbestos in soils are obtained from a homogenised sub sample which has been examined to determine the presence of asbestos fibres using ALS (Hawarden) in-house method of transmitted/polarised light microscopy and central stop dispersion staining, based on HSG 248 (2005).

Asbestos Type	Common Name
Chrysotile	White Asbestos
Amosite	Brown Asbestos
Crocidolite	Blue Asbestos
Fibrous Actinolite	-
Fibrous Anthophyllite	-
Fibrous Tremolite	-

#### Visual Estimation Of Fibre Content

Estimation of fibre content is not permitted as part of our UKAS accredited test other than: - Trace - Where only one or two asbestos fibres were identified.

#### Respirable Fibres

Respirable fibres are defined as fibres of <3 µm diameter, longer than 5 µm and with aspect ratios of at least 3:1 that can be inhaled into the lower regions of the lung and are generally acknowledged to be most important predictor of hazard and risk for cancers of the lung.  
 Standing Committee of Analysts, *The Quantification of Asbestos in Soil (2017)*.

**Further guidance on typical asbestos fibre content of manufactured products can be found in HSG 264.**

**The identification of asbestos containing materials and soils falls within our schedule of tests for which we hold UKAS accreditation, however opinions, interpretations and all other information contained in the report are outside the scope of UKAS accreditation.**