

Legend

Please see page 2 for the Dredge Co-ordinates

© ABP (2016). © ABPmer (2016). TCE © Crown Copyright 2016. ©CEFAS 2016. © EA Copyright (2016). All rights reserved. Contains public sector information licensed under the Open Government Licence v3.0. BGS - Derived from 1:50 000 scale BGS Digital Data, British Geological Survey - NERC. UKHO © British Crown Copyright 2016. All rights reserved. Data reproduced with the permission of RSPB. © Crown Copyright and database rights 2016. Ordnance Survey 0100031673

1: 14,663

0.5 0 0.23 0.5 Miles

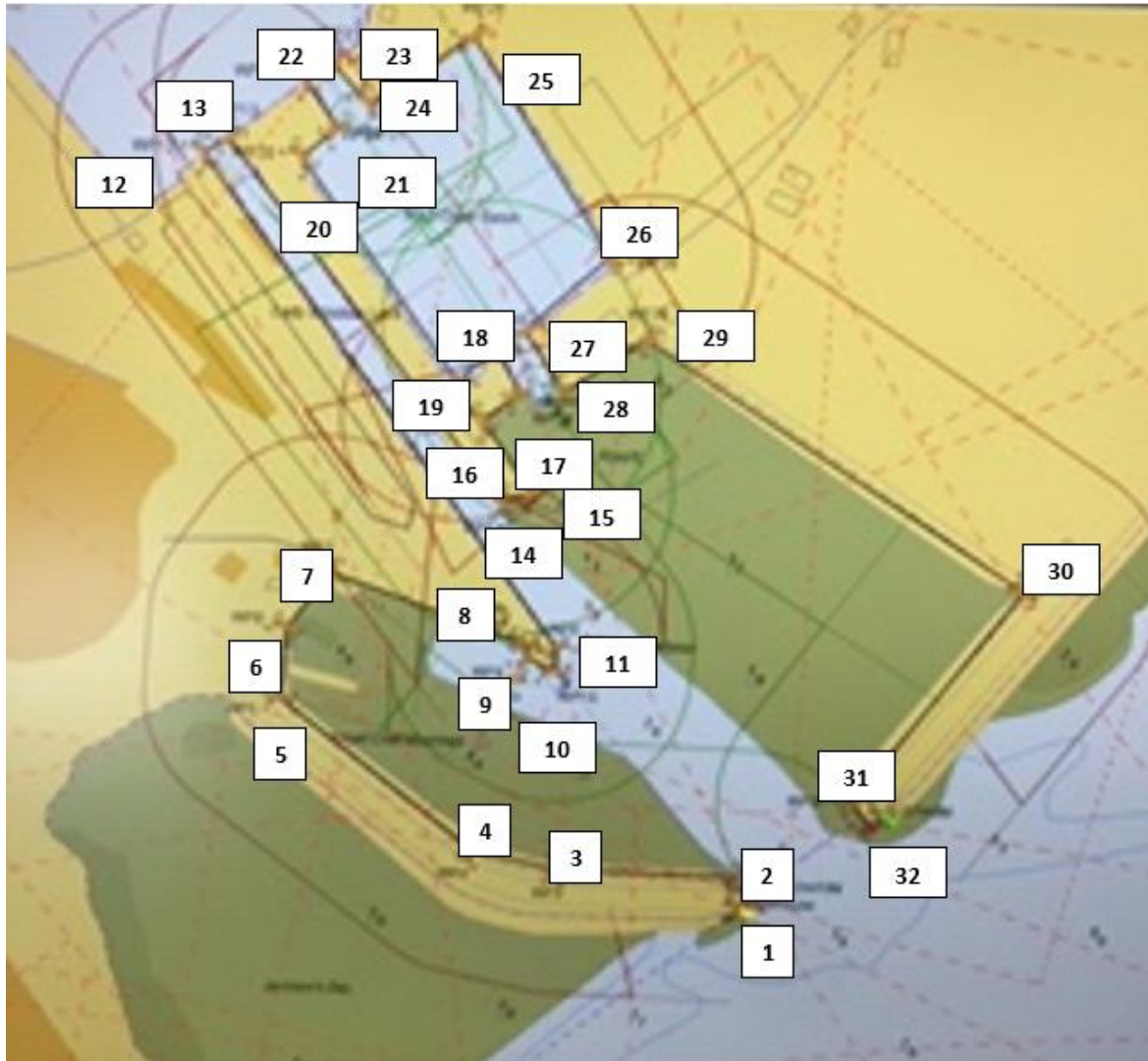
British_National_Grid
© Associated British Ports

DRAFT DOCUMENT

This map is a user generated draft output from the ABP Data Viewer and is for reference only. Data layers that appear on this map may or may not be accurate, current, or otherwise reliable.

THIS MAP IS NOT TO BE USED FOR NAVIGATION

Notes



1	51 23.47N	3 15.50W
2	51 23.48N	3 15.50W
3	51 23.48N	3 15.62W
4	51 23.48N	3 15.68W
5	51 23.55N	3 15.80W
6	51 23.58N	3 15.79W
7	51 23.60N	3 15.77W
8	51 23.57N	3 15.64W
9	51 23.57N	3 15.63W
10	51 23.56N	3 15.63W
11	51 23.57N	3 15.62W
12	51 23.76N	3 15.84W
13	51 23.76N	3 15.82W
14	51 23.63N	3 15.66W
15	51 23.63N	3 15.64W
16	51 23.66N	3 15.67W
17	51 23.67N	3 15.65W
18	51 23.69N	3 15.66W
19	51 23.67N	3 15.69W
20	51 23.76N	3 15.78W
21	51 23.77N	3 15.76W
22	51 23.79N	3 15.78W
23	51 23.79N	3 15.76W
24	51 23.78N	3 15.74W
25	51 23.80N	3 15.68W
26	51 23.72N	3 15.60W
27	51 23.69N	3 15.65W

28	51 23.67N	3 15.62W
29	51 23.69N	3 15.57W
30	51 23.60N	3 15.33W
31	51 23.51N	3 15.43W
32	51 23.50N	3 15.42W