



## Noise and Vibration Management Plan

---

Pengarnddu Industrial Estate Transfer Station

**Hampshire Demolition and Recycling Limited**

Report No. CRM.0127.001.PE.R.012



## Contact Details:

Enzygo Ltd. (Bristol Office)  
The Byre  
Woodend Lane  
Cromhall  
Gloucestershire  
GL12 8AA

tel: 01454 269237  
email: Robert.Chamberlain@enzygo.com  
www: enzygo.com

## Noise and Vibration Management Plan V4

Project:	Pengarnddu Industrial Estate Transfer Station
For:	Hampshire Demolition and Recycling Limited
Status:	FINAL
Date:	November 2020
Author:	Steph Charnaud, Director of Permitting
Reviewer:	Peter Cumberlidge, Director

### Disclaimer:

This report has been produced by Enzygo Limited within the terms of the contract with the client and taking account of the resources devoted to it by agreement with the client.

We disclaim any responsibility to the client and others in respect of any matters outside the scope of the above.

This report is confidential to the client and we accept no responsibility of whatsoever nature to third parties to whom this report, or any part thereof, is made known. Any such party relies on the report at their own risk.

Enzygo Limited Registered in England No. 6525159  
Registered Office Stag House Chipping Wotton-Under-Edge Gloucestershire GL12 7AD

## Contents

---

1.0 Introduction .....	3
1.1 Overview .....	3
1.2 Aims and Objectives .....	3
1.3 Site Location .....	4
1.4 Site Description .....	4
1.5 Sensitive Receptors .....	7
2.0 Sources of Noise and Vibration and Control Measures .....	9
2.1 Sources of Noise and Vibration .....	9
2.2 General Principles of Noise and Vibration Control .....	9
2.3 Source Assessment and Specific Control Measures .....	10
3.0 Monitoring, Reporting and Complaints Procedures .....	14
3.1 Monitoring .....	14
3.2 Complaints and Incident Review .....	14
3.3 Responsibility for the Implementation of this Plan .....	15
3.4 Notifying Natural Resources Wales .....	15

## Tables and Figures

---

Figure 1.4.1 Proposed Permit Boundary .....	5
Figure 1.4.2 Wind Statistics: Ebbw Vale/Rassau Weather Station .....	6
Table 1.4.3 Potential Additional Sources of Noise and Vibration Emissions in Vicinity of Site .....	6
Table 1.5.1: Sensitive Receptors .....	7
Table 2.3.1 Source Assessment Mitigation .....	11

## Drawings and Appendices

---

Appendix A – Sensitive Receptors and Site Plans .....	16
---	----

Appendix B – Noise Complaint Form .....	17
---	----

## 1.0 Introduction

---

### 1.1 Overview

- 1.1.1 This Noise and Vibration Management Plan (NVMP) has been prepared to support an Environmental Permit application for a waste transfer and treatment facility in Pengarnddu Industrial Estate area of Merthyr Tydfil. The operator of the site will be Hampshire Demolition and Recycling Limited (“the Operator”). Drawings of the site can be seen in Appendix A of this document.
- 1.1.2 The site was previously occupied and operated by Merthyr Industrial Services Limited (MIS) who operated a waste management facility and biomass boiler. That operation was abandoned in December 2014 after court proceedings. Numerous piles of waste material, plant and equipment was left on the site after it was abandoned. The majority of the waste material still remains in-situ.

### 1.2 Aims and Objectives

- 1.2.1 This Noise and Vibration Management Plan contains:

- An assessment of the risks from noise and vibration emissions at the site;
- The control measures to be implemented at the site to manage those risks;
- Details of proposed monitoring regimes;
- Actions, contingencies and responsibilities to address noise and vibration issues should they arise; and
- Procedures to review the effectiveness of noise and vibration control measures at the site.

- 1.2.2 This NVMP will be transposed into the site’s Environmental Management System (EMS) following approval by NRW. The plan will be updated and reviewed in accordance with the requirements of the site’s management system. It outlines the main sources of potential noise and vibration emissions at the site, the mitigation measures to be used to reduce the risk of noise and vibration impacting off site receptors and the monitoring and reporting methods to be used when the site becomes operational.

- 1.2.3 This NVMP is intended to be used as a stand-alone working document for operational staff on a day to day basis. Copies of this document will be held across the site and will be readily accessible by all site operatives. All on site personnel and contractors will be briefed on the contents of this plan to ensure on site personnel understand the measures in place to prevent emissions of noise and vibration.

- 1.2.4 This document has been prepared in accordance with the following key guidance:

- Horizontal Guidance Note IPPC H3 (Part 2): Noise Assessment and Control; Version 3, June 2004;
- Natural Resources Wales Guidance: How to comply with your environmental permit; Version 8, October 2014;
- Environment Agency Guidance: Develop a management system: Environmental permits, February 2019 (Updated January 2019);

- Environment Agency Guidance: Control and monitor emissions for your environmental permit, February 2016 (Updated November 2018); and
- Environment Agency Guidance: Risk assessments for your environmental permit, February 2019 (Updated February 2020).

### 1.3 Site Location

1.3.1 The site location can be seen in the Site Location Plan referenced CRM.0127.001.PE.D.001.

1.3.2 The site address is:

Pengarnddu Industrial Estate Transfer Station  
Unit 2 Pengarnddu Industrial Estate  
Pengarnddu  
Merthyr Tydfil  
Wales  
CF48 2TA

1.3.3 The National Grid Reference for the site is **SO 07780 08940**.

### 1.4 Site Description

1.4.1 The site is located approximately 700m to the north of Dowlais Top on the opposite side of the A465, approximately 765m east of Pant, approximately 2.8kms to the west of Rhymney and 3km north east of Merthyr Tydfil.

1.4.2 The nearest residential properties are located approximately 192m to the west of the site on an unnamed road.

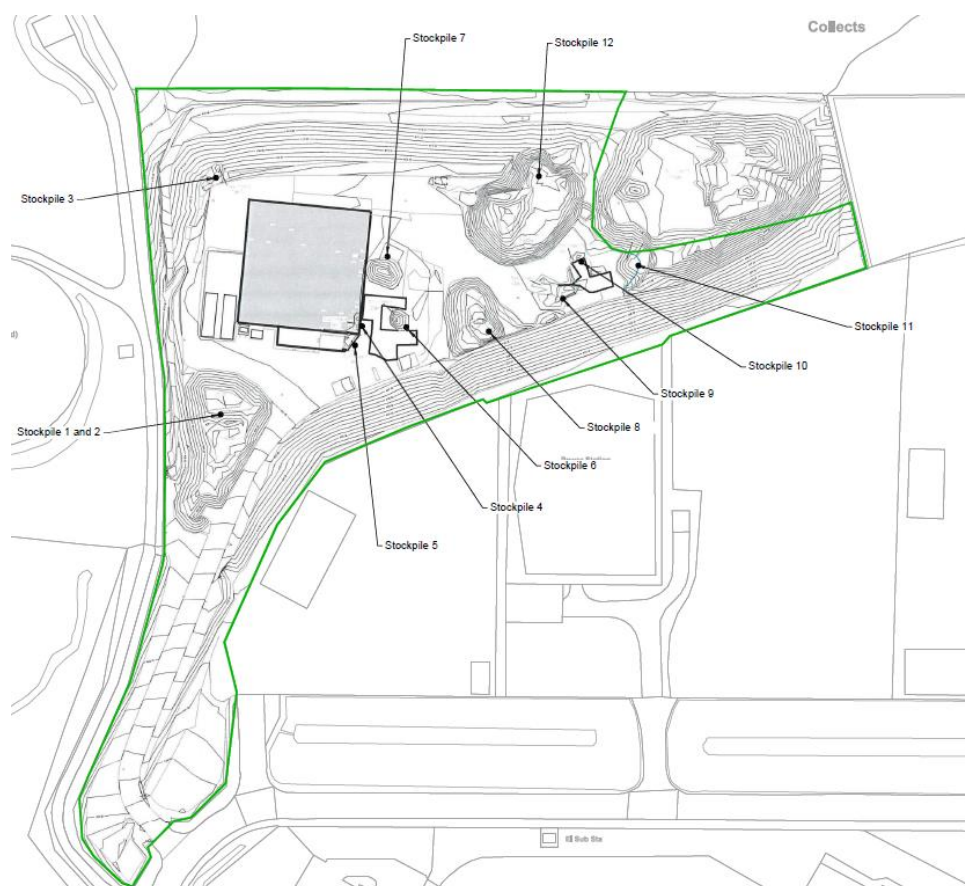
1.4.3 There are a series of unnamed ditches which run around the perimeter of the site, the Nant Carno is located approximately 1012m to the east of the site and there is a covered reservoir located approximately 16m to the west of the site boundary.

1.4.4 The site is located above a minor aquifer with variable permeability. The site is not located within a flood zone.

1.4.5 The site area can be seen on the Proposed Permit Boundary Plan referenced CRM 0127 001 PE D 002 in Appendix A and in Figure 1.4.1 below.



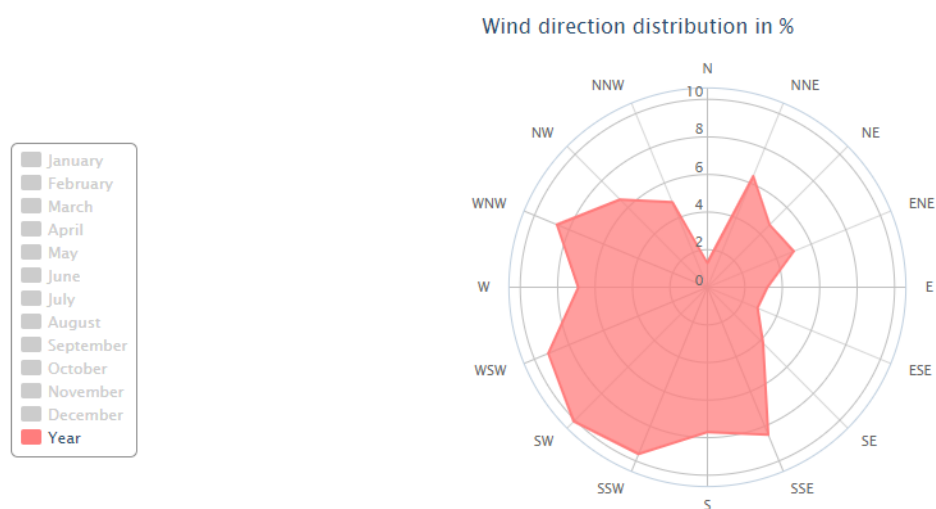
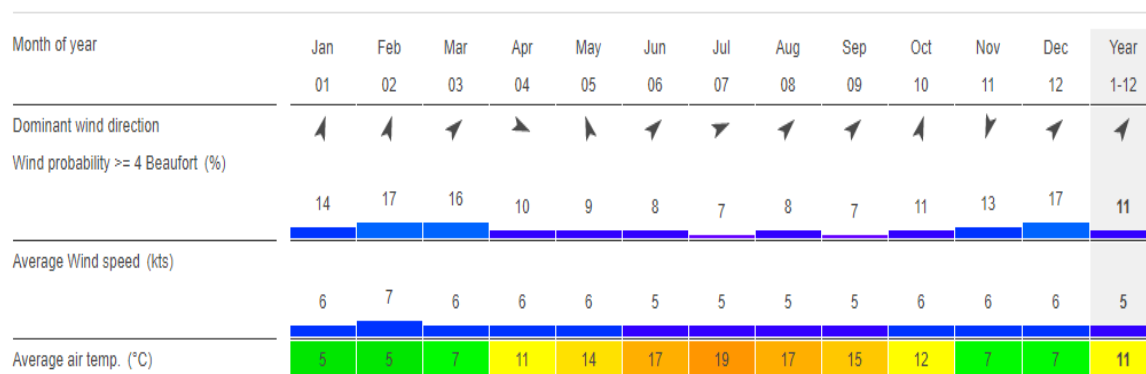
**Figure 1.4.1 Proposed Permit Boundary**



1.4.6 Meteorological data from the nearest monitoring station to the site, as summarised on [www.windfinder.com](http://www.windfinder.com), is presented below. Measurements at the Ebbw Vale/Rassau Weather Station were taken daily between 04/2013 and 05/2019 and show that the prevailing wind at the site is generally from the south-west.

1.4.7 Statistics from the weather station are presented in Figure 1.4.2 below.

**Figure 1.4.2 Wind Statistics: Ebbw Vale/Rassau Weather Station**



Images taken from [www.windfinder.com](http://www.windfinder.com) ©

1.4.8 Table 1.4.3 below identifies potential additional sources of dust emissions in the vicinity of the site.

**Table 1.4.3 Potential Additional Sources of Noise and Vibration Emissions in Vicinity of Site**

Source and Address	Operation Type	Distance (m) and Direction
<b>Reclamation Specialists South Wales</b> 1 Tydfil Terrace, Troedryhiw, Merthyr Tydfil CF48 2TA	Reclamation centre	0 S
Containerised combustion plant (unnamed- within above site)	Energy generation facility	30 ESE
<b>New Tredegar Skip Hire</b> Unit 5 Pengarnddu Ind Est, Merthyr Tydfil CF48 2TA	Skip hire company	150 S
<b>Merthyr Reclamation</b> 6 Pengarnddu Business Park, Merthyr Tydfil CF48 2TA	Reclamation centre	150 E
<b>Reclaimed Stone</b> Blaen Morlais Farm, Pengarnddu, Merthyr Tydfil	Reclamation centre	434 NW



Source and Address	Operation Type	Distance (m) and Direction
CF48 2TH		
<b>Heads of the Valley Salvage</b> Dowlais Top, Merthyr Tydfil CF48 2YG	Scrap metal dealer	500 SE
<b>Noise associated with traffic from the A465 and A4060</b>	Infrastructure	800 S
<b>Biffa (Trecatti Landfill Site)</b> Trecatti Landfill Site, Merthyr Tydfil CF48 4AB	Landfill site	1050 SSE

## 1.5 Sensitive Receptors

1.5.1 Key receptors that have been identified with the potential to be impacted by fugitive emissions of noise and vibration from the site are presented in Table 1.5.1 below.

1.5.2 A sensitive receptor plan referenced CRM.0127.001.PE.R.003 is included in Appendix A.

**Table 1.5.1: Sensitive Receptors**

Receptor	Type	Distance and Direction (m)
Merthyr Reclamation	Business	0 S
Merthyr Salvage and Recycling	Business	15 E
Abba	Business	18 S
St Merryn	Business	105 ESE
New Tredegar Skip Hire	Business	150 SW
Residential houses	Residential	192 W
B&M Home Store	Business	243 S
Carpet Right	Business	277 S
Poundstretcher	Business	285 S
Houses on an unnamed road	Residential	300 SW
Trade Price Sofas	Business	339 SW
ASDA	Business	400 S
Comfort Zone Merthyr	Business	420 S
Lidl	Business	430 SE
Reclaimed Stone	Business	434 NW
Heads of the Valleys Salvage	Business	434 SE
CEMEX Merthyr Tydfil Concrete Plant	Business	437 SE
Jepson's Pond	Ecological	444 NW
Valleys Filling Station	Business	607 SE
Closest house at Dowlais Top	Residential	626 S
Closest house at Pant	Residential	714 W
Pantysgallog Primary School	Educational	1009 W
Trecatti Landfill Site	Business	1000 SE
Blean Carno Farm	Residential/Business	1006 ESE
Nant Carno	Ecological	1012 E

Receptor	Type	Distance and Direction (m)
Cwm Taf Fechan Woodlands (SSSI)	Ecological	2125 NW

## 2.0 Sources of Noise and Vibration and Control Measures

---

### 2.1 Sources of Noise and Vibration

2.1.1 Emissions of noise and vibration from the site are associated with the following key sources:

- Site vehicles and plant transporting materials around the site;
- Waste processing activities (screening, shredding, trommelling, crushing etc);
- Vehicles removing processed material from the site; and
- Emission during abnormal operations.

2.1.2 The location, nature and contribution to levels of noise and vibration emissions from the sources above are described in Table 2.3.1 below.

2.1.3 Mitigation measures in place for each of the key sources identified are also described.

### 2.2 General Principles of Noise and Vibration Control

2.2.1 The Operator has taken account of the general principles for noise and vibration control when planning operation at the site. Noise levels at sensitive receptors can be minimised by:

- Reduction at source;
- Ensuring adequate distances between the source and receiver; and
- The use of barriers between the source and receiver (where necessary).

2.2.2 The hierarchy for control measures in order to minimise the risk of noise and vibration impacts to off-site receptors are outlined below:

1. Prevent generation of noise at source by good design and maintenance;
2. Minimise or contain noise at source by observing good operational techniques and management practice;
3. Use physical barriers or enclosures to prevent transmission to other media;
4. Increase the distance between the source and receiver; and
5. Sympathetic timing and control of unavoidably noisy operations.

2.2.3 Given that the site cannot be moved, the waste is already present on site and the operation is of a temporary nature some of the general principals of noise and vibration control listed above are not applicable or proportionate to the temporary nature of operations at the site.

2.2.4 Given the above, the general principals of noise and vibration controls which are deemed both proportionate and appropriate for this site are:

- Reduction of noise at source;
- Prevention of noise generation at source by good design and maintenance;
- Minimising noise and vibration by observing good operational techniques and management practice;

- Sympathetic timing and control of unavoidable noise operations.

## **2.3 Source Assessment and Specific Control Measures**

- 2.3.1 Table 2.3.1 below sets out the main noise and vibration forming processes at the site. For each of the processes, the noise is characterised, and the emissions rating given as Low, Moderate or High. Noise and vibration prevention and suppression techniques are described for each key source.
- 2.3.2 The closest receptors to the site in the direction of the prevailing wind are other waste processing sites similar to the proposed operation. The nearest residential receptors which may be susceptible to noise from the site are upwind of the prevailing wind direction. The waste processing activities will be carried out to the east of the building, already present on site, which will provide a level of attenuation. Due to the temporary nature of the site it is not deemed proportionate to install noise barriers, and indeed given the amount of available space on site makes this impractical at present. The option to install barriers will be reviewed as waste is processed and moved off site, if the proposed measures are not adequate to prevent excessive noise emissions.

**Table 2.3.1 Source Assessment Mitigation**

Source	Nature of Emission	Location	Emission Rating	Prevention and Suppression Techniques
Site vehicles and plant transporting material around the site	<p>Diesel engines and reversing alarms from site vehicles</p> <p>Audible only at the closest receptors</p> <p>Intermittent – restricted to periods where material is being moved around the site</p>	Across the entire site	Low – Moderate	<p>White noise reversing alarms fitted to all site vehicles</p> <p>All vehicles maintained in accordance with manufacturers recommendations</p> <p>Anti-idling policy in place at the site, with all vehicles and plant switched off when not in use</p> <p>Site vehicles to utilise hardstanding site surfaces where possible – reducing vibration and noise from site surfaces</p> <p>Speed limit of 15mph is in place on site</p> <p>Site activities are restricted to Monday – Saturday; 07:30 – 18:30. These hours of operation ensure site activities which could potentially create noise and vibration are undertaken outside of night time hours (2300-0700) and Sundays</p>
Waste processing activities (screening, shredding, crushing, etc)	<p>Intermittent noise emission as material is broken down</p> <p>Audible at most nearby receptors</p> <p>Intermittent – restricted to periods where material is being processed</p>	Waste processing area only	Medium	<p>Waste processing area is located adjacent to the building on site. This location has been chosen to ensure the building provides a barrier between the closest sensitive residential receptors and the waste processing area.</p> <p>All equipment to be operated by trained site operatives only</p> <p>All equipment to be used and maintained in line with manufacturers recommendations</p> <p>Site activities are restricted to Monday – Saturday 07:30 – 18:30. These hours of operation ensure site activities which could potentially create noise and vibration are undertaken outside of night time hours (2300-0700) and Sundays</p>

Source	Nature of Emission	Location	Emission Rating	Prevention and Suppression Techniques
				Noise and vibration can be carried on the wind. The prevailing wind direction (from the south-west) is away from the nearest sensitive receptors.
Vehicles removing processed materials from the site (Inc. loading of material)	<p>Diesel engines and reversing alarms during material loading</p> <p>Audible only at the closest receptors</p> <p>Intermittent – restricted to periods where material is being transported off site</p>	Waste storage areas and site entrance / access	Low	<p>Drop heights of material from shovel loaders minimised where possible</p> <p>All material loading to be undertaken under the supervision of trained site operatives</p> <p>Site activities are restricted to Monday – Saturday 07:30 – 18:30. These hours of operation ensure site activities which could potentially create noise and vibration are undertaken outside of night time hours (2300-0700) and Sundays</p> <p>Speed limit of 15mph is in place on site</p>
Abnormal operations	Increased noise & vibration emissions from plant and equipment due to malfunction of poor equipment maintenance	Across the entire site	Low - Medium	<p>Preventative maintenance of vehicles and equipment shall limit the likelihood of failure/breakdown</p> <p>In the unlikely event that vehicles or equipment do break down then they will not be used until fully repaired to their original state</p>

2.3.3 Noise and vibration prevention and mitigation techniques in place to reduce the likelihood of impacts to receptors include:

- Site activities are restricted to Monday – Saturday (07:30 – 18:30);
- The waste processing area is located adjacent to the building on site, with the building and landscaping lying between this area and the closest receptors;
- All waste processing equipment and site vehicles are to be operated and maintained by trained site operatives only in line with manufacturers recommendations;
- White noise reversing alarms fitted to all site vehicles;
- An anti-idling policy is in place at the site, with all vehicles and plant switched off when not in use;
- Site vehicles are to utilise hardstanding site surfaces where possible – reducing vibration and noise as vehicles move around the site;
- All material loading is to be undertaken under the supervision of trained site operatives, with drop heights from shovel loaders minimised; and
- A speed limit of 15mph is in place across the site.



## 3.0 Monitoring, Reporting and Complaints Procedures

---

### 3.1 Monitoring

3.1.1 General monitoring of noise and vibration emissions will be carried out by the TCM for the site or acting deputy on a daily basis. All staff employed on site will receive training in the identification of excessive noise and vibration emissions and what issues to look out for to proactively prevent emissions occurring.

3.1.2 Records of monitoring will be documented in the site diary, including:

- Records of processes and checks carried out to minimise noise emission from normal operations (including planned preventative maintenance, visual inspections and checks);
- Records of processes and checks carried out to minimise noise emission from abnormal operations (including reactive maintenance to address increased noise or vibration emissions and the replacement of equipment); and
- Records of monitoring and compliance checks undertaken.

3.1.3 All records will be kept on site for inspection by NRW.

3.1.4 Monitoring for noise and vibration shall be carried out at the monitoring points M1-M4 as shown on the drawing titled DMP Site Layout. These points have been chosen as they are downwind of the prevailing wind direction. Wind can help transmit noise emissions. Monitoring will also be undertaken at the site entrance. Monitoring will be carried out by trained site operatives, the TCM or the Site Manager.

3.1.5 Monitoring shall be carried out at the above locations when shredding and trommeling activities are carried out as well as when waste is being loaded onto vehicles and the prevailing wind is in the direction of the local sensitive receptors. Wind direction is indicated by looking at the flag in place on site. These activities are considered to be the most likely of generating noise levels above 70db at the site, which could be considered as being excessive, and potentially cause off-site impacts.

3.1.6 If the monitoring identifies that noise impacts are occurring off-site the TCM will temporarily shut down site operations until a review of prevention and suppression techniques is complete and the Operator is confident that they can operate without causing impacts off site.

3.1.7 No permanently installed noise and vibration monitors and/or trigger alarms are considered proportionate or necessary due to the temporary nature of the site operations. Following receipt of off-site complaints and/or perceived impacts this will be reviewed.

### 3.2 Complaints and Incident Review

3.2.1 Should excessive noise and vibration emissions be detected at the site boundary, a note of this will be made in the site diary and the Site Manager will take appropriate steps to mitigate it, including:

- Inspection of site operations to identify the source emissions;
- Cessation of activity generating excessive noise or vibrations; and
- Review of site operation procedures to reduce the likelihood of recurrence.

- 3.2.2 Noise complaints received at the facility will be reported to NRW and followed up on with on-site investigation, which will also be reported to NRW via the appropriate Environmental Permit Notification System. A noise and vibration complaint form is included as Appendix B.
- 3.2.3 It is important to record and act upon complaints received and communicate the outcome of the investigation to the complainant. It is equally important to undertake a review following complaints or incidents if warranted to implement further control on site to prevent the event from reoccurring. The Operator will undertake a formal review of onsite processes following any major incident and will routinely review any complaints received as and when they occur.
- 3.2.4 All records of events and actions taken will be retained as required by the Environmental Permit.

### **3.3 Responsibility for the Implementation of this Plan**

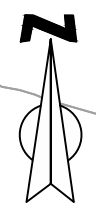
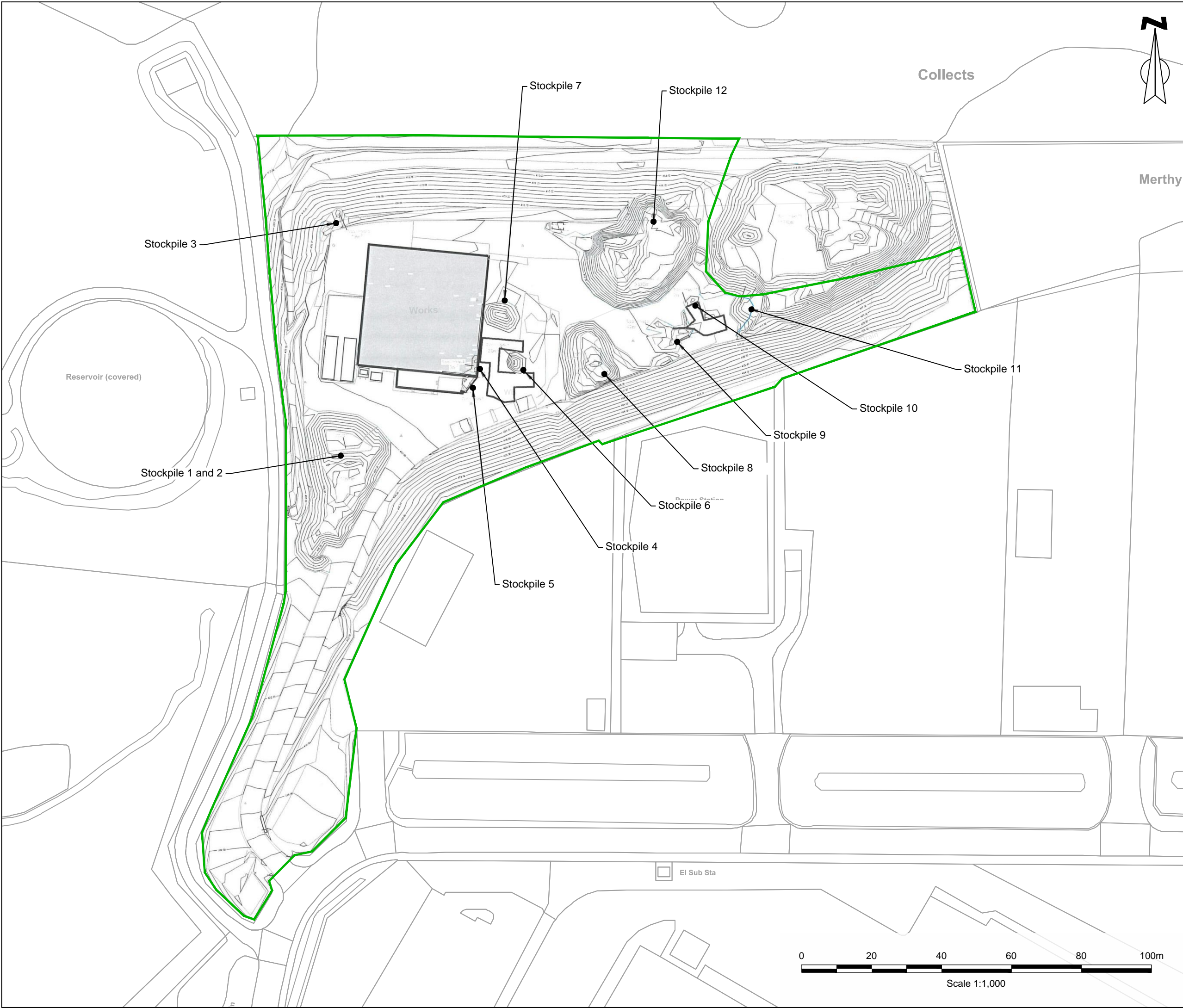
- 3.3.1 The sites Environmental Management System (EMS) and this NVMP (which forms part of the EMS) is the responsibility of the site's Technically Competent Manager (TCM) and their deputy.
- 3.3.2 This NVMP will be reviewed every 4 years or following a noise complaint. Any technical and managerial changes on site will also initiate a review to ensure that the noise mitigation and control techniques remain appropriate for the site.
- 3.3.3 The CIWM/WAMITAB continuing competence scheme is designed to ensure that the technically competent person on a waste site has knowledge and skills that keep pace with changes made across the waste management industry, such as the introduction of new legislation, technologies and techniques.
- 3.3.4 The CIWM/WAMITAB continuing competence scheme requires technically competent people in England and Wales to pass an assessment that demonstrates individuals have kept their competence up to date. Continued competence must be demonstrated every 2 years. Copies of the relevant certificates have been provided to support this Permit application.
- 3.3.5 Where specific activities or tasks require additional training, these will be identified when preparing method statements / safe systems of works for each task, and training / toolbox talks delivered as appropriate. For contract work undertaken on site, permits to work will be issued which will detail method statements that are to consider the potential for any emissions from the activities as well as the appropriate mitigation measures to be taken whilst the works are carried out.
- 3.3.6 Staff training records are held within the site's Environmental Management System (EMS). Refresher training is delivered either by external training providers or in house (as appropriate).

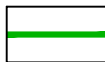
### **3.4 Notifying Natural Resources Wales**

- 3.4.1 In the event that excessive noise and vibration occurs which may cause an impact off site, the Operator will notify NRW immediately using the emergency 24hr phone line (0300 065 3000). The Site Manager for the Facility will also notify the Regulatory Officer should any complaints be received directly to site and advise what remedial measures or actions have been taken to address the issue. Copies of any relevant complaints received will be made available to NRW for review.
- 3.4.2 NRW will also be notified via the appropriate Environmental Permit Notification System.

## **Appendix A – Sensitive Receptors and Site Plans**

---

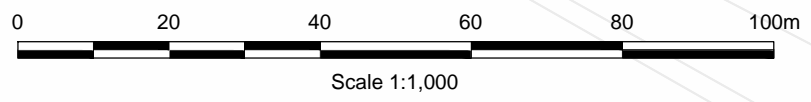


- KEY**
-  Permit Boundary
- STOCKPILE LOCATIONS**
- 1 Unprocessed/screened oversized wood/timber - 19 12 07
  - 2 Chipped screened timber stockpile - 19 05 03
  - 3 Rubble and general waste - 19 12 12
  - 4 Wood (in building) - 17 02 01
  - 5 Dagged domestic waste removed by MTCDC
  - 6 Unprocessed wood - 19 12 07
  - 7 Mixed wood chippings and work - 19 05 03
  - 8 Mixed municipal waste
  - 9 Mixed municipal waste
  - 10 Mixed municipal waste
  - 11 Mixed municipal waste
  - 12 Mixed municipal waste



Samuel House, 5 Fox Valley Way, Stocksbridge, Sheffield, S36 2AA

CLIENT:		Hampshire Demolition and Recycling Limited	
SCALE:	1:1,000@A3	PROJECT REF:	CRM.0127.001
DRAWN:	MG	CHECKED:	RC
DATE:		Oct 2019	
PROJECT:		Penganddu Industrial Estate	
TITLE:		Site Layout Plan	
DRAWING NO:		CRM.0127.001.PE.D.003	





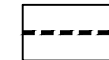
# SENSITIVE RECEPTORS

- B** Surface Watercourse
- C** Surface Watercourse
- D** Surface Watercourse
- E** Reclamation Specialists South Wales
- F** Reservoir (covered)
- G** Abba
- H** St Merryn
- I** New Tredgar Skip Hire
- J** Residential property
- K** Poundstretcher
- L** Carpetright
- M** Trade Price Sofas Wales
- N** ASDA Petrol
- O** ASDA Superstore
- P** Electricity Substation
- Q** Lidl Supermarket
- R** Reclaimed Stone
- S** Heads of the Valley Salvage
- T** CEMEX Merthyr Tydfil Concrete Plant
- U** Reservoir (open)
- V** Valley heights filling station
- W** Residential properties
- X** Residential properties
- Y** Pantysgallog Primary School
- Z** Comfort Zone Merthys
- BA** Blean Carno Farm
- BB** Nant Carno
- BC** Cwm Taf Fechan Woodlands (SSSI)
- BD** Jepsons Rond
- BE** Heads of the Velleys Roads

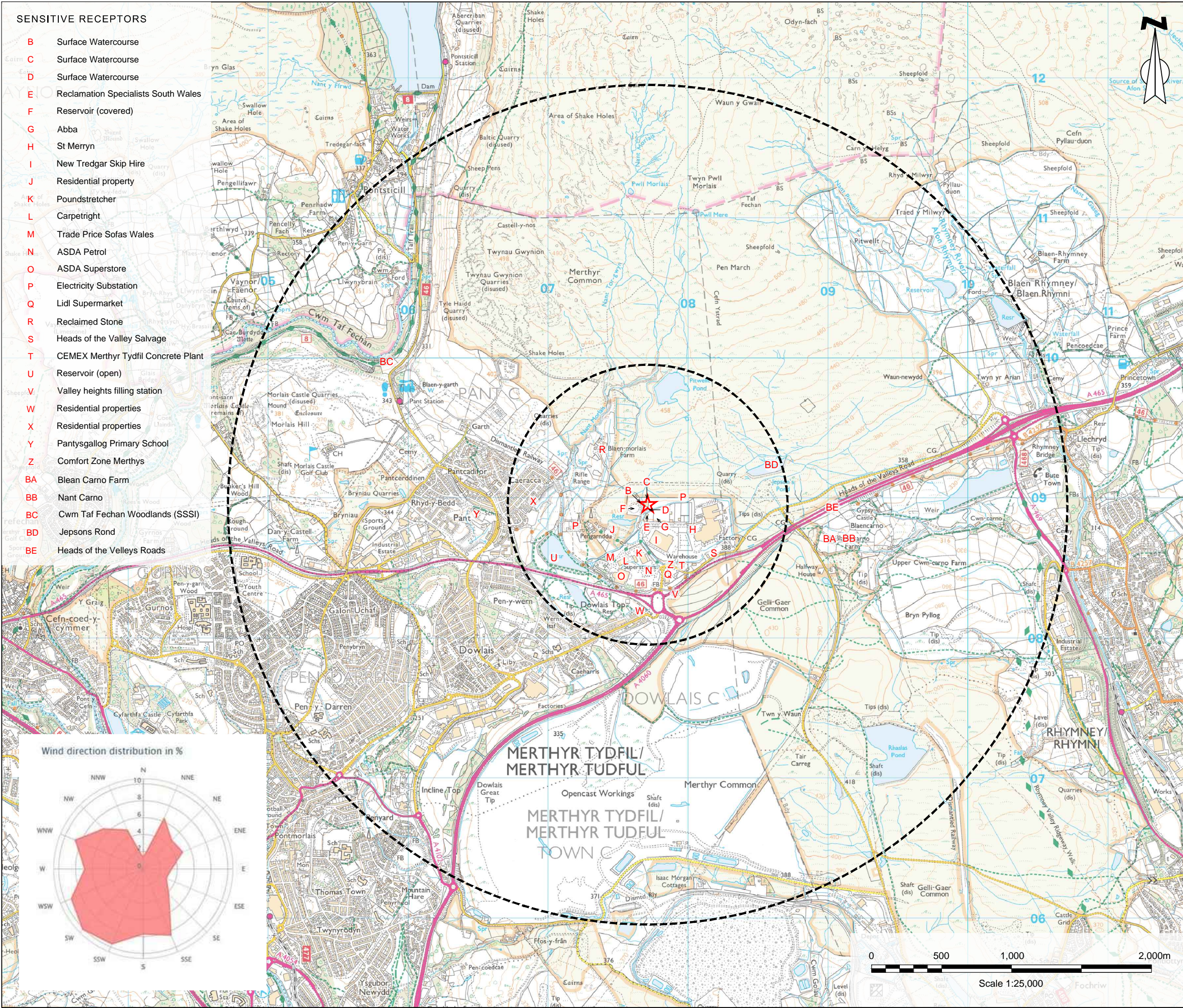
## Key



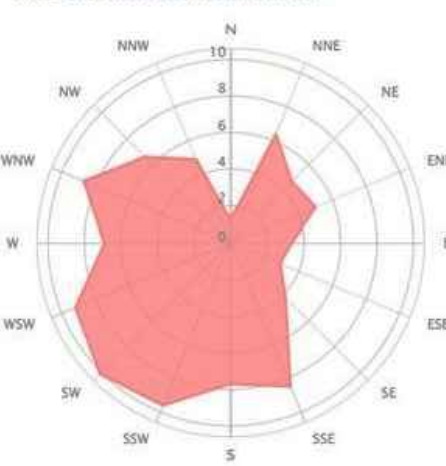
Site



1000m & 3000m Buffer Zone



### Wind direction distribution in %



**enzygo**  
environmental consultants

Samuel House, 5 Fox Valley Way, Stocksbridge, Sheffield, S36 2AA

CLIENT:  
**Hampshire Demolition and Recycling Limited**

SCALE:  
**1:25,000@A3**

PROJECT REF:  
**CRM.0127.001**

DRAWN:  
**MG**

CHECKED:  
**RC**

DATE:  
**July 2019**

PROJECT:  
**Penganddu Industrial Estate**

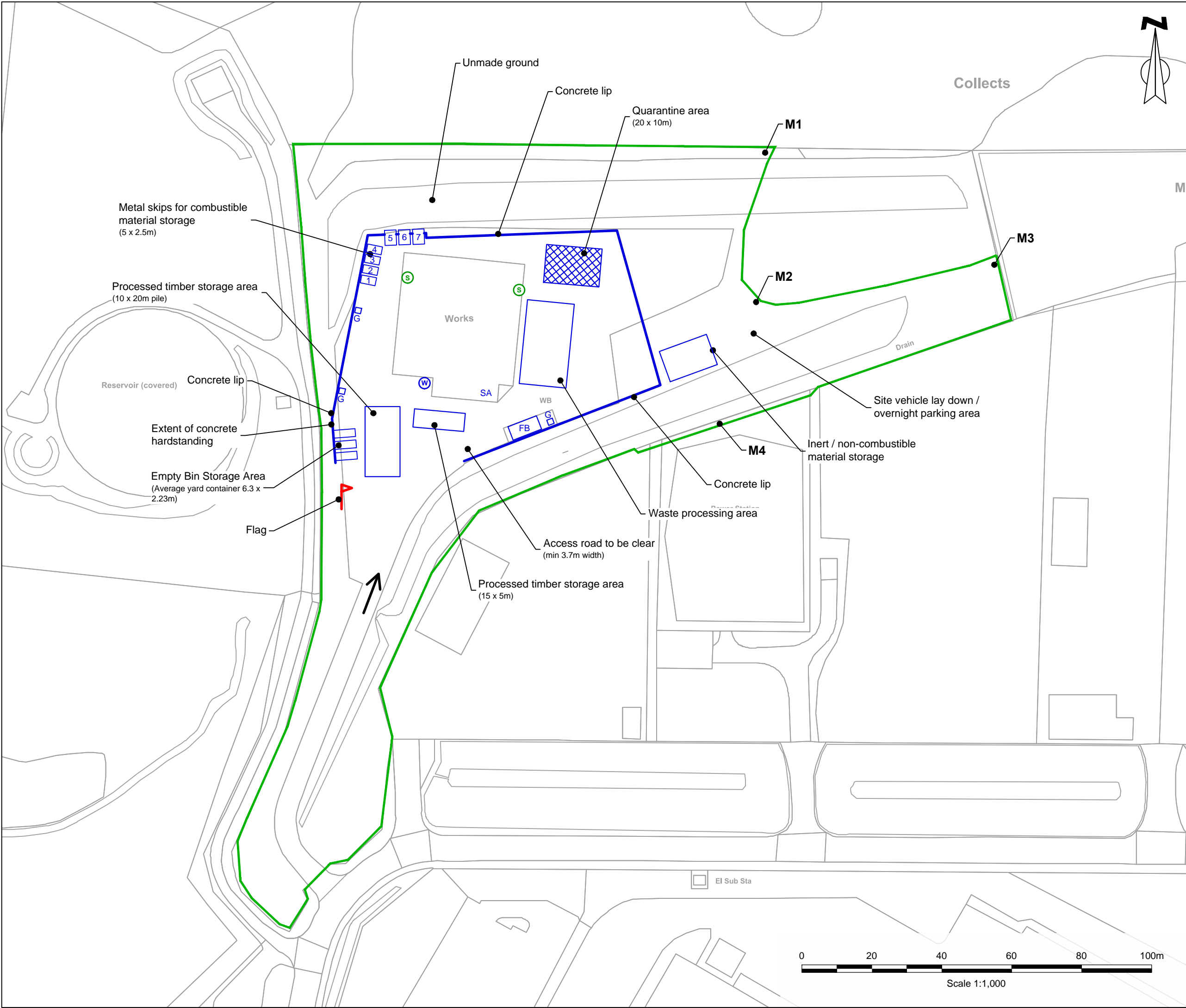
TITLE:  
**Sensitive Receptor Plan**

DRAWING NO:  
**CRM.0127.001.PE.D.001**



Scale 1:25,000





KEY

- Permit Boundary and Fence
- Concrete Hardstanding
- Water Supply Point
- Spill Pits
- Smoking Area
- Fuel Bowser
- Road Gullies

STORAGE MATERIALS (SKIPS)

- 1 Tyres and rubber
- 2 Plastic
- 3 Metals
- 4 Fines (timber)
- 5 Other fines
- 6 WEEE
- 7 Oversized items

CONTEXT PLAN  
Scale 1:10,000

**enzygo**  
environmental consultants

Samuel House, 5 Fox Valley Way, Stocksbridge, Sheffield, S36 2AA

---

CLIENT:  
**Hampshire Demolition and Recycling Limited**

---

SCALE: **1:1,000@A3** PROJECT REF: **CRM.0127.001**

---

DRAWN: **MG** CHECKED: **RC** DATE: **Sept 2020**

---

PROJECT:  
**Penganddu Industrial Estate**

---

TITLE:  
**DMP Site Layout**

---

DRAWING NO:  
**CRM.0127.001.PE.D.004**

## Appendix B – Noise Complaint Form

Complainant Details	
Name	
Address	
Postcode	
Customer Contact Details	
Tel	
Email	
Date	
Complaint Ref Number	
Complaint Details	
Investigation Details	
Investigation carried out by	
Position	
Date & time investigation carried out	
Weather conditions	
Wind direction and speed	
Investigation findings	
Feedback given to NRW and/or local authority	
Date feedback given	
Feedback given to public	
Date feedback given	
Review and Improve	
Improvements needed to prevent a reoccurrence	
Proposed date for completion of the improvements	
Actual date for completion	
If different insert reason for delay	
Does the noise management plan need to be updated?	
Date that the dust management plan was updated	
Closure	
Site manager review date	
Site manager signature to confirm no further action required	





**Enzygo specialise in a wide range of technical services:**

**Property and Sites**

**Waste and Mineral Planning**

**Flooding, Drainage and Hydrology**

**Landscape Architecture**

**Arboriculture**

**Permitting and Regulation**

**Waste Technologies and Renewables**

**Waste Contract Procurement**

**Noise and Vibration**

**Ecology Services**

**Contaminated Land and Geotechnical**

**Traffic and Transportation**

**Planning Services**

---

**BRISTOL OFFICE**

The Byre  
Woodend Lane  
Cromhall  
Gloucestershire GL12 8AA  
Tel: 01454 269 237

**SHEFFIELD OFFICE**

Samuel House  
5 Fox Valley Way  
Stocksbridge  
Sheffield S36 2AA  
Tel: 0114 321 5151

**MANCHESTER OFFICE**

Ducie House  
Ducie Street  
Manchester  
M1 2JW  
Tel: 0161 413 6444

---

Please visit our website for more information.

**enzygo.com**