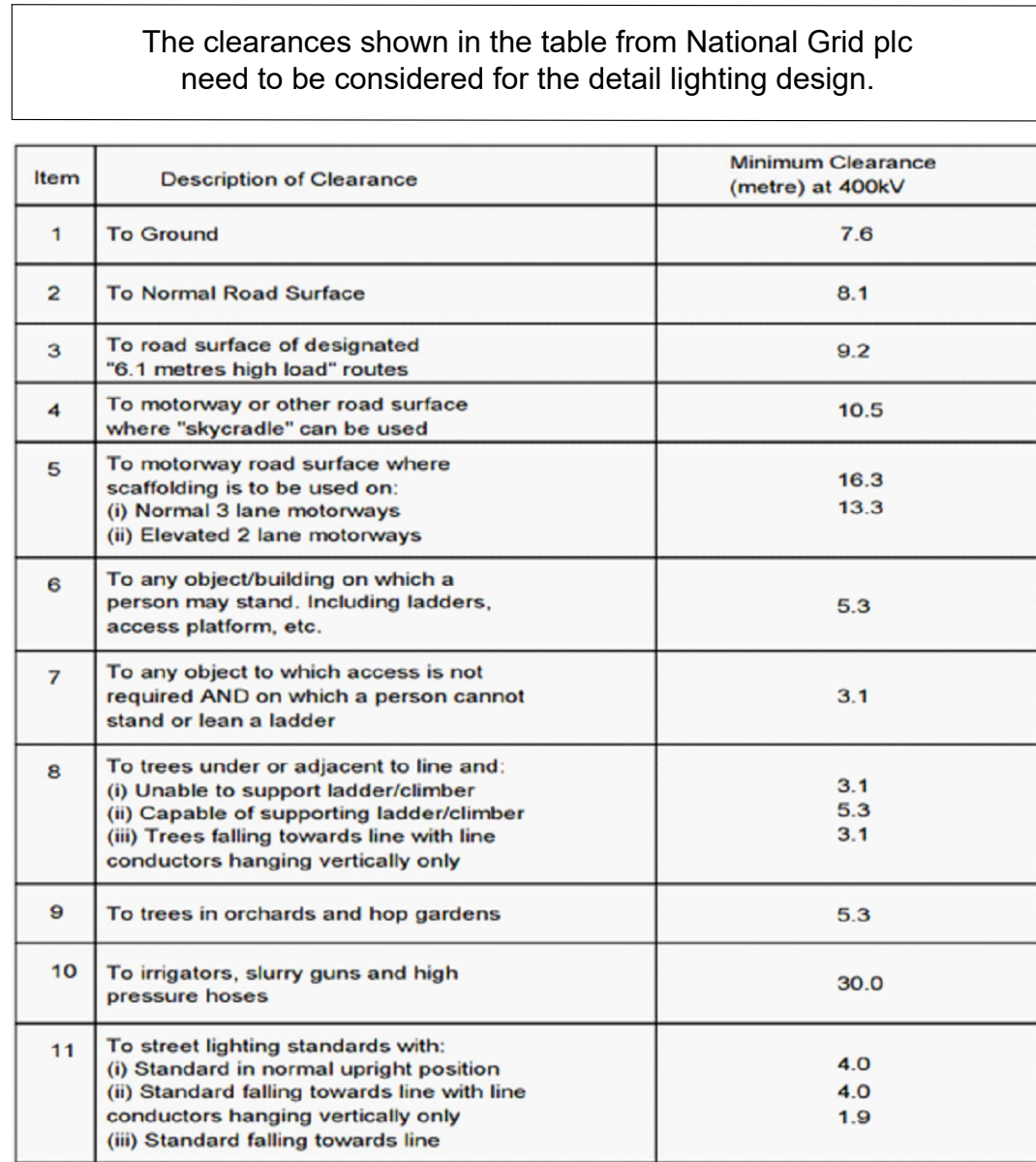


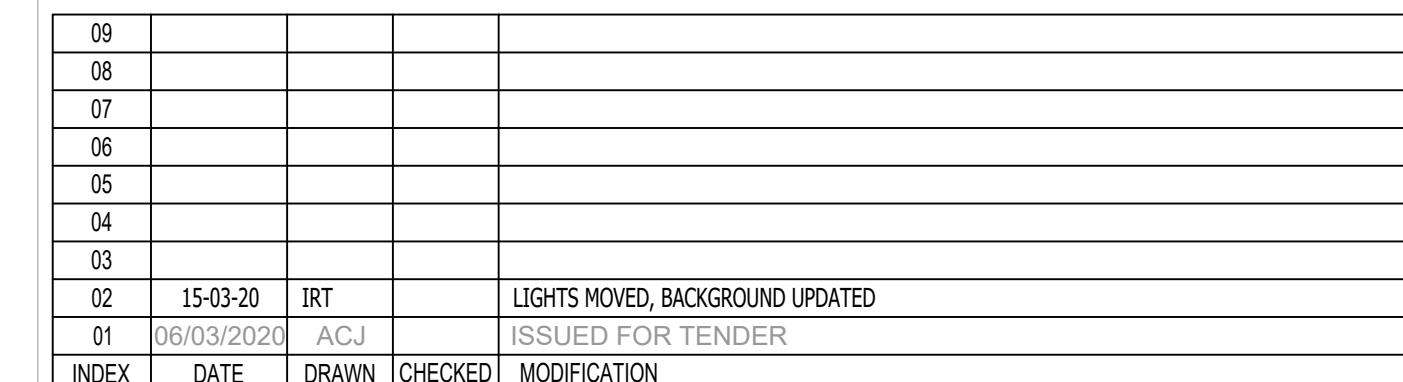
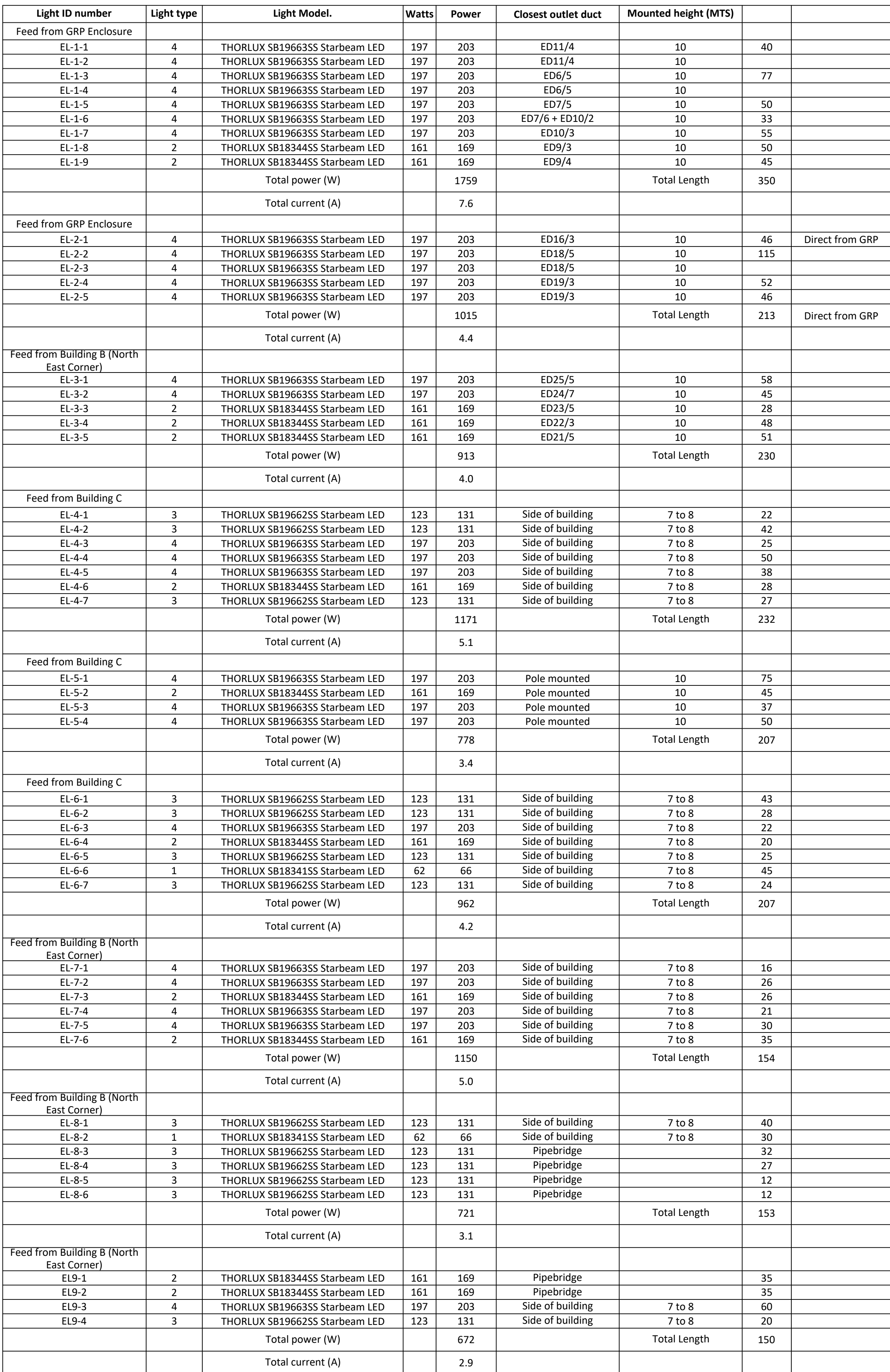
## **Appendix 26: Mill site external lighting**





BHM INGENIEURE - ENGINEERING & CONSULTING GMBH  
Runastrasse 90, 6800 Feldkirch, Austria, Telefon +43 / 5522 / 46101  
Fax +43 / 5522 / 46104, office@bhm-ing.com, www.bhm-ing.com









THE LOCATION AND COLOUR OF LIGHTS MUST NOT GIVE RISE TO THE POTENTIAL FOR CONFUSION WITH THE SIGNALING ARRANGEMENTS ON THE RAILWAY.  
THE GC SHALL OBTAIN NETWORK RAIL'S ASSET PROTECTION ENGINEERS APPROVAL OF ITS DETAILED PROPOSALS REGARDING LIGHTING.  
THE OUTSIDE LIGHTING HAS TO BE INSTALLED IN A WAY THAT IT IS NOT CAUSING ANY BLINDING EFFECTS ON THE A4063.

KEY

- 20 LX
- 50 LX

KEY FIRE COMPARTMENTS			
<div><div></div></div>	FIRE MAIN COMPARTMENT	<div><div></div></div>	FIRE SUB COMPARTMENT
<div><div></div></div>		<div><div></div></div>	SMOKE COMPARTMENT
KEY MATERIALS			
<div><div></div></div>	REINFORCED CONCRETE	<div><div></div></div>	PRECAST CONCRETE ELEMENT
<div><div></div></div>	BRICKWORK	<div><div></div></div>	PRECAST CONCRETE ELEMENT
<div><div></div></div>	PLASTERBOARD	<div><div></div></div>	HEAT INSULATION RIGID
<div><div></div></div>	EXISTING BUILDING	<div><div></div></div>	DEMOLITION
<div><div></div></div>		<div><div></div></div>	HEAT INSULATION SOFT
<div><div></div></div>		<div><div></div></div>	SANDWICH PANEL
<div><div></div></div>		<div><div></div></div>	GLASS
KEY ROOM			
TFF = TOP FINISH FLOOR	RH = ROOM HEIGHT	TL = TOP LEVEL	<div><div></div></div>
TRS = TOP ROUGH SLAB	CH = CLEAR HEIGHT	BL = BOTTOM LEVEL	
A = AREA	TLP = TOP LEVEL PARAPETE		
P = PERIMETER	BLI = BOTTOM LEVEL LINTEL		
REFERENCE DOCUMENT			
09			
08			
07			
06			
05			
04			
03			
02	31/03/2020	DSM	BACKGROUND UPDATED TO ISSUE 4
01	06/03/2020	ACJ	ISSUED FOR TENDER
INDEX	DATE	DRAWN	CHECKED
			MODIFICATION

OVERVIEW:

OVERVIEW

MILL SITE ±0.00m = 75.15 AOD (above ordnance datum)

PLANNER

BHM INGENIEURE

Evans & Langford LLP

Quorum CONSULTING ENGINEERS

R Plant

entran

PROJECT	WEPA UK BRIDGEND LIGHTING			<div></div>
CONTENT OF PLAN	SITE ILLUMINATION PLAN			
PHASE	RFT			
PROJECT NO.	119003	SCALE	1:800	DRAWN
PLAN NO.	53201_ELT_8043	INDEX	02	CHECKED
PLAN NO. EXT.				DATE
				03.03.2020
				SIZE
				A1
BHM INGENIEURE - ENGINEERING & CONSULTING GMBH Runastraße 90, 6800 Feldkirch, Austria, Telefon +43 / 5522 / 46101 Fax +43 / 5522 / 46104, office@bhm-ing.com, www.bhm-ing.com				
<div></div>				