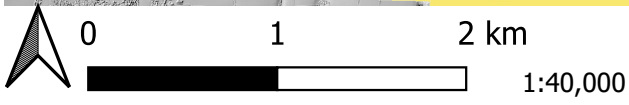


\*PIPELINES\*  
 GAS FROM A DAMAGED OR OIL GAS PIPELINE  
 COULD CAUSE AN EXPLOSION OR FIRE  
 OTHER SERVICES (MOTOR VEHICLES  
 ARE NOT ALLOWED TO BE IN THESE  
 PROXIMITY TO THESE AREAS  
 THE DEPTH OF  
 PIPELINES ARE CLOSE TOGETHER ONLY ONE  
 MAY BE CHARTED. MARINERS SHOULD NOT  
 ASSUME OF TRAIL IN THE VICINITY OF A  
 PIPELINE THE MAIN FOR PROTECTION OF  
 DAMAGE IS CAUSED.



# KML 10-276 Overview of Marine Operations

## Legend

- Ledwoods Quay Work Area
- Work Area (Berth 1 SHLNG)
- Pembroke Port Work Area
- Marine Movements**
- Ledwoods Quay - Pembroke Port
- Out of Port - Pembroke Dock
- Pembroke Dock - SHLNG Berth 1
- SHLNG Berth 1 - Ledwoods Quay