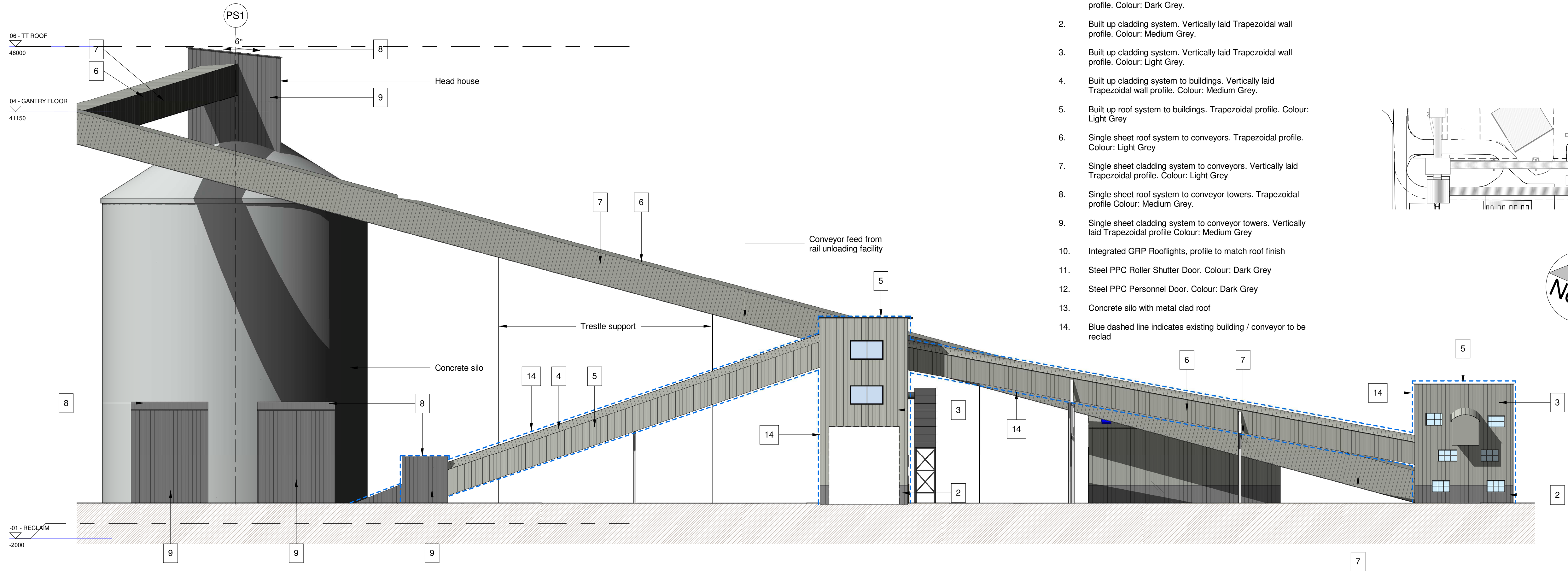


Notes

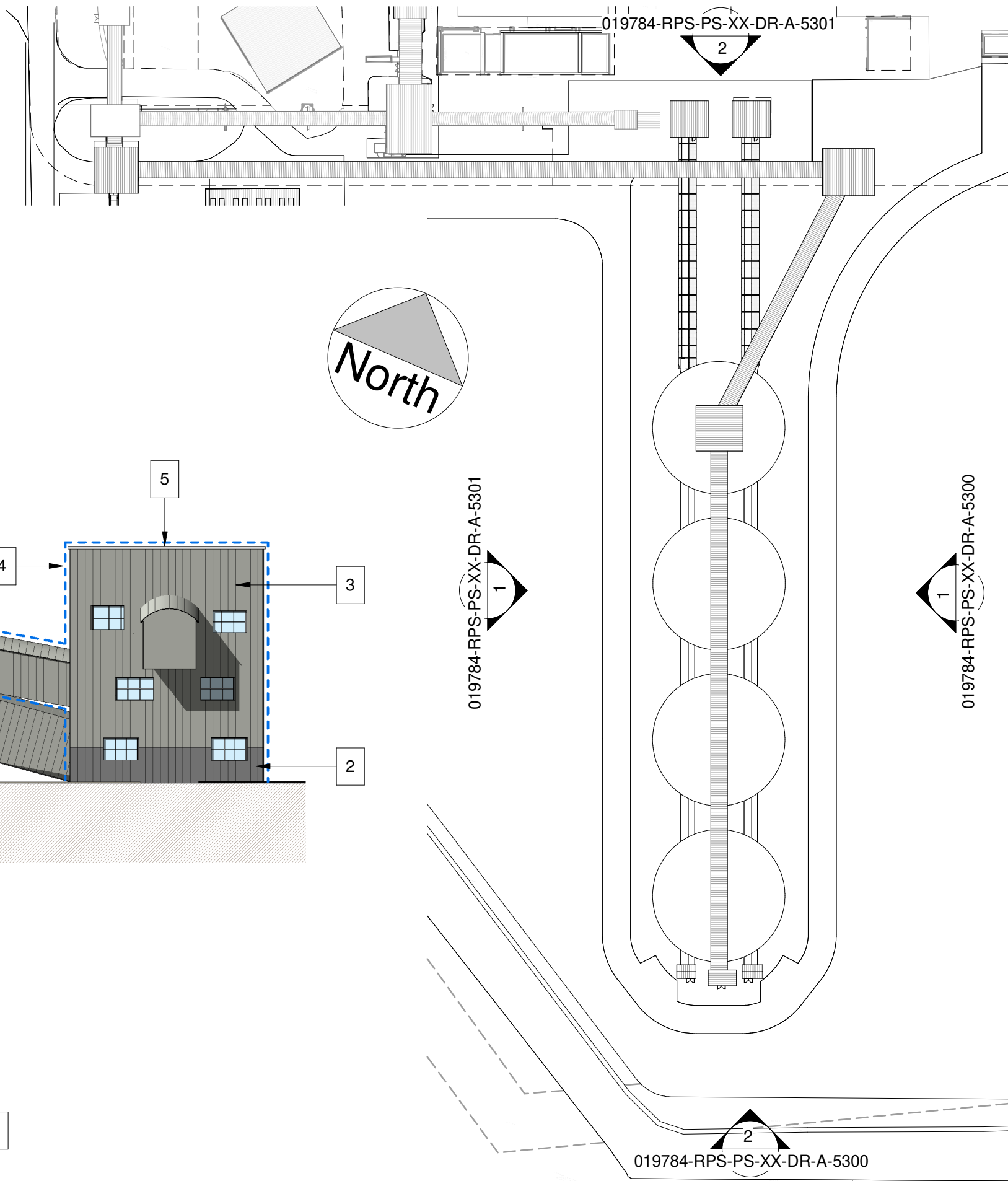
1. This drawing has been prepared in accordance with the scope of RPS's appointment with its client and is subject to the terms and conditions of that appointment. RPS accepts no liability for any use of this document other than by its client and only for the purposes for which it was prepared and provided.
2. If received electronically it is the recipient's responsibility to print to correct scale. Only written dimensions should be used.
3. This drawing should be read in conjunction with all other relevant drawings and specifications.

KEY:

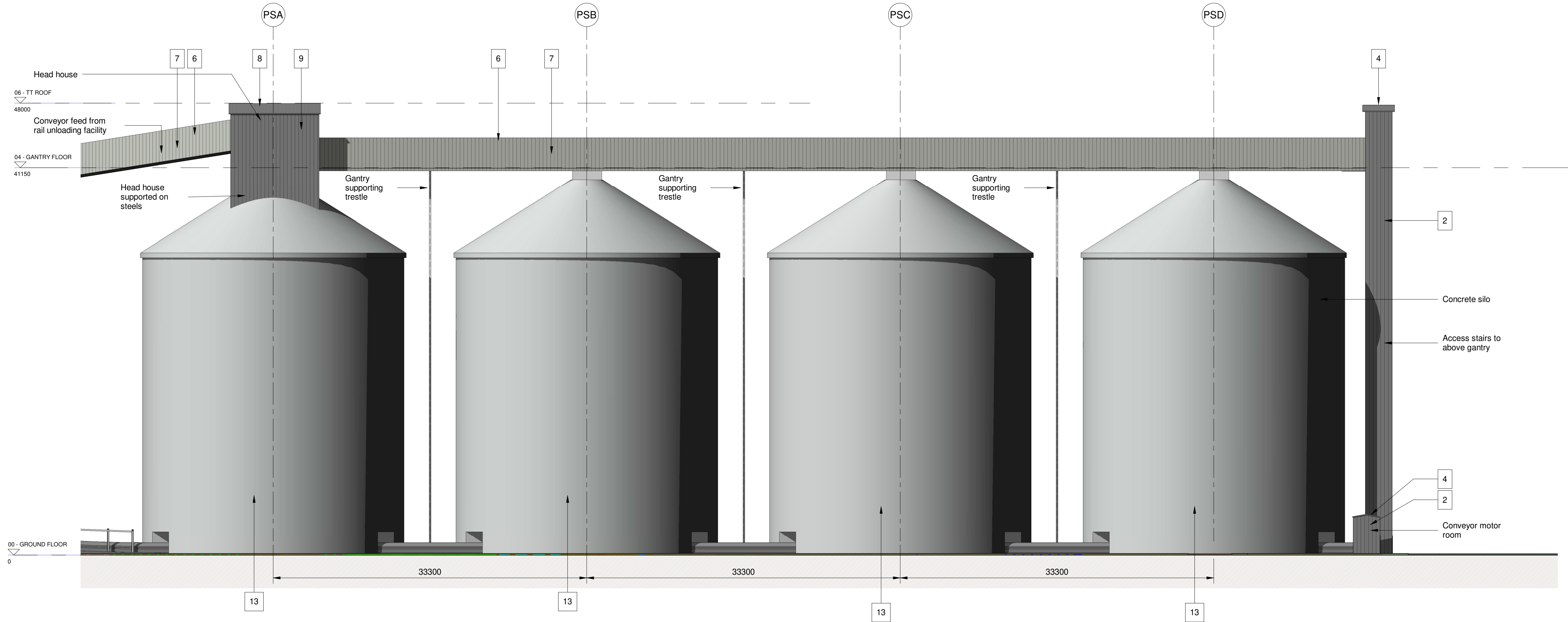
1. Built up cladding system. Vertically laid Trapezoidal wall profile. Colour: Dark Grey.
2. Built up cladding system. Vertically laid Trapezoidal wall profile. Colour: Medium Grey.
3. Built up cladding system. Vertically laid Trapezoidal wall profile. Colour: Light Grey.
4. Built up cladding system to buildings. Vertically laid Trapezoidal wall profile. Colour: Medium Grey.
5. Built up roof system to buildings. Trapezoidal profile. Colour: Light Grey
6. Single sheet roof system to conveyors. Trapezoidal profile. Colour: Light Grey
7. Single sheet cladding system to conveyors. Vertically laid Trapezoidal profile. Colour: Light Grey
8. Single sheet roof system to conveyor towers. Trapezoidal profile Colour: Medium Grey.
9. Single sheet cladding system to conveyor towers. Vertically laid Trapezoidal profile Colour: Medium Grey
10. Integrated GRP Rooflights, profile to match roof finish
11. Steel PPC Roller Shutter Door. Colour: Dark Grey
12. Steel PPC Personnel Door. Colour: Dark Grey
13. Concrete silo with metal clad roof
14. Blue dashed line indicates existing building / conveyor to be reclad



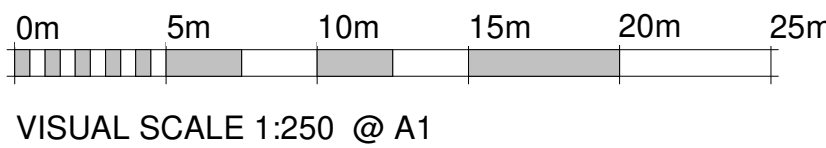
2 Proposed South-East Elevation
1 : 250



4 Elevation Sheet 2 Key Plan
1 : 1000



1 Proposed South-West Elevation
1 : 250



P05	Drawing revised and updated to remove all references of the lorry unloading facility and associated conveyors and towers	PBR	TFH	04/02/20
P04	Drawing revised and updated to show silos relocated to 5m distance between units as clients request, site models revised to reflect new topographical survey	PBR	TFH	12/09/19
P03	Drawing revised and updated to show material finishes	PBR	TFH	01/08/19
P02	Primary storage facility revised to show 4no silos in line as shown as clients comments and requests	PBR	TFH	28/06/19
P01	Initial Issue	PBR	TFH	21/05/19
Rev	Description	By	Ckd	Date



Suite D10, Josephs Well, Hanover Walk
Leeds, West Yorkshire LS3 1AB, United Kingdom
T:0113 220 6190 Expsnewark@rpsgroup.com



Project Simec Uskmouth Power Station
Conversion SUP

Title Proposed Primary Storage
Elevations Sheet 2 of 2

Status	Scale @ A1	Date Created
Preliminary	As indicated	03/05/19
Task Team Manager	Information Author	Task Information Manager
TFH	BC	TFH

Document Number
019784-RPS-PS-XX-DR-A-5301

Project Code - Originator - Zone - Level - Type - Role - Drawing Number	Suitability	Revision
RPS Project Number NK019784	S0	P05
rpsgroup.com		