

Ordnance Survey © Crown Copyright 2020. All rights reserved. Licence number 100022432



LEGEND

— ENVIRONMENTAL PERMIT BOUNDARY

Rev	Date	Details	Chkd
-----	------	---------	------

Environmental Compliance Ltd.
Unit G1
The Willowford
Main Avenue
Treforest Industrial Estate
Pontypridd
CF37 5YL
Tel: 01443 841760
Fax: 01443 841761
Email: info@ecf.world
Web: www.ecf.world

Client



Date	Scale	Drawn by	Checked by	Approved by
18/05/2021	1:10K @ A4	GTB	SJ	SJ

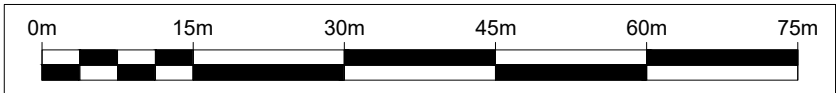
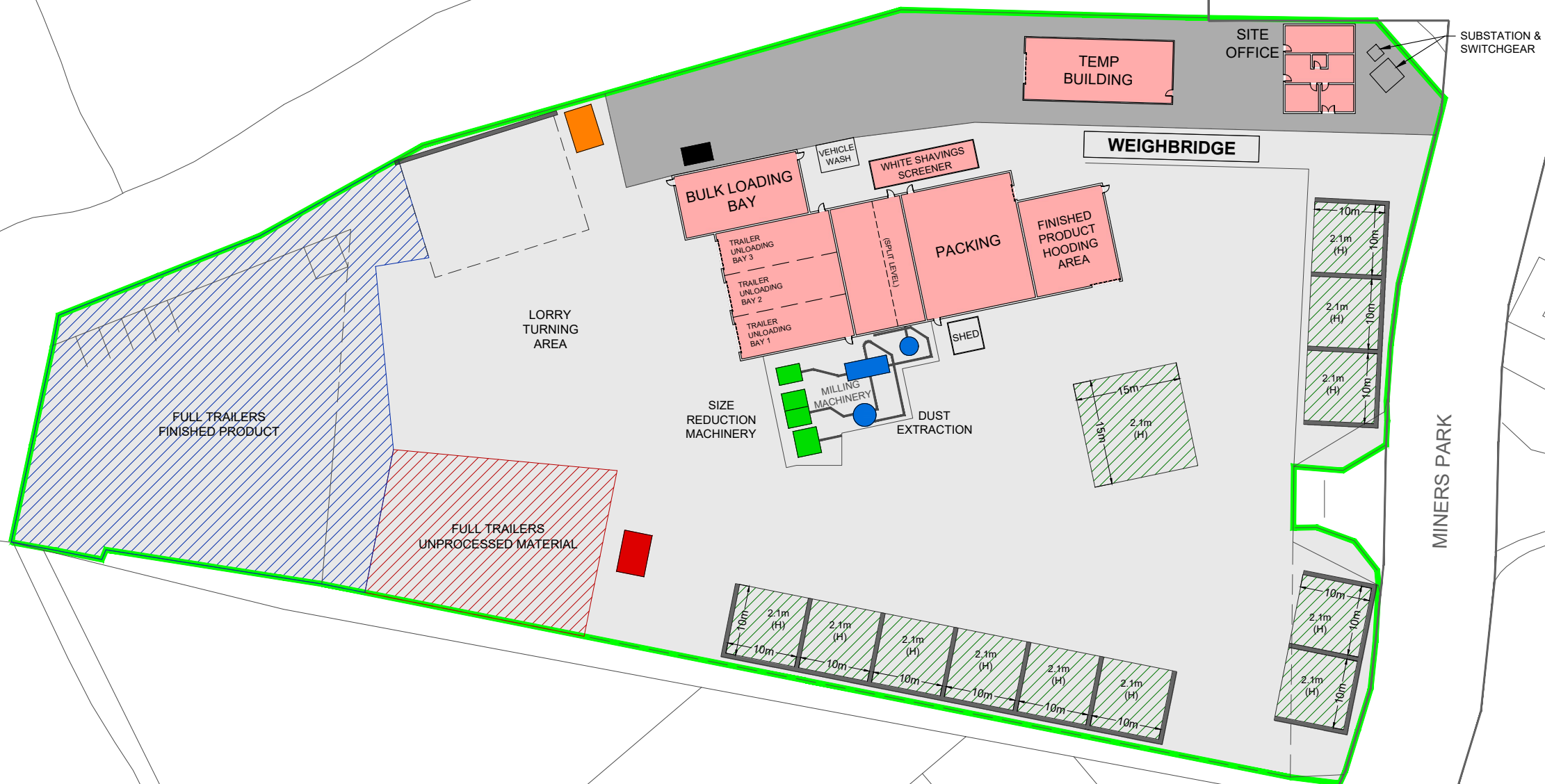
Drawing Status **FINAL DRAWING**

Project Title
ENVIRONMENTAL PERMIT APPLICATION
PLATTS AGRICULTURE LIMITED
MINERS PARK, LLAY INDUSTRIAL ESTATE
LLAY
WREXHAM

Drawing Title
SITE LOCATION PLAN

Drawing Number	Rev
ECL.088.01.01-01	-

- LEGEND**
- ENVIRONMENTAL PERMIT BOUNDARY
 - CONCRETE
 - HARDSTANDING
 - BUILDINGS
 - TRAILERS CONTAINING UNPROCESSED MATERIAL
 - TRAILERS CONTAINING FINISHED PRODUCT
 - BALED FINISHED PRODUCT
 - BUNDED RED DIESEL TANK
 - NON-CONFORMING WASTE QUARANTINE AREA
 - EXTRACTION TRAILER - 4.4m(L) X 2.55m(W)



Rev	Date	Details	Chkd
-----	------	---------	------

Environmental Compliance Ltd.
Unit G1
The Willowford
Main Avenue
Treforest Industrial Estate
Pontypridd,
CF37 5YL

ecl
Tel: 01443 841760
Fax: 01443 841761
Email: info@ecd.world
Web: www.ecd.world



Date	Scale	Drawn by	Checked by	Approved by
18/05/2021	1:750 @ A3	GTB	SJ	SJ

Drawing Status

FINAL DRAWING

Project Title
ENVIRONMENTAL PERMIT APPLICATION
PLATTS AGRICULTURE LIMITED
MINERS PARK, LLAY INDUSTRIAL ESTATE
LLAY
WREXHAM

Drawing Title
SITE LAYOUT PLAN

Drawing Number	Rev
ECL.088.01.01-02	-



Ordnance Survey © Crown Copyright 2020. All rights reserved. Licence number 100022432

N

LEGEND

- ENVIRONMENTAL PERMIT BOUNDARY
- 100m OFFSET BOUNDARY
- DOMESTIC DWELLINGS
- COMMERCIAL / INDUSTRIAL PREMISES
- GRASS / SHRUB
- TREES / WOODS
- ROAD FEATURES
- SURFACE WATER FEATURES

Met Office

HOURLY MEAN WIND ROSE FOR HAWARDEN AIRPORT

NR: 3342 E 3347 N
SEASON: ANNUAL

ALTITUDE: 11 metres AML
Period of data: Jan 2010 - Dec 2019

87,227 OBSERVATIONS
0.9% CALM
0.0% VARIABLE

1-10 11-16 17-27 28-33 >33
Hourly mean wind speed (m/s)

© Crown Copyright Met Office 2020

Rev	Date	Details	Chkd
1	18/05/2021	Scale 1:7.5K @ A3	GTB
2		Checked by SJ	
3		Approved by SJ	

FINAL DRAWING

Project Title
ENVIRONMENTAL PERMIT APPLICATION
PLATTS AGRICULTURE LIMITED
MINERS PARK, LLAY INDUSTRIAL ESTATE
LLAY
WREXHAM

Drawing Title
SENSITIVE RECEPTOR PLAN

Drawing Number
ECL.088.01.01-03

Rev
-

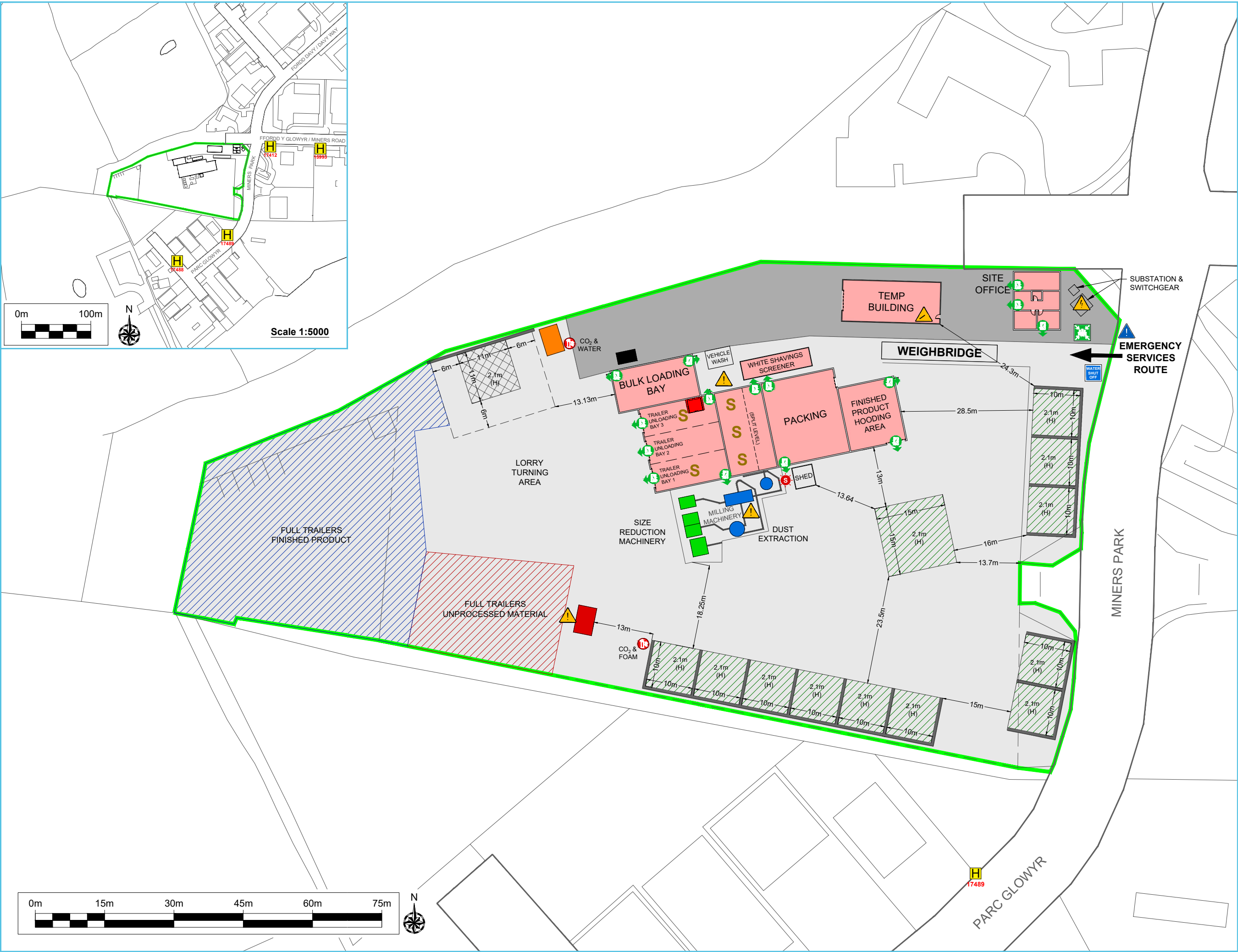
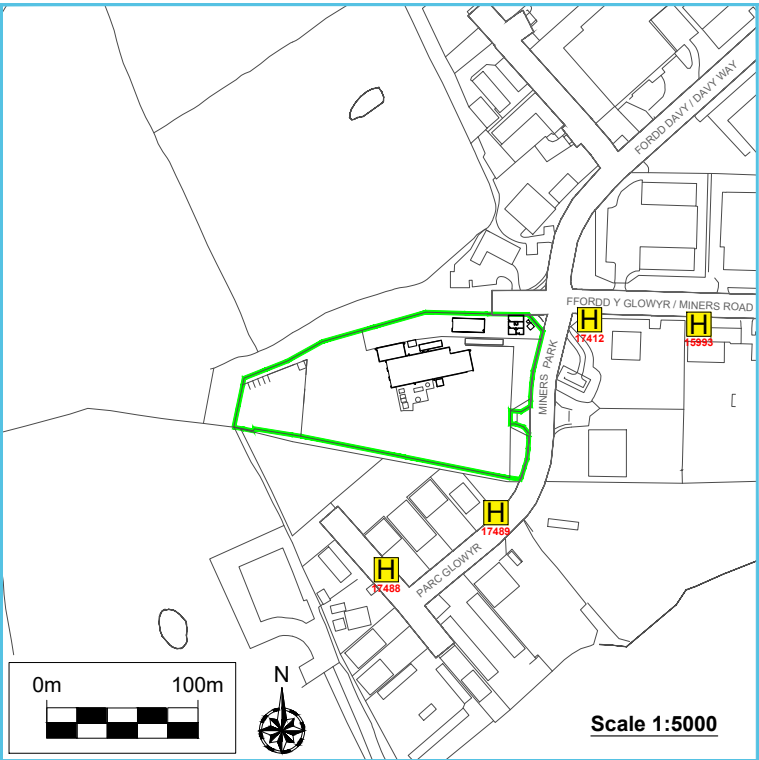
Environmental Compliance Ltd. **ecl.**

Unit G1
The Willowford
Main Avenue
Treforest Industrial Estate
Pontypridd,
CF37 5YL

Tel: 01443 841760
Fax: 01443 841761
Email: info@ec.world
Web: www.ec.world

Client

PLATTS
AGRICULTURE



Ordnance Survey © Crown Copyright 2020. All rights reserved. Licence number 100022432

LEGEND


- ENVIRONMENTAL PERMIT BOUNDARY
- CONCRETE
- HARDSTANDING
- BUILDINGS
- TRAILERS CONTAINING UNPROCESSED MATERIAL
- TRAILERS CONTAINING FINISHED PRODUCT
- BALED FINISHED PRODUCT
- BUNDED RED DIESEL TANK
- NON-CONFORMING WASTE QUARANTINE AREA
- EXTRACTION TRAILER - 4.4m(L) X 2.55m(W)
- FPP QUARANTINE AREA
- IGNITION SOURCE - GAS BOTTLES
- COSHH STORAGE
- HIGH LEVELS OF SAWDUST
- LOCATION OF FIRE PREVENTION PLAN
- ELECTRICAL SHUT OFF POINT
- WATER SHUT OFF POINT
- FIREWATER CONTAINMENT EQUIPMENT
- FIRE SUPPRESSION SYSTEM
- FIRE EXTINGUISHER
- FIRE EXIT
- EMERGENCY ASSEMBLY POINT
- FIRE HYDRANT

NOTE
FOR INTERNAL FIRE PREVENTION & MITIGATION INFO
SEE DRAWING ECL.088.01.01-05

Rev	Date	Details	Chkd
18/05/2021	18/05/2021	1:750 @ A3	GTB

Environmental Compliance Ltd.
Unit G1
The Willowford
Main Avenue
Treforest Industrial Estate
Pontypridd,
CF37 5YL

ecl.
Tel: 01443 841760
Fax: 01443 841761
Email: info@ecd.world
Web: www.ecd.world

Client

EST 1973
PLATTS
AGRICULTURE

Date	Scale	Drawn by	Checked by	Approved by
18/05/2021	1:750 @ A3	GTB	SJ	SJ













Drawing Status
FINAL DRAWING

Project Title
ENVIRONMENTAL PERMIT APPLICATION
PLATTS AGRICULTURE LIMITED
MINERS PARK, LLAY INDUSTRIAL ESTATE
LLAY
WREXHAM

Drawing Title
FIRE PREVENTION AND MITIGATION PLAN

Drawing Number	Rev
ECL.088.01.01-04	-

LEGEND

-  COSHH STORAGE
-  HIGH LEVELS OF SAWDUST
-  FIREWATER CONTAINMENT EQUIPMENT
-  FIRE SUPPRESSION SYSTEM
-  FIRE ALARM BREAK GLASS
-  FIRE EXTINGUISHER
WATER = W
POWDER = P
CARBON DIOXIDE = CO₂
FOAM = F
-  FIRE HOSE
-  AIR RECEIVER
-  FIRE EXIT
-  SELF CLOSING DOOR
-  FIRE DOOR
-  TELEPHONE POINT

NOTE

FOR EXTERNAL FIRE PREVENTION & MITIGATION INFO
SEE DRAWING ECL.088.01.01-04

Rev	Date	Details	Chkd
-----	------	---------	------

Environmental Compliance Ltd.
Unit G1
The Willowford
Main Avenue
Treforest Industrial Estate
Pontypridd,
CF37 5YL

ecl.
Tel: 01443 841760
Fax: 01443 841761
Email: info@ecd.world
Web: www.ecd.world

Client



Date	Scale	Drawn by	Checked by	Approved by
18/05/2021	1:200 @ A3	GTB	SJ	SJ

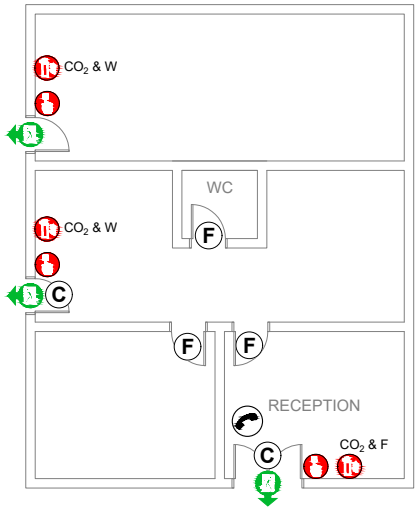
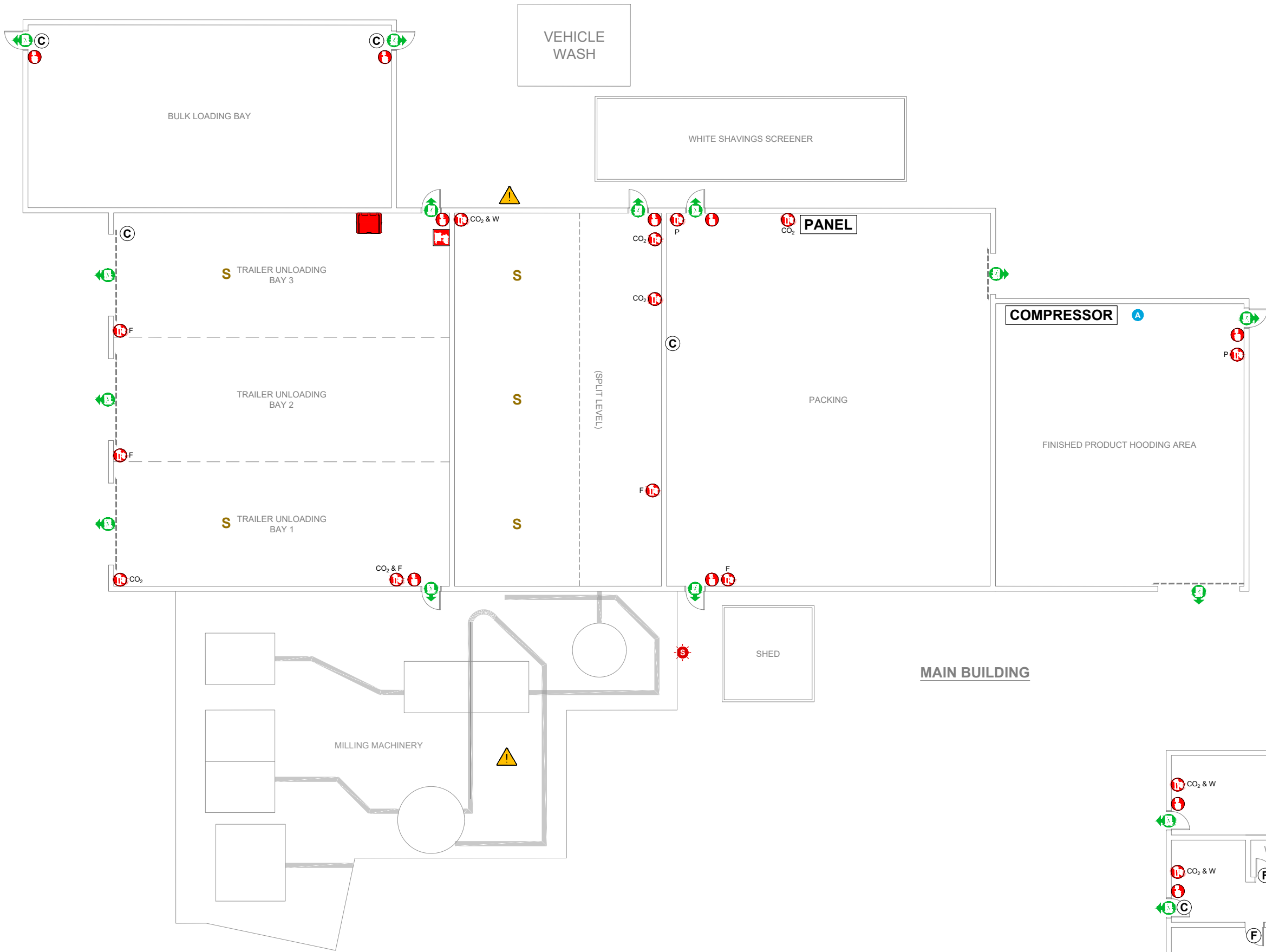
Drawing Status

FINAL DRAWING

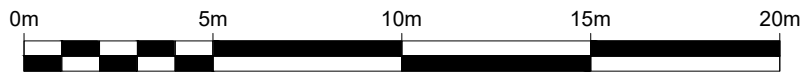
Project Title
ENVIRONMENTAL PERMIT APPLICATION
PLATTS AGRICULTURE LIMITED
MINERS PARK, LLAY INDUSTRIAL ESTATE
LLAY
WREXHAM

Drawing Title
FIRE PREVENTION AND MITIGATION PLAN
BUILDINGS

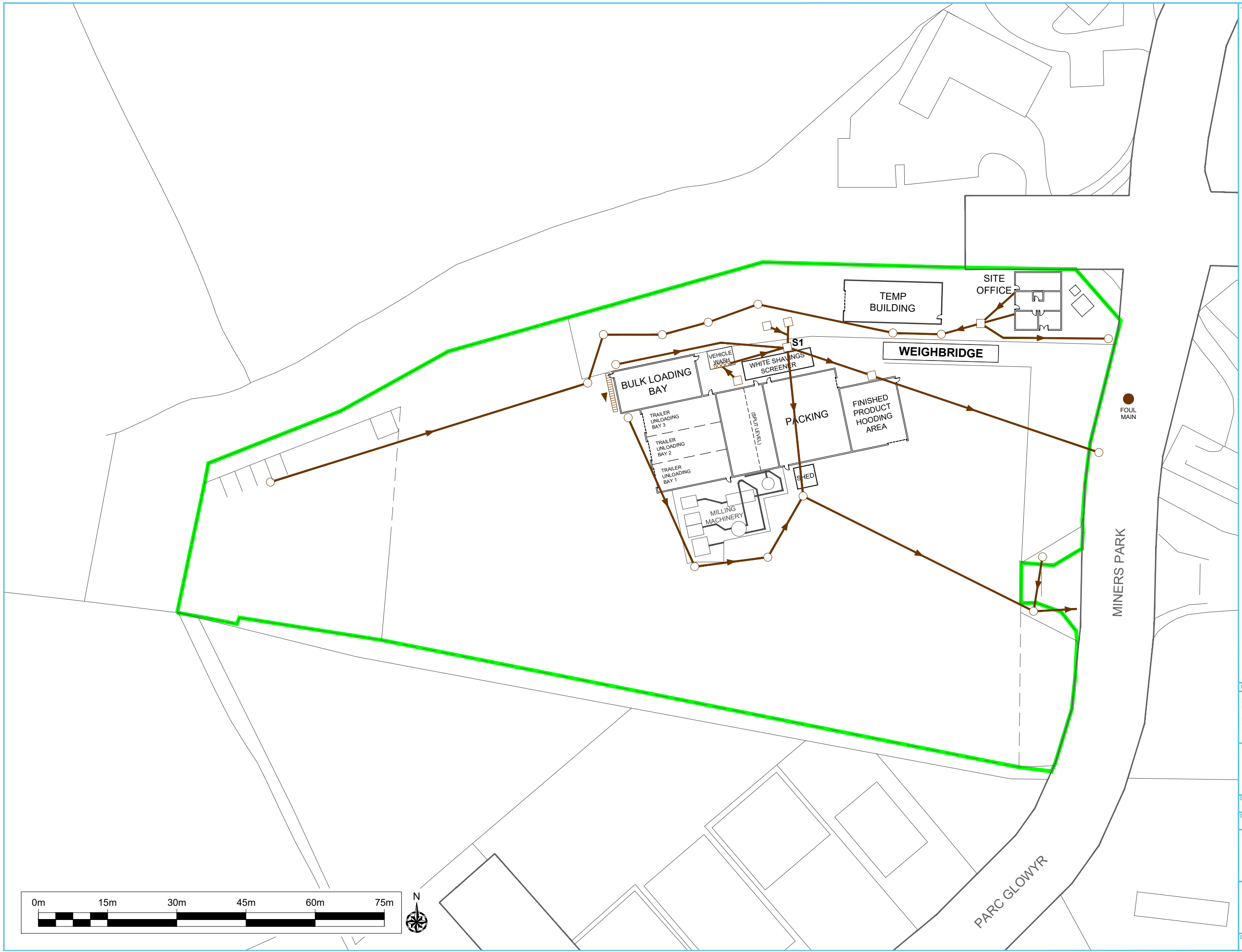
Drawing Number	Rev
ECL.088.01.01-05	-



SITE OFFICE



- LEGEND**
- ENVIRONMENTAL PERMIT BOUNDARY
 - FOUL DRAINAGE
 - MANHOLE
 - INSPECTION COVER
 - INTERCEPTOR PIT
 - ACO / ECO DRAIN
 - S1** EMISSION POINT TO SEWER



Rev	Date	Details	Chkd
-----	------	---------	------

Environmental Compliance Ltd.
Unit G1
The Willowford
Main Avenue
Treforest Industrial Estate
Pontypridd,
CF37 5YL

ecl.
Tel: 01443 841760
Fax: 01443 841761
Email: info@ec.world
Web: www.ec.world



Date	Scale	Drawn by	Checked by	Approved by
18/05/2021	1:750 @ A3	GTB	SJ	SJ

Drawing Status

FINAL DRAWING

Project Title

ENVIRONMENTAL PERMIT APPLICATION
PLATTS AGRICULTURE LIMITED
MINERS PARK, LLAY INDUSTRIAL ESTATE
LLAY
WREXHAM

Drawing Title

DRAINAGE PLAN

Drawing Number	Rev
ECL.088.01.01-06	-