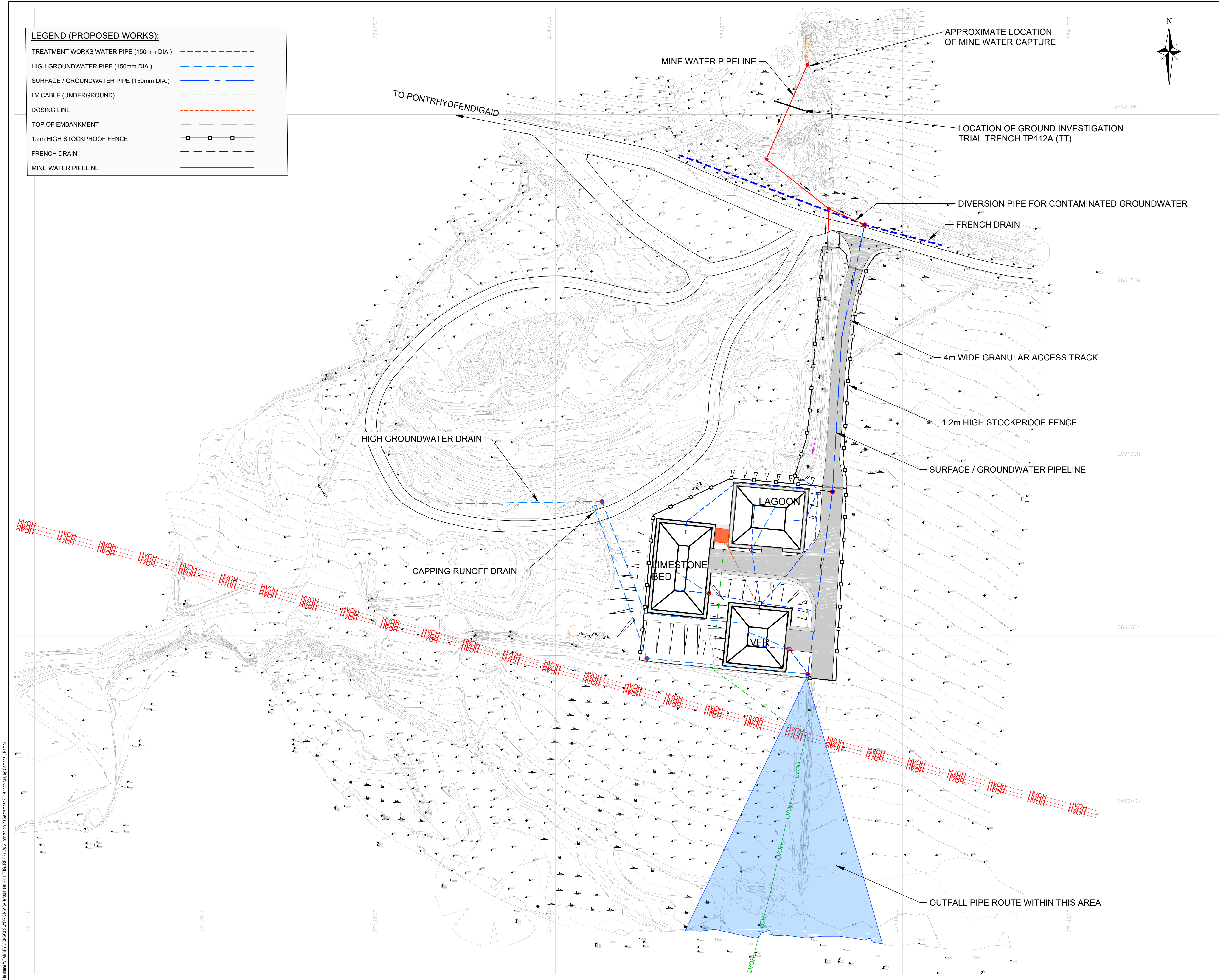


File name: W:\ABBEY CONSOLS\WORKING\CAD\0041881-001.FIGURE 09.DWG, printed on 20 September 2019 14:24:34, by Campbell Patrick



DO NOT SCALE

NOTES

1. ALL LEVELS SHOWN ARE IN METRES (AOD) AND ARE TAKEN FROM THE TOPOGRAPHICAL SURVEY.
2. ALL DIMENSIONS ARE IN MILLIMETRES UNLESS NOTED OTHERWISE.
3. THIS DRAWING TO BE READ IN CONJUNCTION WITH WSP DRAWINGS 70041881-002, 70041881-003 AND 70041881-04.

EXISTING SERVICES KEY:

HIGH VOLTAGE OVERHEAD
LOW VOLTAGE OVERHEAD

P01	09/09/2019	PAC	FIRST ISSUE	KB	PC
REV	DATE	BY	DESCRIPTION	CHK	APP

DRAWING STATUS:	S2 - FOR INFORMATION
-----------------	----------------------

wsp

Severn House, Lime Kiln Close, Stoke Gifford, BS34 8SQ, UK
T+ 44 (0) 117 906 2300
wsp.com

CLIENT:

Cyfoeth Naturiol Cymru
Natural Resources Wales

SITE/PROJECT:

ABBAY CONSOLS METAL MINE
REMEDIATION PROJECT

TITLE:

MINE WATER TRANSFER AND ACCESS
TO THE TREATMENT AREA

SCALE @ A1:	CHECKED:	APPROVED:
1:500	KB	PC

PROJECT NO:	DESIGNED:	DRAWN:	DATE:
70041881	KB	PAC	September 19

DRAWING NO:	REV:
70041881-001.(FIGURE 09)	P01

© WSP UK Ltd