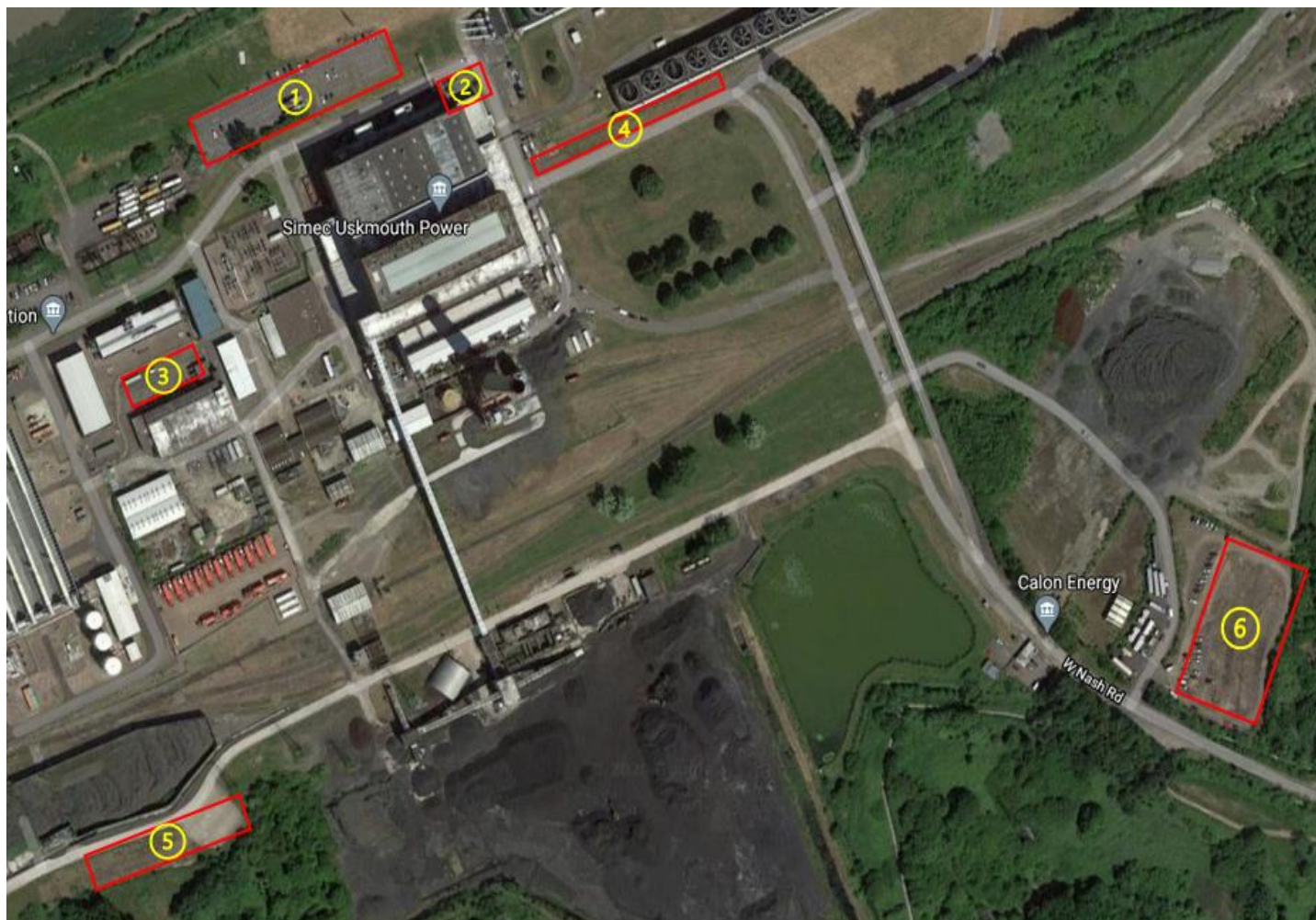


Uskmouth Power Station - Parking Facilities



Main Parking Facilities:

Designated Parking (Tarmac)

1. Main Car Park - 115 spaces
2. Main Admin Block – 12 spaces
3. Engineering/Stores – 20 spaces

Outage Car Parking (Hardcore)

4. Cooling Towers – 30 spaces (informal)
5. West Laydown Area – 40 spaces (informal)
6. East Laydown area – 100 spaces (informal)

This map is not to scale

Drawing Reference:

SUP Drawing 001 Parking Facilities

Date 22/10/2020