

LEGEND

— ENVIRONMENTAL PERMIT BOUNDARY

Rev	Date	Details	Chkd
-----	------	---------	------

Environmental Compliance Ltd.
Unit G1
The Willowford
Main Avenue
Treforest Industrial Estate
Pontypridd,
CF37 5YL

ecl
Tel: 01443 841760
Fax: 01443 841761
Email: info@ecd.world
Web: www.ecd.world

Client



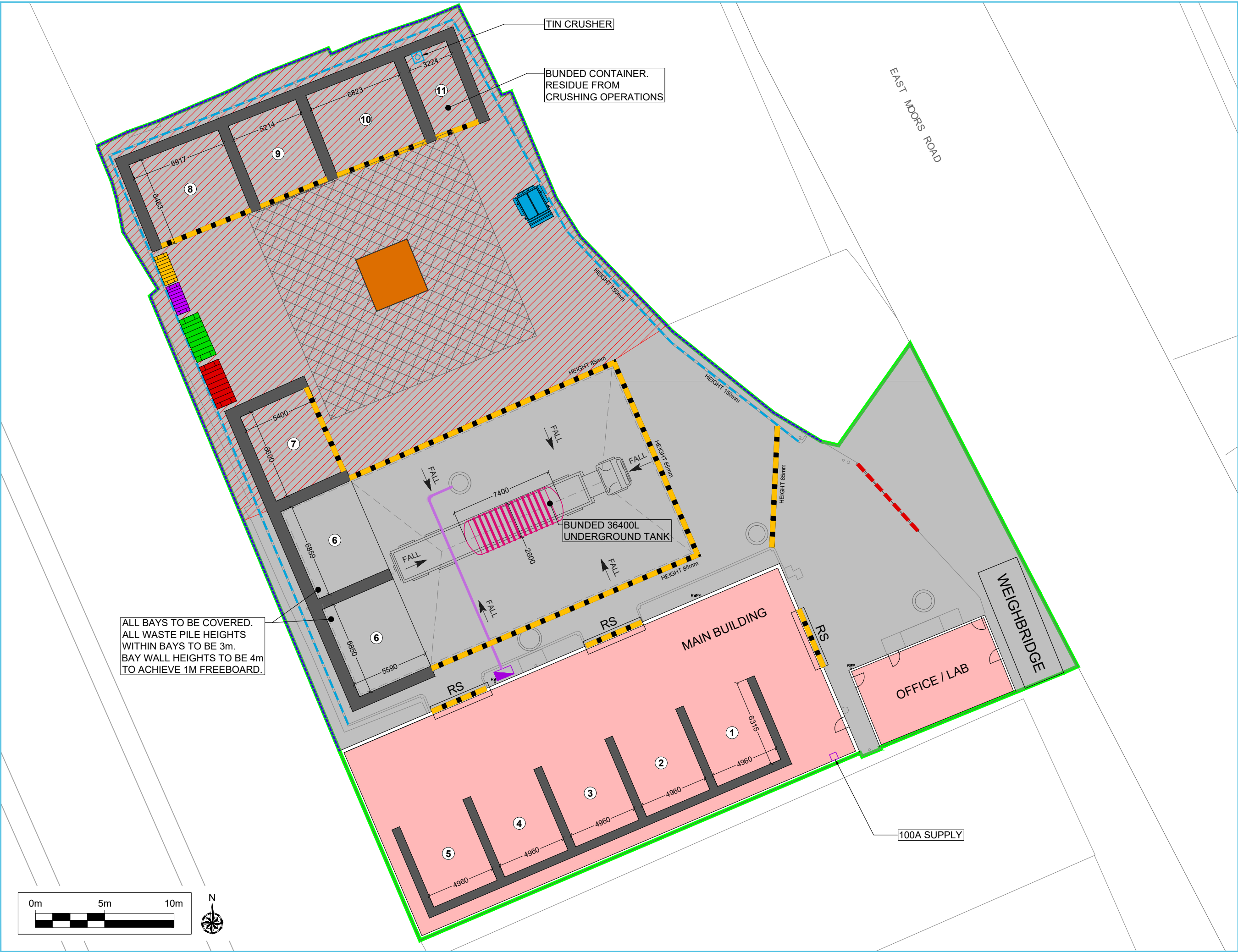
Date	Scale	Drawn by	Checked by	Approved by
03/08/2021	1:10K @ A4	GTB	SJ	SJ

Drawing Status: **FINAL**

Project Title
ENVIRONMENTAL PERMIT APPLICATION
FORWARD WASTE MANAGEMENT LIMITED
HAZARDOUS WASTE TRANSFER STATION
EAST MOORS ROAD
CARDIFF, CF24 5EE

Drawing Title
SITE LOCATION PLAN

Drawing Number	Rev
ECL.010.02.01-01	1



LEGEND

- ENVIRONMENTAL PERMIT BOUNDARY
- EXTERNAL CONCRETE HARDSTANDING
- BUILDINGS
- AREA COVERED BY ECL.010.02.01/FPP
- 6m SEPARATION DISTANCE
- LOCKABLE ENTRANCE GATE
- 150mm IMPERMEABLE PERIMETER KERB WALL
- BOUNDARY PERIMETER OF METAL CLADDING AND CONCRETE BLOCK CONSTRUCTION
- FIRE RESISTANT WASTE STORAGE BAY WALL
- SLEEPING POLICEMEN
- CONTROL KIOSK FOR ELECTRICAL SUPPLY TO PUMP
- DUCT FOR ELECTRICITY SUPPLY CABLE
- HOT LOAD QUARANTINE (4m x 4m x 4m H)
- WEEE STORAGE - NON-HAZARDOUS
- WEEE STORAGE - HAZARDOUS
- FRONT END LOADING CONTAINER STORING CRUSHED METAL DRUMS
- BATTERY STORES
- OXIDISING SOLIDS LIQUID STORES
- ① BAY 1
- ② BAY 2
- ③ BAY 3
- ④ BAY 4
- ⑤ NON-CONFORMING WASTE QUARANTINE
- ⑥ INBOUND WASTE RECEPTION / TANKER BULKING
- ⑦ EMPTY PACKAGING
- ⑧ BAY 8
- ⑨ AEROSOLS (CAGED BAY)
- ⑩ BAY 10
- ⑪ TIN CRUSHER BAY

Rev	Date	Details	Chkd
03/08/2021	1:250 @ A3	Drawn by GTB	Checked by SJ

Environmental Compliance Ltd.
Unit G1
The Willowford
Main Avenue
Treforest Industrial Estate
Pontypridd,
CF37 5YL

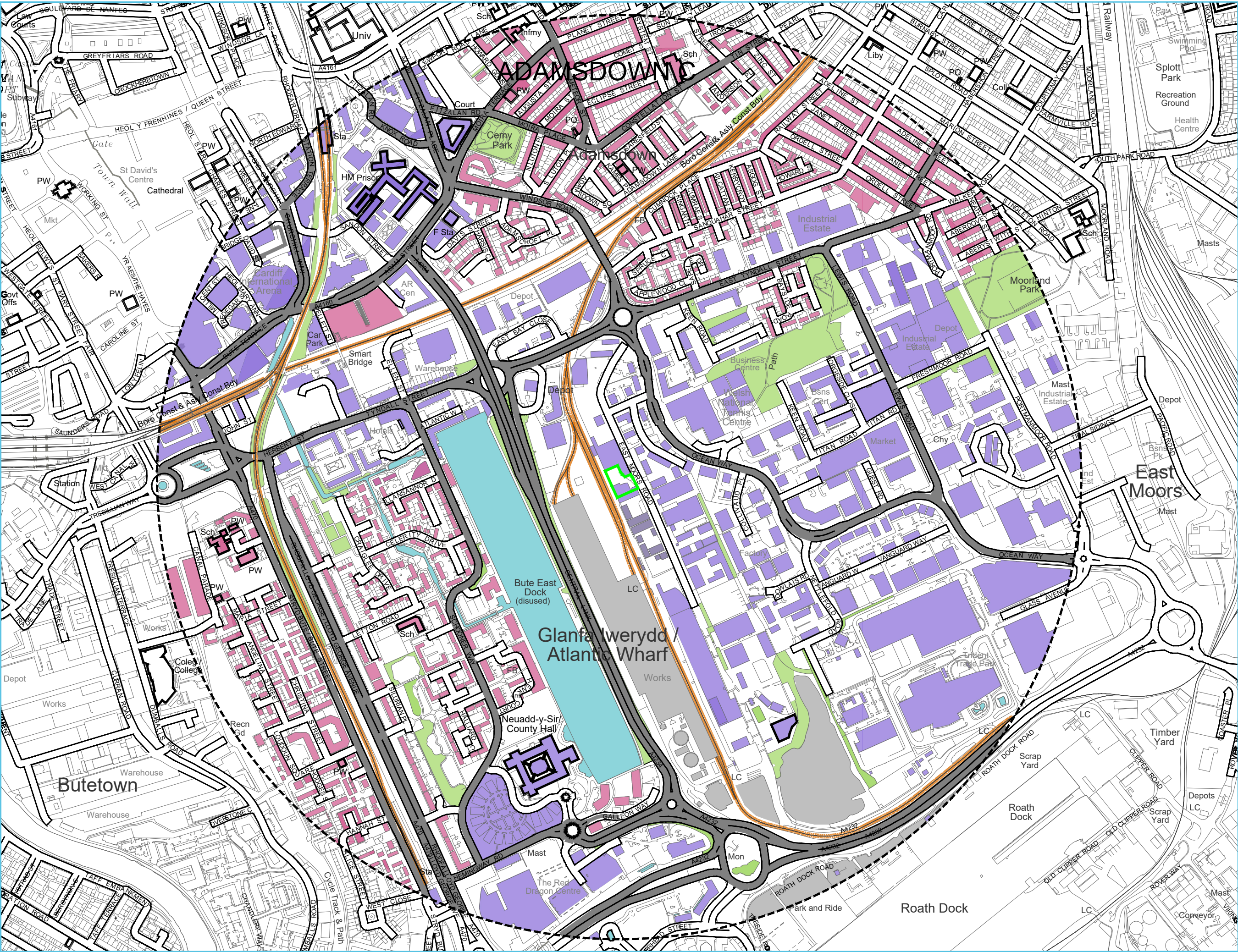
forward
waste management

Project Title
ENVIRONMENTAL PERMIT APPLICATION
FORWARD WASTE MANAGEMENT LIMITED
HAZARDOUS WASTE TRANSFER STATION
EAST MOORS ROAD
CARDIFF. CF24 5EE

Drawing Title
SITE LAYOUT PLAN

Drawing Number
ECL.010.02.01-02

Rev
2



N

LEGEND

- ENVIRONMENTAL PERMIT BOUNDARY
- 1000m OFFSET BOUNDARY
- DOMESTIC DWELLINGS
- AREAS OF OPEN SPACE / PLAYING FIELDS
- COMMERCIAL PREMISES
- INDUSTRIAL PREMISES
- ROAD FEATURES
- RAILWAY FEATURES
- SURFACE WATER FEATURES

HOURLY MEAN WIND ROSE FOR ST ATHAN

Met Office

NO2: 2009-1, 1004 N
SEASON: ANNUAL

ALTITUDE: 40 METRES AML
Period of data: Jan 2008 - Dec 2017

Rev	Date	Details	Chkd
03/08/2021	Scale 1:7.5K @ A3	Drawn by GTB	Checked by SJ
Drawing Status			

FINAL

Project Title
ENVIRONMENTAL PERMIT APPLICATION
FORWARD WASTE MANAGEMENT LIMITED
HAZARDOUS WASTE TRANSFER STATION
EAST MOORS ROAD
CARDIFF, CF24 5EE

Drawing Title
SENSITIVE RECEPTOR PLAN

Drawing Number
ECL.010.02.01-03

Rev
1

Environmental Compliance Ltd. **ECL**

Unit G1
The Willowford
Main Avenue
Treforest Industrial Estate
Pontypridd, CF37 5YL

Tel: 01443 841760
Fax: 01443 841761
Email: info@ed.world
Web: www.ed.world

Client
forward
waste management



ALL BAYS TO BE COVERED.
ALL WASTE PILE HEIGHTS
WITHIN BAYS TO BE 3m.
BAY WALL HEIGHTS TO BE 4m
TO ACHIEVE 1M FREEBOARD.

LEGEND

- ENVIRONMENTAL PERMIT BOUNDARY
- EXTERNAL CONCRETE HARDSTANDING
- BUILDINGS
- AREA COVERED BY ECL.010.02.01/FPP
- 6m SEPARATION DISTANCE
- LOCKABLE ENTRANCE GATE
- 150mm IMPERMEABLE PERIMETER KERB WALL
- BOUNDARY PERIMETER OF METAL CLADDING AND CONCRETE BLOCK CONSTRUCTION
- FIRE RESISTANT WASTE STORAGE BAY WALL
- SLEEPING POLICEMEN
- CONTROL KIOSK FOR ELECTRICAL SUPPLY TO PUMP
- DUCT FOR ELECTRICITY SUPPLY CABLE
- HOT LOAD QUARANTINE (4m x 4m x 4m H)
- WEEE STORAGE - NON-HAZARDOUS
- WEEE STORAGE - HAZARDOUS
- FRONT END LOADING CONTAINER STORING CRUSHED METAL DRUMS
- BATTERY STORES
- OXIDISING SOLIDS LIQUID STORES
- 1 BAY 1
- 2 BAY 2
- 3 BAY 3
- 4 BAY 4
- 5 NON-CONFORMING WASTE QUARANTINE
- 6 INBOUND WASTE RECEPTION / TANKER BULKING
- 7 EMPTY PACKAGING
- 8 BAY 8
- 9 AEROSOLS (CAGED BAY)
- 10 BAY 10
- 11 TIN CRUSHER BAY
- FIRE ALARM BREAK GLASS
- FIRE EXTINGUISHER C = CO₂ P = POWDER
- FIRE EXIT
- FIRE ASSEMBLY POINT
- FIRE HYDRANT
- SPILL KIT
- EMERGENCY INFO PACK
- FIRE WATER CONTAINMENT EQUIPMENT STORAGE AREA
- EMERGENCY SERVICES BOX
- ROUTE OF EMERGENCY SERVICES

Rev	Date	Details	Chkd
03/08/2021	Scale 1:250 @ A3	Drawn by GTB	Checked by SJ

Environmental Compliance Ltd.
Unit G1
The Willowford
Main Avenue
Treforest Industrial Estate
Pontypridd,
CF37 5YL

forward
waste management

Client

Project Title
ENVIRONMENTAL PERMIT APPLICATION
FORWARD WASTE MANAGEMENT LIMITED
HAZARDOUS WASTE TRANSFER STATION
EAST MOORS ROAD
CARDIFF. CF24 5EE

Drawing Title
FIRE PREVENTION AND MITIGATION PLAN

Drawing Number
ECL.010.02.01-04

Rev
2



- LEGEND**
- ENVIRONMENTAL PERMIT BOUNDARY
 - IMPERMEABLE CONCRETE SURFACING
 - 150mm IMPERMEABLE PERIMETER KERB WALL
 - SLEEPING POLICEMEN
 - STORM DRAIN
 - FOUL DRAIN
 - COMBINED DRAIN
 - LINE DRAIN WITH RODDING ACCESS
 - CONTROL KIOSK FOR ELECTRICAL SUPPLY TO PUMP
 - DUCT FOR ELECTRICITY SUPPLY CABLE
 - STOP VALVE GEAR LOCATION

Rev	Date	Details	Chkd
Environmental Compliance Ltd. Unit G1 The Willowford Main Avenue Treforest Industrial Estate Pontypridd, CF37 5YL			
forward waste management			
Date 03/08/2021	Scale 1:250 @ A3	Drawn by GTB	Checked by SJ
Drawing Status FINAL			
Project Title ENVIRONMENTAL PERMIT APPLICATION FORWARD WASTE MANAGEMENT LIMITED HAZARDOUS WASTE TRANSFER STATION EAST MOORS ROAD CARDIFF, CF24 5EE			
Drawing Title DRAINAGE ARRANGEMENTS PLAN			
Drawing Number ECL.010.02.01-05			Rev 2