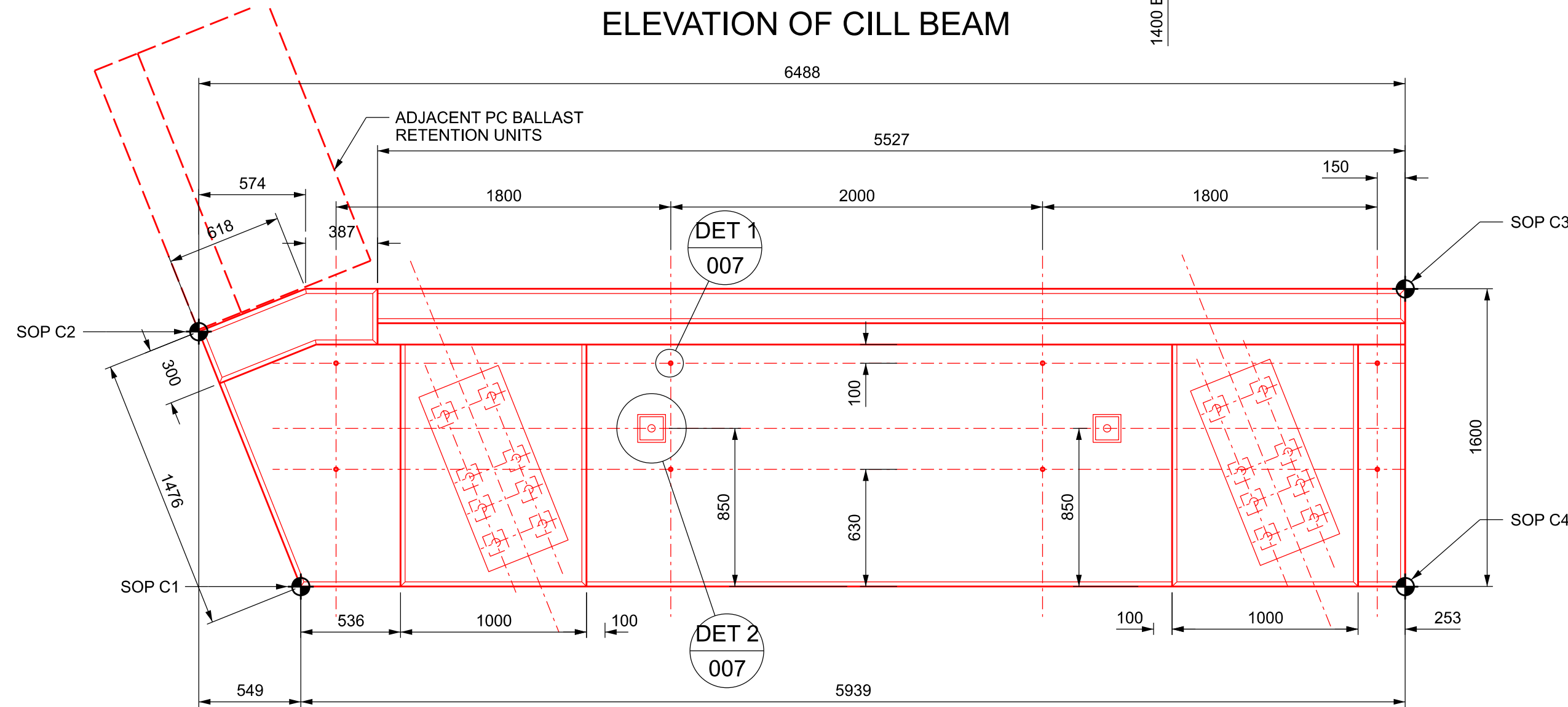
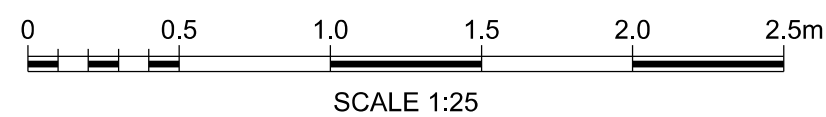


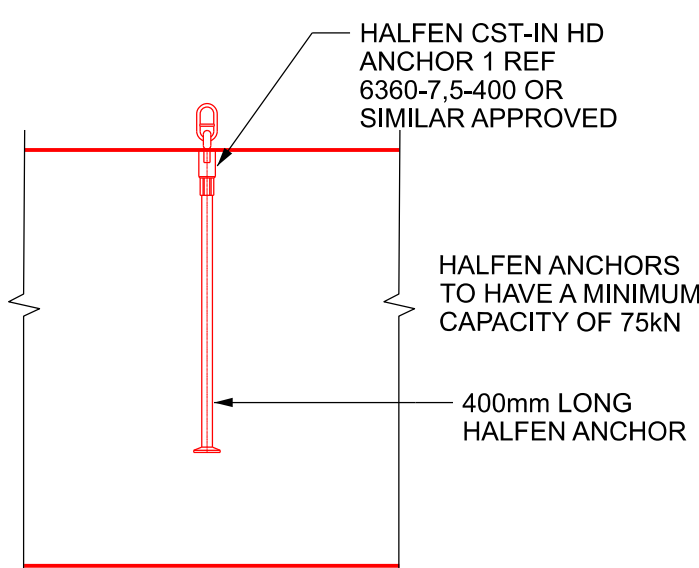
ELEVATION OF CILL BEAM



PLAN OF LOW MILEAGE CILL BEAM

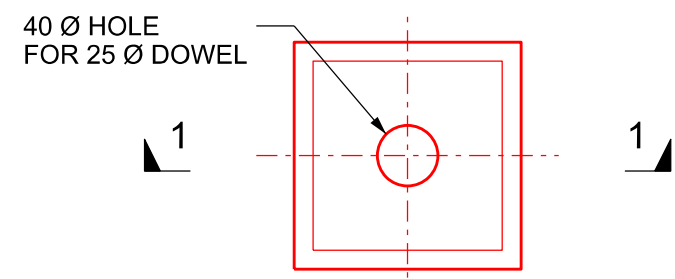
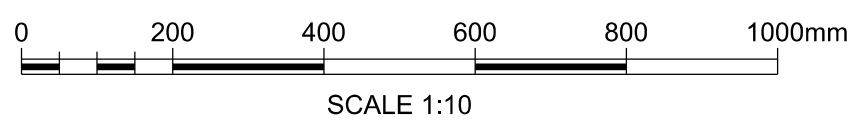


NOTE:  
WEIGHT TO BE ALLOWED FOR LIFTING -  
CILL BEAM UNIT WEIGHT IS 18.5  
TONNES (UNFACTORED)



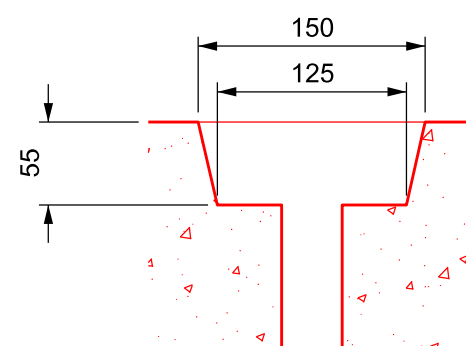
LIFTING LUG DETAIL 1

INDICATIVE DEHA SPHERICAL HEAD ANCHOR EMBEDMENT DETAIL

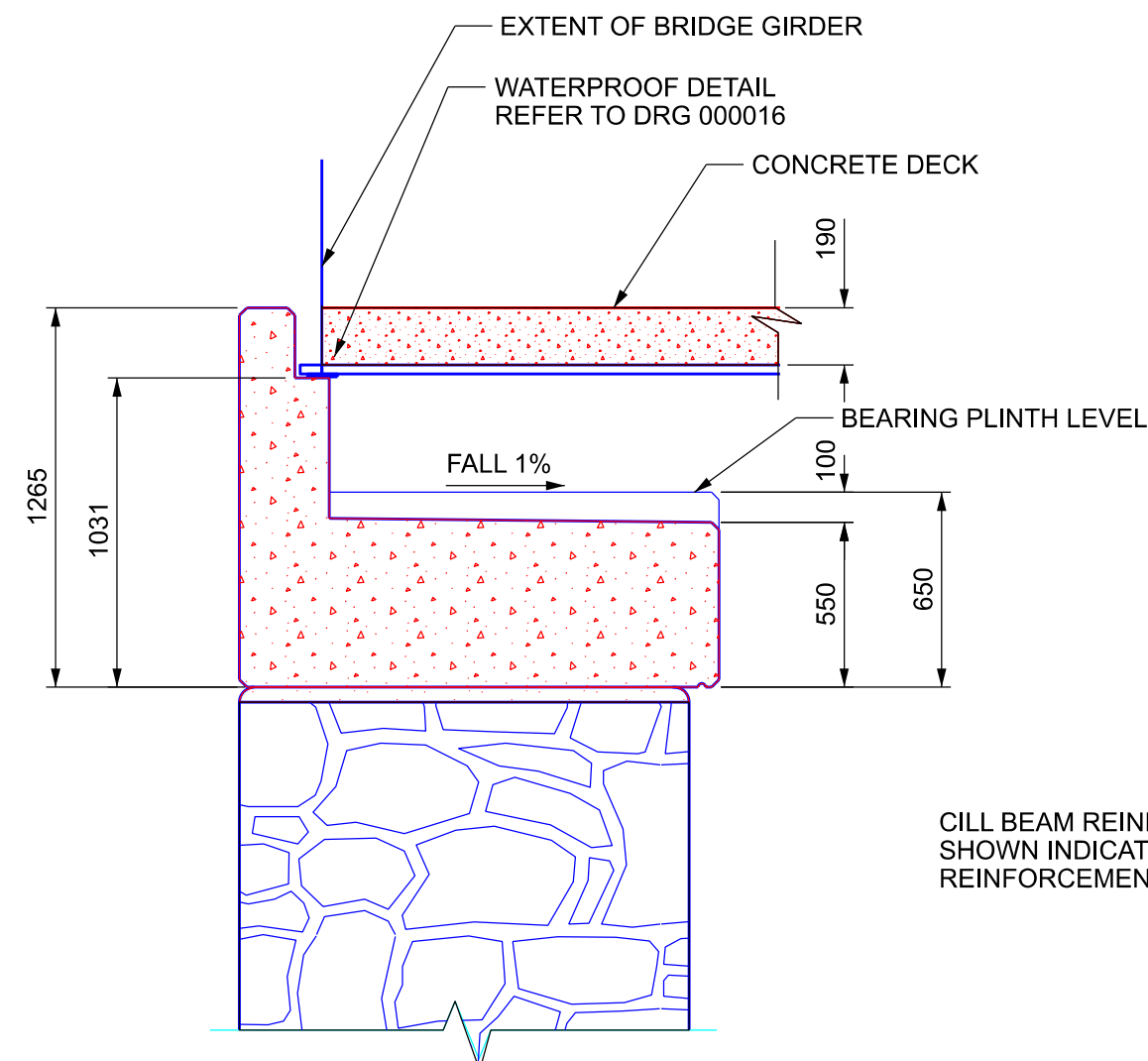
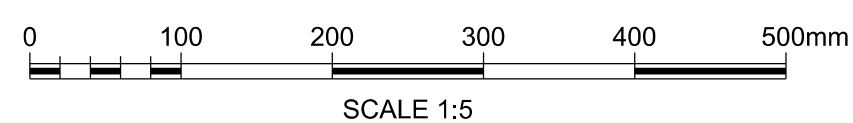


DOWEL POCKET DETAIL 2

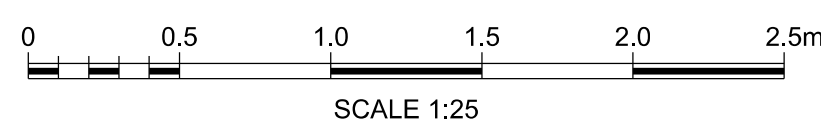
SCALE 1:5



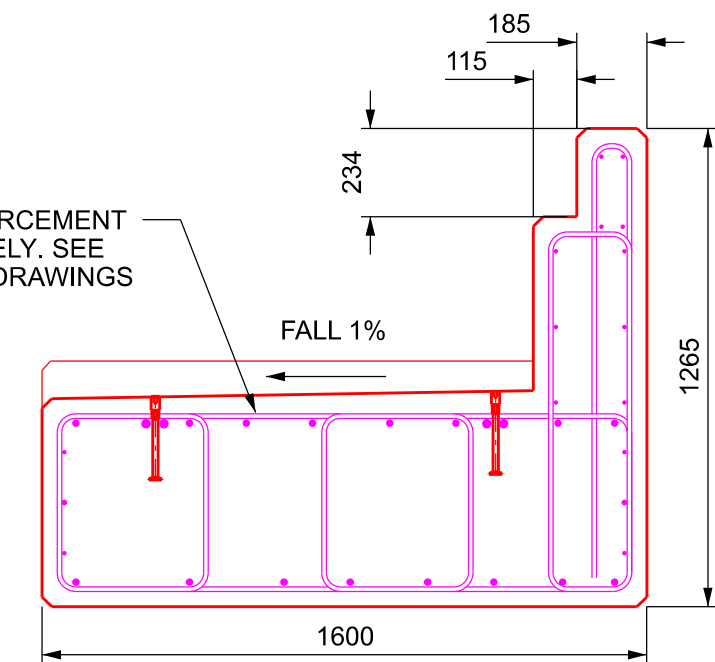
SECTION 1-1



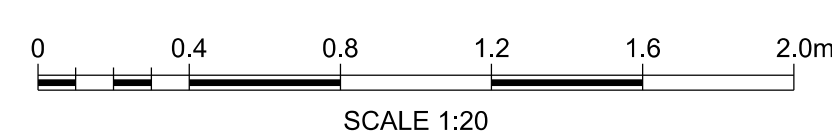
SECTION A-A



CILL BEAM REINFORCEMENT  
SHOWN INDICATIVELY. SEE  
REINFORCEMENT DRAWINGS

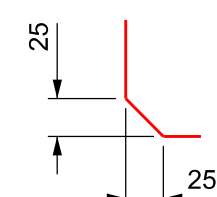


TYPICAL RC ARRANGEMENT

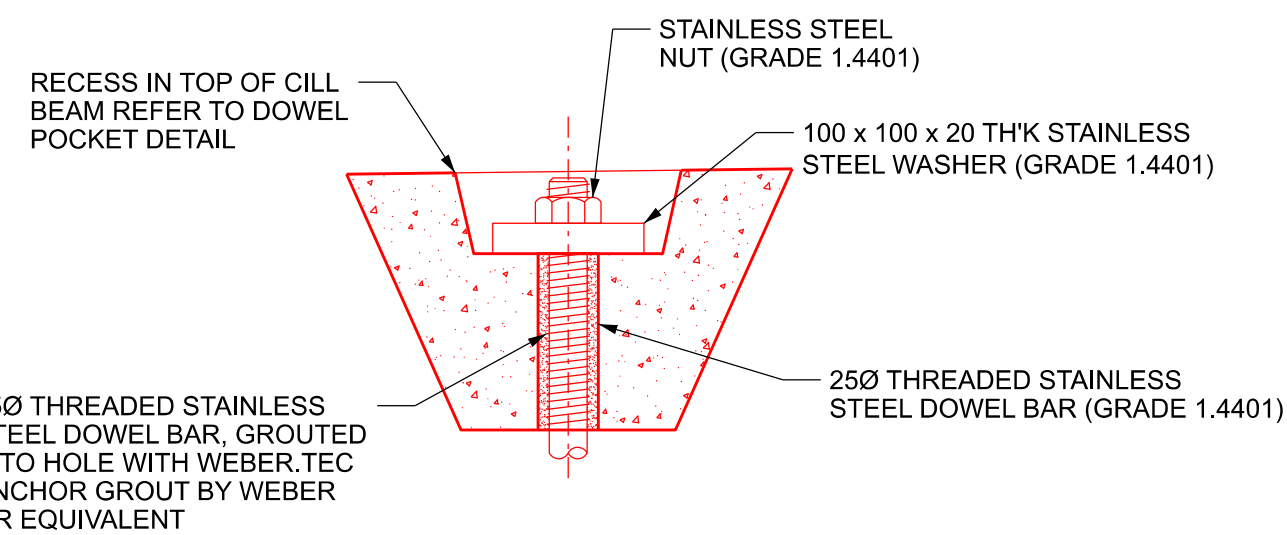


SETTING-OUT POINT IS  
INTERSECTION OF  
PROJECTED FACES

DETAIL OF SETTING OUT POINT



DETAIL OF CHAMFER  
TO ALL EDGES  
SCALE 1:5



ENLARGED FIXING DETAIL

SCALE 1:5

Legend/Notes

- FOR GENERAL NOTES REFER TO THE NOTES DRAWING :-  
162906-CGE-WLS-DJP-DRG-ECV-000001.

PROPOSED CILL BEAM SETTING OUT		
SOPs	EASTINGS (m)	NORTHINGS (m)
C1	266067.475	297225.200
C2	266068.925	297225.473
C3	266067.894	297219.064
C4	266066.325	297219.373



**SAFETY, HEALTH AND ENVIRONMENTAL INFORMATION**

NOTES BELOW ARE ADDITIONAL TO HAZARDS/RISK  
NORMALLY ASSOCIATED WITH THIS TYPE OF WORK

**CONSTRUCTION**  
C1. STEEL DECK & CILL BEAMS LIFTING DURING  
CONSTRUCTION WORKS  
C2. ABUTMENT INSTABILITY DUE TO REFURBISHMENT  
WORKS ON THE ABUTMENT/WING WALLS  
C3. EXCAVATION SLOPE COLLAPSE  
C4. UNDERMINING EXISTING ABUTMENT FOUNDATION  
CV. STABILITY OF THE 'L' SHAPE RETENTION UNITS  
CV. UNFORESEEN GROUND CONDITIONS

**OPERATIONAL & MAINTENANCE**  
O1. DISTURBING THE TRACK DURING WORKS  
O2. WORKING AT HEIGHT, RISK OF PERSONNEL  
FALLING  
O3. PERSONAL INJURY TO WORKERS DUE TO  
CONTACT WITH TRAINS  
O4. SLIP/TRIP/FALLS DUE TO UNEVEN OR STEEP  
GROUND  
O5. DISTURBANCE TO LOCAL AREA AND  
ENVIRONMENT  
O6. CONTAMINATION TO ENVIRONMENT AND  
SPECIES  
O7. INJURY OR INFECTION DUE TO CONTACT TO  
HAZARDOUS MATERIAL  
O8. DAMAGE TO SERVICE CABLES LAID ALONG  
THE BALLAST  
O9. PERSONAL INJURY DUE TO WORKING  
NEAR/ABOVE WATER  
O10. BRIDGE/SCAFFOLD IMPACTED BY LARGE  
OBJECT DURING FLOODING EVENTS  
O11. ABUTMENT INSTABILITY DURING  
CONSTRUCTION WORKS  
O12. STABILITY FAILURE OF THE 'L' SHAPE  
RETENTION UNITS

**DISMANTLING/DEMOLITION**  
D1. OVERTURNING OF ABUTMENT AFTER  
EXISTING DECK HAS BEEN REMOVED

THESE NOTES ARE BASED ON THE USE OF  
EXPERIENCED AND COMPETENT CONTRACTORS  
CARRYING OUT THE WORK USING AN APPROVED  
SAFE METHOD OF WORKING. A RESIDUAL RISK  
AND HAZARD DOCUMENT HAS BEEN CREAT  
FOR A MORE DETAILED ASSESSMENT.

B01	19/05/21	First Issue		CM	MG	SA
P01	29/03/21	First Issue		MM	MG	SA
Rev	Date	Description of Revisions		Drawn	Chkd	Appr
Status						Suitability
Fit for Internal Review & Comment						S3

Status

Fit for Internal Review & Comment

S3



Authorised

Signed

Date

Contractor(s)

Centregreat Rail

Location

ABERDOVEY, WALES, LL35 ORG

Type

CAD Drawing

Sub-type

Role

Civil Engineer

Sub-Role

Structures and Buildings

Zone

Wales Region

Phasing

Grip Stage

5

Region

Western and Wales

Contract No.

162906

Contract Title

Pant Eidal Bridge

Drawing Title

PROPOSED GENERAL  
ARRANGEMENT OF EAST  
(LOW MILEAGE) CILL BEAM

Designed

M. GOPAL

Signed

Electronically Signed

Date

29/03/21

Drawn

M. MITCHELL

Signed

Electronically Signed

Date

29/03/21

Checked

M. GOPAL

Signed

Date

29/03/21

Approved

S. ALCON GENER

Signed

Date

29/03/21

Scale(s)

ELR & Mileage

81m 31.75ch to

0

As Shown

Alternative Reference

162906-CGE-DRG-ECV-000008

Sheet

of

Revision

B01

Drawing Number

162906-CGE-WLS-DJP-DRG-ECV-000008