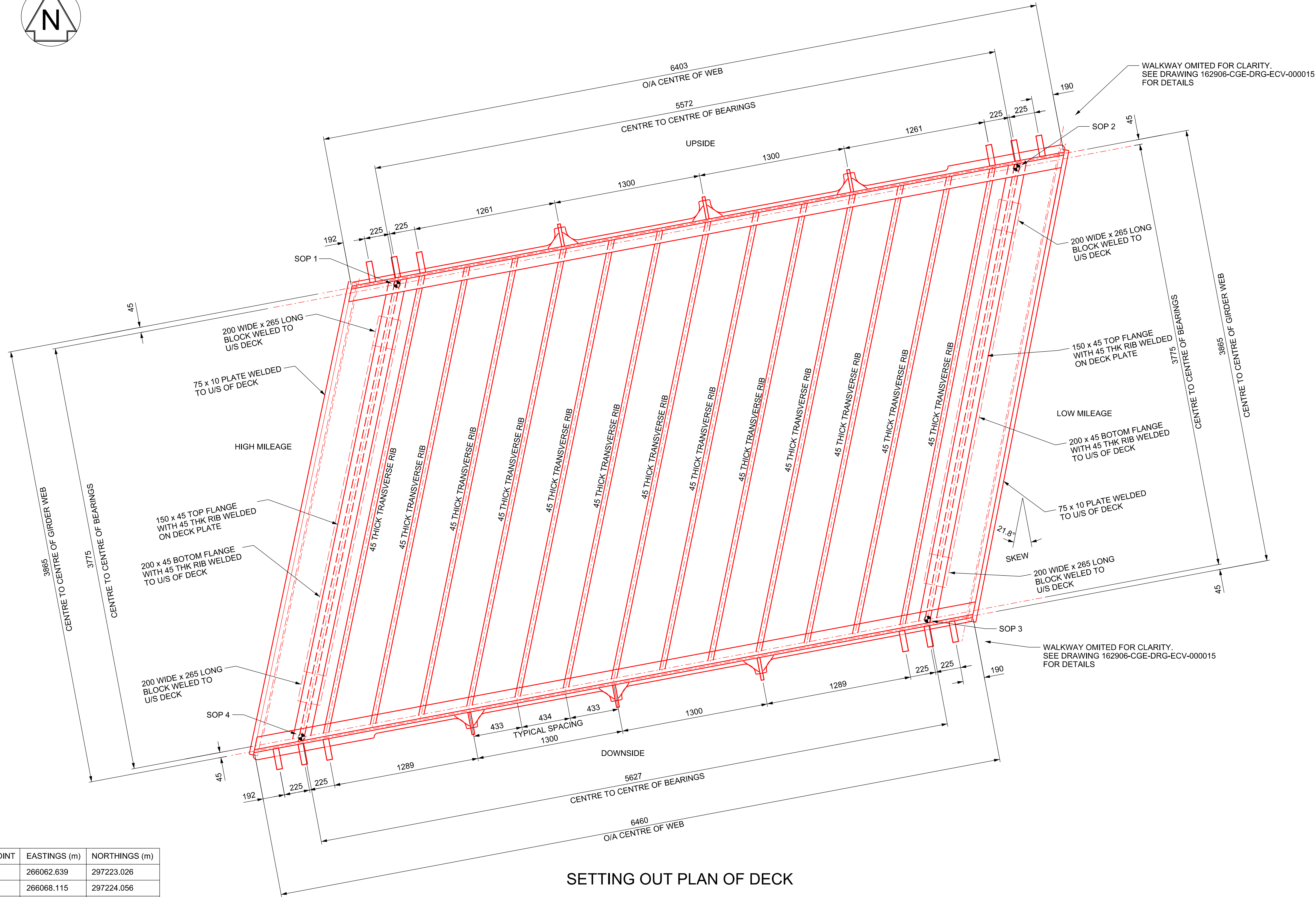


S. O. POINT	EASTINGS (m)	NORTHINGS (m)
1	266062.639	297223.026
2	266068.115	297224.056
3	266067.328	297220.067
4	266061.780	297219.027

LEGEND	
INDICATES LOCATION OF BEARING SOP	
HIGH MILEAGE	FALL 1:250
LOW MILEAGE	
LONGITUDINAL FALL IN BRIDGE DECK	



SETTING OUT PLAN OF DECK

0 0.4 0.8 1.2 1.6 2.0m

SCALE 1:20

Legend/Notes

- FOR GENERAL NOTES REFER TO THE NOTES DRAWING :- 162906-CGE-DRG000001.
- THIS DRAWING IS BASED ON NETWORK RAIL STANDARD DRAWINGS NR/CIV/SD/1310 & NR/CIV/SD/1312

SAFETY, HEALTH AND ENVIRONMENTAL INFORMATION

NOTES BELOW ARE ADDITIONAL TO HAZARDS/RISK NORMALLY ASSOCIATED WITH THIS TYPE OF WORK

CONSTRUCTION

- CI. STEEL DECK & CILL BEAMS LIFTING DURING CONSTRUCTION WORKS
- CII. ABUTMENT INSTABILITY DUE TO REFURBISHMENT WORKS ON THE ABUTMENT/WING WALLS
- CIII. EXCAVATIONS/SLOPE COLLAPSE
- CIV. UNDERMINING EXISTING ABUTMENT FOUNDATION
- CV. STABILITY OF THE 'L' SHAPE RETENTION UNITS
- CVI. UNFORESEEN GROUND CONDITIONS

OPERATIONAL & MAINTENANCE

- OL. DISTURBING THE TRACK DURING WORKS
- OII. WORKING AT HEIGHT, RISK OF PERSONNEL FALLING
- OIII. PERSONAL INJURY TO WORKERS DUE TO CONTACT WITH TRAINS
- OIV. SLIP/TRIP/FALLS DUE TO UNEVEN OR STEEP GROUND
- OVI. DISTURBANCE TO LOCAL AREA AND ENVIRONMENT
- OVI. CONTAMINATION TO ENVIRONMENT AND SPECIES
- OVI. INJURY OR INFECTION DUE TO CONTACT TO HAZARDOUS MATERIAL
- OVI. DAMAGE TO SERVICE CABLES LAID ALONG THE BALLAST
- OIX. PERSONAL INJURY DUE TO WORKING NEAR/ABOVE WATER
- OIX. BRIDGE/SCAFFOLD IMPACTED BY LARGE OBJECT DURING FLOODING EVENTS
- OXL. ABUTMENT INSTABILITY DURING CONSTRUCTION WORKS
- OXL. STABILITY FAILURE OF THE 'L' SHAPE RETENTION UNITS

DISMANTLING/DEMOLITION

- DI. OVERTURNING OF ABUTMENT AFTER EXISTING DECK HAS BEEN REMOVED

THESE NOTES ARE BASED ON THE USE OF EXPERIENCED AND COMPETENT CONTRACTORS CARRYING OUT THE WORK USING AN APPROVED SAFE METHOD OF WORKING. A RESIDUAL RISK AND HAZARD DOCUMENT HAS BEEN CREAT FOR A MORE DETAILED ASSESSMENT.

B01	19/05/21	First Issue		MM	MG	SAG
P01.1	14/05/21	First Issue		MM	MG	SAG
Rev	Date	Description of Revisions		Drawn	Chkd	Appr
Status						Suitability
Fit for Internal Review & Comment						S3

Fit for Internal Review & Comment S3



Authorised		Signed		Date	
Contractor(s)					
CENTREGREAT RAIL					
Location					
ABERDOVEY, WALES, LL35 ORG					
Type	CAD Drawing		Sub-type		
Role	Civil Engineer		Sub-Role		Structures and Buildings
Zone	Wales Region				
Phasing			Grip Stage	5	
Region					
Western and Wales					
Contract No.					
162906					
Contract Title					
Pant Eidal Bridge					
Drawing Title					
PROPOSED GENERAL ARRANGEMENT DECK SETTING OUT					
Designed	M. GOPAL	Signed	Electronically Signed		Date
					29/03/21
Drawn	M. MITCHELL	Signed	Electronically Signed		Date
					29/03/21
Checked	M. GOPAL	Signed			Date
					15/05/21
Approved	S. ALARCON GENER	Signed			Date
					15/05/21
Scale(s)		ELR & Mileage			
As Shown		81m 31.75ch to			0
Alternative Reference				Sheet	of
162906-CGE-DRG-ECV-0000010					
Drawing Number				Revision	
162906-CGE-WLS-DJP-DRG-ECV-0000010				B01	