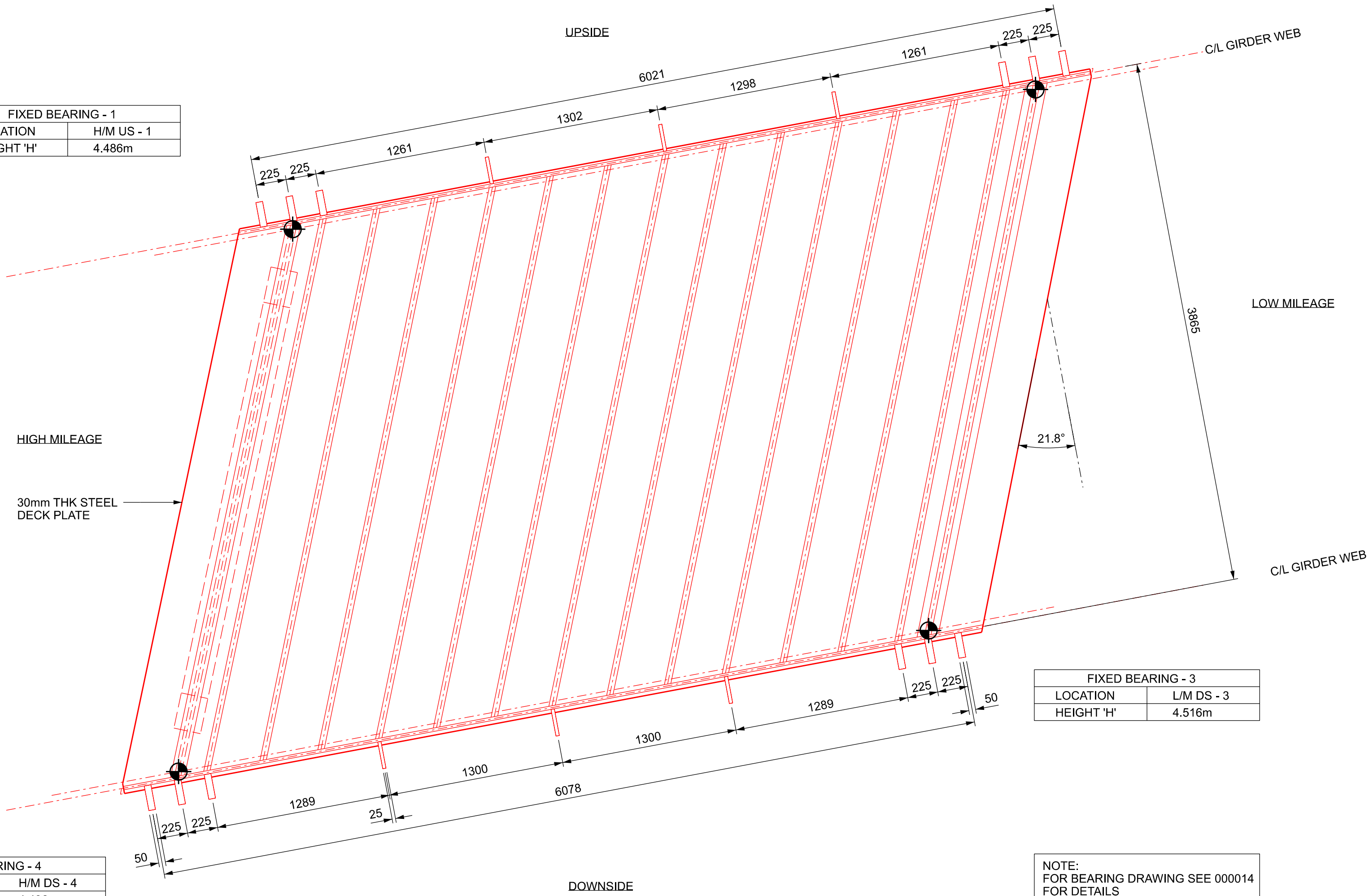


FIXED BEARING - 1	
LOCATION	H/M US - 1
HEIGHT 'H'	4.486m

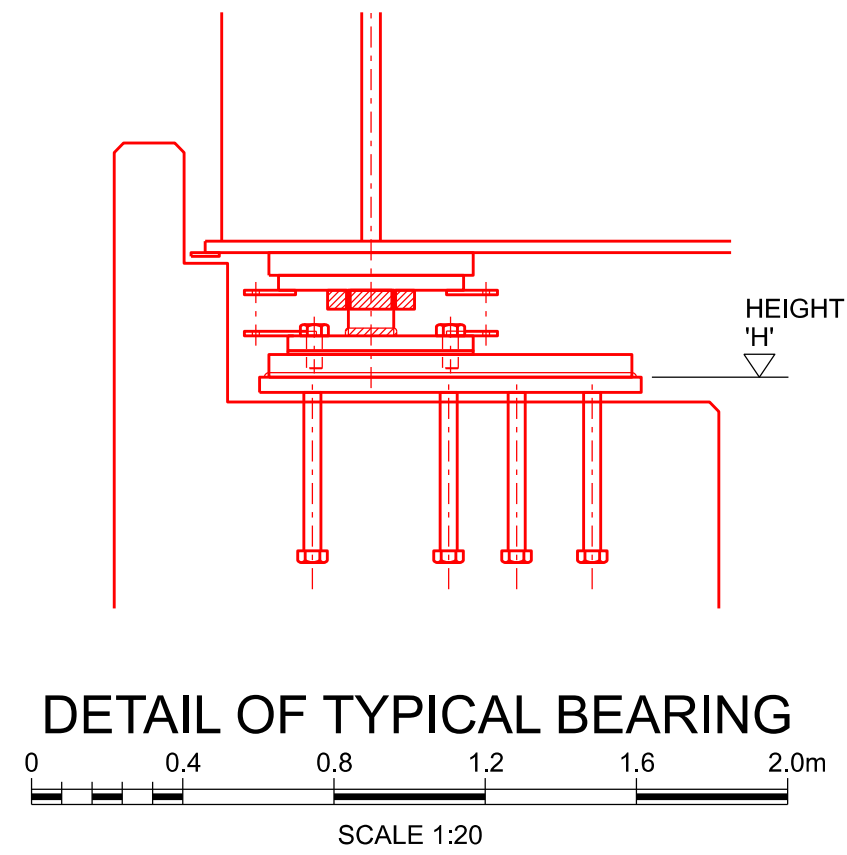
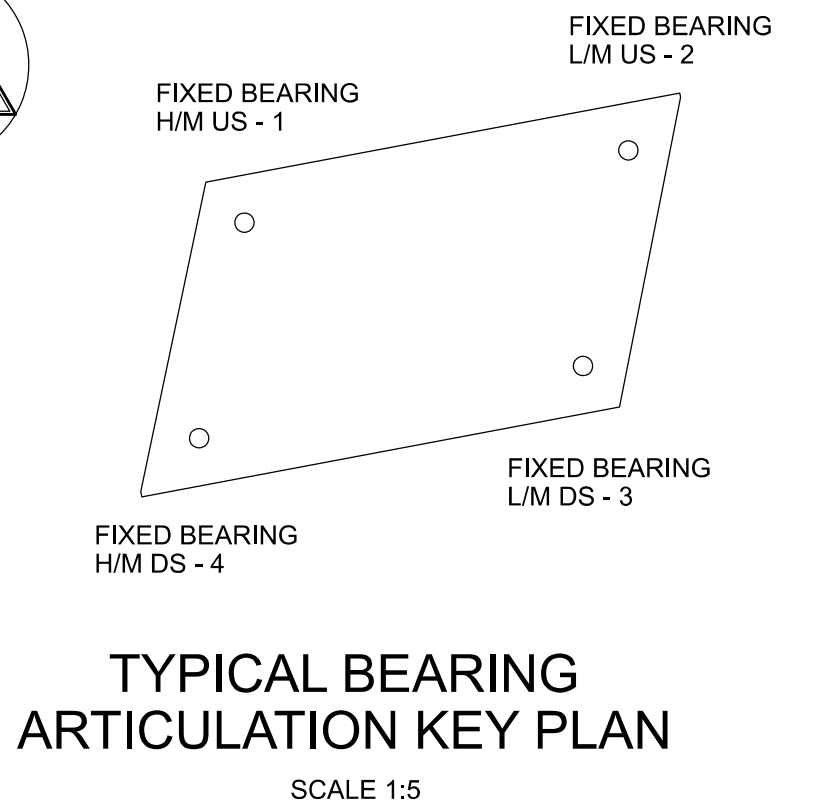
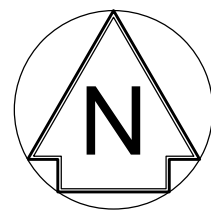
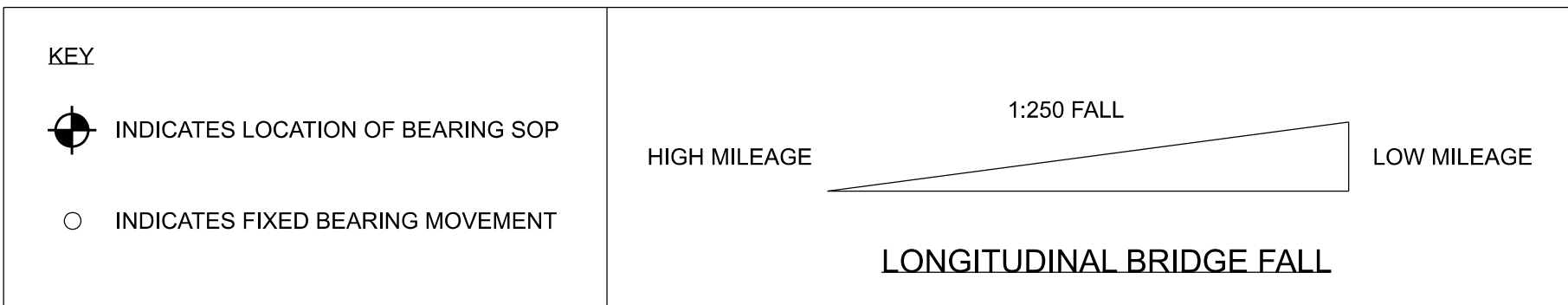
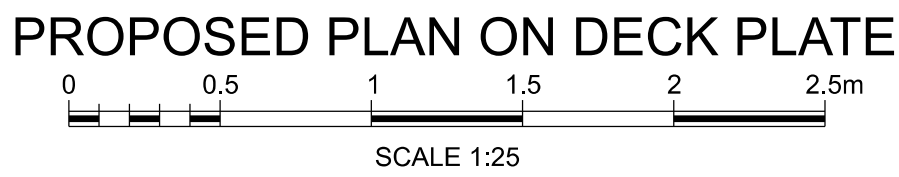
FIXED BEARING - 2	
LOCATION	L/M US - 2
HEIGHT 'H'	4.516m



FIXED BEARING - 4	
LOCATION	H/M DS - 4
HEIGHT 'H'	4.486m

FIXED BEARING - 3	
LOCATION	L/M DS - 3
HEIGHT 'H'	4.516m

NOTE:
FOR BEARING DRAWING SEE 000014
FOR DETAILS



Legend/Notes
1. FOR GENERAL NOTES SEE DRAWING 162906-CGE-WLS-DJP-
DRG-ECV-000001

Rev	Date	Description of Revisions	Drawn	Chkd	Appr	Suitability
B01	19/05/21	First Issue		CM	MG	SAG
P01	29/03/21	First Issue		CM	MG	SAG

Fit for Internal Review & Comment S3



Authorised		Signed		Date	
Contractor(s)					
Centregreat Rail					
Location ABERDOVEY, WALES, LL35 ORG					
Type	CAD Drawing	Sub-type			
Role	Civil Engineer	Sub-Role	Structures and Buildings		
Zone	Wales Region				
Phasing		Grip Stage	5		
Region					
Western and Wales					
Contract No. 162906					
Contract Title Pant Eidal Bridge					
Drawing Title PROPOSED BEARING SETIING OUT DETAILS					
Designed	M. GOPAL	Signed	Electronically Signed	Date	29/03/21
Drawn	C.MANN	Signed	Electronically Signed	Date	29/03/21
Checked	M.GOPAL	Signed		Date	
Approved	S.A.GENER	Signed		Date	
Scale(s)		ELR & Mileage As Shown 81m 31.75ch to 0			
Alternative Reference 162906-CGE-DRG-ECV-000013					Sheet 1 of 1
Drawing Number 162906-CGE-WLS-DJP-DRG-ECV-000013					Revision B01