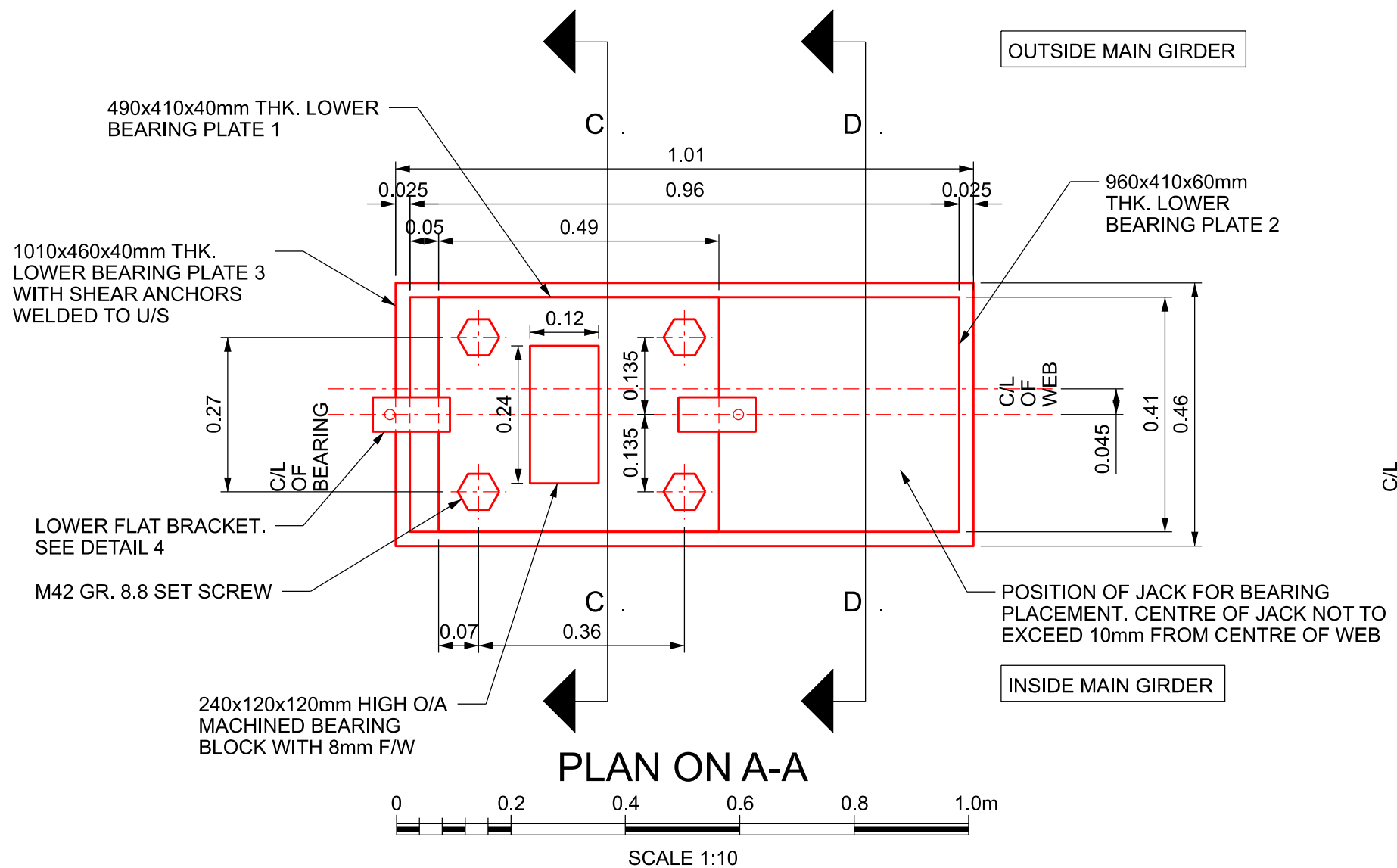
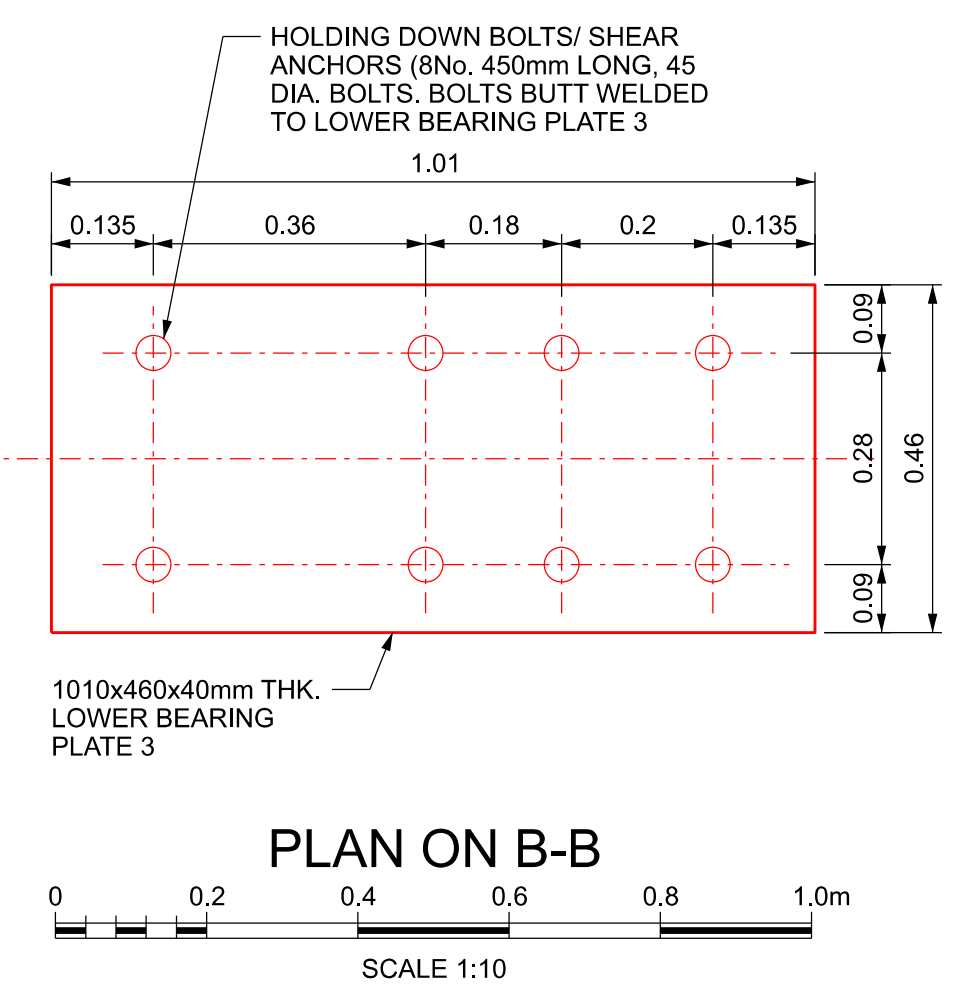


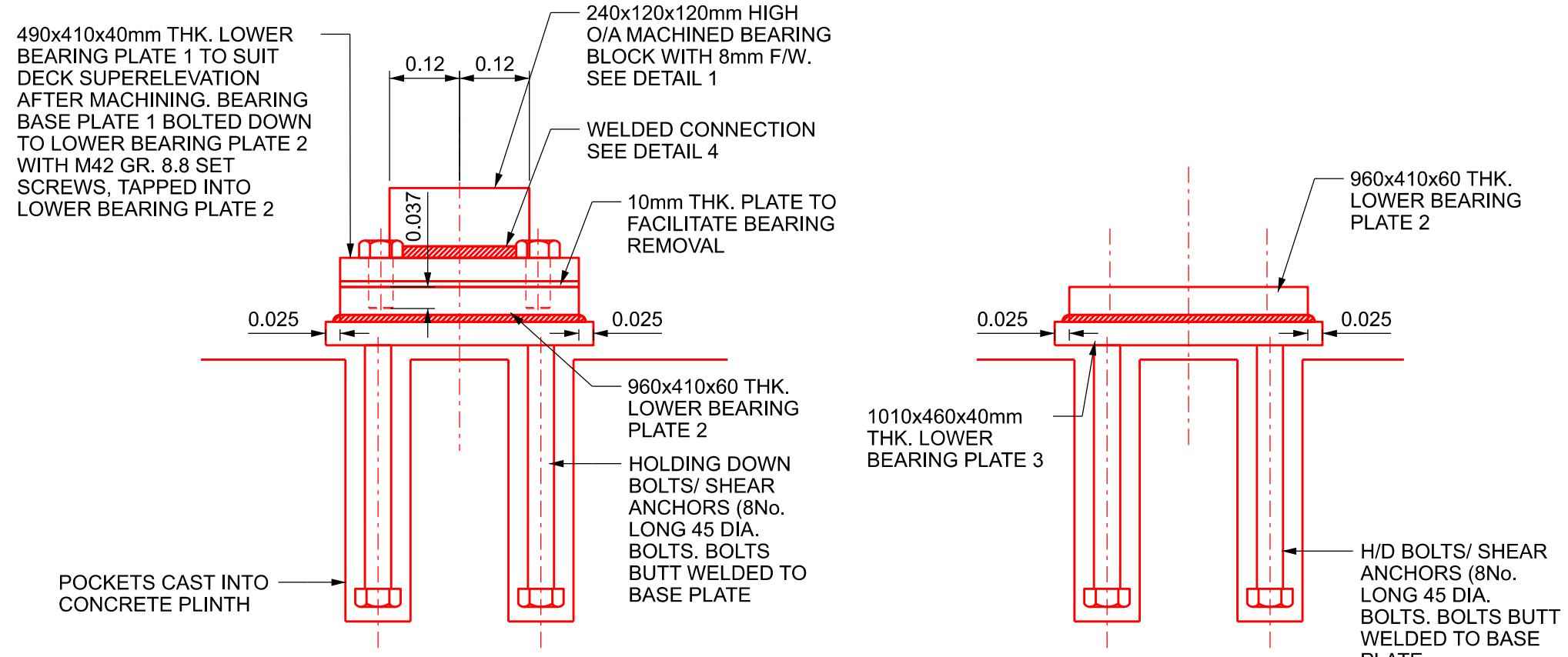
TYPICAL BRIDGE BEARING - FREE BEARING SHOWN  
SCALE 1:10



PLAN ON A-A  
SCALE 1:10

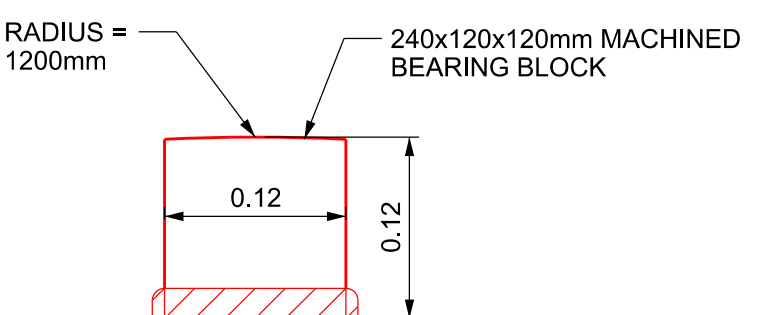


PLAN ON B-B  
SCALE 1:10

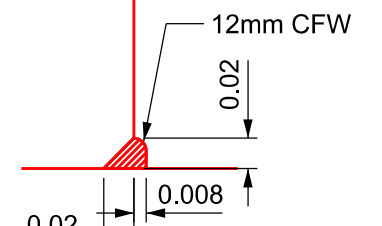


SECTION C-C  
SCALE 1:10

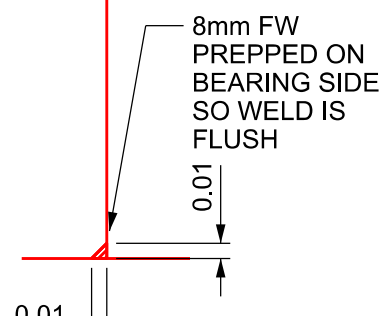
SECTION D-D  
SCALE 1:10



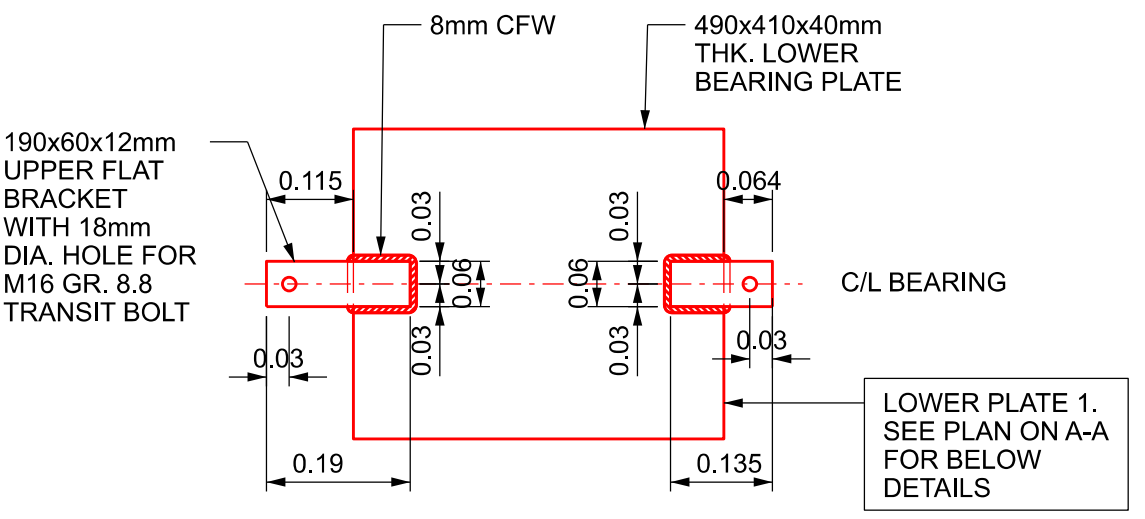
DETAIL 1  
SCALE 1:5



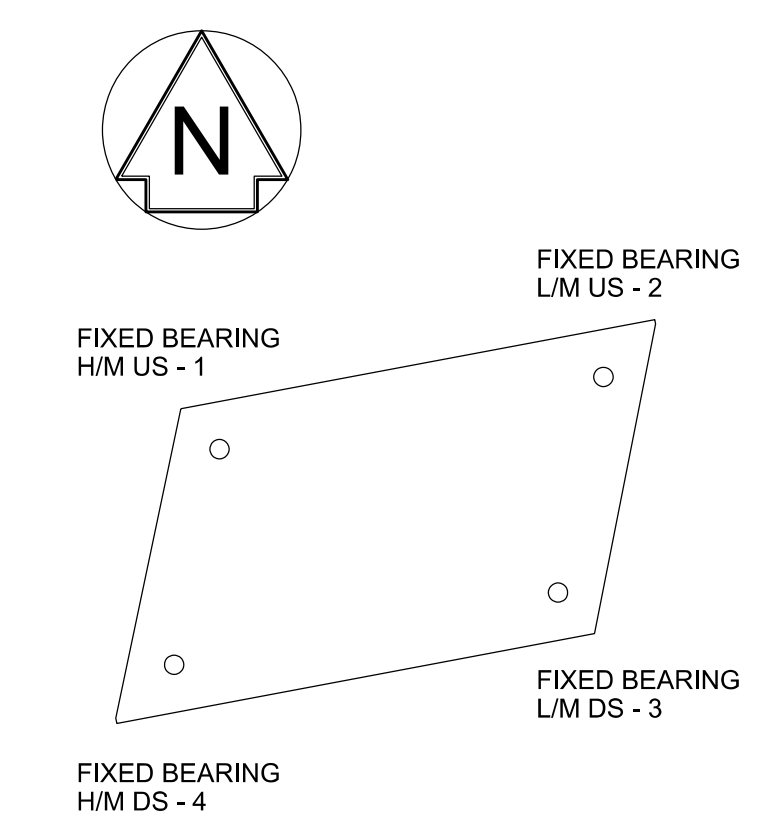
DETAIL 2  
SCALE 1:5



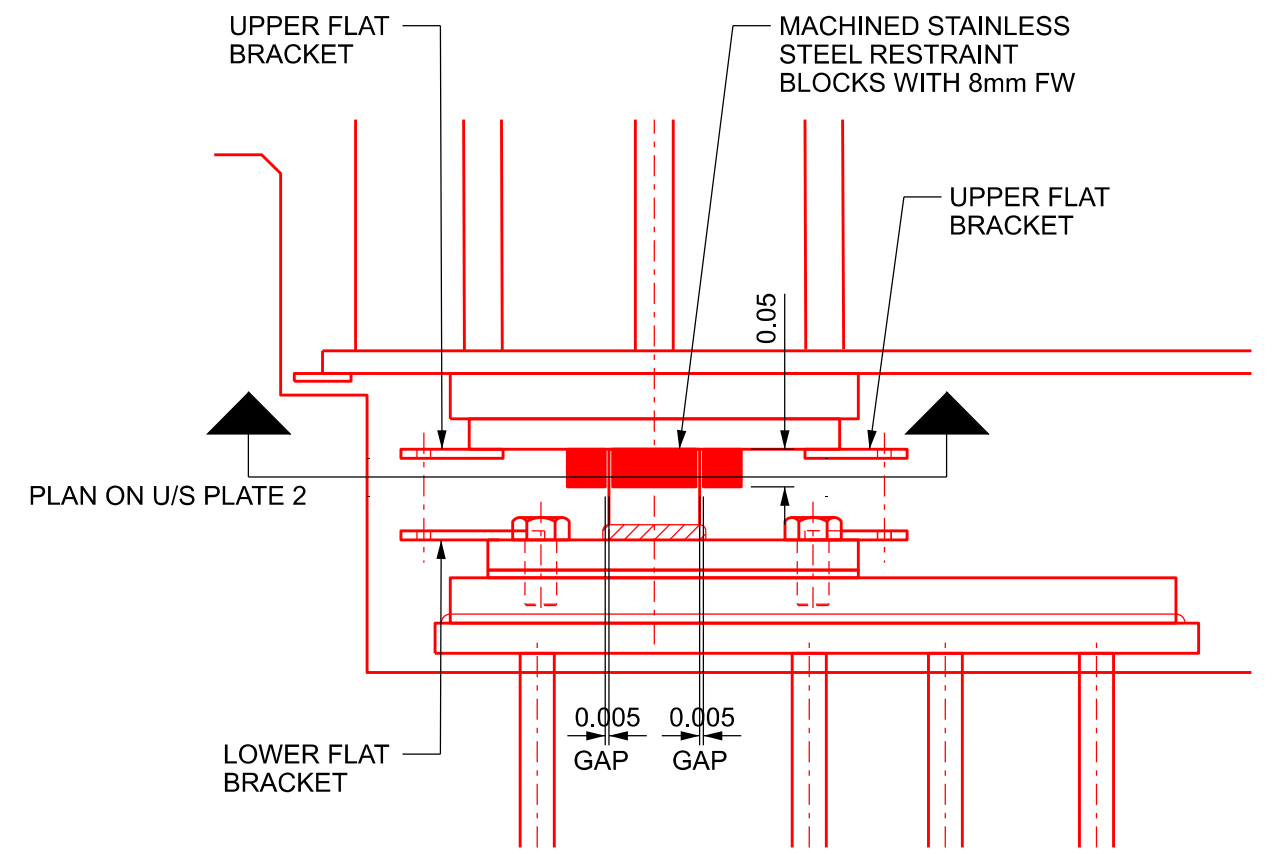
DETAIL 3  
SCALE 1:5



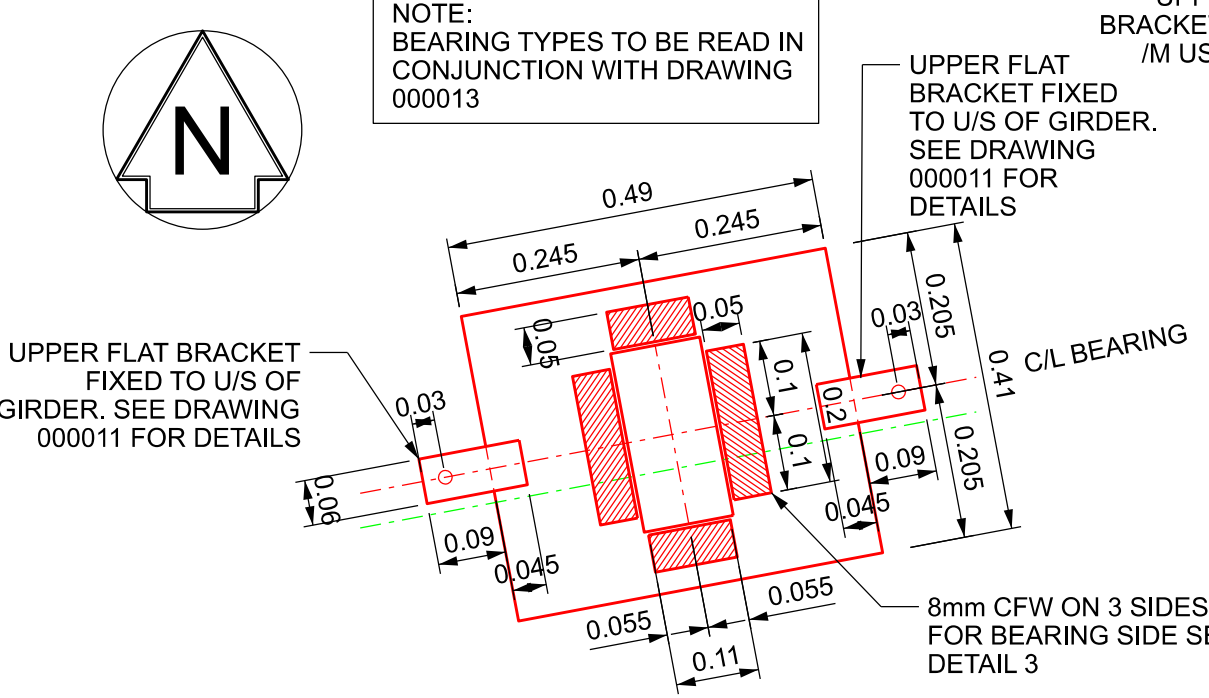
DETAIL 6 - LOWER PLATE 1 LOWER FLAT BRACKET  
SCALE 1:10



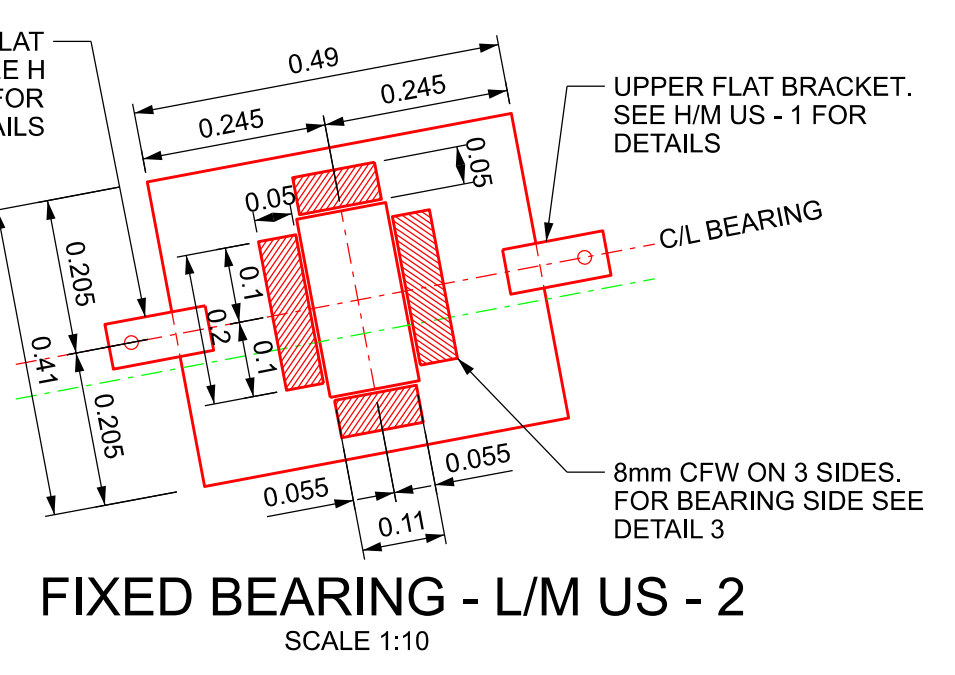
TYPICAL BEARING ARTICULATION KEY PLAN  
SCALE 1:5



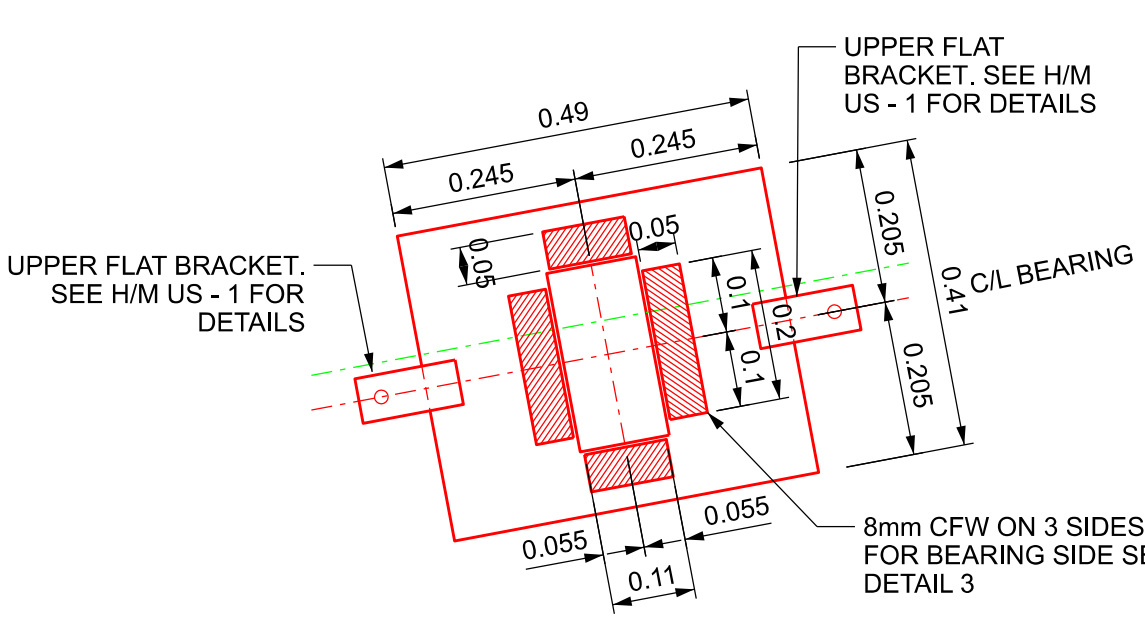
SECTION AT BEARING LOCATION  
SCALE 1:10



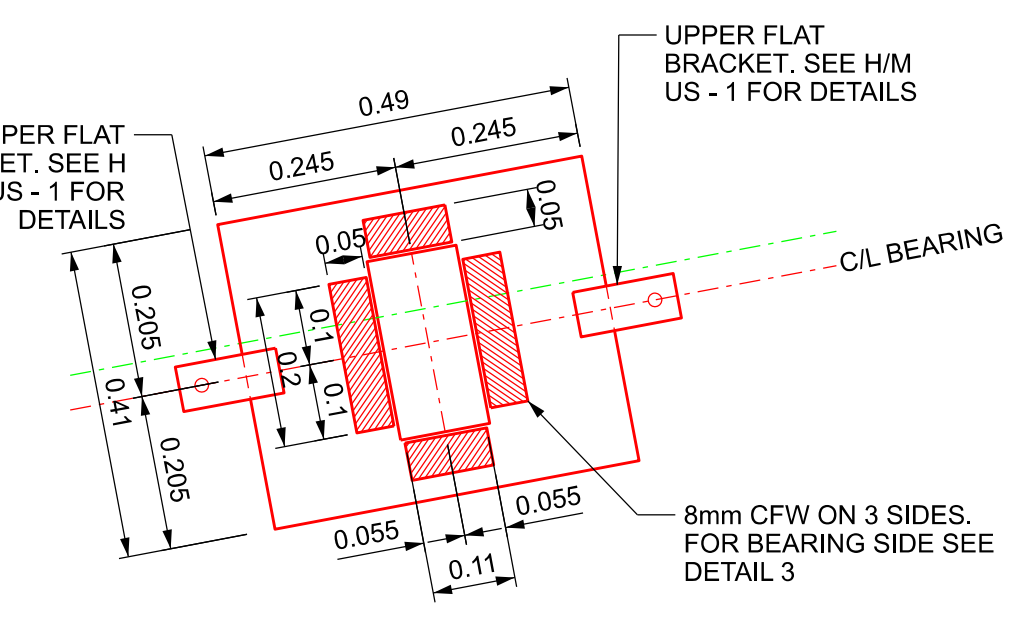
FIXED BEARING - H/M US - 1  
SCALE 1:10



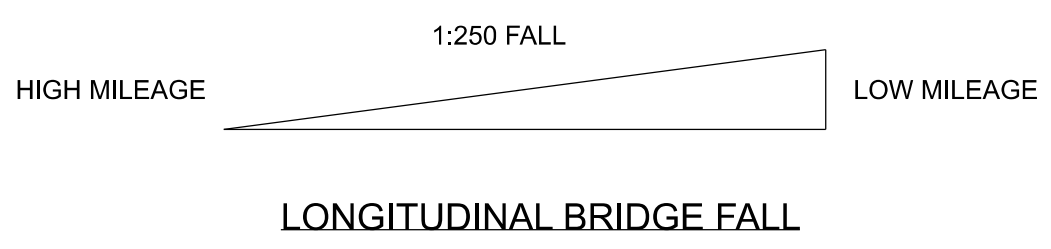
FIXED BEARING - L/M US - 2  
SCALE 1:10



FIXED BEARING - H/M DS - 4  
SCALE 1:10



FIXED BEARING - L/M DS - 3  
SCALE 1:10



LONGITUDINAL BRIDGE FALL

1. FOR GENERAL NOTES SEE DRAWING 162906-CGE-WLS-DJP-DRG-ECV-000001



SAFETY, HEALTH AND ENVIRONMENTAL INFORMATION

NOTES BELOW ARE ADDITIONAL TO HAZARDS/RISK NORMALLY ASSOCIATED WITH THIS TYPE OF WORK

CONSTRUCTION  
CI. STEEL DECK & CILL BEAMS LIFTING DURING CONSTRUCTION WORKS  
CII. ABUTMENT INSTABILITY DUE TO REFURBISHMENT WORKS ON THE ABUTMENT/WING WALLS  
CIII. EXCAVATION/SLOPE COLLAPSE  
CIV. UNDERMINING EXISTING ABUTMENT FOUNDATION  
CV. STABILITY OF THE 'L' SHAPE RETENTION UNITS  
CVI. UNFORESEEN GROUND CONDITIONS

OPERATIONAL & MAINTENANCE  
CI. DISTURBING THE TRACK DURING WORKS  
CII. WORKING AT HEIGHT, RISK OF PERSONNEL FALLING  
CIII. PERSONAL INJURY TO WORKERS DUE TO CONTACT WITH TRAINS  
CIV. SLIP/TRIP/FALLS DUE TO UNEVEN OR STEEP GROUND  
CV. DISTURBANCE TO LOCAL AREA AND ENVIRONMENT  
CVI. CONTAMINATION TO ENVIRONMENT AND SPECIES  
CVII. INJURY OR INFECTION DUE TO CONTACT TO HAZARDOUS MATERIAL  
CVIII. DAMAGE TO SERVICE CABLES LAID ALONG THE BALLAST  
CIX. PERSONAL INJURY DUE TO WORKING NEAR/ABOVE WATER  
CX. BRIDGE/SCAFFOLD IMPACTED BY LARGE OBJECT DURING FLOODING EVENTS  
CXI. ABUTMENT INSTABILITY DURING CONSTRUCTION WORKS  
CXII. STABILITY FAILURE OF THE 'L' SHAPE RETENTION UNITS

DISMANTLING/DEMOLITION  
DI. OVERTURNING OF ABUTMENT AFTER EXISTING DECK HAS BEEN REMOVED

THESE NOTES ARE BASED ON THE USE OF EXPERIENCED AND COMPETENT CONTRACTORS CARRYING OUT THE WORK USING AN APPROVED SAFE METHOD OF WORKING. A RESIDUAL RISK AND HAZARD DOCUMENT HAS BEEN CREATED FOR A MORE DETAILED ASSESSMENT.

B01	19/05/21	First Issue				CM	MG	SAG
P01	29/03/21	First Issue				CM	MG	SAG
Rev	Date	Description of Revisions			Drawn	Chkd	Appr	
Status							Suitability	
Fit for Internal Review & Comment								
S3								

Fit for Internal Review & Comment S3



Authorised \_\_\_\_\_ Signed \_\_\_\_\_ Date \_\_\_\_\_

Contractor(s) \_\_\_\_\_

Centregreat Rail

Location ABERDOVEY, WALES, LL35 ORG

Type CAD Drawing Sub-type \_\_\_\_\_

Role Civil Engineer Sub-Role Structures and Buildings

Zone Wales Region

Phasing \_\_\_\_\_ Grip Stage 5

Region \_\_\_\_\_

Western and Wales

Contract No. 162906

Contract Title Pant Eidal Bridge

Drawing Title PROPOSED BEARING DETAILS

Designed M. GOPAL Signed Electronically Signed Date 29/03/21

Drawn C.MANN Signed Electronically Signed Date 29/03/21

Checked M.GOPAL Signed \_\_\_\_\_ Date \_\_\_\_\_

Approved S.A.GENER Signed \_\_\_\_\_ Date \_\_\_\_\_

Scale(s) As Shown ELR & Mileage 81m 31.75ch to 0

Alternative Reference 162906-CGE-DRG-ECV-000014 of \_\_\_\_\_

Drawing Number 162906-CGE-WLS-DJP-DRG-ECV-000014 Revision B01