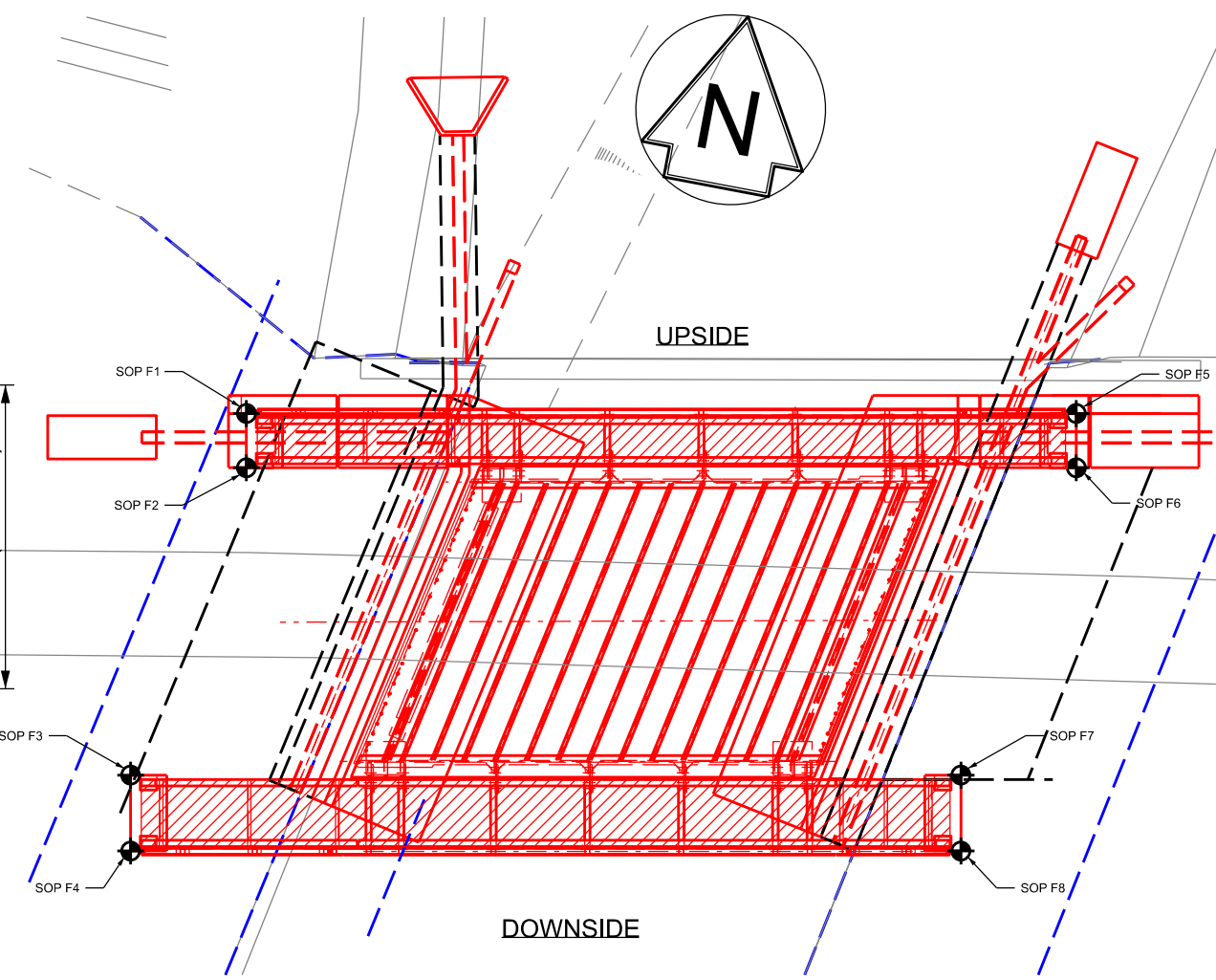
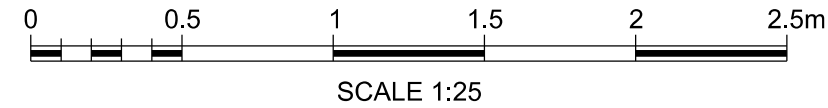
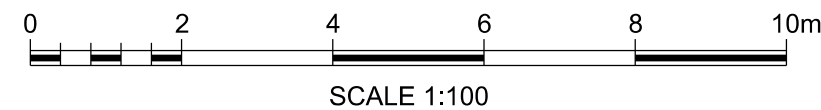


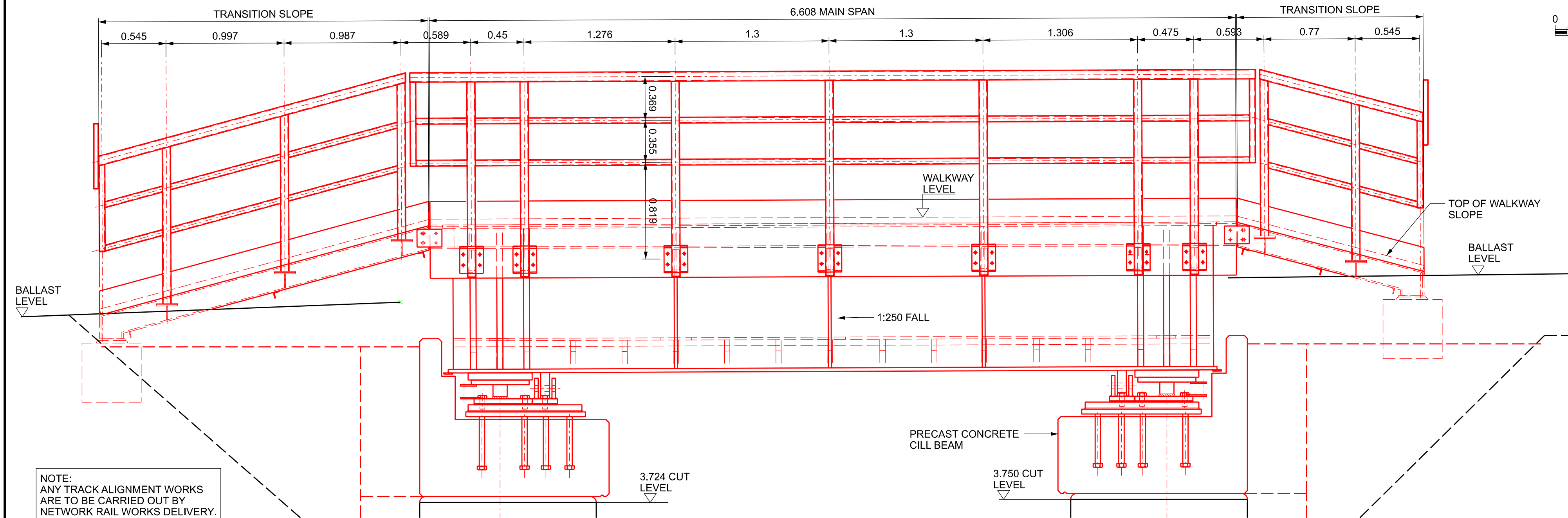
PLAN ON DOWNSIDE WALKWAY - SOUTH



PROPOSED GENERAL
ARRANGEMENT KEY PLAN



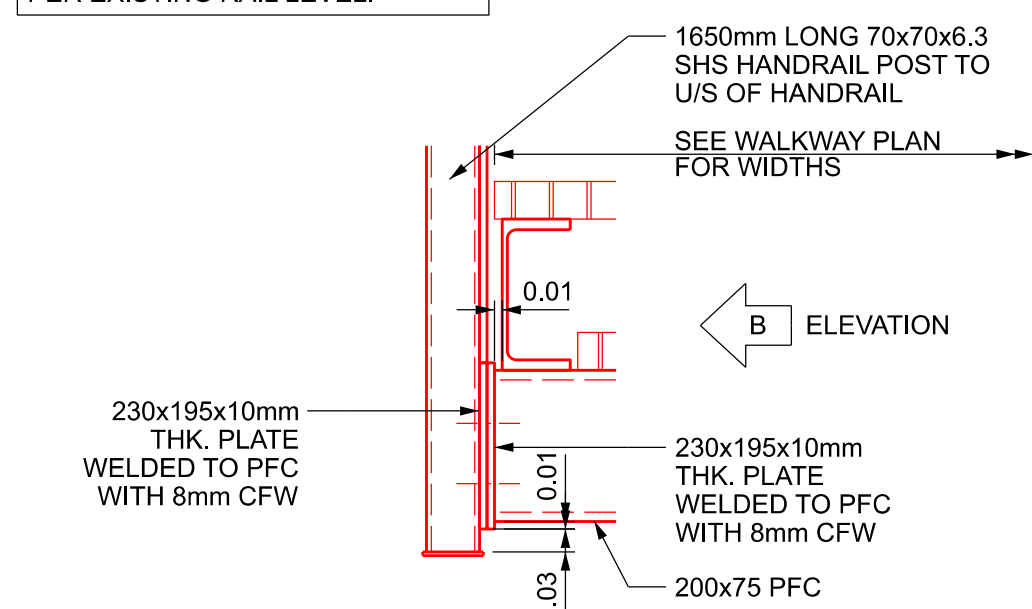
NOTE:
UPSIDE (NORTH) AND DOWNSIDE
(SOUTH) WALKWAYS ARE SAME
LENGTH BUT VARY IN WIDTH.
UPSIDE TOTAL WIDTH IS 700mm
WIDE (DUE TO BALLAST
RETENTION UNITS), DOWNSIDE
TOTAL WIDTH IS 870mm WIDE.



SOUTH ELEVATION - DOWNSIDE

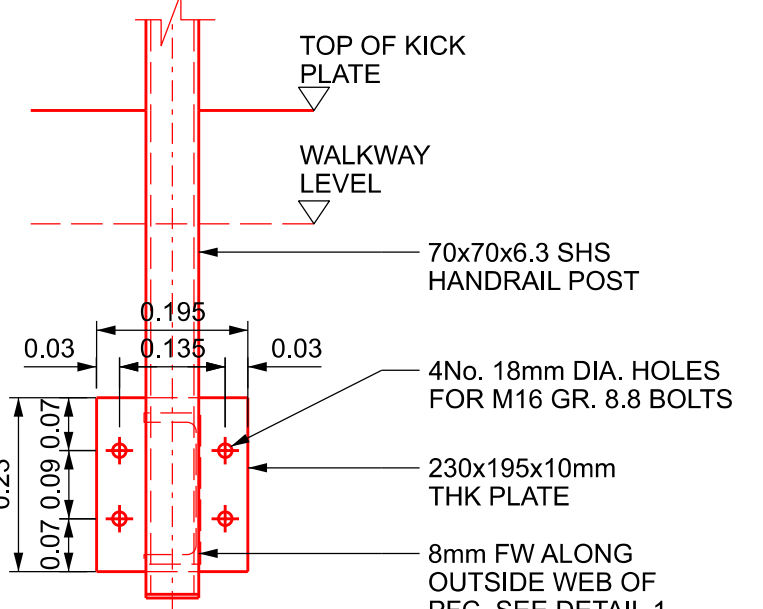


NOTE:
ANY TRACK ALIGNMENT WORKS
ARE TO BE CARRIED OUT BY
NETWORK RAIL WORKS DELIVERY.
PROPOSED RAIL LEVEL TO BE AS
PER EXISTING RAIL LEVEL.



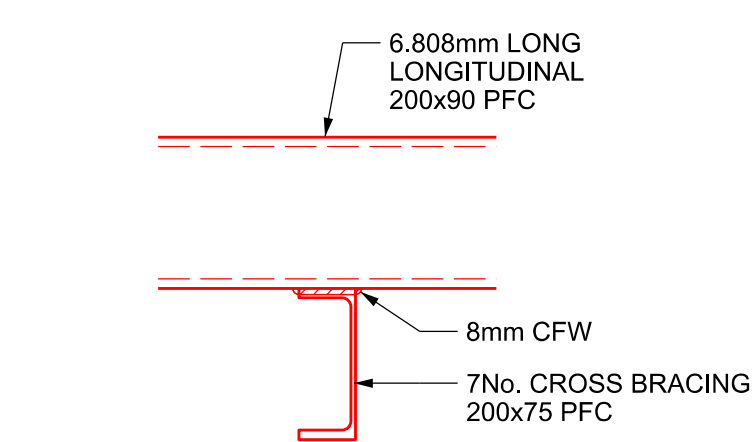
HANDRAIL POST FIXING

SCALE 1:10



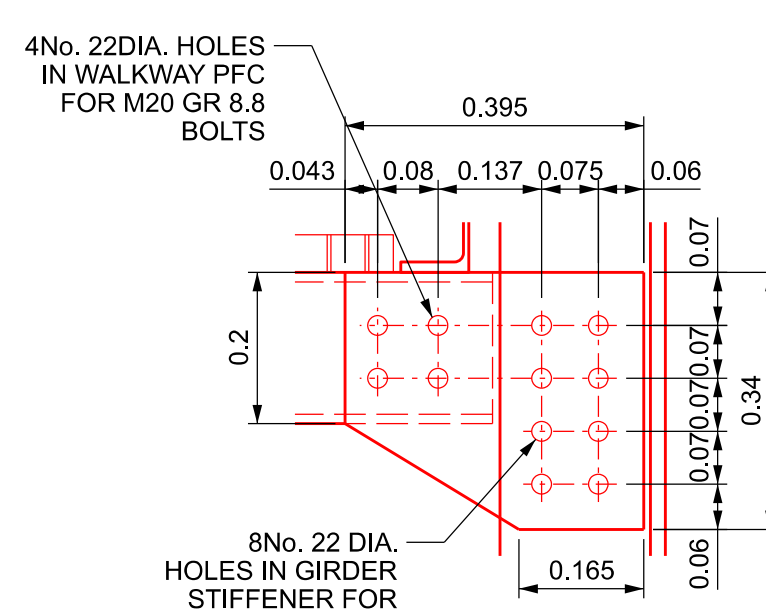
ELEVATION B - HANDRAIL POST FIXING

SCALE 1:10



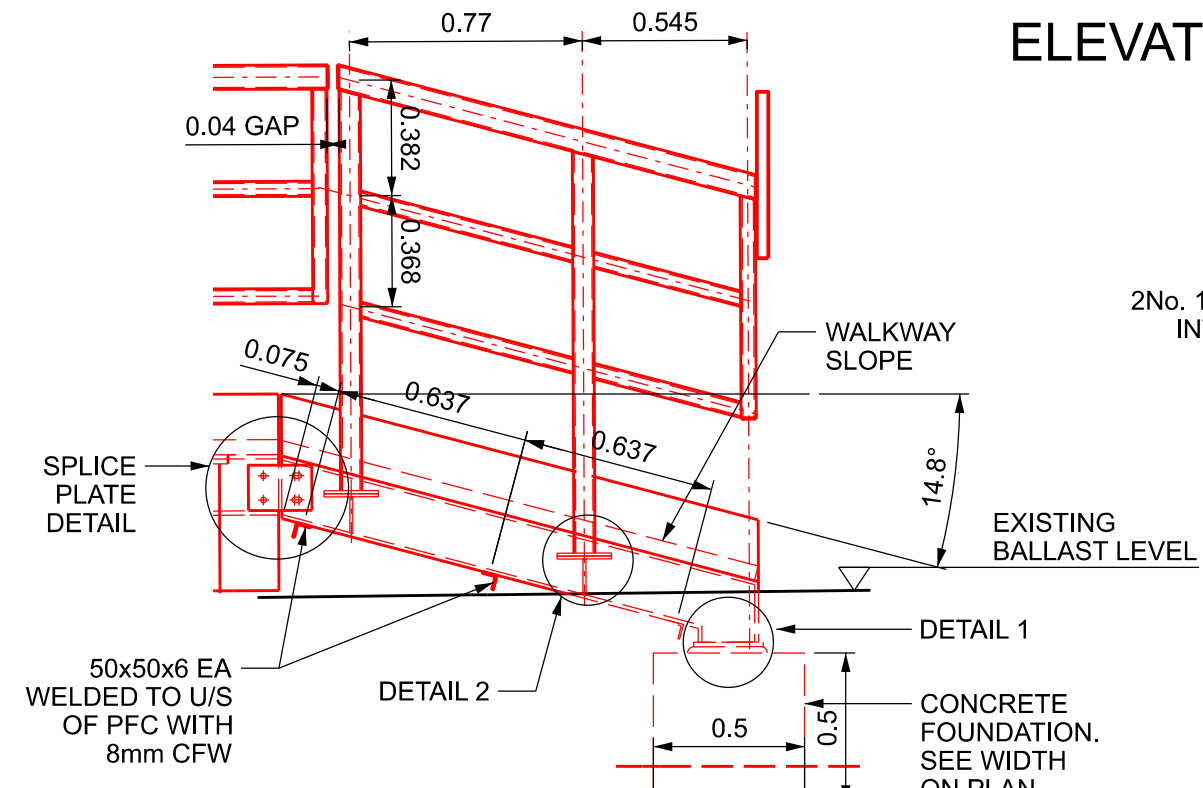
PFC TO PFC CONNECTION

SCALE 1:10



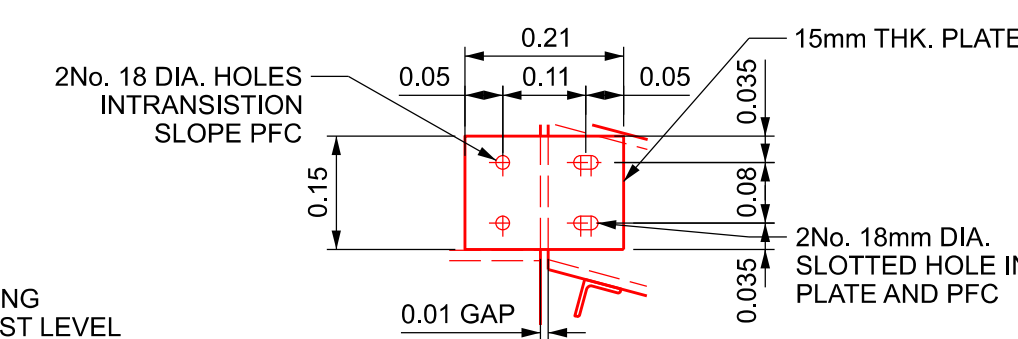
SPlice PLATE - CESS WALKWAY FIXING
TO BRIDGE GIRDER

SCALE 1:10



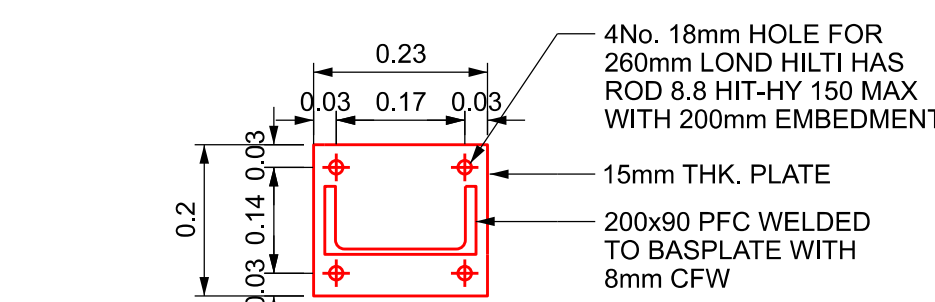
TRANSITION SLOPE

SCALE 1:25



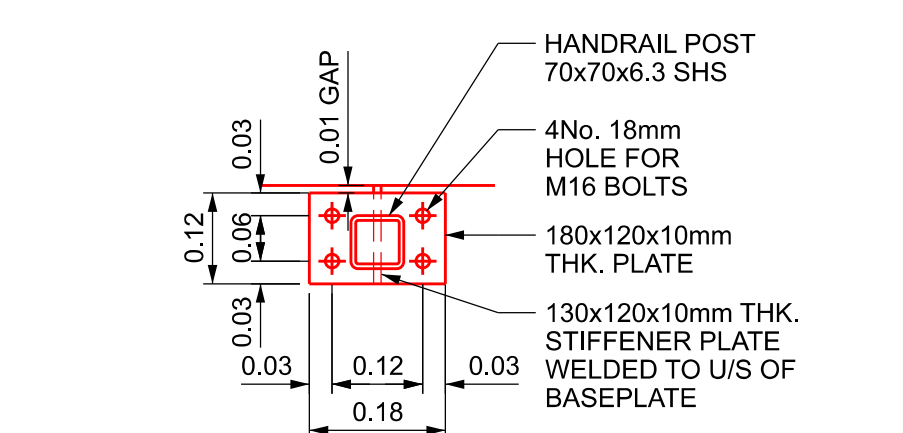
SPlice PLATE DETAIL

SCALE 1:10



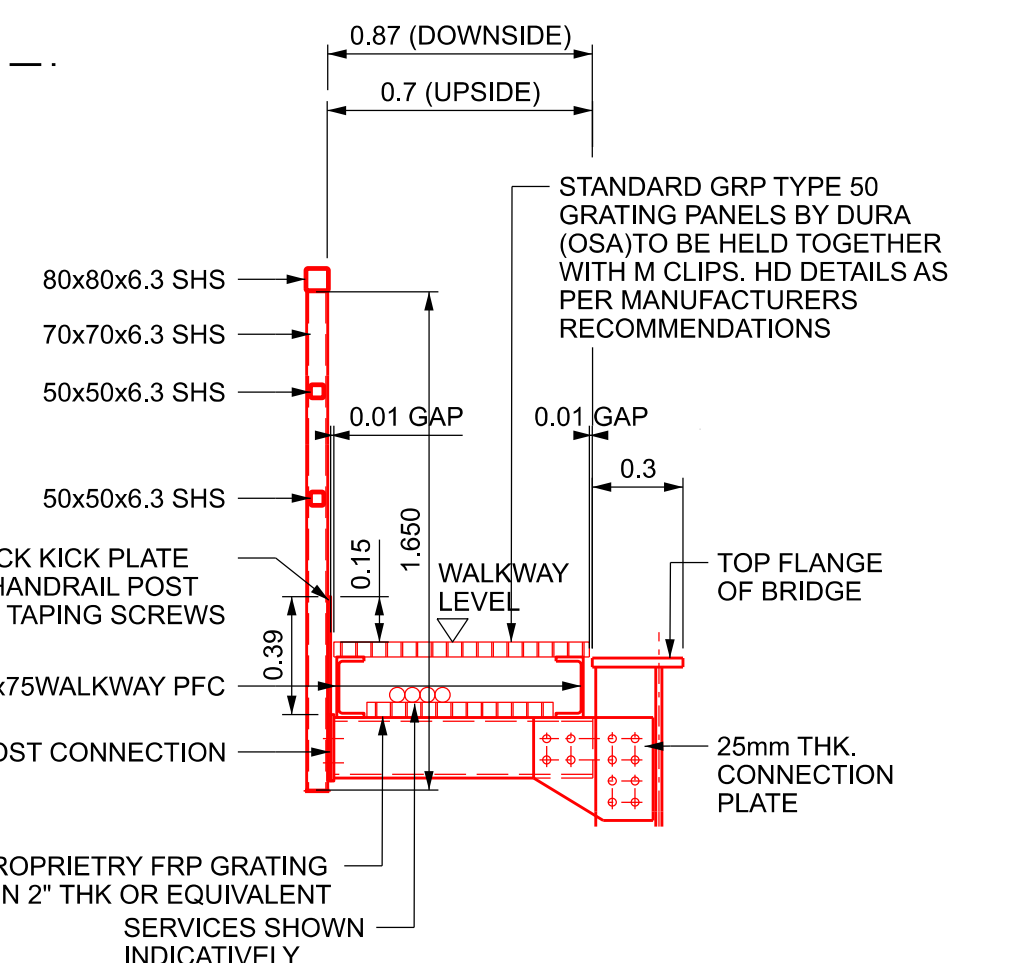
DETAIL 1- BASE PLATE DETAIL

SCALE 1:10

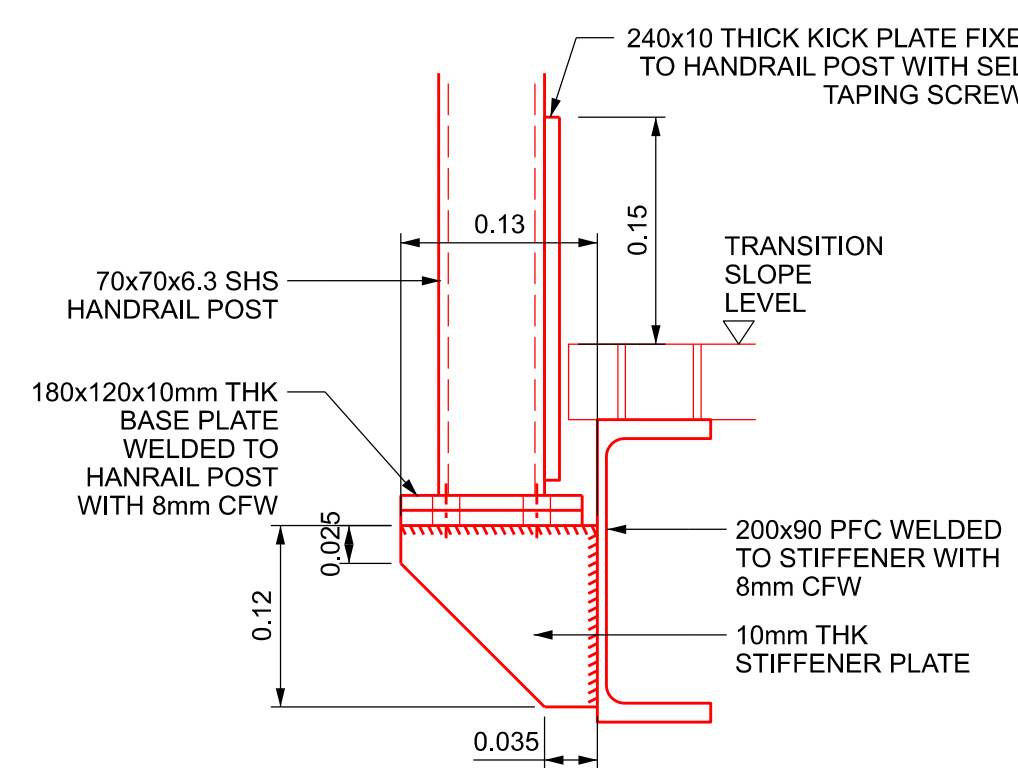


DETAIL 2- HANDRAIL BASE
PLATE DETAIL

SCALE 1:10



SECTION A-A - CESS WALKWAY



DETAIL 2- HANDRAIL BASE
PLATE ELEVATION

SCALE 1:5

1. FOR GENERAL NOTES SEE DRAWING 162906-CGE-WLS-DJP-
DRG-ECV-000001

CESS WALKWAY FOUNDATION SETTING OUT		
SOP's	EASTING (m)	NORTHING (m)
F1	266059.002	297223.355
F2	266059.142	297222.613
F3	266058.352	297218.140
F4	266058.546	297217.108
F5	266070.288	297225.478
F6	266070.428	297224.736
F7	266069.643	297220.264
F8	266069.837	297219.232



SAFETY, HEALTH AND ENVIRONMENTAL INFORMATION
NOTES BELOW ARE ADDITIONAL TO HAZARDS/RISK
NORMALLY ASSOCIATED WITH THIS TYPE OF WORK

CONSTRUCTION
C1. STEEL DECK & CILL BEAMS LIFTING DURING
CONSTRUCTION WORKS
C2. ABUTMENT INSTABILITY DUE TO REFURBISHMENT
WORKS ON THE ABUTMENT/WING WALLS
C3. EXCAVATION/SLOPE COLLAPSE
C4. UNDERMINING EXISTING ABUTMENT FOUNDATION
C5. STABILITY OF THE 'L' SHAPE RETENTION UNITS
C6. UNFORESEEN GROUND CONDITIONS

OPERATIONAL & MAINTENANCE
O1. DISTURBING THE TRACK DURING WORKS
O2. WORKING AT HEIGHT, RISK OF PERSONNEL
FALLING
O3. PERSONAL INJURY TO WORKERS DUE TO
CONTACT WITH TRAINS
O4. SLIP/TRIP/FALLS DUE TO UNEVEN OR STEEP
GROUND
O5. DISTURBANCE TO LOCAL AREA AND
ENVIRONMENT
O6. CONTAMINATION TO ENVIRONMENT AND
SPECIES
O7. INJURY OR INFECTION DUE TO CONTACT TO
HAZARDOUS MATERIAL
O8. DAMAGE TO SERVICE CABLES LAID ALONG
THE BALLAST
O9. PERSONAL INJURY DUE TO WORKING
NEAR/ABOVE WATER
O10. BRIDGE/SCAFFOLD IMPACTED BY LARGE
OBJECT DURING FLOODING EVENTS
O11. ABUTMENT INSTABILITY DURING
CONSTRUCTION WORKS
O12. STABILITY FAILURE OF THE 'L' SHAPE
RETENTION UNITS

DISMANTLING/DEMOLITION
D1. OVERTURNING OF ABUTMENT AFTER
EXISTING DECK HAS BEEN REMOVED

THESE NOTES ARE BASED ON THE USE OF
EXPERIENCED AND COMPETENT CONTRACTORS
CARRYING OUT THE WORK USING AN APPROVED
SAFE METHOD OF WORKING, A RESIDUAL RISK
AND HAZARD DOCUMENT HAS BEEN CREAT
FOR A MORE DETAILED ASSESSMENT.

Rev	Date	Description of Revisions	Drawn	Chkd	Appr	Suitability
B01	19/05/21	First Issue				
P01	29/03/21	First Issue				
Fit for Internal Review & Comment						S3



Authorised _____ Signed _____ Date _____

Contractor(s) _____

Centregreat Rail

Location ABERDOVEY, WALES, LL35 ORG

Type CAD Drawing Sub-type _____

Role Civil Engineer Sub-Role Structures and Buildings

Zone Wales Region

Phasing _____ Grip Stage 5

Region _____

Western and Wales

Contract No. 162906

Contract Title

Pant Eidal Bridge

Drawing Title

PROPOSED WALKWAY

DETAILS

Designed M. GOPAL Signed Electronically Signed Date 29/03/21

Drawn C.MANN Signed Electronically Signed Date 29/03/21

Checked M.GOPAL Signed _____ Date _____

Approved S.A.GENER Signed _____ Date _____

Scale(s) As Shown ELR & Mileage 81m 31.75ch to 0

Alternative Reference 162906-CGE-DRG-ECV-000015 Sheet 1 of 1

Drawing Number 162906-CGE-WLS-DJP-DRG-ECV-000015 Revision B01