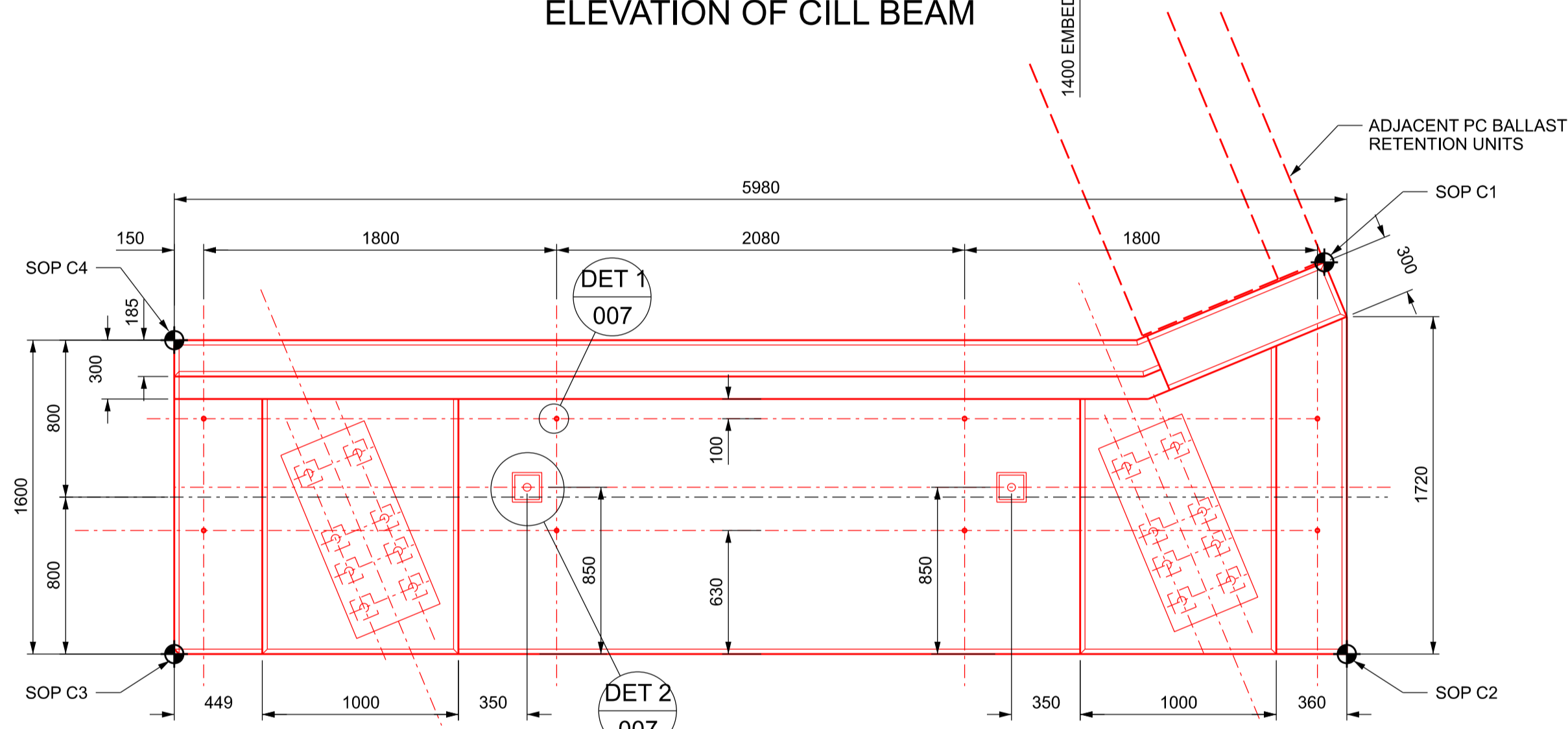
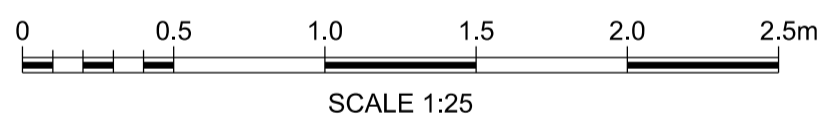


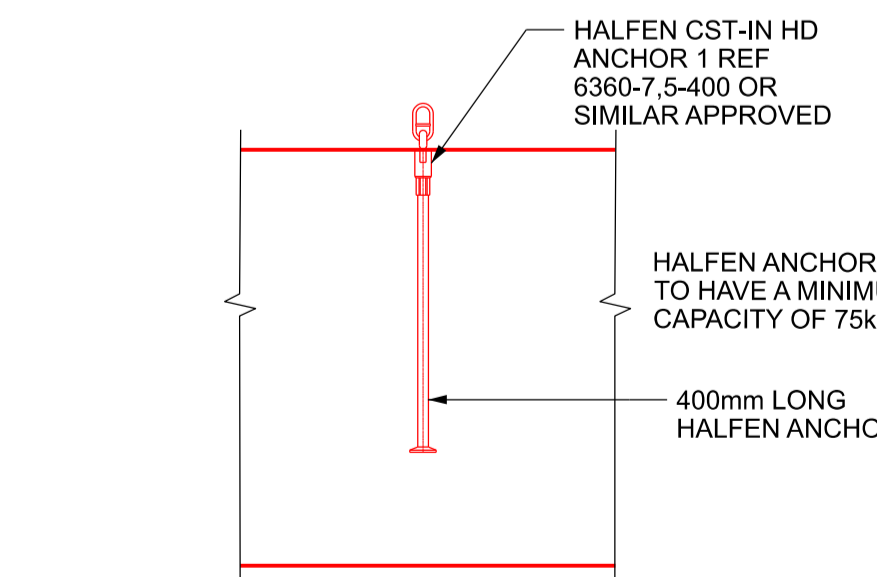
ELEVATION OF CILL BEAM



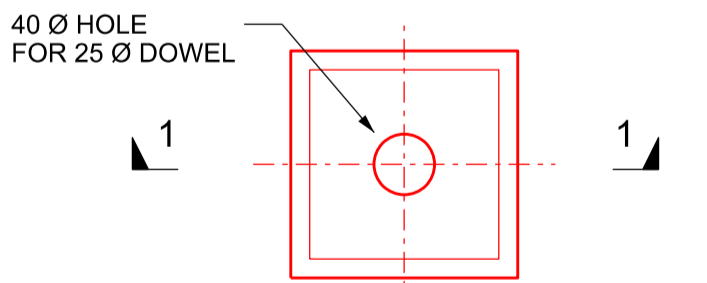
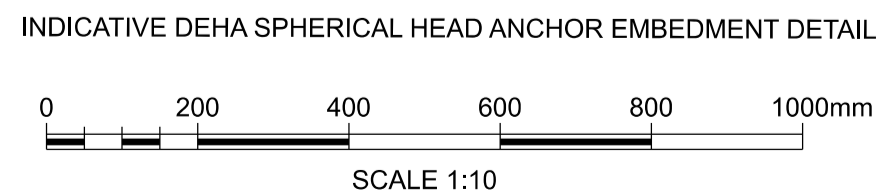
PLAN OF HIGH MILEAGE CILL BEAM



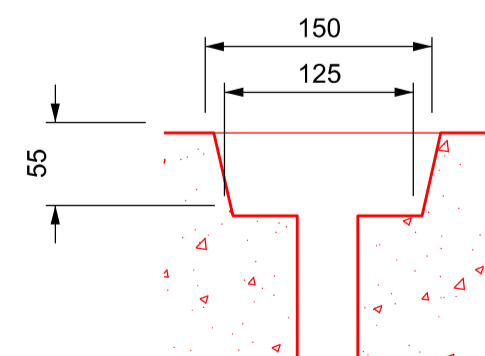
NOTE:
WEIGHT TO BE ALLOWED FOR LIFTING -
CILL BEAM UNIT WEIGHT IS 18.5
TONNES (UNFACTORED)



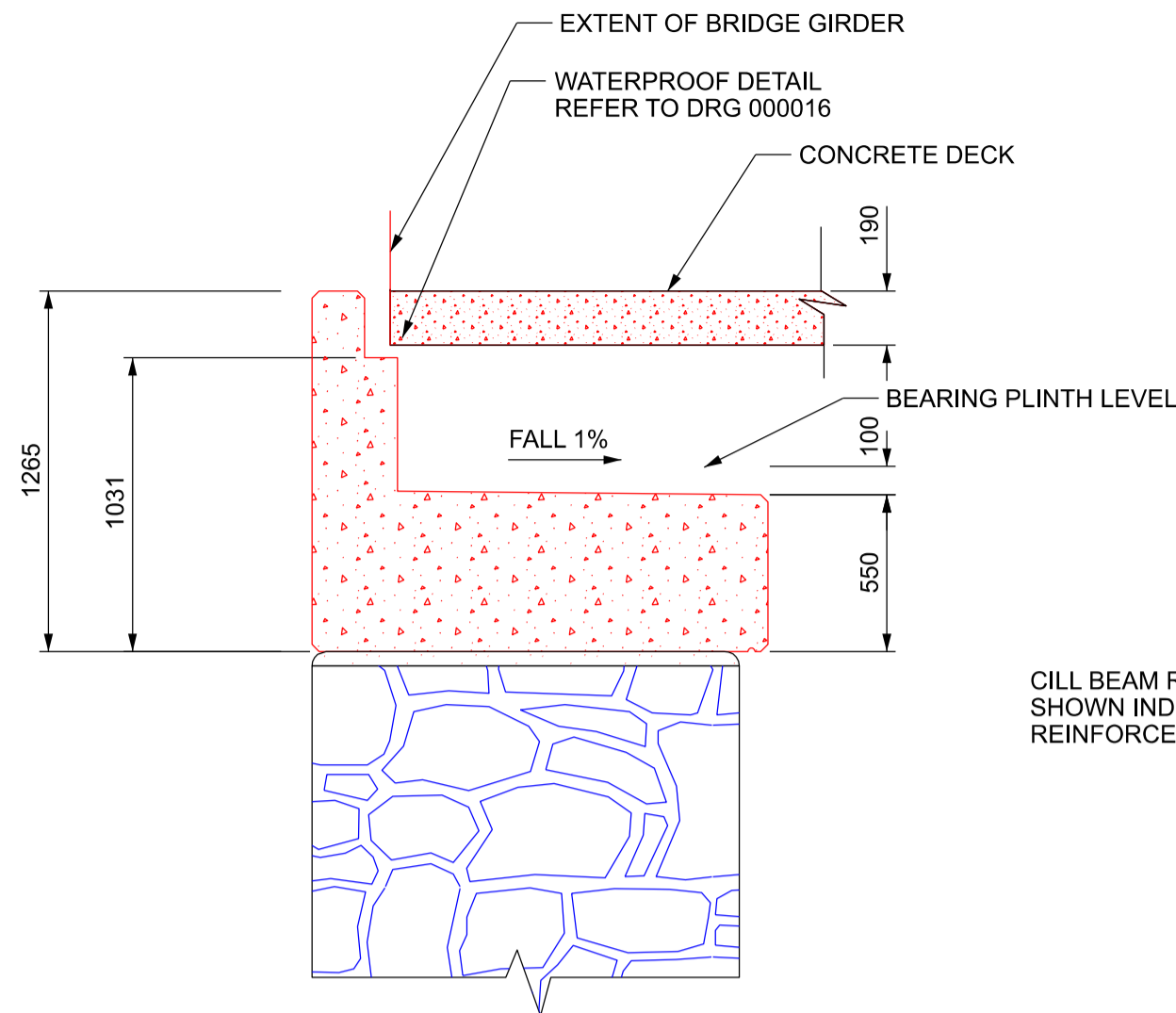
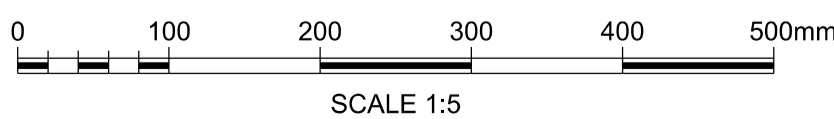
LIFTING LUG DETAIL 1



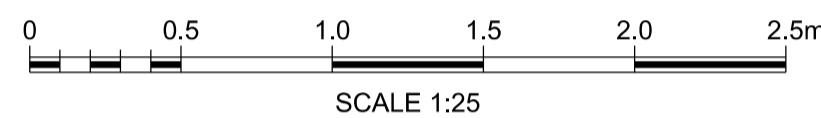
DOWEL POCKET DETAIL 2
SCALE 1:5



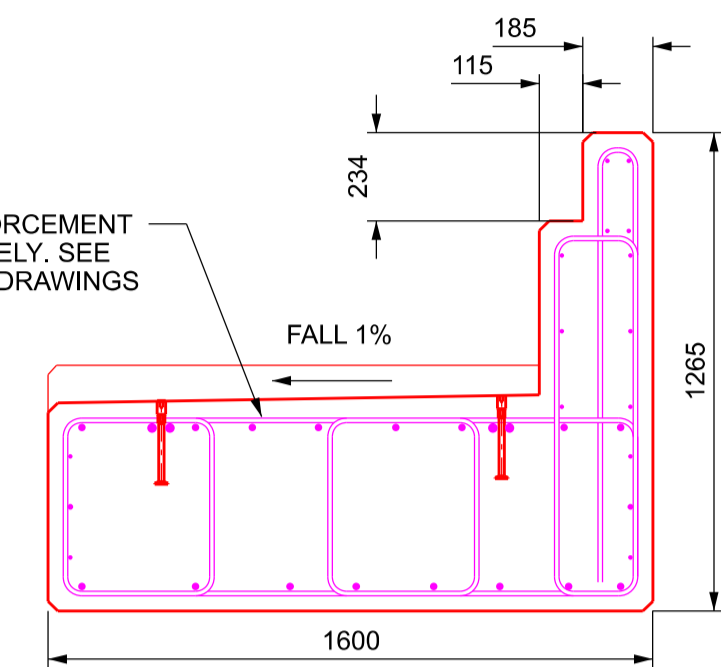
SECTION 1-1



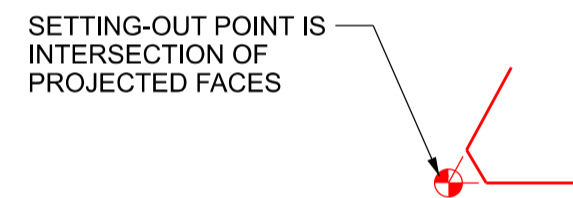
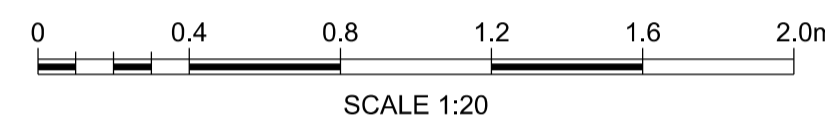
SECTION A-A



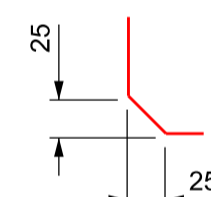
CILL BEAM REINFORCEMENT SHOWN INDICATIVELY. SEE REINFORCEMENT DRAWINGS



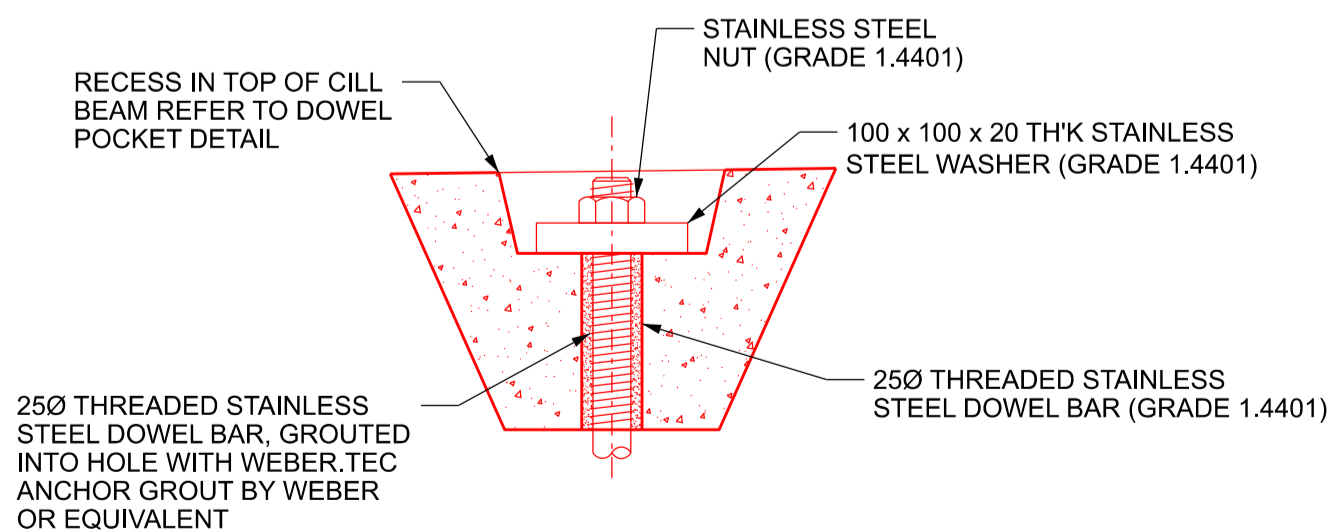
TYPICAL RC ARRANGEMENT



DETAIL OF SETTING OUT POINT



DETAIL OF CHAMFER TO ALL EDGES
SCALE 1:5



ENLARGED FIXING DETAIL

SCALE 1:5

Legend/Notes

1. FOR GENERAL NOTES REFER TO THE NOTES DRAWING :- 162906-CGE-WLS-DJP-DRG-ECV-000001.

PROPOSED CILL BEAM SETTING OUT		
SOPs	EASTINGS (m)	NORTHINGS (m)
C1	266061.696	297224.113
C2	266063.674	297223.814
C3	266062.442	297217.963
C4	266060.877	297218.293



SAFETY, HEALTH AND ENVIRONMENTAL INFORMATION
NOTES BELOW ARE ADDITIONAL TO HAZARDS/RISK NORMALLY ASSOCIATED WITH THIS TYPE OF WORK

CONSTRUCTION
CI. STEEL DECK & CILL BEAMS LIFTING DURING CONSTRUCTION WORKS
OII. ABUTMENT INSTABILITY DUE TO REFURBISHMENT WORKS ON THE ABUTMENT/WING WALLS
CIII. EXCAVATION/SLOPE COLLAPSE
OIV. UNDERMINING EXISTING ABUTMENT FOUNDATION
CV. STABILITY OF THE 'L' SHAPE RETENTION UNITS
CVI. UNFORESEEN GROUND CONDITIONS

OPERATIONAL & MAINTENANCE
OI. DISTURBING THE TRACK DURING WORKS
OII. WORKING AT HEIGHT. RISK OF PERSONNEL FALLING
OIII. PERSONAL INJURY TO WORKERS DUE TO CONTACT WITH TRAINS
OIV. SLIP/TRIP/FALLS DUE TO UNEVEN OR STEEP GROUND
OVI. DISTURBANCE TO LOCAL AREA AND ENVIRONMENT
OVI. CONTAMINATION TO ENVIRONMENT AND SPECIES
OVI. INJURY OR INFECTION DUE TO CONTACT TO HAZARDOUS MATERIAL
OVIII. DAMAGE TO SERVICE CABLES LAID ALONG THE BALLAST
OIX. PERSONAL INJURY DUE TO WORKING NEAR/ABOVE WATER
OX. BRIDGE/SCAFFOLD IMPACTED BY LARGE OBJECT DURING FLOODING EVENTS
OXI. ABUTMENT INSTABILITY DURING CONSTRUCTION WORKS
OXII. STABILITY FAILURE OF THE 'L' SHAPE RETENTION UNITS

DISMANTLING/DEMOLITION
DI. OVERTURNING OF ABUTMENT AFTER EXISTING DECK HAS BEEN REMOVED

THESE NOTES ARE BASED ON THE USE OF EXPERIENCED AND COMPETENT CONTRACTORS CARRYING OUT THE WORK USING AN APPROVED SAFE METHOD OF WORKING. A RESIDUAL RISK AND HAZARD DOCUMENT HAS BEEN CREAT FOR A MORE DETAILED ASSESSMENT.

B01	19/05/21	First Issue		CM	MG	SA
P01	29/03/21	First Issue		MM	MG	SA
Rev	Date	Description of Revisions	Drawn	Chkd	Appr	
Status					Suitability	
Fit for Internal Review & Comment						S3

Status Suitability
Fit for Internal Review & Comment S3



Authorised Contractor(s) Signed Date

Centregreat Rail

Location	ABERDOVEY, WALES, LL35 ORG		
Type	CAD Drawing	Sub-type	
Role	Civil Engineer	Sub-Role	Structures and Buildings
Zone	Wales Region		
Phasing	Grip Stage	5	
Region			

Western and Wales

Contract No.
162906

Contract Title
Pant Eidal Bridge

Drawing Title
PROPOSED GENERAL ARRANGEMENT OF WEST (HIGH MILEAGE) CILL BEAM

Designed	M. GOPAL	Signed	Electronically Signed	Date	29/03/21
Drawn	M. MITCHELL	Signed	Electronically Signed	Date	29/03/21
Checked	M. GOPAL	Signed		Date	
Approved	S. ALCON GENER	Signed		Date	

Scale(s)	ELR & Mileage	As Shown	81m 31.75ch to	0
Alternative Reference	162906-CGE-DRG-ECV-000007			Sheet
Drawing Number	162906-CGE-WLS-DJP-DRG-ECV-000007			of
				Revision
				B01