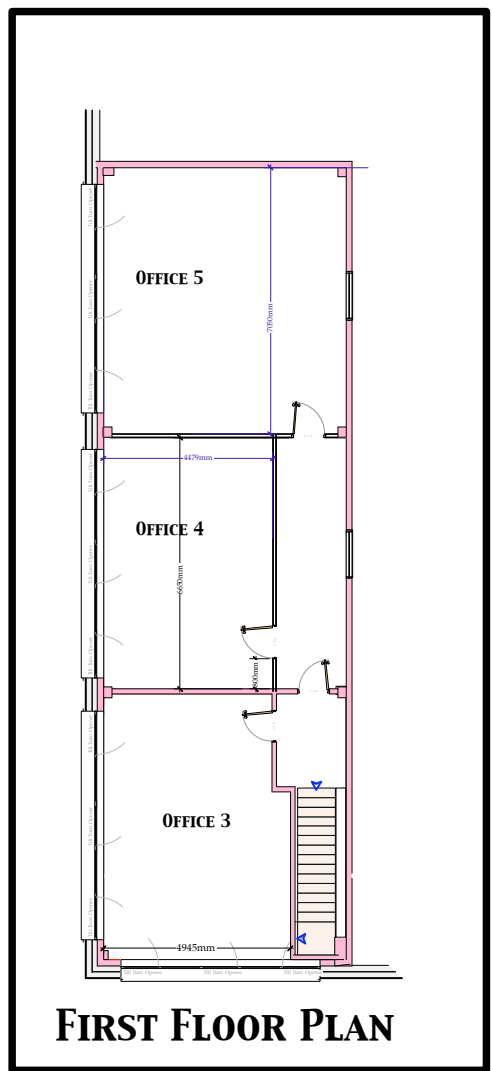


- NOTE - External treatment**
- ROOF - Existing Insulated Industrial metal cladding - No Change to material or Colour
 - WALLS - Existing Insulated Industrial metal cladding - No Change to material or Colour
 - JOINERY - Existing Powder coated metal fire doors & frames & Roller shutter doors
 - RAINWATER - Existing system - No Change
 - STELA DRYER - Galvanised (Silver) steel wal & Roof cladding
 - CHIMNEYS - Uniconfort - Satin finish (Silver) metal
 - FANS - Stela Dryer - Satin finish (Silver) metal
 - LOUVRES - McKenzie Martin Ltd - 112 Fixed Blade Louvres - Powder coated metal to match the colour of walls they are set in
 - VENTS - Black plastic louvre over 100mm dia extract pipe from pits
 - FRAME - Galvanised metal support steelwork



NB2

R. Arwel Davies & Co
Chartered Building Surveyors
Llwyn Derw, Prion, Denbigh, Denbighshire Tel 01745 890 635

Property

Unit B & C, Tir Llwyd Enterprise Park
Kinnel Bay, Nr Rhyl,
Sir Conwy, LL18 5JZ

Clients

Newbridge Energy Ltd

Project Title

Proposed Combined Heat & Power Unit
As Proposed Drawing

Drawing No.

2016/10/AP1/p

Scale

1/200

Date

25th Oct 2017

Drawn on A1 sheet by

R. Arwel Davies