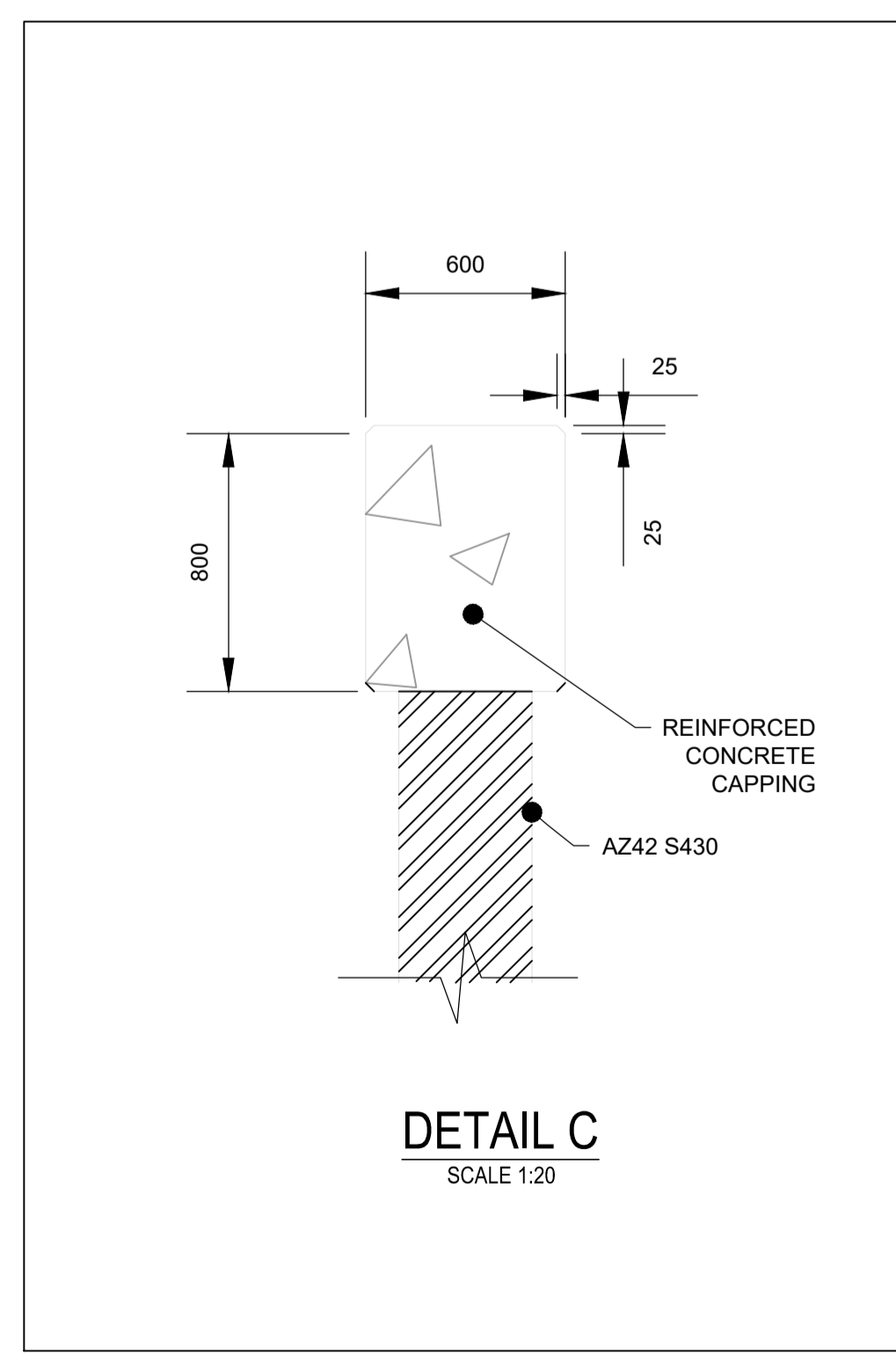
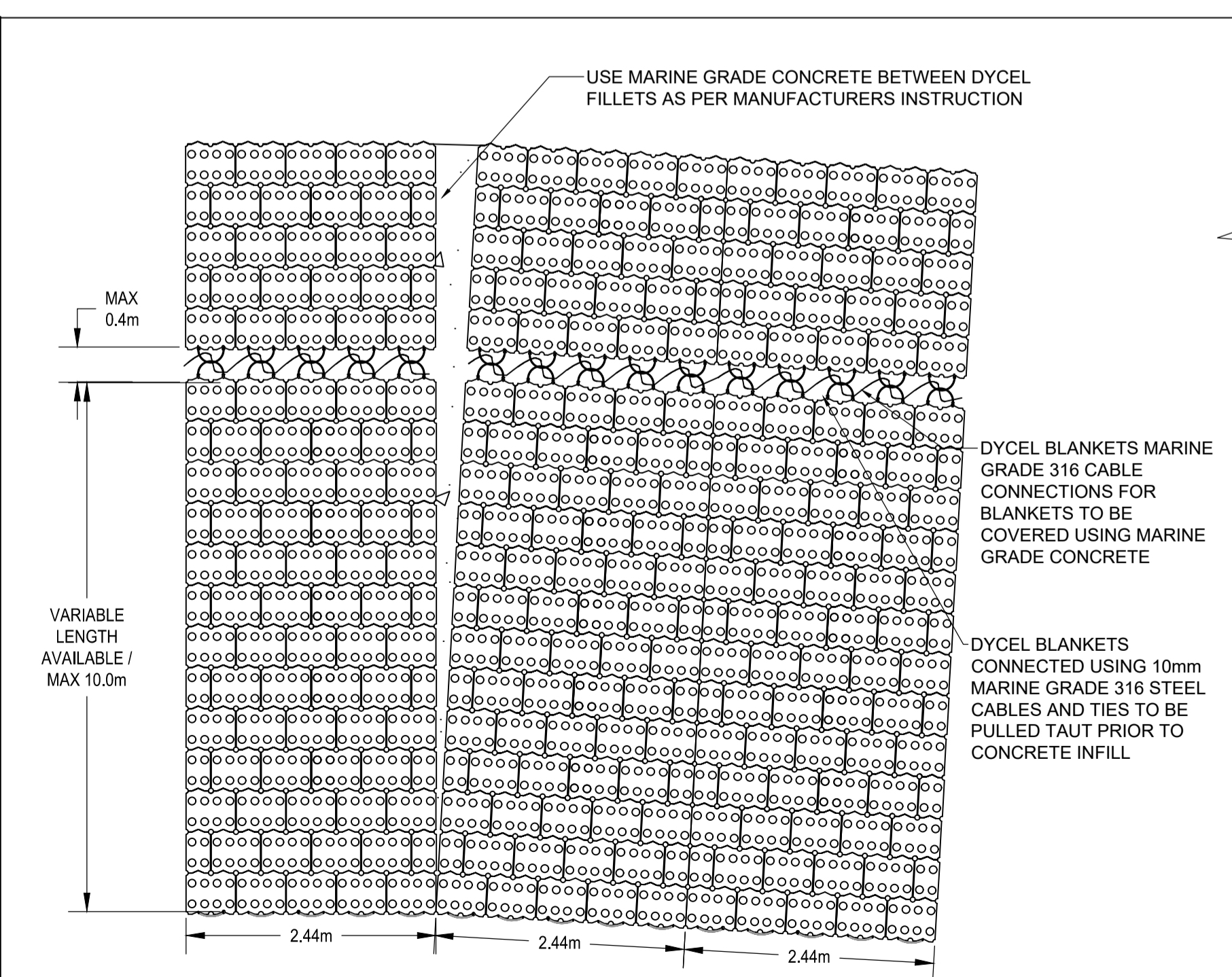


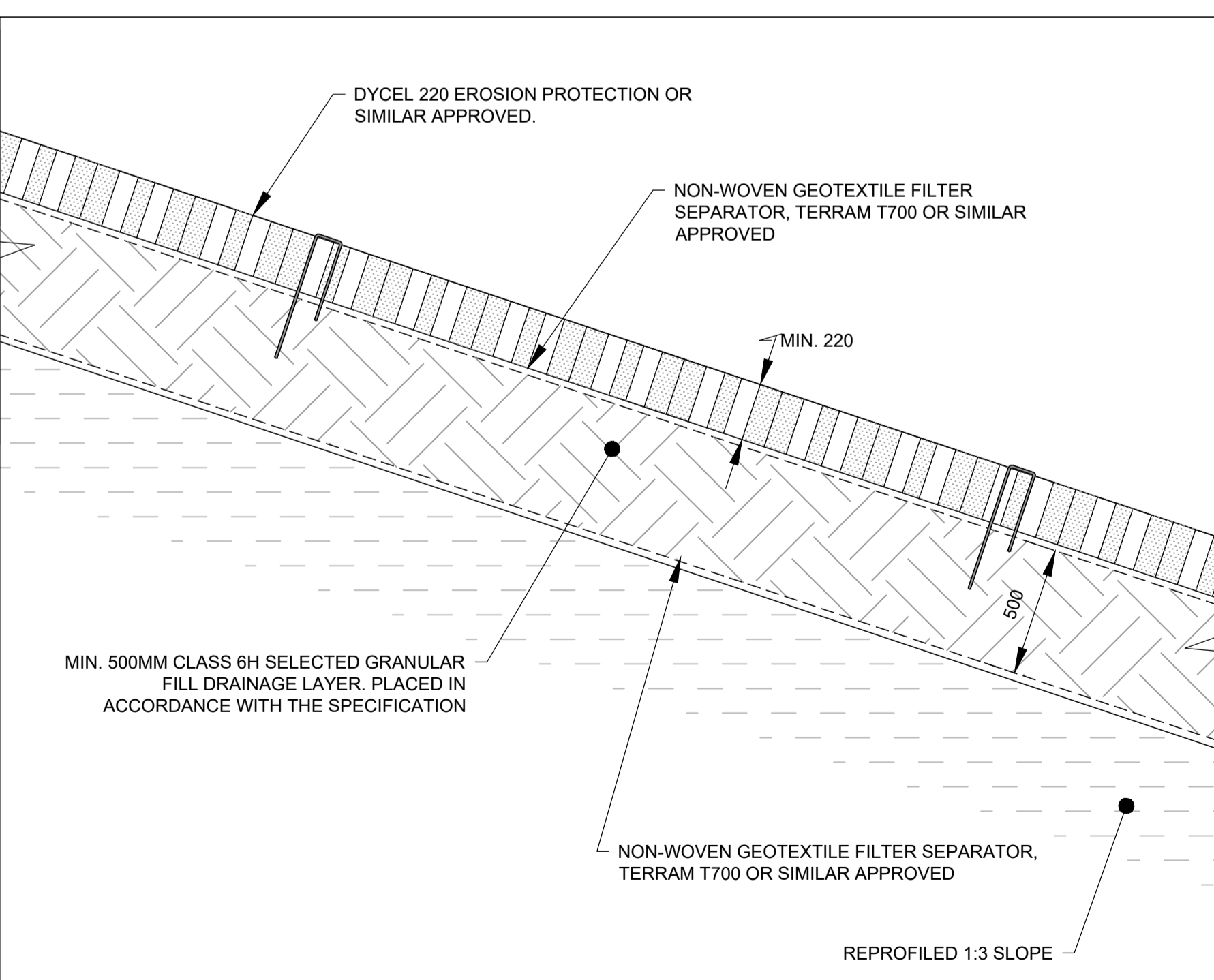
**TYPICAL SECTION 1**  
1:50 SCALE and a 3:1 SLOPE



**DETAIL C**  
SCALE 1:20



**DETAIL B**  
1:3 SLOPED DYCEL DETAIL  
SCALE 1:50



**DETAIL A**  
SCALE 1:20

- General Notes**
- All dimensions are shown in millimetres unless otherwise stated and levels are in metres to Ordnance Datum.
  - Do not scale from drawings.
  - Services shown from desktop utility search dated 2 April 2019 - BIM reference CCD-JBAU-00-00-RP-UT-0001-S2-P01.
  - Contains Ordnance Survey data © Crown copyright and database right 2020.
  - Drawing intended for consultation only - design may be subject to change.
  - Levels and contours shown on drawing are taken from the DTM provided by Future Aerial following their Drone Survey in 2016.
  - Exclusion zone for overhead power cables taken from 'Look Out! Look Up! a guide to the safe use of Mechanical Plant in the vicinity of electricity overhead lines' - true distance to be confirmed. Service providers are under consultation to establish safe working distances and methods during ground works.
  - Utilities shown at typical depths below ground surface - true depths to be confirmed.
  - For information relating to utilities, refer to utility plans and sections. See drawing list for complete list of drawings.
  - Cut / fill sections are taken from the project 3D model. For full construction details refer to drawings CCD-JBAU-00-32-DR-C-3220-3222 typical sections.
  - See drawings CCD-JBAU-00-32-DR-C-3201 to 3206 for setting out points and tables.

**Safety, Health and Environment information**

In addition to the hazards/risks normally associated with the types of work detailed on this drawing, note the following significant risks

Construction	
CON6	Excavation works stability
CON9	Lifting operations
CON11	Sheet piling risk to services
CON14	Public rights of way
CON15	Navigation collision risk
CON16	Disrupting and endangering traffic flow
CON28	Electricity investigations under works
CON29	Narrow & steep embankment widths by road
CON31	Water trunk main under works at Outfalls to be protected
CON32	Vodafone & Surf Telecom at pile line

**NOT FOR CONSTRUCTION**

Comments									
Rev.:	Date	Drawn	Designed	Checked	Approved				
Comments									
Rev.:	Date	Drawn	Designed	Checked	Approved				
Comments									
P01 FOR COMMENT									
Rev.:	Date	Drawn	SC	Designed	DY	Checked	RG	Approved	GK
Client Approval									
A - Approved									
B - Approved with Revisions									
C - Do Not Use									
Purpose of Issue								Status	
Detailed Design for comment								S3	

**JBA consulting**

35 Perrymount Road  
HAYWARDS HEATH  
West Sussex  
RH16 3BW  
United Kingdom

www.jbaconsulting.com  
+44 (0)1444 473652  
+44 (0)845 8627772  
info@jbaconsulting.com

Offices at Colleshill, Doncaster, Edinburgh, Haywards Heath, Leeds, Limerick, Newcastle upon Tyne, Newport, Saltire, Skipton, Tadcaster, Thirsk, Wallingford and Warrington

**CARDIFF COASTAL DEFENCES**

**TYPICAL SECTIONS  
LOCATION 32  
SLOPE 1:3 DETAIL**



This document is the property of Jeremy Benn Associates Ltd. It shall not be reproduced in whole or in part, nor disclosed to a third party, without the permission of Jeremy Benn Associates Ltd.

Scale:	Drawn: S. Connery	23/06/21
	Designed: D. Yeomans	23/06/21
	Checked: R. Grinham	23/06/21
	Approved: G. Kenn	23/06/21
Digital File Name:	CCD-JBAU-00-32-DR-C-3250	
Drawing Number:	CCD-JBAU-00-32-DR-C-3250	Revision P01