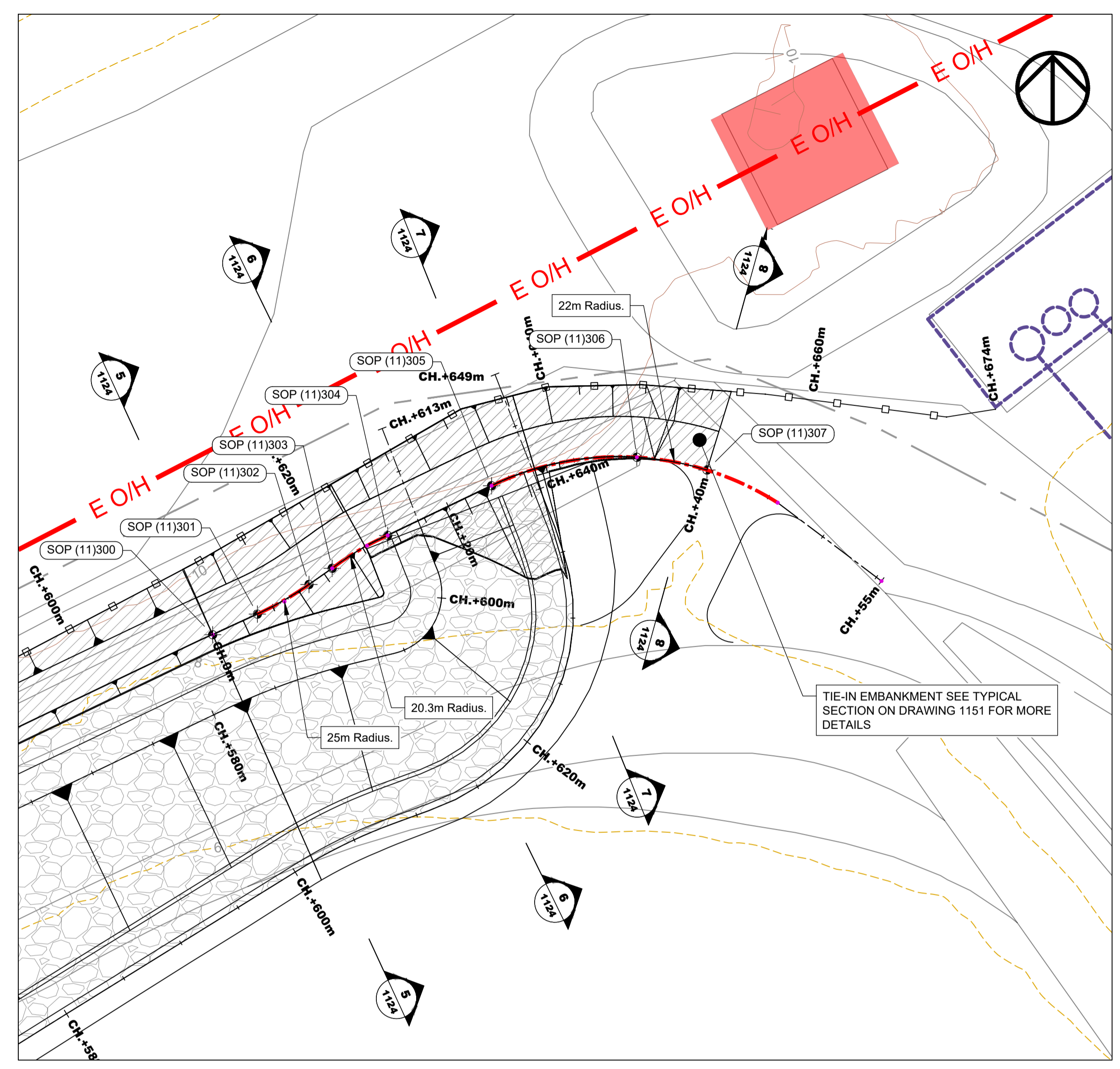
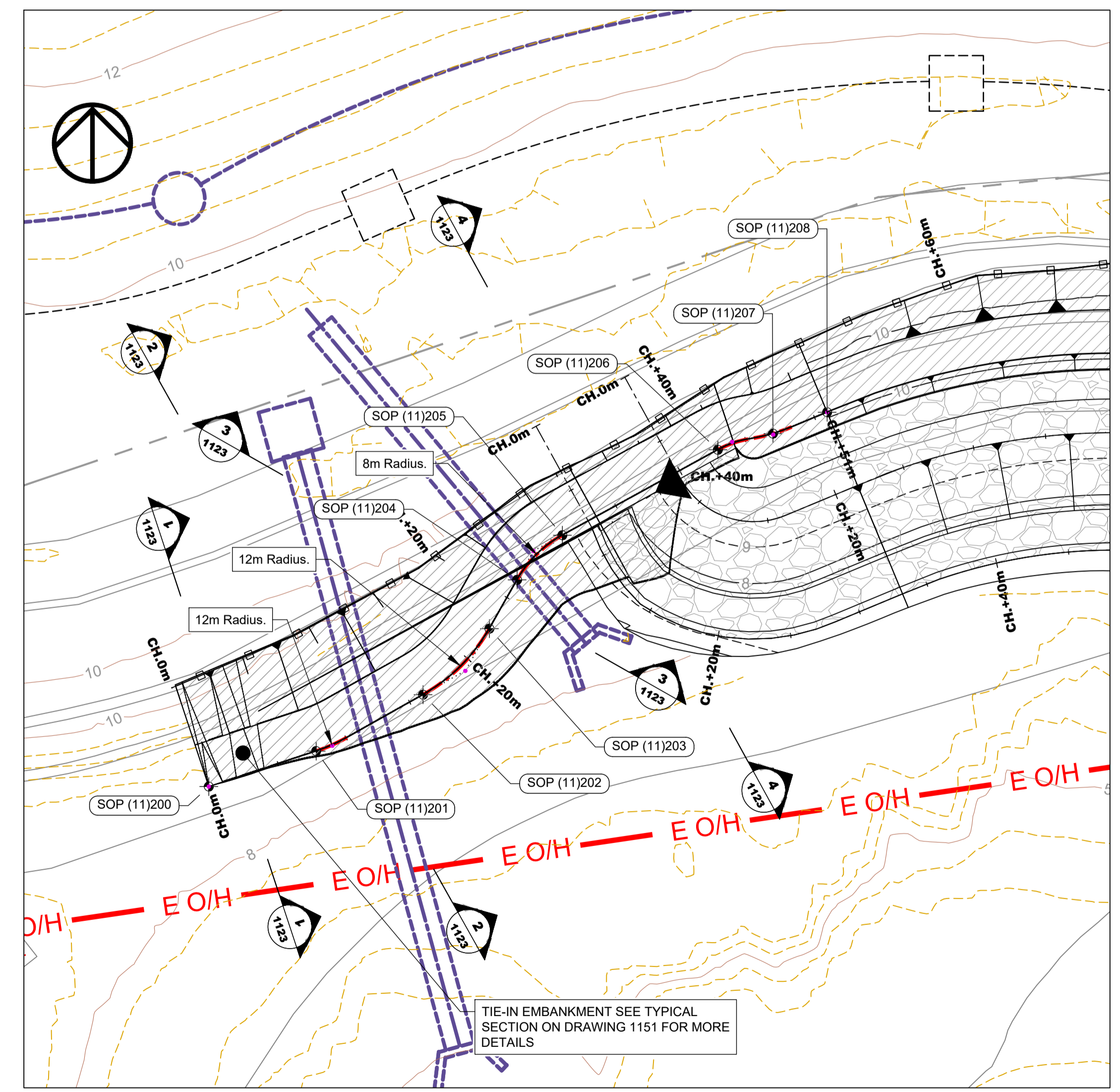


SETTING OUT POINTS CO-ORDINATES			
REFERENCE	EASTING (m)	NORTHING (m)	LEVEL (m OD)
SOP 300(11)	322673	177758	+10.57
SOP 301(11)	322676	177759	+10.17
SOP 302(11)	322680	177761	+10.19
SOP 303(11)	322682	177763	+10.20
SOP 304(11)	322686	177765	+10.22
SOP 305(11)	322693	177769	+10.38
SOP 306(11)	322704	177771	+10.24
SOP 307(11)	322710	177770	+9.77



INSET B - EASTERN EMBANKMENT TIE-IN
 SCALE 1:250
 SEE DRAWING NUMBER: CCD-JBAU-00-11-DR-C-1105
 FOR MORE INFORMATION

SETTING OUT POINTS CO-ORDINATES			
REFERENCE	EASTING (m)	NORTHING (m)	LEVEL (m OD)
SOP 200(11)	322126	177601	+8.30
SOP 201(11)	322134	177603	+8.47
SOP 202(11)	322141	177607	+8.89
SOP 203(11)	322146	177612	+9.21
SOP 204(11)	322148	177615	+9.40
SOP 205(11)	322151	177618	+9.62
SOP 206(11)	322161	177624	+10.15
SOP 207(11)	322165	177625	+10.15
SOP 208(11)	322169	177627	+10.15



INSET A - WESTERN EMBANKMENT TIE-IN
 SCALE 1:250
 SEE DRAWING NUMBER: CCD-JBAU-00-11-DR-C-1101
 FOR MORE INFORMATION

Safety, Health and Environment Information

In addition to the hazards/risks normally associated with the types of work detailed on this drawing, note the following significant risks

Code	Symbol	Description
CON2	⚠	Works in an exposed and tidal environment
CON3	⚠	Soft and muddy coastal foreshore
CON6	⚠	Excavation works stability
CON7	⚠	Lifting operations
CON13	⚠	Public interface
CON29	⚠	Overhead hi-voltage cables
CON30	⚠	Buried utilities / infrastructure

Operations & Maintenance		
O&M1	⚠	Overtopping risk
O&M4	⚠	Erosion due to loss of vegetation cover

Environment		
ENV8	⚠	Exposing tip waste
ENV9	⚠	Movement of tip waste into dynamic environment
ENV10	⚠	Environmental designations affecting works

- General Notes**
- All dimensions are shown in millimetres unless otherwise stated and levels are in metres to Ordnance Datum.
 - Do not scale from drawings.
 - Works and working methods shall conform with all relevant permits and adhere to the pollution prevention guidelines.
 - Drawings shall be read in conjunction with the project specification.
 - Levels and contours shown on the drawings are taken from the DTM provided by Future Aerial following their Drone Survey in 2016.
 - Beach levels may vary from those shown due to natural coastal processes.
 - For information relating to utilities, refer to utility plans and sections. See drawing list for complete list of drawings.
 - Cut / fill sections are taken from the project 3D model. For full construction details refer to the relevant typical sections.
 - See drawings CCD-JBAU-00-11-DR-C-1150 and CCD-JBAU-00-11-DR-C-1151 for typical sections.
 - See drawings CCD-JBAU-00-11-DR-C-1101 to 1106 for setting out points, setting out point tables are found in drawings CCD-JBAU-00-11-DR-C-1106 to 1108.

Drawing Key	SYMBOL	ABBREVIATION
		INDICATIVE LOCATION OF CAPPED LANDFILL SITE

NOT FOR CONSTRUCTION

Comments					
Rev.:	Date	Drawn	Designed	Checked	Approved
Comments					
Rev.:	Date	Drawn	Designed	Checked	Approved
Comments					
Rev.:	Date	Drawn	Designed	Checked	Approved

Client Approval

A - Approved
 B - Approved with Revisions
 C - Do Not Use

Purpose of Issue	Status
Detailed Design for Comment	S3

JBA consulting

35 Perrymount Road
 HAYWARDS HEATH
 West Sussex
 RH16 3BW
 United Kingdom

www.jbaconsulting.com
 +44 (0)1444 473652
 +44 (0)845 8627772
 info@jbaconsulting.com

Offices at: Colleshill, Doncaster, Edinburgh, Haywards Heath, Leeds, Limerick, Newcastle upon Tyne, Newport, Salford, Skipton, Tadcaster, Thirk, Wallingford and Warrington

CARDIFF COASTAL DEFENCES

ROCK ARMOUR EMBANKMENT TIE-INS SETTING-OUT LOCATION 11



This document is the property of Jeremy Benn Associates Ltd. It shall not be reproduced in whole or in part, nor disclosed to a third party, without the permission of Jeremy Benn Associates Ltd.

Scale:	Drawn: S.Connelly	17/05/21
1:250 @ A1	Designed: D. Potts	17/05/21
	Checked: G. Kenn	17/05/21
	Approved: G. Kenn	17/05/21

Digital File Name:	CCD-JBAU-00-11-DR-C-1106
Drawing Number:	CCD-JBAU-00-11-DR-C-1106
Revision:	P01

