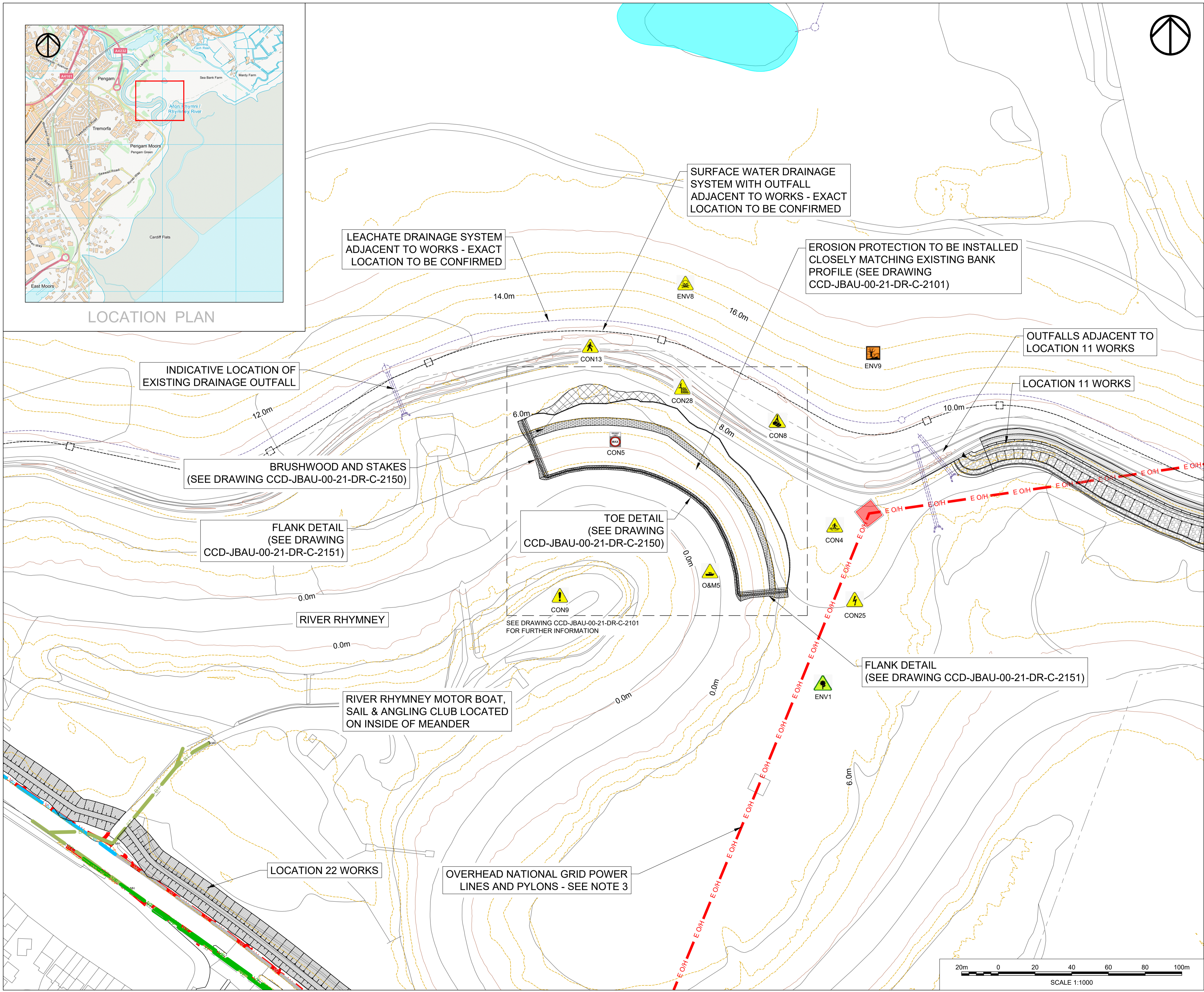




LOCATION PLAN



Safety, Health and Environment information

In addition to the hazards/risks normally associated with the types of work detailed on this drawing, note the following significant risks

Construction	
CON4	Soft ground
CON5	Excavation works stability
CON8	Lifting operations
CON9	Dust, noise and vibrations
CON13	Public access
CON25	Overhead hi-voltage cables
CON28	Working in/near water
Operations & Maintenance	
O&M5	Alterations to navigated watercourse
Environment	
ENV1	Special Protection Area
ENV8	Exposing tip waste
ENV9	Movement of tip waste into dynamic environment

- General Notes**
- All dimensions are shown in millimetres unless otherwise stated and levels are in metres to Ordnance Datum.
 - Do not scale from drawings.
 - For information relating to utilities refer to utility plans and sections.
 - Contains Ordnance Survey data © Crown copyright and database right 2020.
 - Levels and contours shown on drawing are taken from the DTM provided by Future Aerial following their Drone Survey in 2016.
 - See drawing CCD-JBAU-00-21-DR-C-2150 for typical section.
 - Drawings shall be read in conjunction with the project specification.
 - River levels may vary from those shown due to natural fluvial processes.
 - Works and working methods shall conform with all relevant permits and adhere to the pollution prevention guidelines.

UTILITY SERVICES INVESTIGATION GAUGE TO PAS 128

TYPE D	TYPE C	TYPE B	TYPE A
02/04/19			

THE POSITION OF ANY EXISTING PUBLIC OR PRIVATE SEWERS, UTILITY SERVICES, PLANT OR APPARATUS SHOWN ON THIS DRAWING HAS BEEN OBTAINED FROM STATUTORY RECORDS. THE INFORMATION SHOWN IS BELIEVED TO BE CORRECT BUT NO WARRANTY TO THIS IS EXPRESSED OR IMPLIED. OTHER SUCH PLANT OR APPARATUS MAY ALSO BE PRESENT BUT NOT SHOWN. INVESTIGATIONS SHOULD BE UNDERTAKEN ON SITE CONFIRMING LOCATIONS BEFORE BREAKING GROUND.

NOT FOR CONSTRUCTION

Rev.:	Date	Drawn	Designed	Checked	Approved

Client Approval

A - Approved
B - Approved with Revisions
C - Do Not Use

Purpose of Issue: Detailed design - for comment
Status: S3

JBA consulting

35 Perrymount Road
HAYWARDS HEATH
West Sussex
RH16 3BW
United Kingdom

www.jbaconsulting.com
+44 (0)1444 473652
+44 (0)1445 862772
info@jbaconsulting.com

CARDIFF COASTAL DEFENCES

EROSION PROTECTION WORKS
LOCATION 21
HAZARD AND LOCATION PLAN

for

This document is the property of Jeremy Benn Associates Ltd. It shall not be reproduced in whole or in part, nor disclosed to a third party, without the permission of Jeremy Benn Associates Ltd.

Scale:	Drawn: J. Moores	17/05/21
1:1000 @ A1	Designed: J. Villagra Sar	17/05/21
Digital File Name: CCD-JBAU-00-21-DR-C-2100	Checked: D. Potts	17/05/21
Drawing Number: CCD-JBAU-00-21-DR-C-2100	Approved: G. Kenn	17/05/21
	Revision	P01

