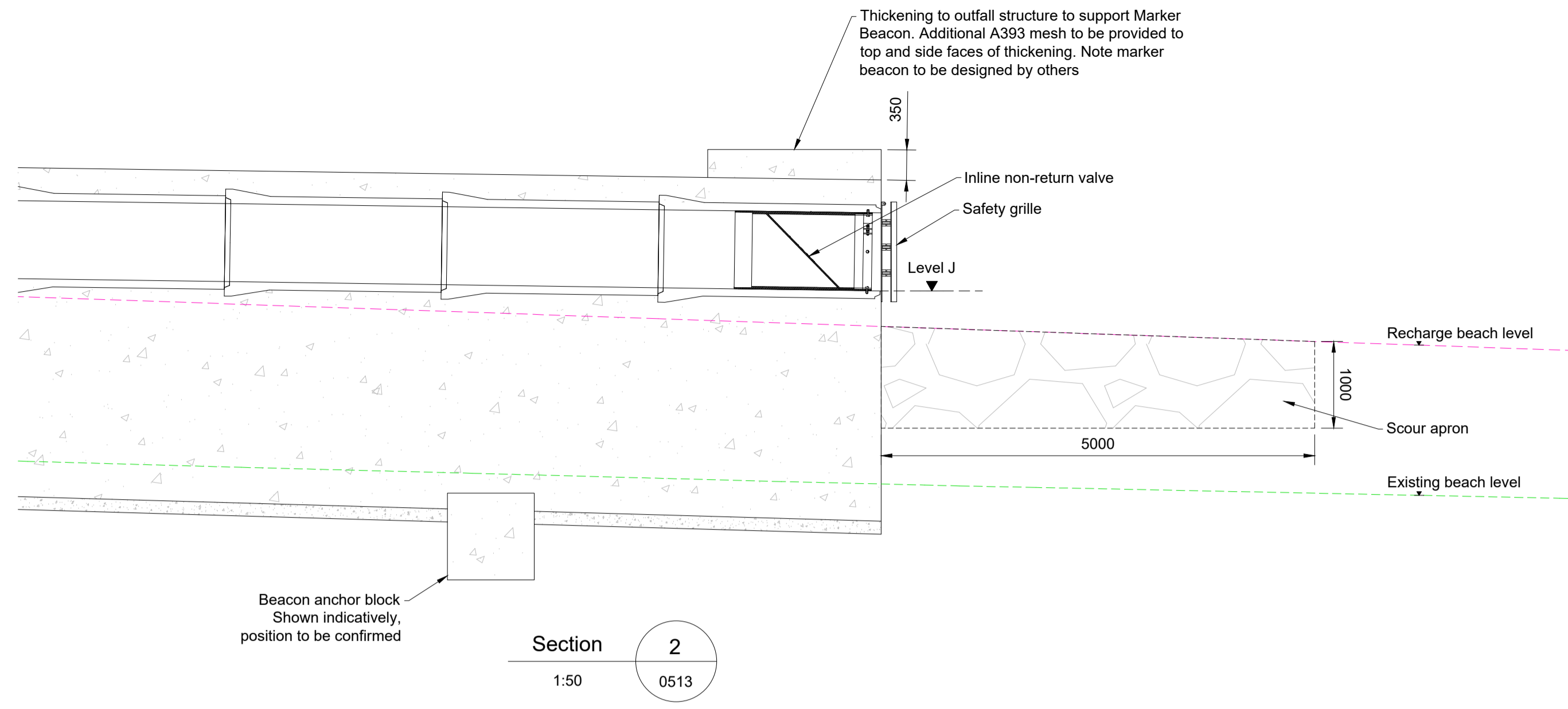


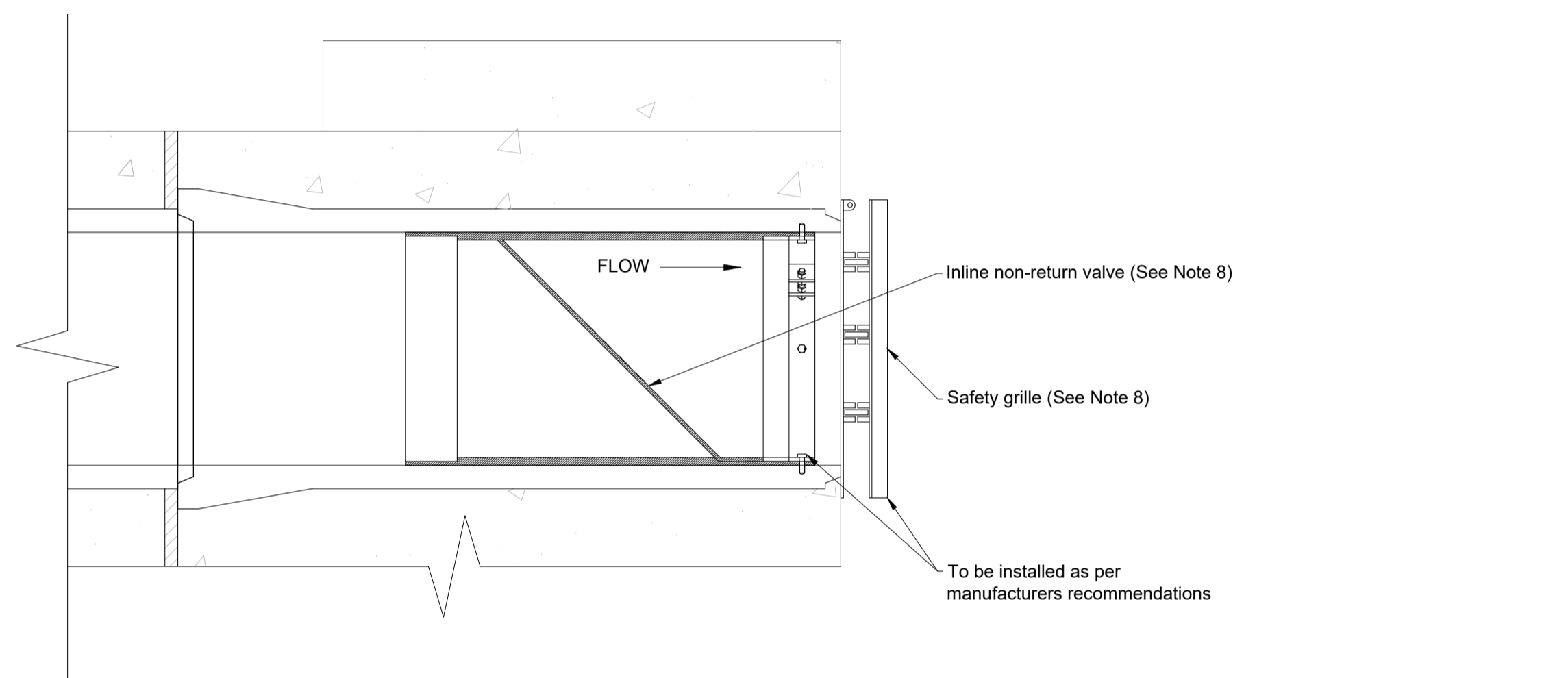
**Outfall Extension End Detail
Plan View
1:50**

Outfall	Dim A	Dim B	Dim C	Level J	Gradient
3 - Cayley Promenade South Outfall	800	1575	1975	0.50	1 in 80
West Promenade New Outfall	500	1235	1635	0.40	1 in 100
5 - Cayley Promenade North Outfall	525	1260	1660	0.40	1 in 100

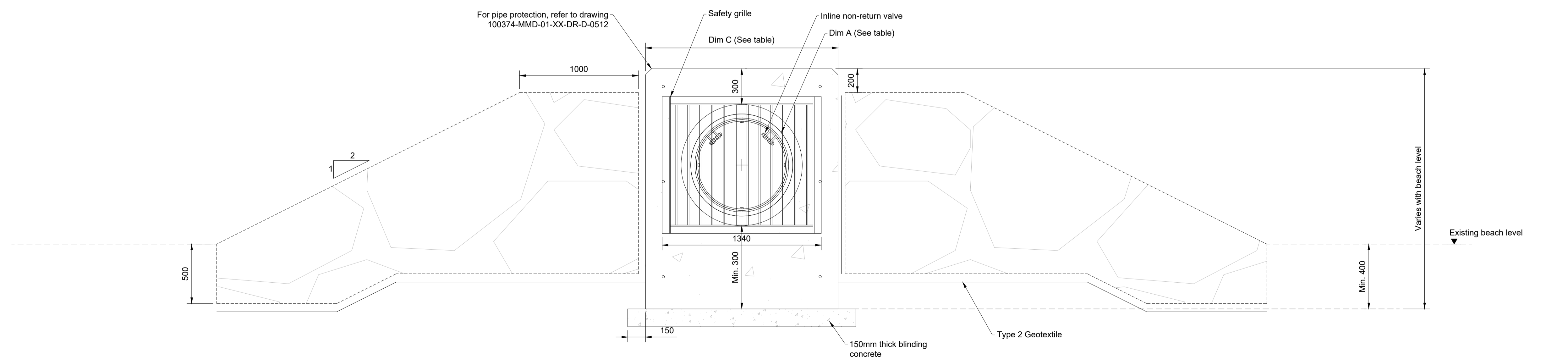
All levels to be confirmed on site prior to construction



**Section 2
1:50**



**Outfall Extension End Detail
Non-Return Valve
1:20**



**Outfall Extension End
Front Elevation
1:20**

- Notes**
- All dimensions are in millimetres unless stated otherwise.
 - All levels shown are in metres above ordnance datum (mAOD).
 - Do not scale any items or information from this drawing.
 - This drawing is to be read in conjunction with all related drainage, highways and landscape drawings and standards.
 - This drawing should be read in conjunction with document 100374-MMD-00-XX-RP-C-0001 MCHW Specification.
 - Any drawing errors or discrepancies should be brought to the attention of Mott MacDonald prior to commencement of construction.
 - Drawing to be read in conjunction with drawings 100374-MMD-01-XX-DR-D-0510, 100374-MMD-01-XX-DR-D-0511 and 100374-MMD-01-XX-DR-D-0512.
 - Inline non-return valve (Tieflex Checkmate Inline Valve) and outfall safety grille (Type 1) details provided by Althion.
 - All details require approval by DCWW following further consultation.

Key to symbols

DRAFT

Reference drawings

100374-CEUK-66-2010-03-02-T - Proposed Beach Arrangements
 100374-CEUK-66-2010-05-02-T - Typical Beach Recharge Cross Section
 100374-CEUK-66-2010-06-02-T - Rhos-on-Sea Terminal Groyne Modification
 100374-MMD-01-XX-DR-D-0510 - Outfall Location Plan
 100374-MMD-01-XX-DR-D-0511, 0512 - Outfall Typical Details

Rev	Date	MB	Drawn	Issued for Comment	OD	NH
P01	26/07/21	MB	Drawn	Issued for Comment	OD	NH

For Information

MOTT MACDONALD

Mott MacDonald House
 5 Woodland Road West
 Colwyn Bay
 LL29 7DH
 United Kingdom
 T +44 (0)1492 534601
 F -
 W www.mottmac.com

Client

CONWY
 CYNGOR BWRDEISTREF SIROL
 COUNTY BOROUGH COUNCIL

Title

Colwyn Bay Waterfront Phase 2b
 End of Outfall Extension
 Typical Details

Sheet 2 of 2

Designed	I.LOCEN	IO	Eng check	O.DAWES	OD
Drawn	M.BUTLER	MB	Coordination	A.BARROWMAN	AB
Dwg check	O.DAWES	OD	Approved	N.HAINES	NH
MMD Project Number	100374	Scale at A1	AS SHOWN	Security	STD
Suitability Description	Suitable for Information			Suit. Code	S2
Drawing Number	100374-MMD-01-XX-DR-D-0513			Revision	P01

