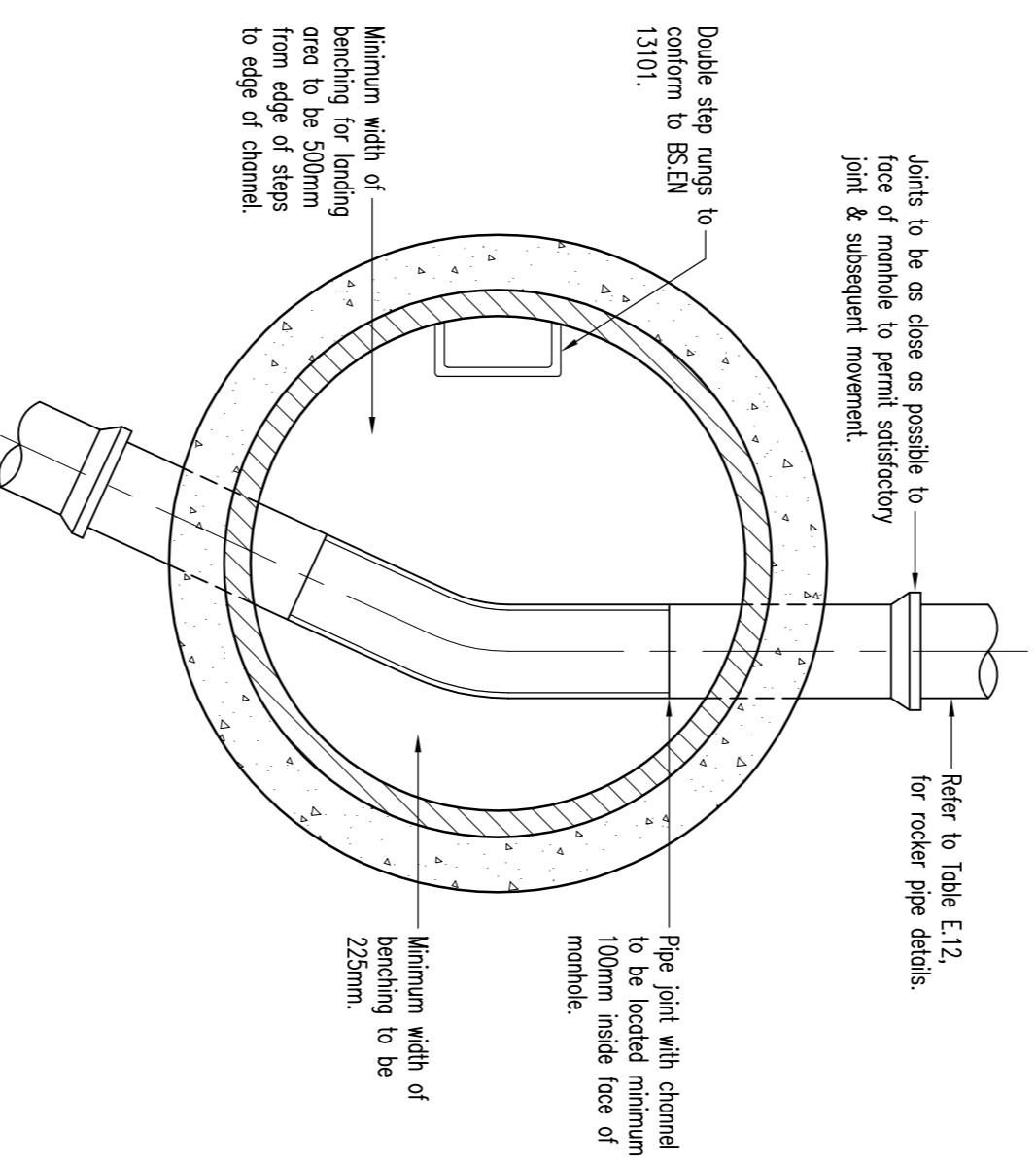
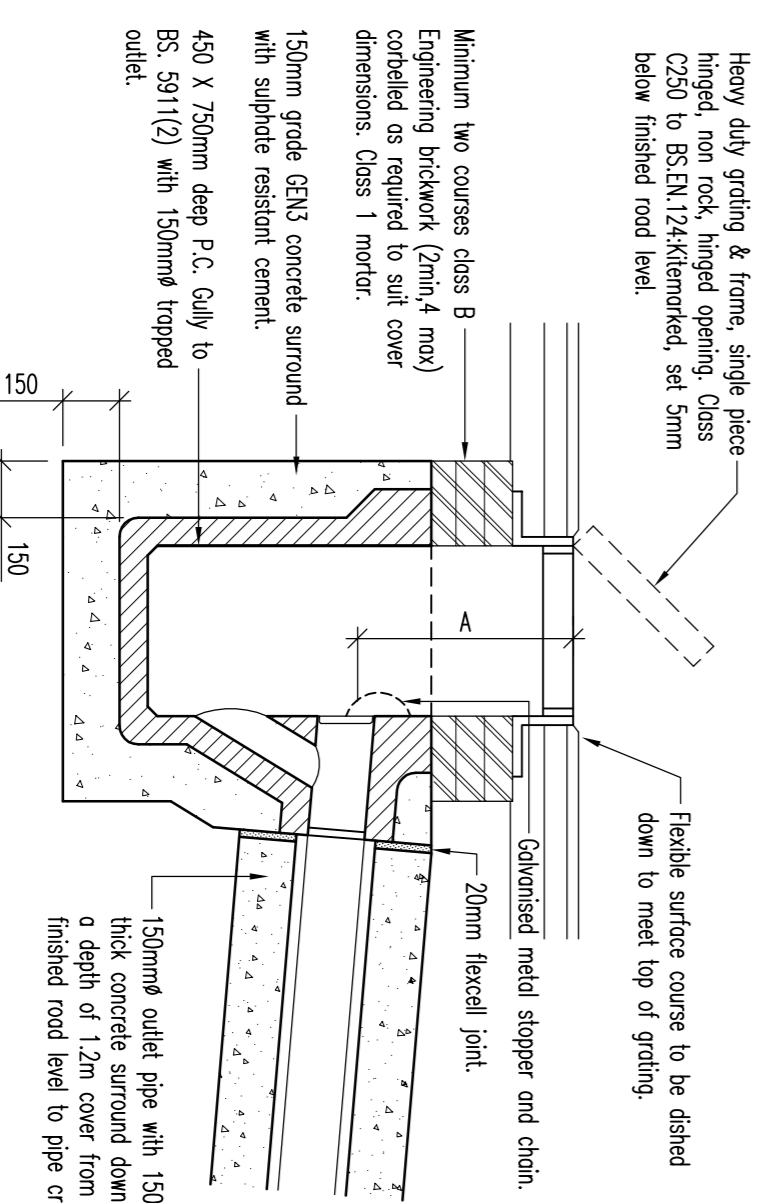


SECTIONAL ELEVATION

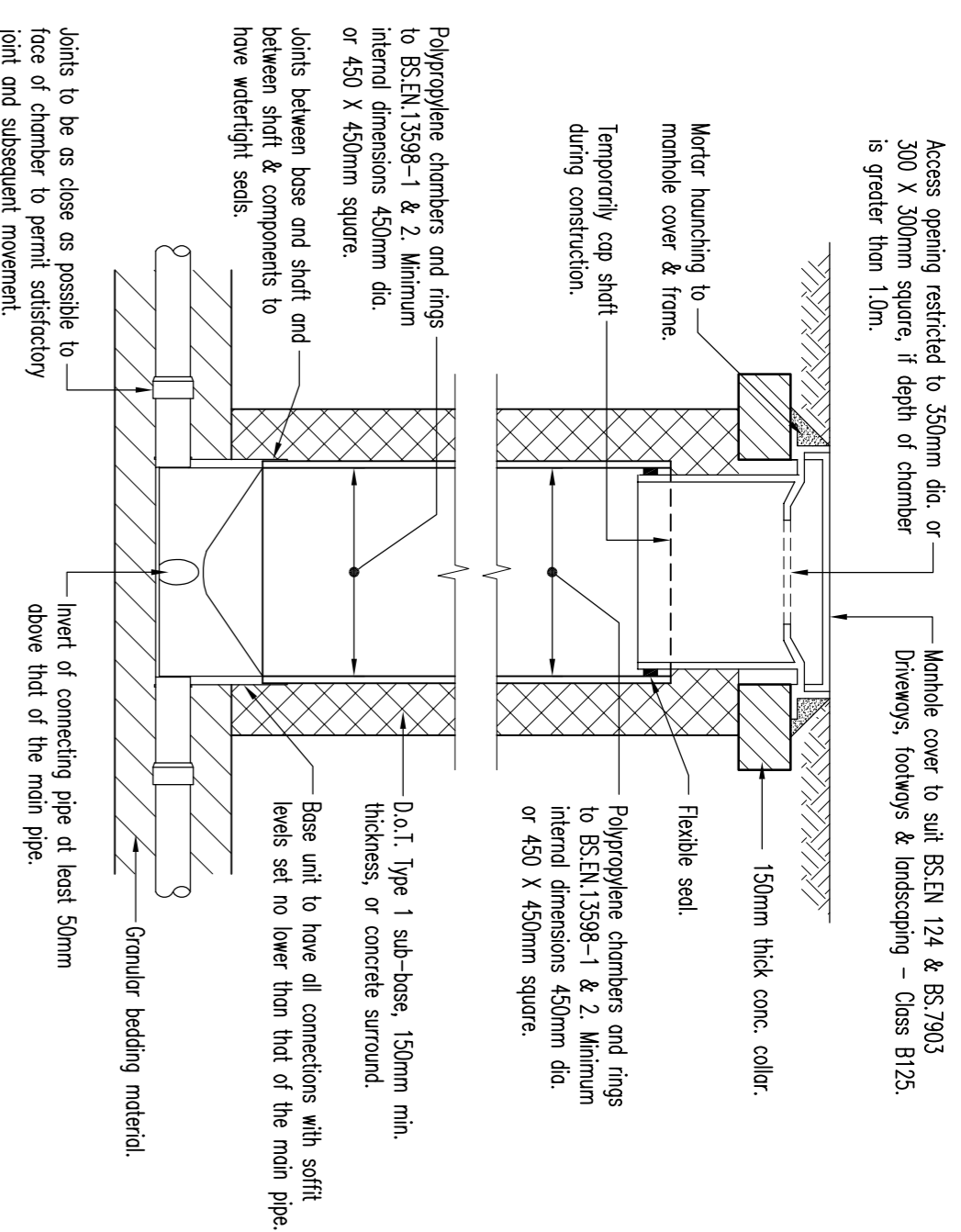


SECTIONAL PLAN

TYPICAL CONCRETE MANHOLE DETAIL (TYPE 2)  
(DEPTH TO SOFFIT UP TO 3.0M)

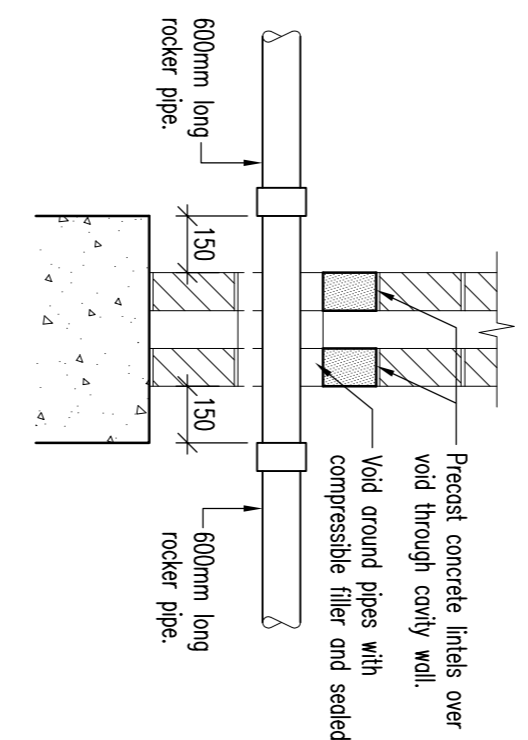


GULLY SECTION DETAIL



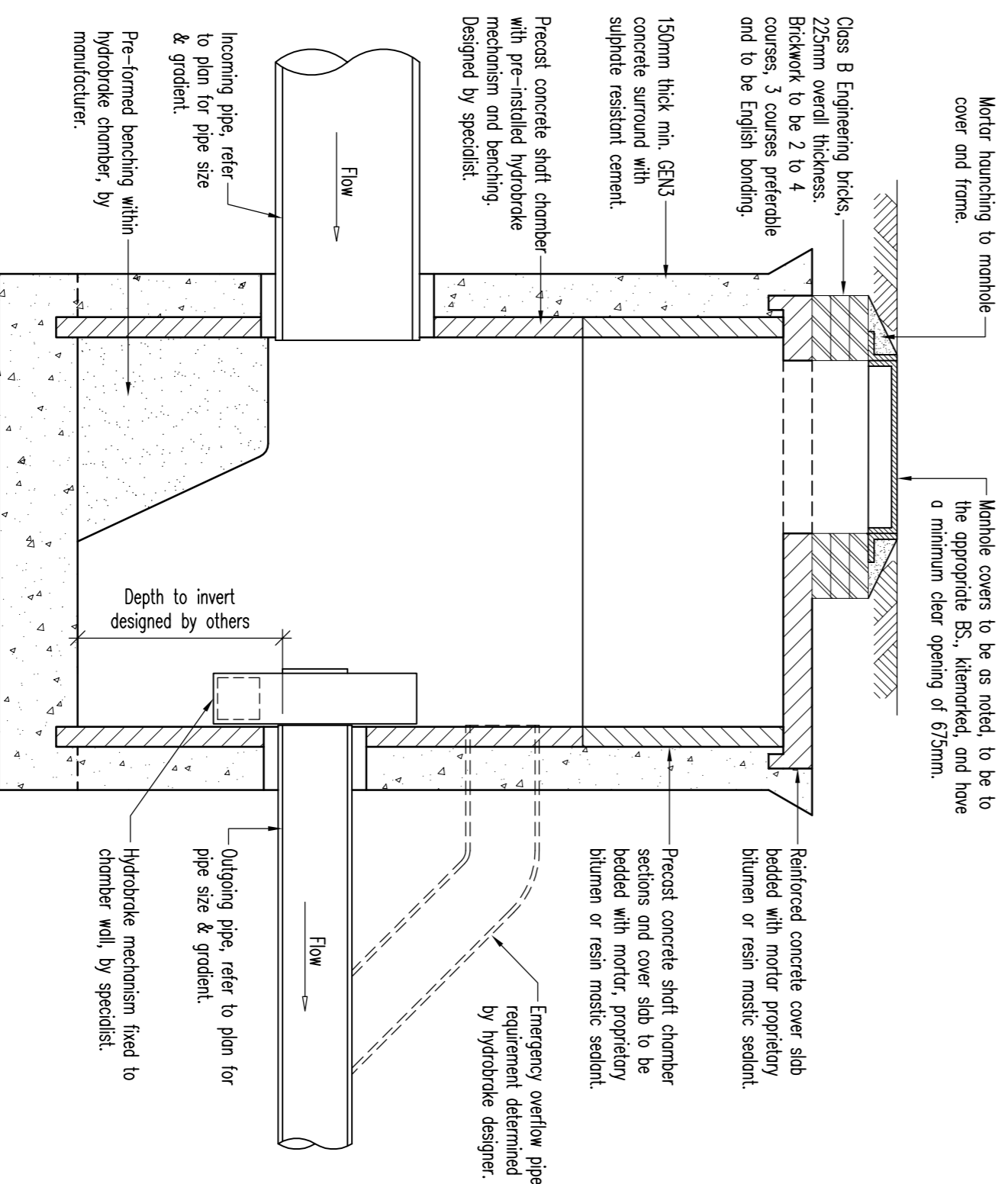
TYPICAL POLYPROPYLENE INSPECTION CHAMBER DETAIL

(DEPTH TO SOFFIT LESS THAN 3.0M - SITED IN DOMESTIC DRIVEWAY OR FOOTWAY)



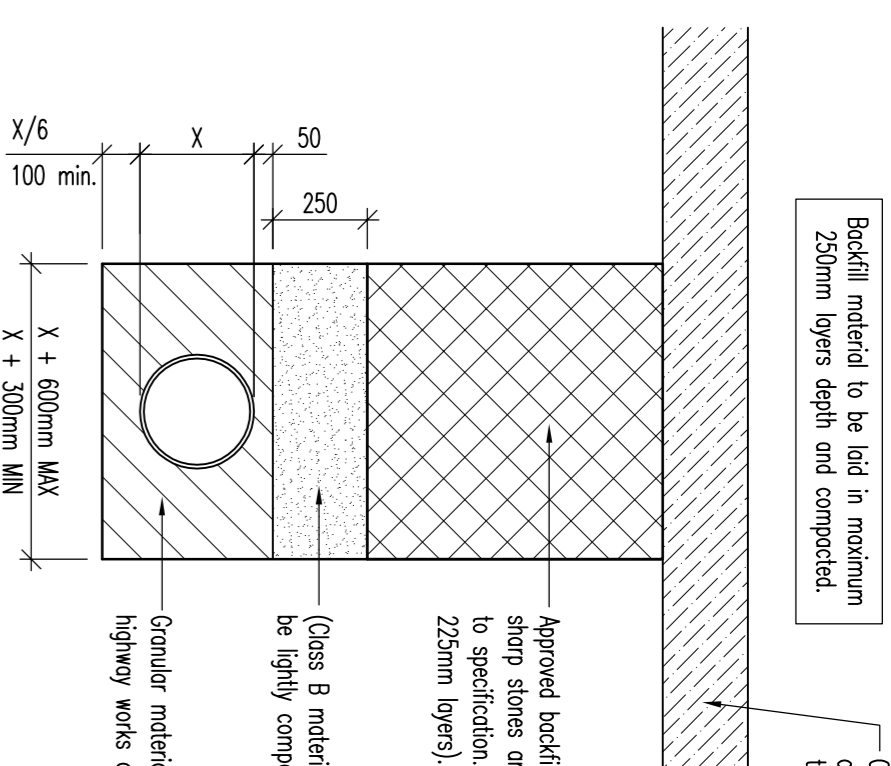
SERVICE PIPE THROUGH CAVITY WALL

RODDING ACCESS POINT DETAIL



TYPICAL HYDROBRAKE CHAMBER

(SECTIONAL ELEVATION)



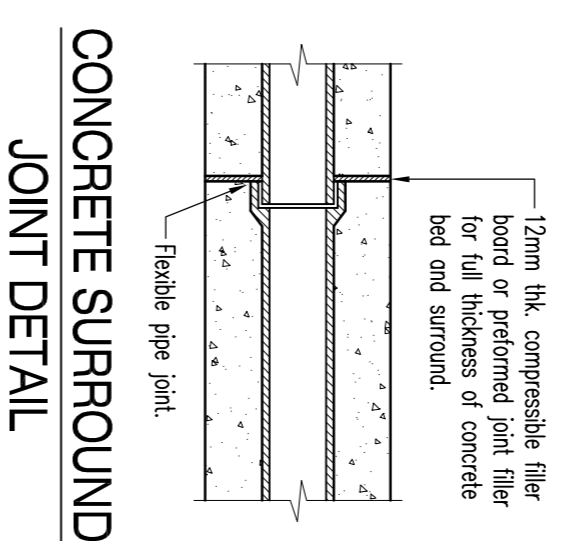
TYPICAL PIPE BEDDING DETAIL

GRANULAR BED & SURROUND (COVER > 1.2m TO CROWN UNDER ROADS & FOOTPATHS)

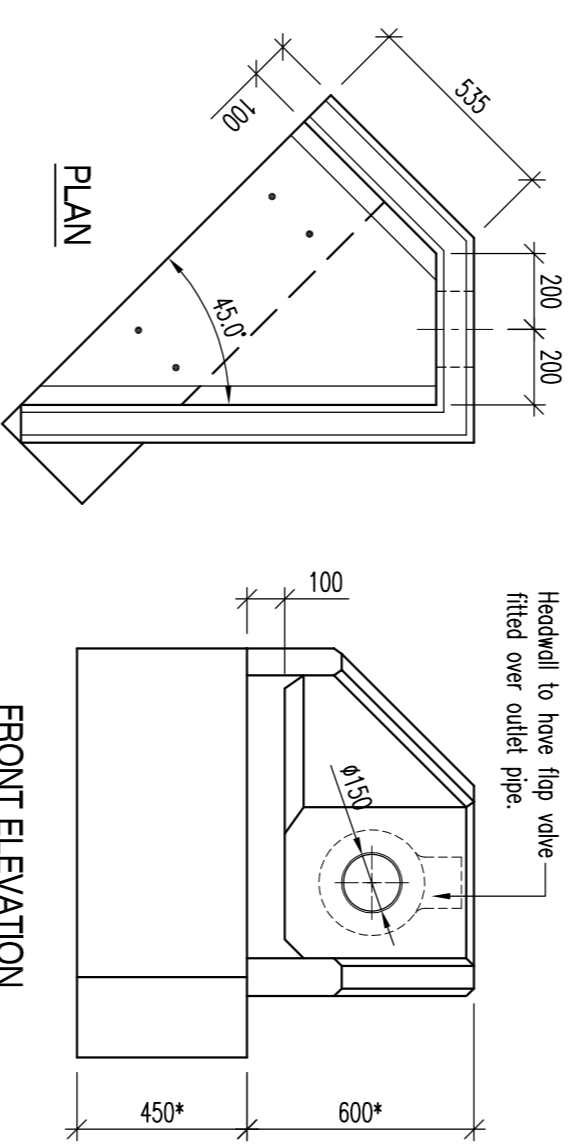
CONCRETE ENCASED TYPICAL PIPE BEDDING DETAIL (COVER < 1.2m TO CROWN UNDER ROADS & FOOTPATHS)

PIPE DIAMETER	GRANULAR MATERIAL SIZE
100mm	10mm nominal single size
150mm	10mm or 14mm nominal single size
150mm - 300mm	10mm, 14mm or 20mm nominal single size
OVER 300mm	10mm, 14mm, 20mm or 40mm single size

Note: Granular material for bedding and siltfall to conform to BS EN 12602:2002



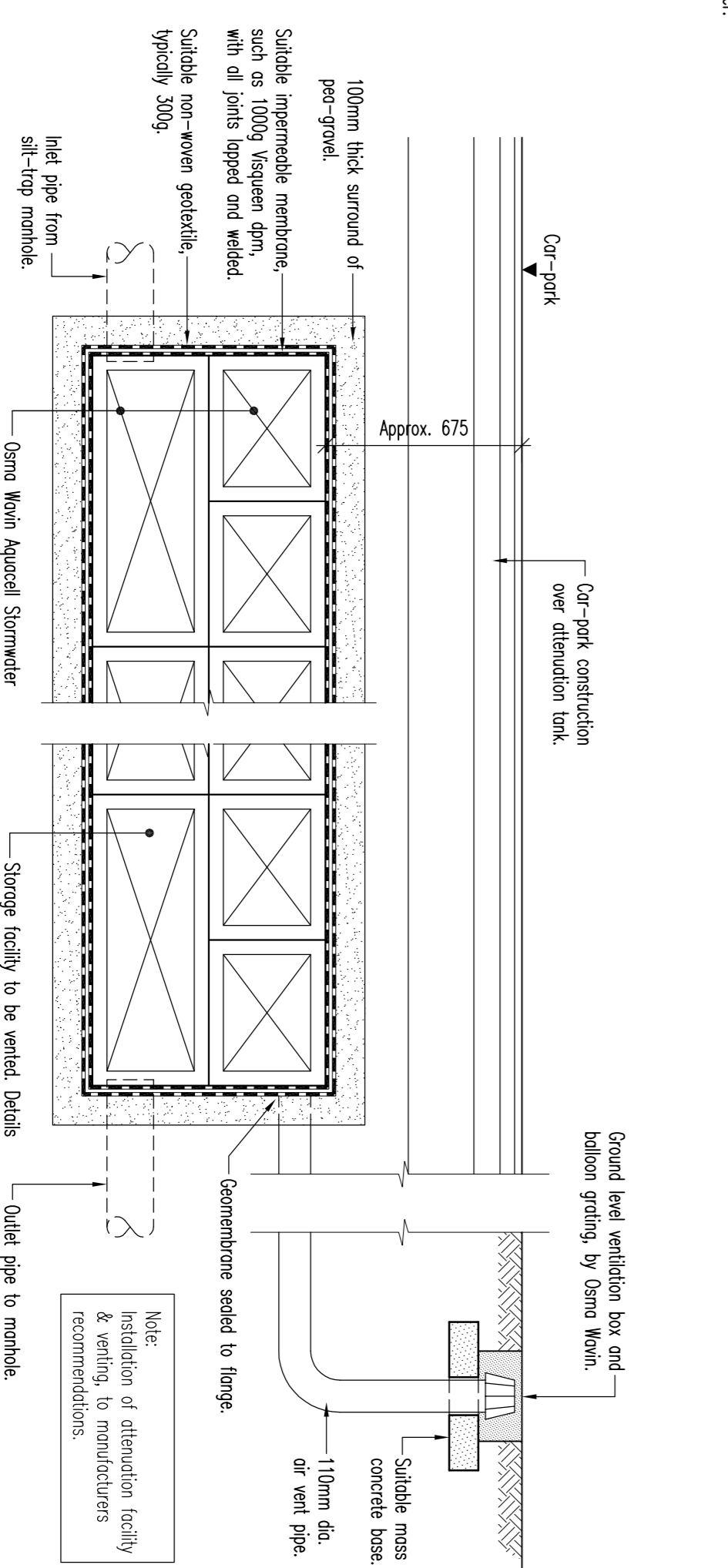
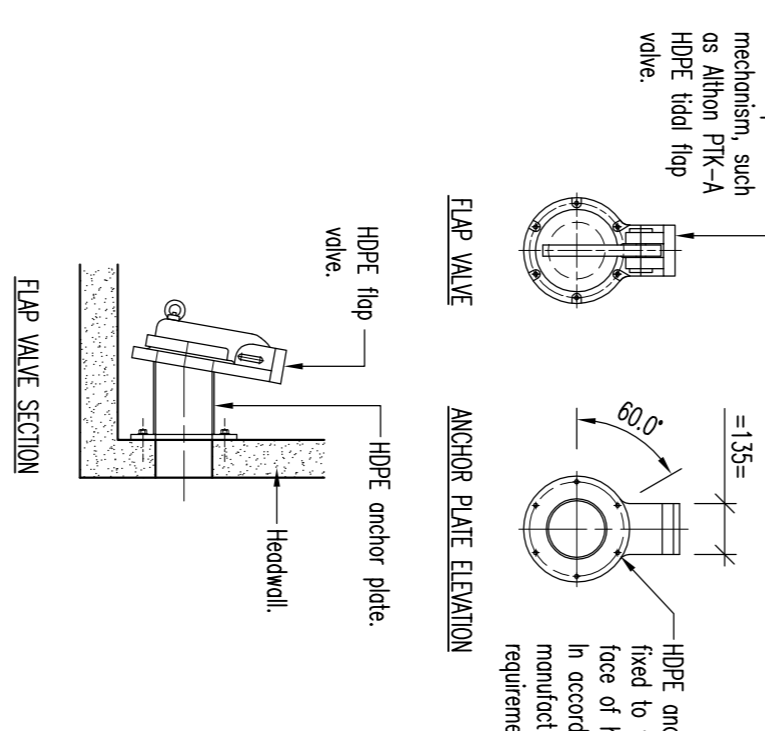
CONCRETE SURROUND JOINT DETAIL



TYPICAL HEADWALL DETAIL

Althion headwall: Two part Precast Concrete (P/C) headwall to be installed in strict accordance with manufacturers requirements and in line with all national resources files recommendations. Backwall height and toe depth dependent upon on site survey of existing near bank. For full detailed installation instructions contact: [sales@althion.co.uk](mailto:sales@althion.co.uk) www.althion.co.uk

TYPICAL FLAP VALVE DETAILS



STORMWATER ATTENUATION FACILITY (TYPICAL OSMIA WAVIN AQUACELL)

Note: The specification in all respects shall be in accordance with the current Specification and Construction publication in force in the country of the line of construction.

PROJECT:	ST. CUTHBERTS REDEVELOPMENT		
TITLE:	DRAINAGE DETAILS		
DATE:	FEB 20	DRAWN:	JD
SCALE:	1:20 (A)	CHECKED:	GF
PROJECT NO.:	19.4389	DWG NO.:	04
REV.:		REV.:	B

REV.	DATE	DRAWN	REVISION
B	25.05.21	JD	Headwall Details revised.
A	04.06.20	JD	Attenuation facility and Flap Valve details added.

DRAWING ISSUE STATUS		DESIGN DEVELOPMENT PRIOR TO TENDER	
<input type="checkbox"/> PRELIMINARY ISSUE	<input type="checkbox"/> DESIGN DEVELOPMENT PRIOR TO CONSTRUCTION	<input type="checkbox"/> AS BUILT ISSUE	
<input type="checkbox"/> TENDER ISSUE	<input type="checkbox"/> CONSTRUCTION ISSUE		

**AUSTIN PARTNERSHIP**  
CONSULTING ENGINEERS  
11 Drake Walk, Westfordon 2000, Atlantic World, Cardiff, CF10 4AN  
Tel: (029) 2045 5300 Fax: (029) 2045 5310  
email: [mail@austinpartnership.co.uk](mailto:mail@austinpartnership.co.uk)  
[www.austinpartnership.co.uk](http://www.austinpartnership.co.uk)