

# **A Report on the Modelling of the Dispersion and Deposition of Ammonia from the Proposed Broiler Chicken Rearing Houses at Lower Trederwen Farm, Arddleen, Llanymynech in Powys**

**Prepared by Steve Smith**

**AS Modelling & Data Ltd.**

Email: [stevesmith@asmodata.co.uk](mailto:stevesmith@asmodata.co.uk)

Telephone: 01952 462500

25<sup>th</sup> June 2018

## 1. Introduction

AS Modelling & Data Ltd. has been instructed by Rosina Bloor, of Roger Parry & Partners LLP, on behalf of the applicant, to use computer modelling to assess the impact of ammonia emissions from the proposed broiler chicken rearing houses at Lower Trederwen Farm, Trederwen Lane, near Arddleen in Powys. SY22 6RZ.

Ammonia emission rates from the proposed poultry houses have been assessed and quantified based upon the Environment Agency's standard ammonia emission factors. The ammonia emission rates have then been used as inputs to an atmospheric dispersion and deposition model which calculates ammonia exposure levels and nitrogen and acid deposition rates in the surrounding area.

This report is arranged in the following manner:

- Section 2 provides relevant details of the farm and potentially sensitive receptors in the area.
- Section 3 provides some general information on ammonia; details of the method used to estimate ammonia emissions; relevant guidelines and legislation on exposure limits and where relevant, details of likely background levels of ammonia.
- Section 4 provides some information about ADMS, the dispersion model used for this study and details the modelling procedure.
- Section 5 contains the results of the modelling.
- Section 6 provides a discussion of the results and conclusions.

## 2. Background Details

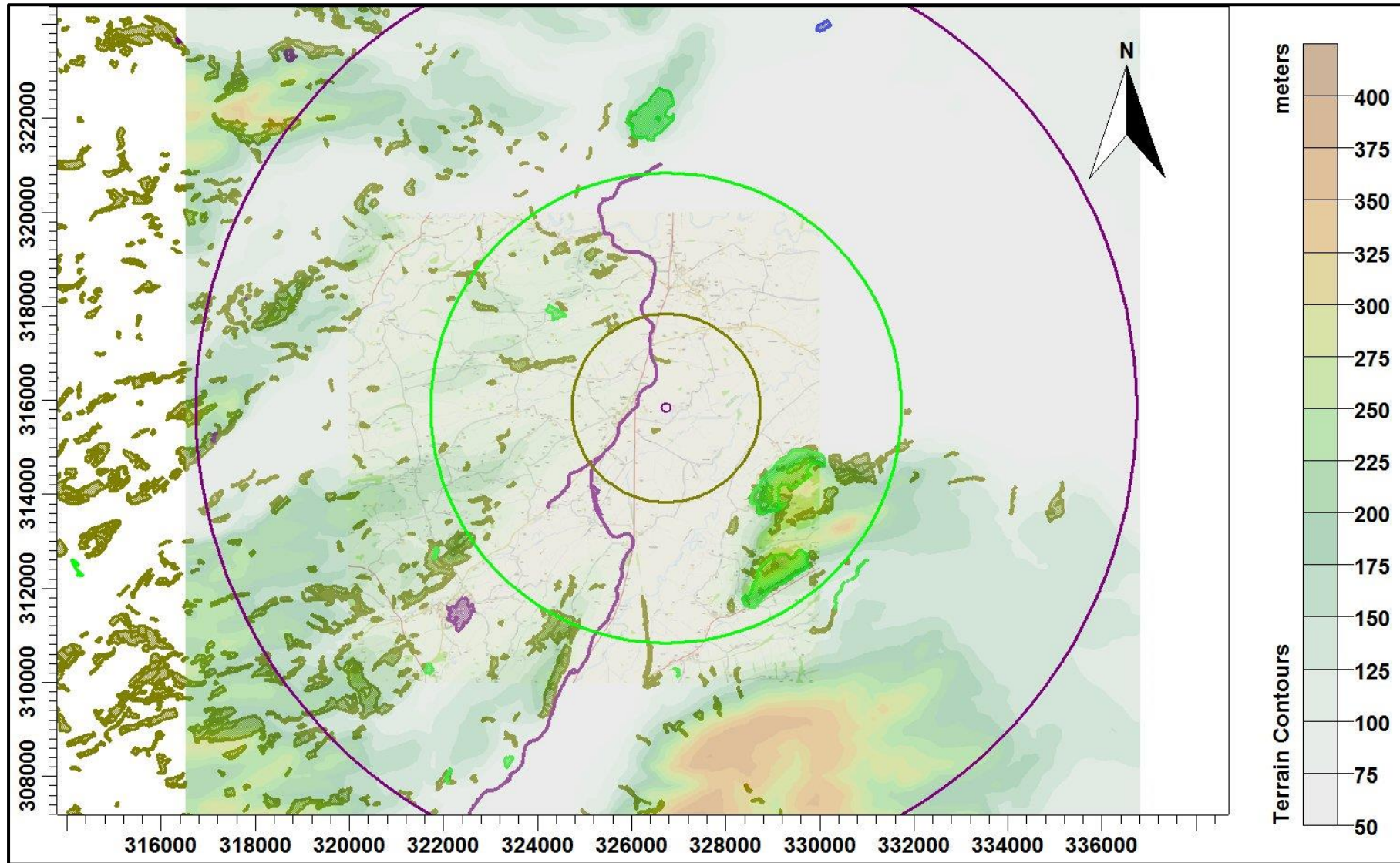
The site of the proposed poultry houses at Lower Trederwen Farm is in a rural area approximately 440 m to the east of the village of Arddleen in Powys. The site is located in a relatively flat area, at an elevation of around 75 m. The surrounding land is predominantly pasture and arable fields, although there are wooded areas nearby.

Under the proposal, two new poultry houses would be constructed at Lower Trederwen Farm. The proposed poultry houses would provide accommodation for up to 116,000 broiler chickens and would be ventilated by high speed ridge or roof fans with gable end fans for additional ventilation in hot weather.

There are four unnamed Ancient Woodlands (AWs) within 2 km of Lower Trederwen Farm and one SSSI, namely the Montgomery Canal Site of Special Scientific Interest (SSSI), which is also designated as a Special Area of Conservation (SAC). There are three other SSSIs within 5 km of the site and, there is also one other SAC and one Ramsar site within 10 km of the site.

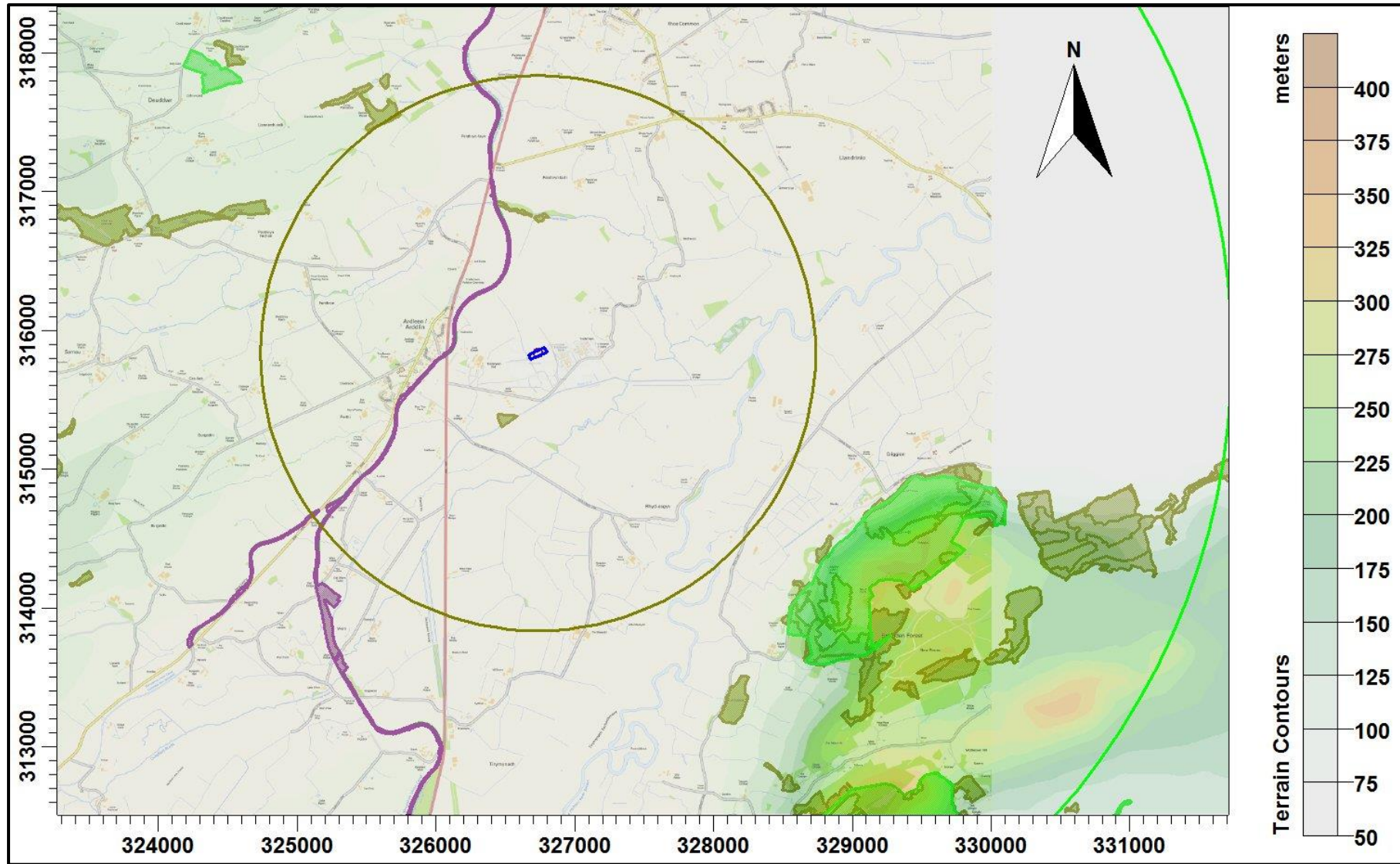
Maps of the surrounding area showing the positions of Lower Trederwen Farm, the AWs, SSSIs, SACs and the Ramsar site are provided in Figure 1a, a broad scale view and Figure 1b, a closer view. In the figures, the AWs are shaded in olive, the SSSIs are shaded in green, the SACs are shaded in purple, the Ramsar site is shaded blue and the site of the proposed poultry houses is indicated by a blue rectangle.

Figure 1a. The area surrounding Lower Trederwen Farm, a broad scale view – concentric circles radii 10 km (purple), 5 km (green) and 2 km (olive)



© Crown copyright and database rights. 2018.

Figure 1b. The area surrounding Lower Trederwen Farm, a closer view – concentric circles radii 5 km (green) and 2 km (olive)



© Crown copyright and database rights. 2018.

## 3. Ammonia, Background Levels, Critical Levels & Loads & Emission Rates

### 3.1 Ammonia concentration and nitrogen and acid deposition

When assessing potential impact on ecological receptors, ammonia concentration is usually expressed in terms of micrograms of ammonia per metre cubed of air ( $\mu\text{g-NH}_3/\text{m}^3$ ) as an annual mean. Ammonia in the air may exert direct effects on the vegetation, or indirectly affect the ecosystem through deposition which causes both hyper-eutrophication (excess nitrogen enrichment) and acidification of soils. Nitrogen deposition, specifically in this case the nitrogen load due to ammonia deposition/absorption, is usually expressed in kilograms of nitrogen per hectare per year ( $\text{kg-N/ha/y}$ ). Acid deposition is expressed in terms of kilograms equivalent (of  $\text{H}^+$  ions) per hectare per year ( $\text{keq/ha/y}$ ).

### 3.2 Background ammonia levels and nitrogen and acid deposition

The background ammonia concentration (annual mean) in the area around Lower Trederwen Farm is  $2.60 \mu\text{g-NH}_3/\text{m}^3$ . The background nitrogen deposition rate to woodland is  $36.12 \text{ kg-N/ha/y}$  and to short vegetation is  $21.56 \text{ kg-N/ha/y}$ . The background acid deposition rate to woodland is  $2.67 \text{ keq/ha/y}$  and to short vegetation is  $1.63 \text{ keq/ha/y}$ . The source of these background figures is the Air Pollution Information System (APIS).

### 3.3 Critical Levels and Critical Loads

Critical Levels and Critical Loads are a benchmark for assessing the risk of air pollution impacts to ecosystems. It is important to distinguish between a Critical Level and a Critical Load. The Critical Level is the gaseous concentration of a pollutant in the air, whereas the Critical Load relates to the quantity of pollutant deposited from air to the ground.

Critical Levels are defined as, "concentrations of pollutants in the atmosphere above which direct adverse effects on receptors, such as human beings, plants, ecosystems or materials, may occur according to present knowledge" (UNECE).

Critical Loads are defined as, "a quantitative estimate of exposure to one or more pollutants below which significant harmful effects on specified sensitive elements of the environment do not occur according to present knowledge" (UNECE).

For ammonia concentration in air, the Critical Level for higher plants is  $3.0 \mu\text{g-NH}_3/\text{m}^3$  as an annual mean. For sites where there are sensitive lichens and bryophytes present, or where lichens and bryophytes are an integral part of the ecosystem, the Critical Level is  $1.0 \mu\text{g-NH}_3/\text{m}^3$  as an annual mean.

Critical Loads for nutrient nitrogen are set under the Convention on Long-Range Transboundary Air Pollution. They are based on empirical evidence, mainly observations from experiments and gradient studies. Critical Loads are given as ranges (e.g. 10-20 kg-N/ha/y); these ranges reflect variation in ecosystem response across Europe.

The Critical Levels and Critical Loads at the wildlife sites assumed in this study are provided in Table 1. N.B. Where the Critical Level of 1.0 µg-NH<sub>3</sub>/m<sup>3</sup> is assumed, it is usually unnecessary to consider the Critical Load as the Critical Level provides the stricter test. Normally the Critical Load for nitrogen deposition provides a stricter test than the Critical Load for acid deposition.

Table 1. Critical Levels and Critical Loads at the wildlife sites

Site	Critical Level (µg-NH <sub>3</sub> /m <sup>3</sup> )	Critical Load - Nitrogen Deposition (kg-N/ha/y)	Critical Load - Acid Deposition (keq/ha/y)
AWs	1.0 <sup>1</sup>	-	-
SSSI/Ramsar	1.0 <sup>1</sup>	-	-
Montgomery Canal SAC (bankside) & Gwennydd Ty-Birth SSSI	3.0 <sup>2</sup>	10.0 <sup>2</sup>	-
Montgomery Canal SAC (aquatic)	3.0 <sup>2</sup>	3.0 <sup>3</sup>	-
Other SACs	1.0 <sup>1</sup>	10.0 <sup>2</sup>	-

1. A precautionary figure used where details of the site are unavailable, or citations indicate that sensitive lichens and bryophytes may be present.
2. Based upon the citation for the site and information from APIS (May, 2018).
3. The Critical Load for the SAC is for Floating water-plantain, *Luronium natans* (N.B. a deposition velocity of 0.005 m/s is assumed over water).

### 3.4 Guidance on the Significance of Ammonia Emissions

In March 2017, Natural Resources Wales (Regulation and Permitting Department, EPP) published Operational Guidance Note 41 (OGN 41), "Assessment of ammonia and nitrogen impacts from livestock units when applying for an Environmental Permit or Planning Permission". This guidance was intended to update the way Natural Resources Wales (NRW) assessed emissions, in particular by changing the thresholds of insignificance and the upper threshold process contributions for designated sites. These designated sites include European sites, such as Special Areas of Conservation (SACs), Special Protection Areas (SPAs) and Ramsar sites as well as Sites of Special Scientific Interest (SSSIs).

Table 1 in OGN 41 describes the revised screening distance and thresholds for livestock developments; the threshold of insignificant percentage of the designated site Critical Level or Load is given as 1%; the upper threshold percentage of the designated site Critical Level or Load is given as 8%.

Table 2 in OGN 41 describes the possible outcomes of assessment and for detailed modelling of the application alone, where process contributions, considered in isolation, are up to 1% of the designated site Critical Level or Load, then it should be determined that there is no significant environmental effect/no likely significant effect/damage to scientific interest.

Where process contributions, considered in isolation, are between 1% and 8% of the designated site Critical Level or Load, an in-combination assessment is required. Should the in-combination process contributions be between 1% and 8% of the designated site Critical Level or Load then it should be determined that the application would cause no significant environmental effect/likely significant effect/damage to scientific interest.

When considering process contributions in isolation or in-combination, if they exceed 8% of the designated site Critical Level or Load it is necessary to consider background concentrations and whether the designated site Critical Level or Load is breached and whether additional controls may be necessary. The application will then be determined based on whether there will be significant environmental effect/adverse effect/damage to scientific interest.

For Local Nature Reserves (LNRs), Local Wildlife Sites (LWSs) and Ancient Woodlands (AWs), the current assessment procedure still applies, namely the Environment Agency's horizontal guidance, H1 Environmental Risks Assessment, H1 Annex B - Intensive Farming. The following are taken from this document.

"An emission is insignificant where Process Contribution (PC) is <50% for local and national nature reserves (LNRs & NNRs), ancient woodland and local wildlife sites." And "Where modelling predicts a process contribution >100% at a NNR, LNR, ancient woodland or local wildlife site, your proposal may not be considered acceptable. In such cases, your assessment should include proposals to reduce ammonia emissions."

This document was withdrawn February 1<sup>st</sup> 2016 and replaced with a web-page titled "Intensive farming risk assessment for your environmental permit", which contains essentially the same criteria. It is assumed that the upper threshold and lower threshold on the web-page refers to the levels that were previously referred to as levels of insignificance and acceptability in Annex B- Intensive Farming.

Within the range between the lower and upper thresholds, whether or not the impact is deemed acceptable is at the discretion of the Environment Agency. N.B. In the case of LWSs and AWs, the Environment Agency do not usually consider other farms that may act in combination and therefore a PC of up to 100% of Critical Level or Critical Load is usually deemed acceptable for permitting purposes and therefore the upper and lower thresholds are the same (100%).

### **3.5 IAQM Position Statement on the use of the 1% criterion**

A Position Statement issued by the Institute of Air Quality Management (IAQM) in January 2016 further clarifies the use of the 1% criterion for the determination of an 'insignificant' effect of air quality impacts on sensitive habitats. The Position Statement states: "*the use of a criterion of 1% of an environmental standard or assessment level in the context of habitats should be used only to screen out impacts that will have an insignificant effect. It should not be used as a threshold above which damage is implied*". Furthermore, if the impacts are plainly above 1% then this should be regarded as potentially significant; where impacts are just slightly greater than 1% then a degree of professional judgement should be applied with regards to the theoretical risk.

### 3.6 Quantification of Ammonia Emissions

Ammonia emission rates from poultry houses depend on many factors and are likely to be highly variable. However, the benchmarks for assessing impacts of ammonia and nitrogen deposition are framed in terms of an annual mean ammonia concentration and annual nitrogen deposition rates. To obtain relatively robust figures for these statistics it is not necessary to model short term temporal variations and a steady continuous emission rate can be assumed. In fact, modelling short term temporal variations might introduce rather more uncertainty than modelling continuous emissions.

The Environment Agency provided an Intensive farming guidance note which lists standard ammonia emission factors for a variety of livestock, including broiler chickens. The emission factor for broiler chickens is 0.034 kg-NH<sub>3</sub>/bird place/y; this figure is used to calculate the emissions from the proposed poultry houses.

Details of the poultry numbers and types and emission factors used and calculated ammonia emission rates are provided in Table 2.

*Table 2. Details of poultry numbers and ammonia emission rates*

Source	Animal numbers	Type or weight	Emission factor (kg-NH <sub>3</sub> /place/y)	Emission rate (g-NH <sub>3</sub> /s)
Proposed Housing	116,000	Broiler Chickens	0.034	0.124978

## 4. The Atmospheric Dispersion Modelling System (ADMS) and model parameters

The Atmospheric Dispersion Modelling System (ADMS) ADMS 5 is a new generation Gaussian plume air dispersion model, which means that the atmospheric boundary layer properties are characterised by two parameters; the boundary layer depth, and the Monin-Obukhov length rather than in terms of the single parameter Pasquill-Gifford class.

Dispersion under convective meteorological conditions uses a skewed Gaussian concentration distribution (shown by validation studies to be a better representation than a symmetrical Gaussian expression).

ADMS has a number of model options including: dry and wet deposition; NO<sub>x</sub> chemistry; impacts of hills, variable roughness, buildings and coastlines; puffs; fluctuations; odours; radioactivity decay (and  $\gamma$ -ray dose); condensed plume visibility; time varying sources and inclusion of background concentrations.

ADMS has an in-built meteorological pre-processor that allows flexible input of meteorological data both standard and more specialist. Hourly sequential and statistical data can be processed and all input and output meteorological variables are written to a file after processing.

The user defines the pollutant, the averaging time (which may be an annual average or a shorter period), which percentiles and exceedance values to calculate, whether a rolling average is required or not and the output units. The output options are designed to be flexible to cater for the variety of air quality limits, which can vary from country to country and are subject to revision.

## 4.1 Meteorological data

Computer modelling of dispersion requires hourly sequential meteorological data and to provide robust statistics the record should be of a suitable length; preferably four years or longer.

The meteorological data used in this study is obtained from assimilation and short term forecast fields of the Numerical Weather Prediction (NWP) system known as the Global Forecast System (GFS). Observational meteorological data from Lake Vyrnwy and RAF Shawbury have also been considered.

The GFS is a spectral model and data are archived at a horizontal resolution of 0.25 degrees, which is approximately 25 km over the UK (formerly 0.5 degrees, or approximately 50 km). The GFS resolution adequately captures major topographical features and the broad-scale characteristics of the weather over the UK. Smaller scale topological features may be included in the dispersion modelling by using the flow field module of ADMS (FLOWSTAR). The use of NWP data has advantages over traditional meteorological records because:

- Calm periods in traditional records may be over represented, this is because the instrumentation used may not record wind speed below approximately 0.5 m/s and start up wind speeds may be greater than 1.0 m/s. In NWP data, the wind speed is continuous down to 0.0 m/s, allowing the calms module of ADMS to function correctly.
- Traditional records may include very local deviations from the broad-scale wind flow that would not necessarily be representative of the site being modelled; these deviations are difficult to identify and remove from a meteorological record. Conversely, local effects at the site being modelled are relatively easy to impose on the broad-scale flow and provided horizontal resolution is not too great, the meteorological records from NWP data may be expected to represent well the broad-scale flow.
- Information on the state of the atmosphere above ground level which would otherwise be estimated by the meteorological pre-processor may be included explicitly.

A wind rose showing the distribution of wind speeds and directions in the GFS derived data is shown in Figure 2a.

Wind speeds are modified by the treatment of roughness lengths (see Section 4.7) and where terrain data is included in the modelling, wind speeds and directions will be modified. The terrain and roughness length modified wind rose for Lower Trederwen Farm is shown in Figure 2b. Note that elsewhere in the modelling domain the modified wind roses may differ more markedly and that the resolution of the wind field in terrain runs is approximately 340 m in the preliminary modelling and is 150 m in the detailed modelling.

Data from the meteorological recording stations at Lake Vyrnwy and RAF Shawbury have also been considered. However, neither Lake nor RAF Shawbury, has an aspect that in any way could be considered similar to Lower Trederwen Farm; therefore, it should be noted that the frequency of winds from a particular direction in the Lake Vyrnwy and RAF Shawbury data may be either high or low in comparison to what might occur at Lower Trederwen Farm, which means mean concentrations downwind may be either over or under predicted. Additionally, periods of light winds and calms cannot be properly modelled. Therefore, it is the opinion of AS Modelling & Data Ltd. that the results obtained using the GFS data, particularly when modified by using FLOWSTAR, should be given more weight when interpreting the results of the modelling.

The wind roses for Lake Vyrnwy and RAF Shawbury are shown in Figures 2c and 2d.

Figure 2a. The wind rose. Raw GFS derived data, for 52.735 N, 3.085 W, 2014 – 2017

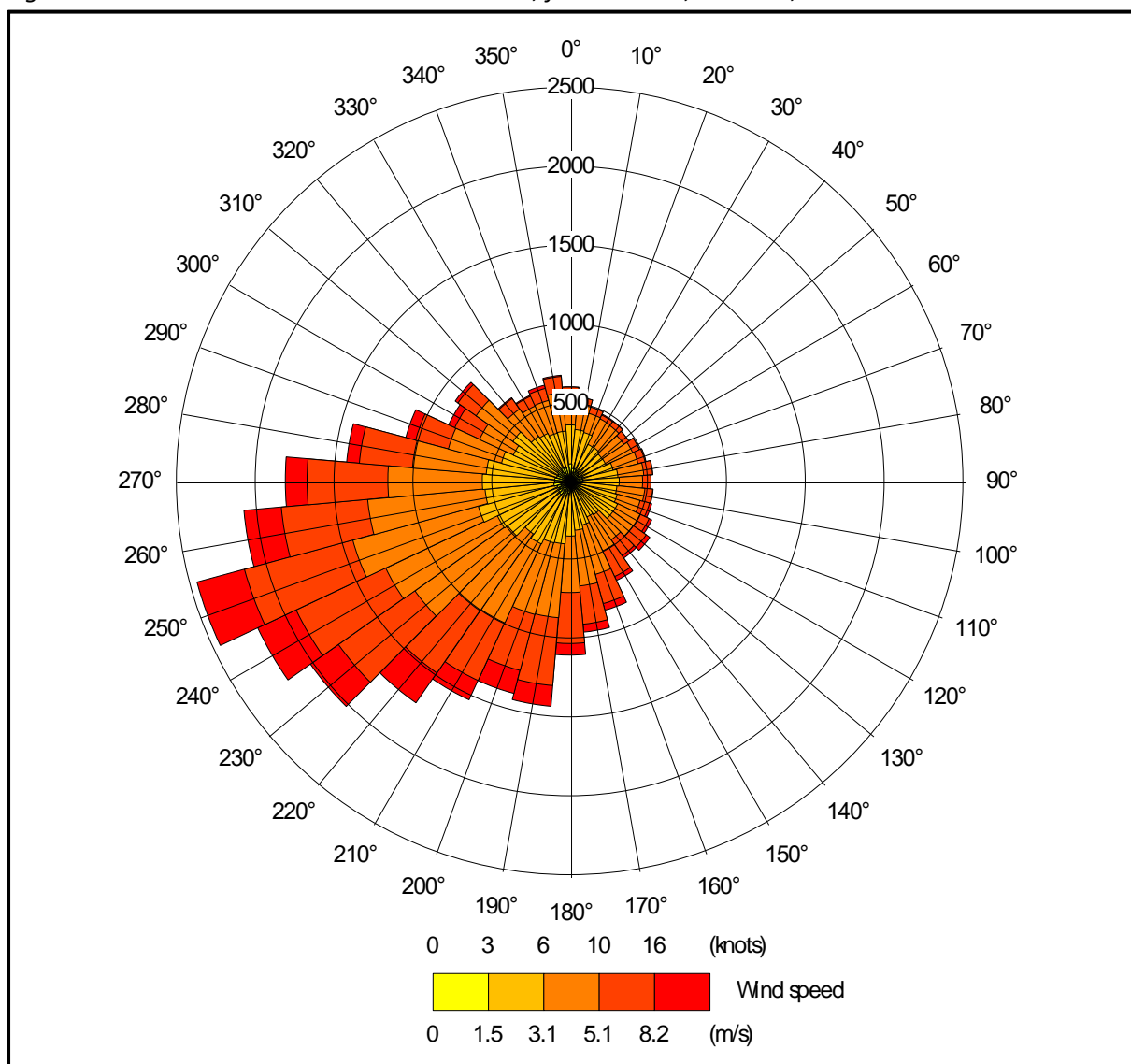


Figure 2b. The wind rose. FLOWSTAR modified GFS derived data for 52.735 N, 3.085 W, 2014 – 2017

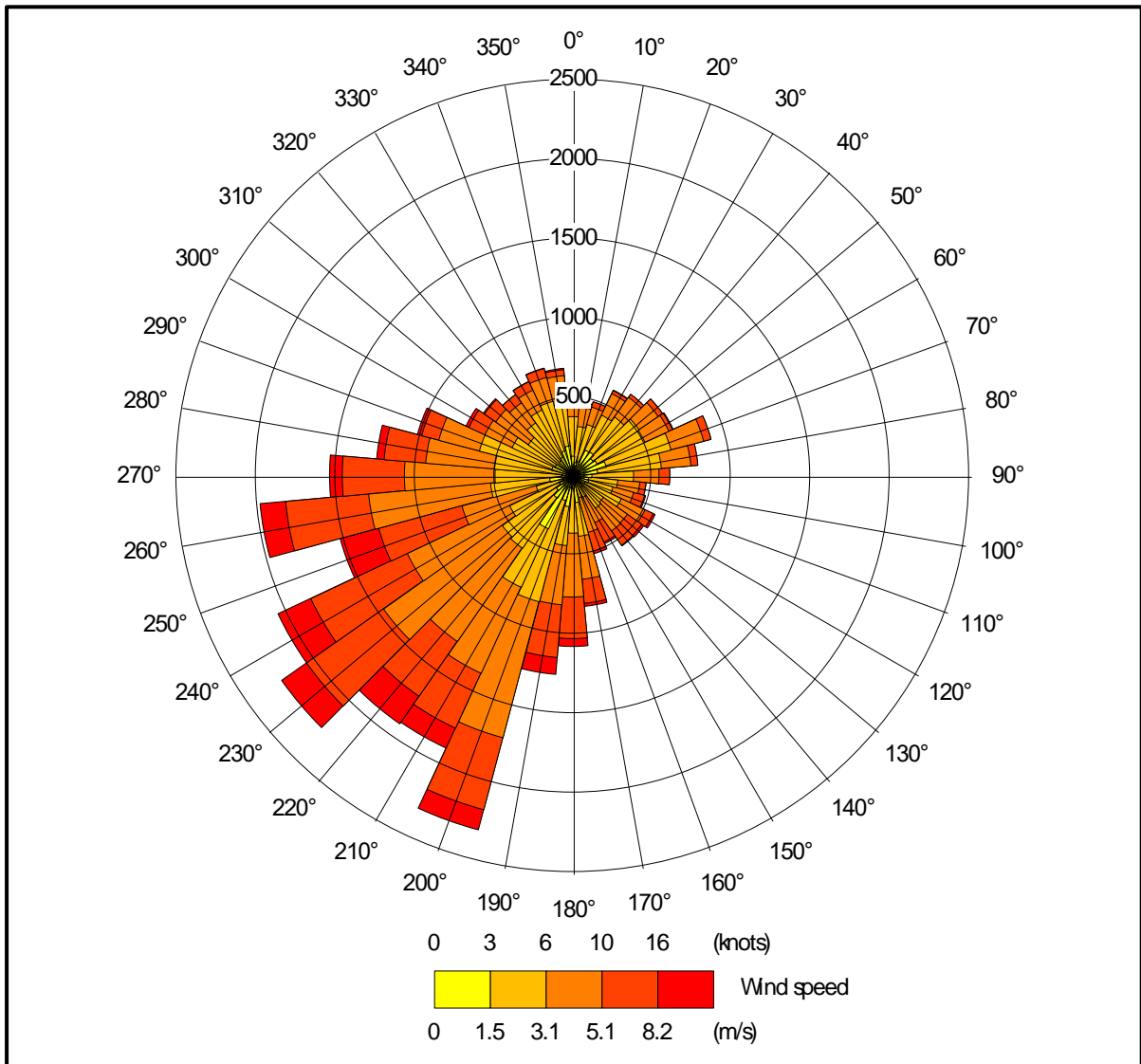


Figure 2c. The wind rose. Lake Vyrnwy, 2014 – 2017

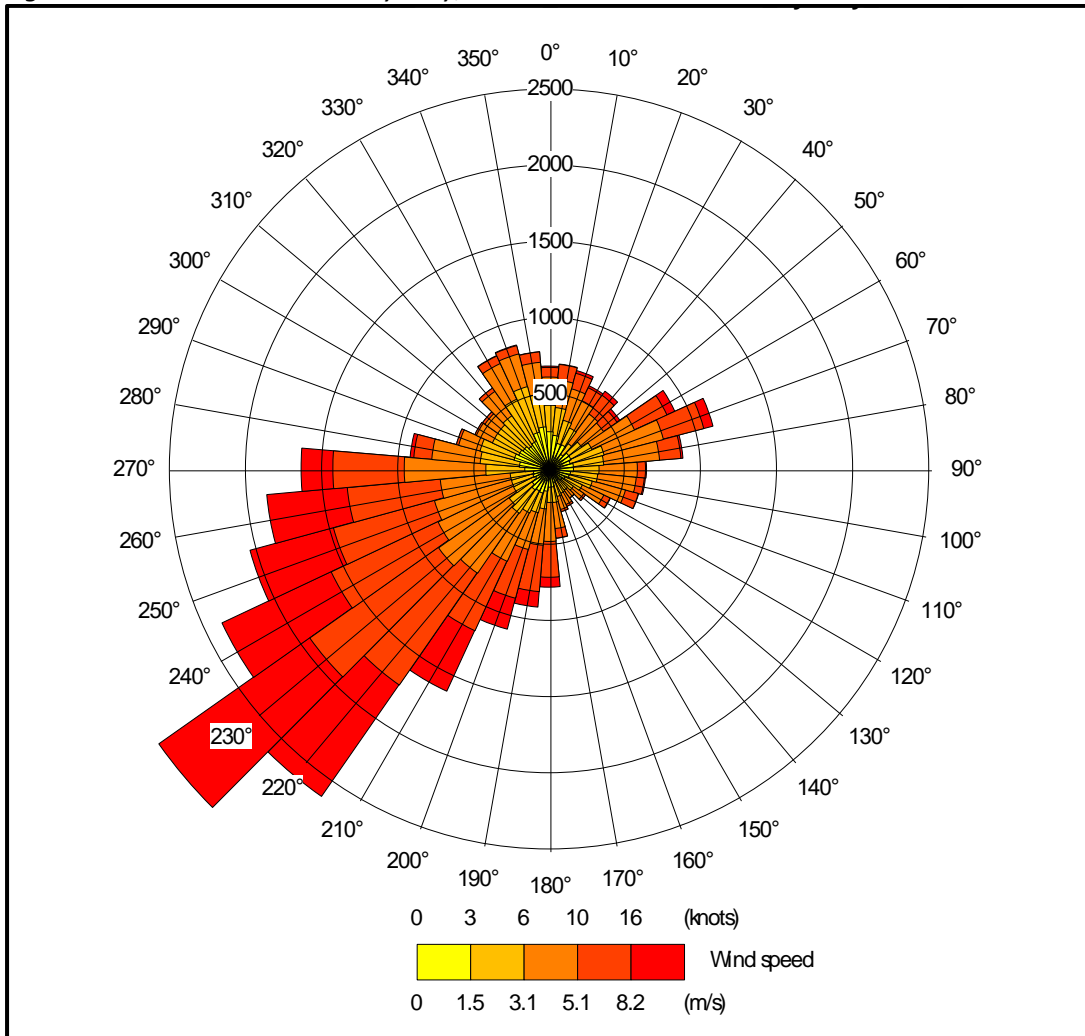
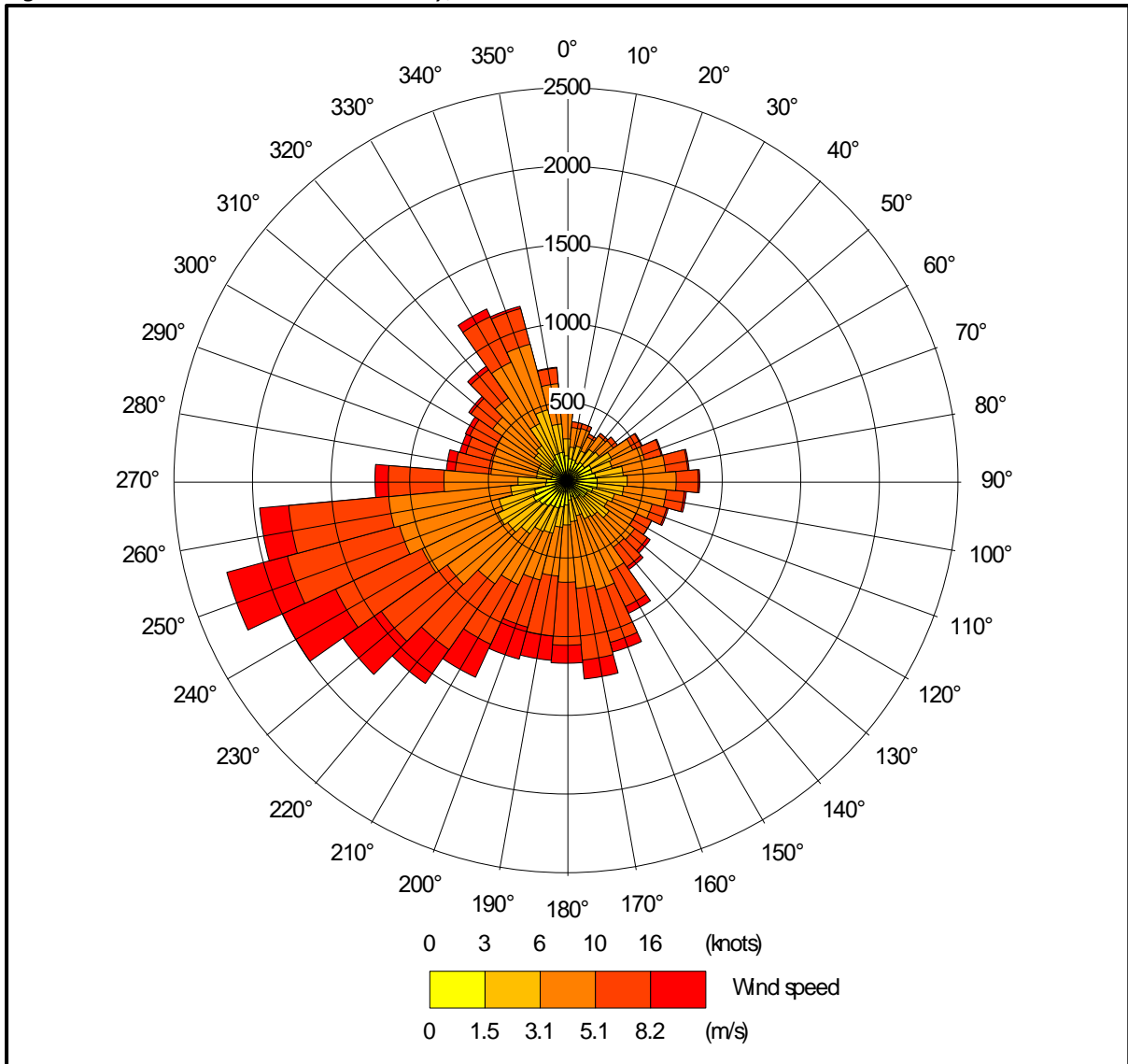


Figure 2d. The wind rose. RAF Shawbury, 2017 – 2017



## 4.2 Emission sources

Emissions from the high speed ridge/roof fans that would be used to ventilate the proposed poultry houses are represented by three point sources within ADMS (PR1 a, b and c & PR2 a, b and c). Details of the point source parameters are shown in Table 3a. The positions of the point sources may be seen in Figure 3, where they are indicated by red stars.

Table 3a. Point source parameters

Source ID	Height (m)	Diameter (m)	Efflux velocity (m/s)	Emission temperature (°C)	Emission rate per source (g-NH <sub>3</sub> /s)
PR1 a, b & c to PR2 a, b & c	6.0	0.8	11.0	21.0	0.020830 <sup>1</sup>

1. Reduced by 50% when the ambient temperature equals or exceeds 21 Celsius.

The proposed houses would also be fitted with gable end fans, which would provide additional ventilation in hot weather conditions only; the emissions from the gable end fans are represented by one volume source within ADMS (PR1\_vol). Details of the volume source parameters are shown in Table 3b and the position may be seen in Figure 3, where it is marked by a red rectangle.

Table 3b. Volume source parameters

Source ID (Scenario)	Length Y (m)	Width X (m)	Depth (m)	Base height (m)	Emission temperature (°C)	Emission rate (g-NH <sub>3</sub> /s)
PR1_vol	5.0	33.6	3.0	0.0	Ambient	0.062489 <sup>2</sup>

2. 50% of the total emission only emitted when the ambient temperature equals or exceeds 21 Celsius.

## 4.3 Modelled buildings

The structure of the proposed new poultry houses may affect the odour plumes from the point sources. Therefore, these buildings are modelled within ADMS. The positions of the modelled buildings may be seen in Figure 3, where they are marked by grey rectangles.

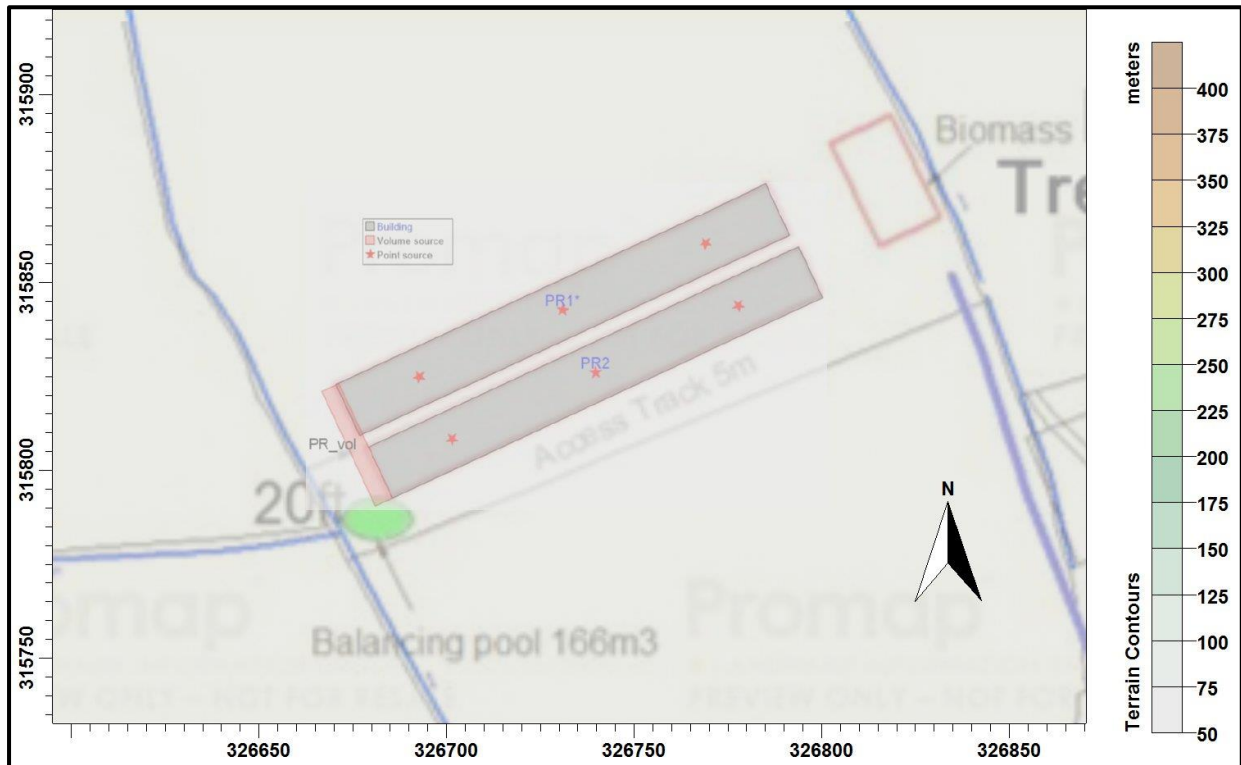
## 4.4 Discrete receptors

Thirty discrete receptors have been defined: seven at the AWs (1 to 7), seven at the SSSIs (8 to 14), fifteen at the SACs (15 to 29) and one at the Ramsar site (30). These receptors are defined at ground level within ADMS. The positions of the discrete receptors may be seen in Figure 4a, a broad scale view, and Figure 4b, a closer view, where they are marked by enumerated pink rectangles.

## 4.5 Cartesian grid

To produce the contour plots presented in Section 5 of this report and to define the spatially varying deposition field used in the detailed modelling, a regular Cartesian grid has been defined within ADMS. The individual grid receptors are defined at ground level within ADMS. The position of the Cartesian grid may be seen in Figure 4b, where it is marked by grey lines bounded by a purple rectangle.

Figure 3. The positions of modelled sources



© Crown copyright and database rights. 2018.

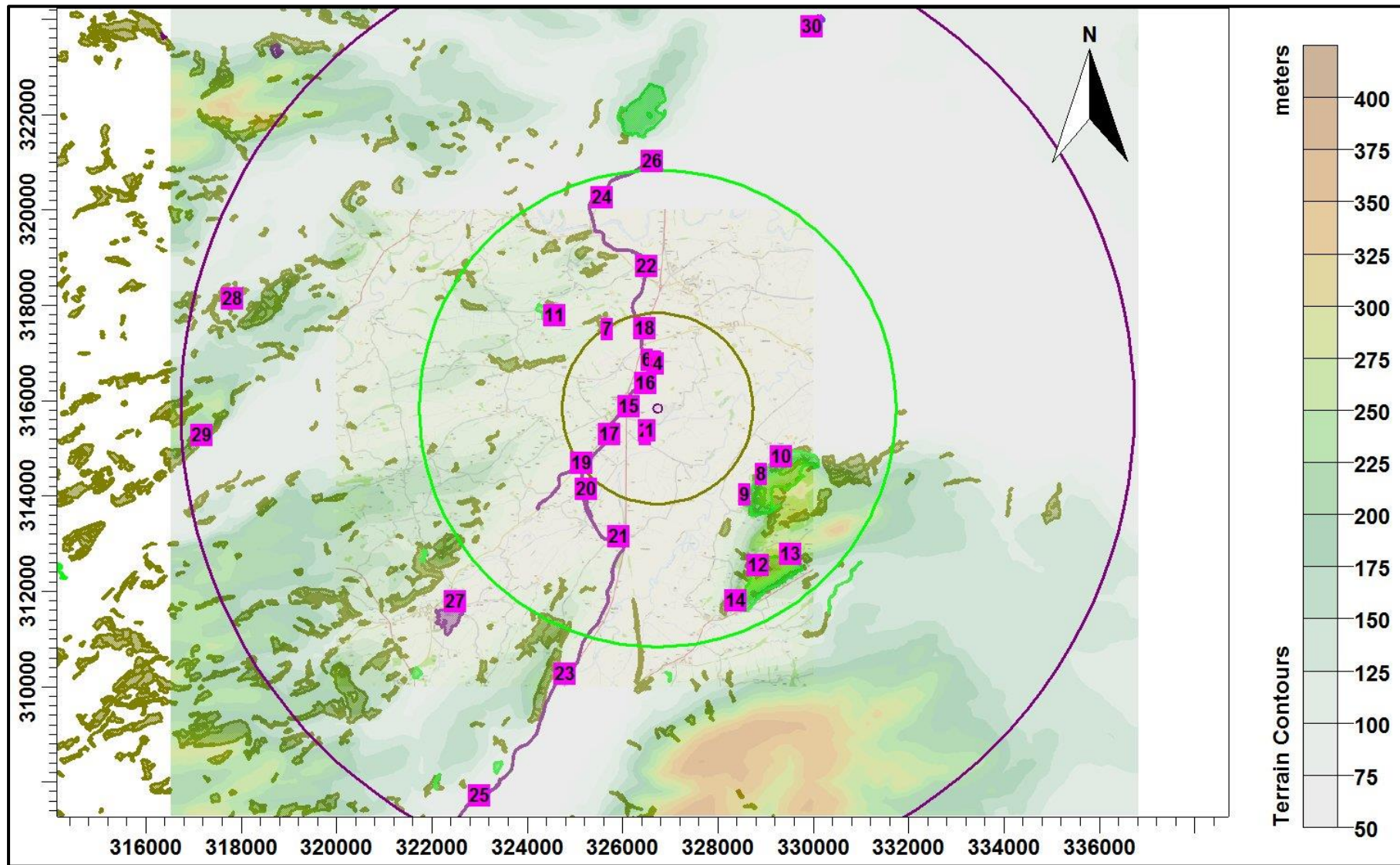
#### 4.6 Terrain data

Terrain has been considered in the modelling. The terrain data are based upon the Ordnance Survey 50 m Digital Elevation Model. A 22.0 km x 22.0 km domain has been resampled at 100 m horizontal resolution for use within ADMS for the preliminary modelling and a 10.0 km x 10.0 km domain has been resampled at 100 m horizontal resolution for use within ADMS for the detailed modelling. N.B. The resolution of FLOWSTAR is 64 x 64 grid points; therefore, the effective resolution of the wind field for the terrain runs is approximately 340 m for the preliminary modelling and is approximately 150 m for the detailed modelling.

#### 4.7 Roughness Length

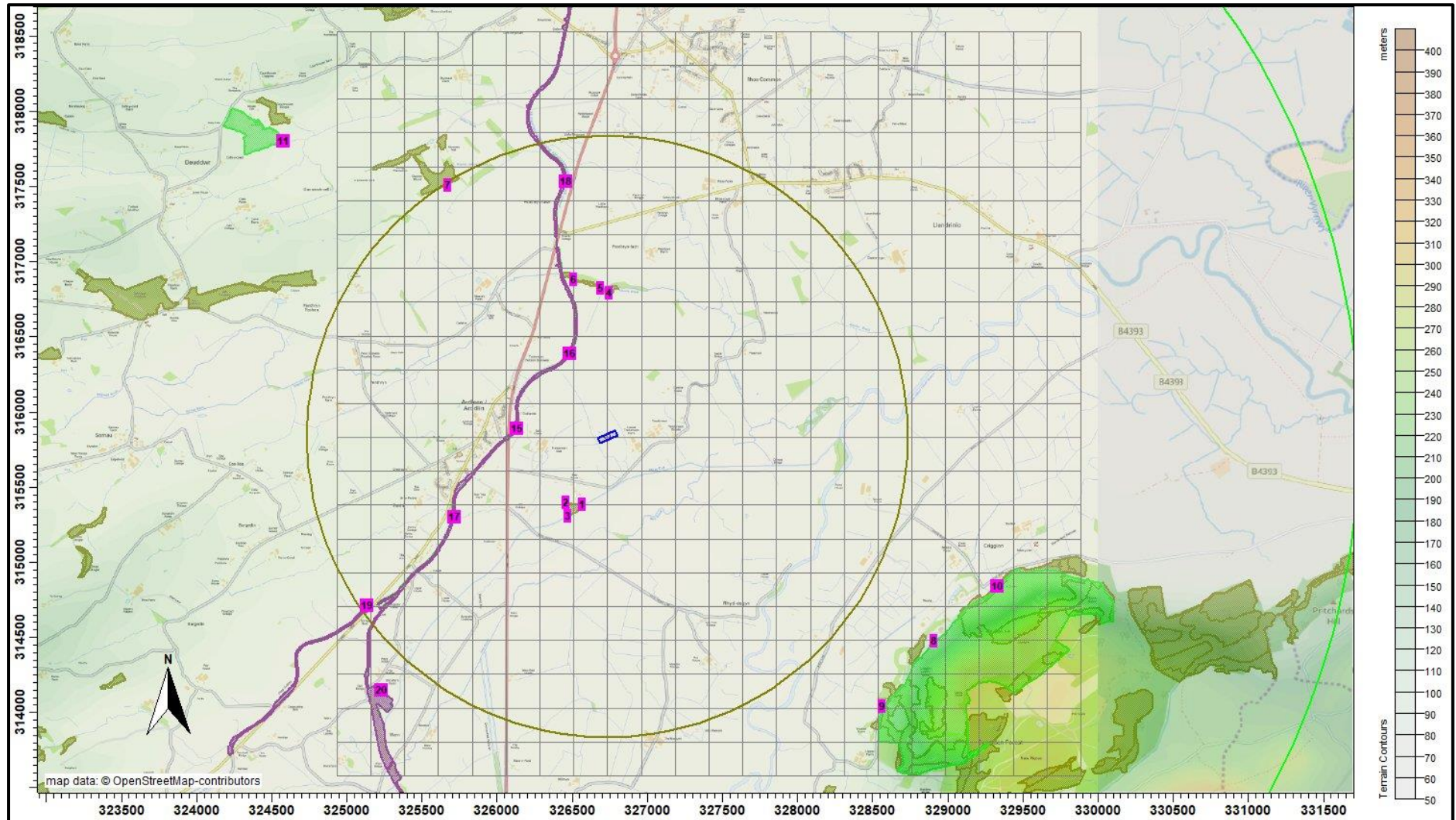
A fixed surface roughness length of 0.25 m has been applied over the entire modelling domain. As a precautionary measure, the GFS meteorological data is assumed to have a roughness length of 0.225 m. The effect of the difference in roughness length is precautionary as it increases the frequency of low wind speeds and the stability and therefore increases predicted ground level concentrations.

Figure 4a. The discrete receptors, a broad scale view



© Crown copyright and database rights. 2018.

Figure 4b. The discrete receptors, a closer view



© Crown copyright and database rights. 2018.

## 4.8 Deposition

The method used to model deposition of ammonia and consequent plume depletion is based on a document titled “Guidance on modelling the concentration and deposition of ammonia emitted from intensive farming” from the Environment Agency’s Air Quality Modelling and Assessment Unit, 22 November 2010. N.B. AS Modelling & Data Ltd. has restricted deposition over arable farmland and heavily grazed and fertilised pasture; this is to compensate for possible saturation effects due to fertilizer application and to allow for periods when fields are clear of crops (Sutton), the deposition is also restricted over areas with little or no vegetation and the deposition velocity is set to 0.002 m/s where grid points are over the poultry housing and 0.015 m/s over heavily grazed grassland. N.B deposition to water surfaces is calculated assuming a deposition velocity of 0.005 m/s.

In summary, the method is as follows:

- A preliminary run of the model without deposition is used to provide an ammonia concentration field.
- The preliminary ammonia concentration field, along with land usage, is used to define a deposition velocity field. The deposition velocities used are provided in Table 4.

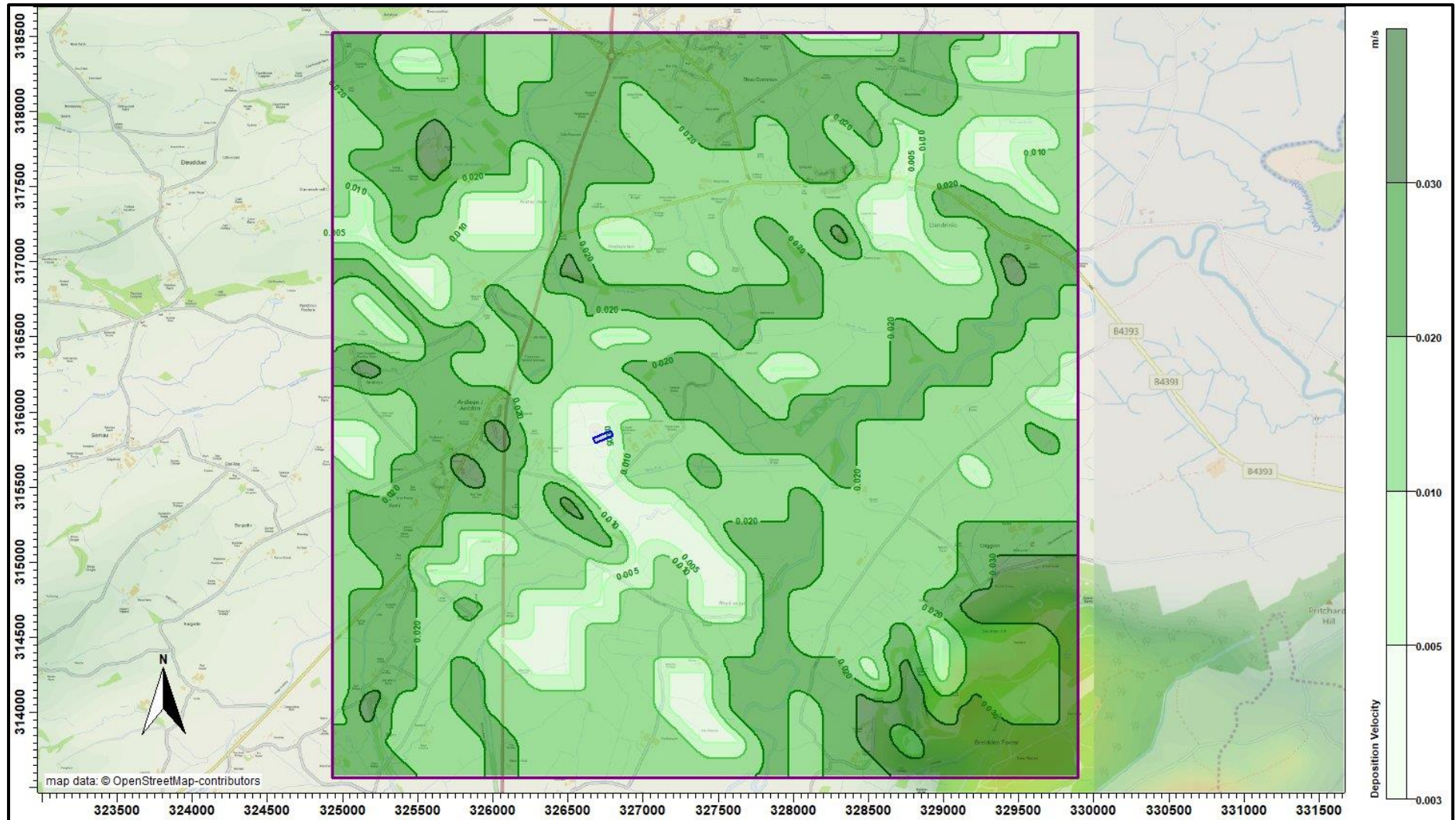
Table 4. Deposition velocities

NH3 concentration (PC + background) ( $\mu\text{g}/\text{m}^3$ )	< 10	10 - 20	20 - 30	30 – 80	> 80
Deposition velocity – woodland (m/s)	0.03	0.015	0.01	0.005	0.003
Deposition velocity – short vegetation (m/s)	0.02 (0.015 over heavily grazed grassland)	0.015	0.01	0.005	0.003
Deposition velocity – arable farmland/rye grass (m/s)	0.005	0.005	0.005	0.005	0.003

- The model is then rerun with the spatially varying deposition module.

A contour plot of the spatially varying deposition field is provided in Figure 5.

Figure 5. The spatially varying deposition field



© Crown copyright and database rights. 2018.

## 5. Details of the Model Runs and Results

### 5.1 Preliminary modelling and model sensitivity tests

ADMS was run a total of twenty-four times, once for each year in the meteorological record and in the following six modes:

- In basic mode without calms, or terrain – GFS data.
- With calms and without terrain – GFS data.
- Without calms and with terrain – GFS data.
- Without calms, with terrain and a fixed deposition velocity of 0.003 m/s – GFS data.
- In basic mode without calms, or terrain – Lake Vyrnwy data.
- In basic mode without calms, or terrain – Shawbury data.

For each mode, statistics for the maximum annual mean ammonia concentration at each receptor were compiled.

Details of the predicted annual mean ammonia concentrations at each receptor are provided in Table 5. In the Table, predicted ammonia concentrations, including those that would lead to a nitrogen deposition rate, that are in excess of the Natural Resources Wales upper threshold (8% of Critical Level or Load for a Ramsar/SAC/SSSI and 100% of a Critical Level or Load for an AW) are coloured red. Concentrations in the range between the Natural Resources Wales upper threshold and lower threshold (1% to 8% for a Ramsar/SAC/SSSI and 50% to 100% for an AW) are coloured blue. For convenience, cells referring to the AWs are shaded olive, cells referring to the SSSIs are shaded green, cells referring to the SACs are shaded purple and cells referring to the Ramsar are shaded in blue.

Table 5. Predicted maximum annual mean ammonia concentration at the discrete receptors - preliminary modelling

Receptor number	X(m)	Y(m)	Designation	Maximum annual mean ammonia concentration - ( $\mu\text{g}/\text{m}^3$ )					
				GFS No Calms No Terrain	GFS Calms No Terrain	GFS No Calms Terrain	GFS No Calms Terrain Fixed depo 0.003 m/s	Lake Vyrnwy No Calms No Terrain	Shawbury Calms No Terrain
1	326567	315386	Unnamed AW	0.109	0.109	0.114	0.103	0.177	0.084
2	326458	315395	Unnamed AW	0.100	0.100	0.111	0.101	0.152	0.077
3	326469	315305	Unnamed AW	0.079	0.079	0.084	0.075	0.134	0.063
4	326748	316787	Unnamed AW	0.094	0.093	0.091	0.080	0.044	0.068
5	326685	316820	Unnamed AW	0.085	0.085	0.082	0.071	0.038	0.065
6	326508	316877	Unnamed AW	0.066	0.065	0.062	0.051	0.027	0.059
7	325669	317508	Unnamed AW	0.021	0.021	0.035	0.021	0.008	0.022
8	328907	314477	Breidden Hill SSSI	0.020	0.020	0.078	0.037	0.027	0.014
9	328560	314039	Breidden Hill SSSI	0.019	0.019	0.050	0.026	0.025	0.014
10	329329	314839	Breidden Hill SSSI	0.025	0.025	0.072	0.032	0.029	0.012
11	324577	317798	Gwenydd Ty-Brith SSSI	0.016	0.016	0.024	0.013	0.007	0.013
12	328837	312563	Moel-y Golfa SSSI	0.010	0.010	0.021	0.009	0.021	0.013
13	329519	312801	Moel-y Golfa SSSI	0.012	0.012	0.011	0.005	0.017	0.009
14	328371	311829	Moel-y Golfa SSSI	0.008	0.008	0.014	0.007	0.019	0.015
15	326129	315886	Montgomery Canal SAC	0.105	0.105	0.147	0.106	0.099	0.124
16	326485	316388	Montgomery Canal SAC	0.123	0.122	0.111	0.096	0.047	0.138
17	325718	315302	Montgomery Canal SAC	0.038	0.037	0.070	0.048	0.065	0.043
18	326458	317529	Montgomery Canal SAC	0.035	0.034	0.039	0.027	0.016	0.030
19	325135	314711	Montgomery Canal SAC	0.021	0.020	0.047	0.029	0.030	0.021
20	325233	314151	Montgomery Canal SAC	0.017	0.017	0.027	0.018	0.022	0.015
21	325912	313171	Montgomery Canal SAC	0.016	0.016	0.020	0.012	0.027	0.010
22	326499	318840	Montgomery Canal SAC	0.017	0.017	0.022	0.013	0.010	0.015
23	324791	310287	Montgomery Canal SAC	0.007	0.007	0.008	0.004	0.013	0.005
24	325568	320286	Montgomery Canal SAC	0.009	0.009	0.012	0.006	0.005	0.008
25	322989	307740	Montgomery Canal SAC	0.005	0.005	0.004	0.002	0.008	0.003
26	326619	321036	Montgomery Canal SAC	0.008	0.008	0.010	0.005	0.006	0.008
27	322493	311799	Granllyn SAC	0.006	0.006	0.018	0.009	0.008	0.006
28	317810	318161	Tanat and Vyrnwy SAC	0.005	0.005	0.006	0.002	0.004	0.004
29	317164	315291	Tanat and Vyrnwy SAC	0.005	0.005	0.008	0.003	0.004	0.005
30	329979	323863	Midlands Meres and Mosses Ramsar	0.005	0.005	0.009	0.005	0.004	0.005

## 5.2 Detailed modelling

The detailed modelling, which includes ammonia deposition and the consequent plume depletion, was carried out over a restricted domain covering the proposed poultry unit at Lower Trederwen Farm, closer parts of the Montgomery Canal SAC and Breidden Hill SSSI, the area where the preliminary modelling (GFS terrain run and fixed deposition run) indicated that annual mean ammonia concentrations or nitrogen deposition rates would potentially exceed 1% of the Critical Level or Critical Load, which is the Natural Resources Wales lower threshold percentage for a SAC/SSSI. At the other wildlife sites, the preliminary modelling indicated that ammonia levels (and nitrogen deposition rates) would be below the Natural Resources Wales lower threshold percentage of Critical Level/Load for the designation of the site.

Terrain effects may be significant at some receptors; therefore, the detailed deposition run was made with terrain. Calms cannot be used with terrain or spatially varying deposition; therefore, calms have not been included in the detailed modelling; however, the results of the preliminary modelling indicate that the effects of calms are insignificant in this case.

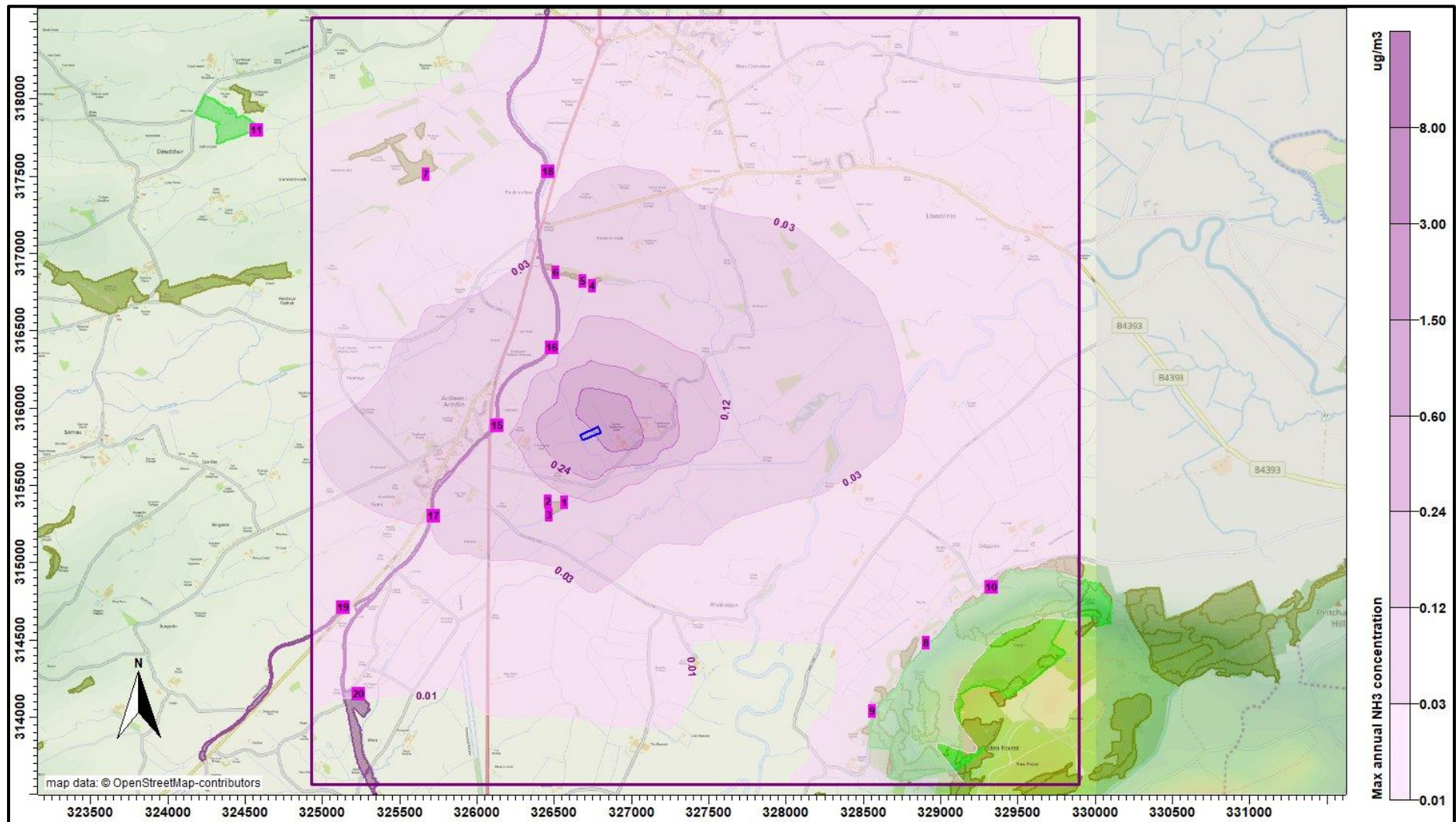
The predicted maximum annual mean ground level ammonia concentrations and nitrogen deposition rates at the discrete receptors within the detailed modelling domain are shown in Table 6. In the Table, predicted ammonia concentrations or nitrogen deposition rates that are in excess of the Natural Resources Wales upper threshold (8% of Critical Level or Load for a SAC/SSSI) are coloured red. Concentrations that are in the range between the Natural Resources Wales lower and upper threshold (1% to 8% for a SAC/SSSI) are coloured blue.

A contour plot of the predicted ground level maximum annual mean ammonia concentration is shown in Figure 6 and a contour plot of the maximum nitrogen deposition rate is shown in Figure 7.

Table 6. Predicted maximum annual mean ammonia concentrations and nitrogen deposition rates at the discrete receptors - detailed modelling

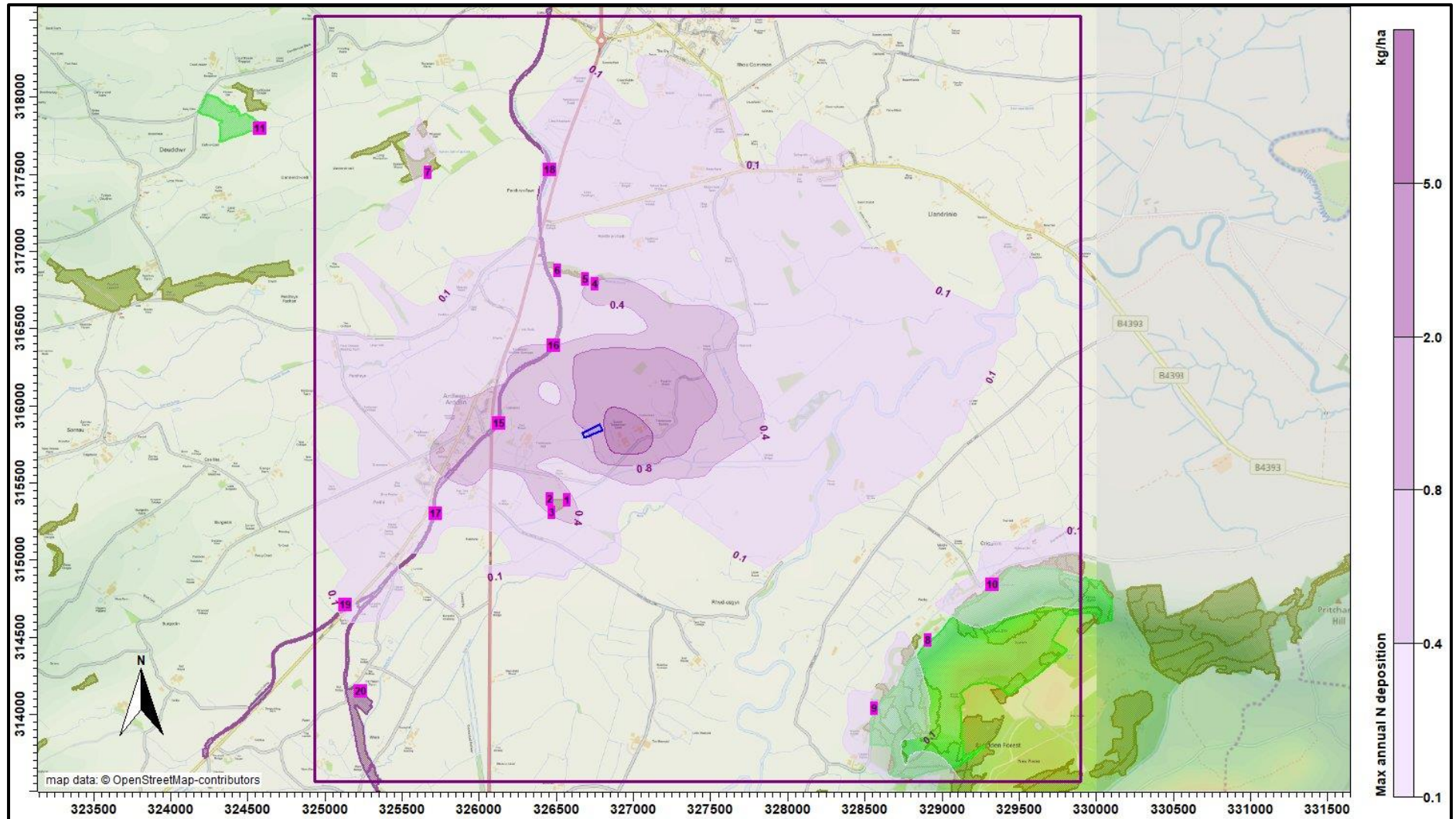
Receptor number	X(m)	Y(m)	Name	Site Parameters			Maximum annual ammonia concentration		Maximum annual nitrogen deposition rate	
				Deposition Velocity	Critical Level ( $\mu\text{g}/\text{m}^3$ )	Critical Load (kg/ha)	Process Contribution ( $\mu\text{g}/\text{m}^3$ )	%age of Critical Level	Process Contribution (kg/ha)	%age of Critical Load
8	328907	314477	Breidden Hill SSSI	0.030	1.0	10.0	0.020	<b>2.0</b>	0.16	<b>1.6</b>
9	328560	314039	Breidden Hill SSSI	0.030	1.0	10.0	0.020	<b>2.0</b>	0.16	<b>1.6</b>
10	329329	314839	Breidden Hill SSSI	0.030	1.0	10.0	0.018	<b>1.8</b>	0.14	<b>1.4</b>
15	326129	315886	Montgomery Canal SAC	0.020	3.0	10.0	0.084	<b>2.8</b>	0.44	<b>4.4</b>
16	326485	316388	Montgomery Canal SAC	0.020	3.0	10.0	0.089	<b>3.0</b>	0.46	<b>4.6</b>
17	325718	315302	Montgomery Canal SAC	0.020	3.0	10.0	0.031	<b>1.0</b>	0.16	<b>1.6</b>
18	326458	317529	Montgomery Canal SAC	0.020	3.0	10.0	0.023	0.8	0.12	<b>1.2</b>
19	325135	314711	Montgomery Canal SAC	0.020	3.0	10.0	0.019	0.6	0.10	1.0
20	325233	314151	Montgomery Canal SAC	0.020	3.0	10.0	0.010	0.3	0.05	0.5

Figure 6. Maximum annual ammonia concentration



© Crown copyright and database rights. 2018.

Figure 7. Maximum annual nitrogen deposition rates



© Crown copyright and database rights. 2018.

## 6. Summary and Conclusions

AS Modelling & Data Ltd. has been instructed by Rosina Bloor, of Roger Parry & Partners LLP, on behalf of the applicant, to use computer modelling to assess the impact of ammonia emissions from the proposed broiler chicken rearing houses at Lower Trederwen Farm, Trederwen Lane, near Arddleen in Powys. SY22 6RZ.

Ammonia emission rates from the proposed poultry houses have been assessed and quantified based upon the Environment Agency's standard ammonia emission factors. The ammonia emission rates have then been used as inputs to an atmospheric dispersion and deposition model which calculates ammonia exposure levels and nitrogen and acid deposition rates in the surrounding area.

The preliminary modelling predicts that the process contribution of the proposed poultry unit to the annual ammonia concentration and the nitrogen deposition rate would potentially exceed the Natural Resources Wales lower threshold percentage of the Critical Level or Load (1% for a SAC/SSSI/Ramsar site and 100% for a non-statutory site), at Breidden Hill SSSI and closer parts of the Montgomery Canal SAC. At all other sites the preliminary modelling predicts that the process contribution would be below the Natural Resources Wales lower threshold percentage of the Critical Level or Load.

The detailed modelling predicts that:

- The process contribution from the proposed poultry houses to the nitrogen deposition rate would exceed 1% of the Critical Load of 10 kg-N/ha/y along approximately 3.6 km of the Montgomery Canal SAC. (1% of the Critical Level of 3.0  $\mu\text{g-NH}_3/\text{m}^3$  is exceeded along approximately 2.2 km of the canal).
- The process contribution from the proposed poultry houses to the annual mean ammonia concentration would exceed 1% of the Critical Level of 1.0  $\mu\text{g-NH}_3/\text{m}^3$  over north-western parts of Breidden Hill SSSI (1% of the Critical Load of 10 kg-N/ha/y is exceeded over a smaller area of the SSSI).

In such cases, where the predicted process contributions to ammonia concentrations and nitrogen deposition rates are between the Natural Resources Wales lower and upper thresholds, an in-combination assessment may be necessary as part of the competent authority's appropriate assessment.

## 7. References

Cambridge Environmental Research Consultants (CERC) (website).

<http://www.cerc.co.uk/environmental-software/ADMS-model.html>

Environment Agency H1 Risk Assessment (website).

<https://www.gov.uk/government/collections/horizontal-guidance-environmental-permitting>

M. A. Sutton *et al.* Measurement and modelling of ammonia exchange over arable croplands.

<https://enviro.doe.gov.my/lib/digital/1386301476-1-s2.0-S0166111606802748-main.pdf>

Misselbrook. *et al.* Inventory of Ammonia Emissions from UK Agriculture 2011

[http://uk-air.defra.gov.uk/assets/documents/reports/cat07/1211291427\\_nh3inv2011\\_261112\\_FINAL\\_corrected.pdf](http://uk-air.defra.gov.uk/assets/documents/reports/cat07/1211291427_nh3inv2011_261112_FINAL_corrected.pdf)

United Nations Economic Commission for Europe (UNECE) (website).

<http://www.unece.org/env/lrtap/WorkingGroups/wge/definitions.htm>

UK Air Pollution Information System (APIS) (website).

<http://www.apis.ac.uk/>