



Pozidrain G

A guide to the
selection and
specification of
Truckcell™ high load
paving system

abg | creative
geosynthetic
engineering

Pozidrain G

Pozidrain G is designed as a cost effective geocomposite for landfill cap drainage, gas-venting, membrane protection, ground water drainage and leachate management. It is particularly useful on steep slopes where its patented core structure offers enhanced frictional performance.

Pozidrain G shear interface on steep slopes

The structure of Pozidrain G offers superior interface friction performance on steep slopes. This is confirmed in a series of direct shear tests comparing the performance of Pozidrain G4SD against other conventional geocomposites.

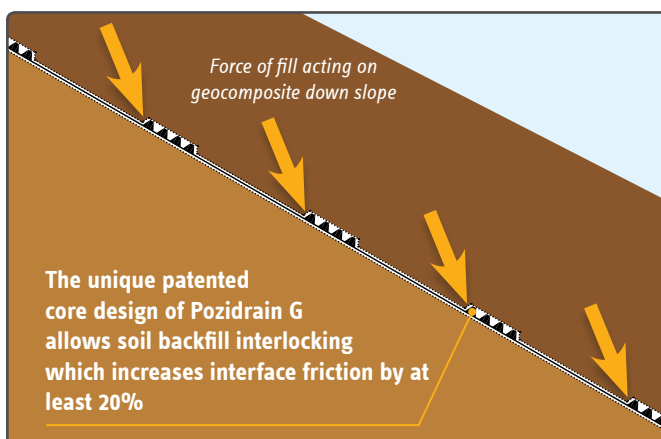
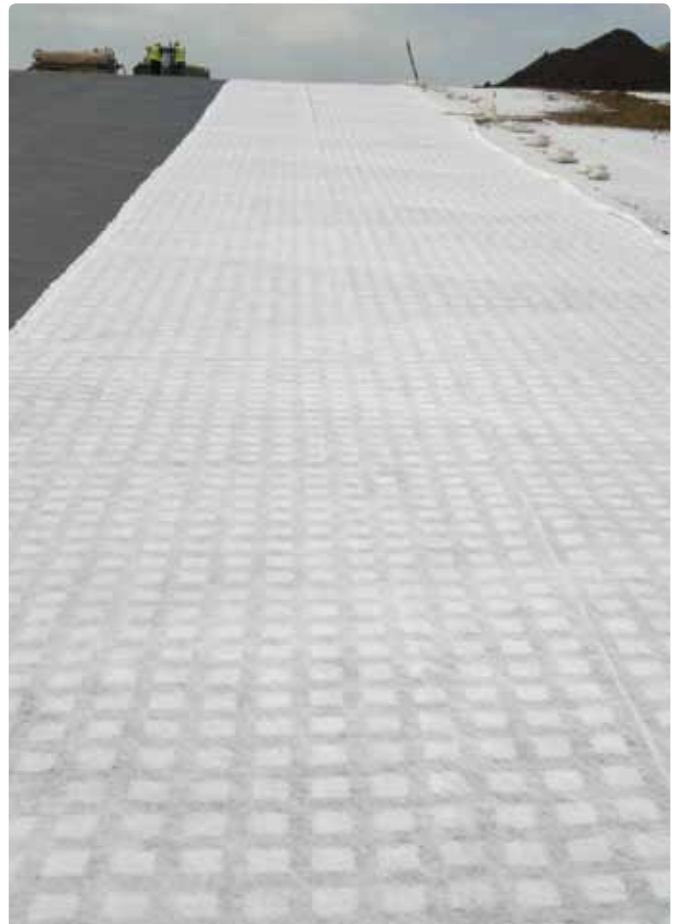
The measured interface shear strength for the Pozidrain G4SD is shown to be 20% stronger than the interface with other geocomposites. For the 6mm and 7mm Pozidrain G interfaces the increase in shear strength is as much as 30%.

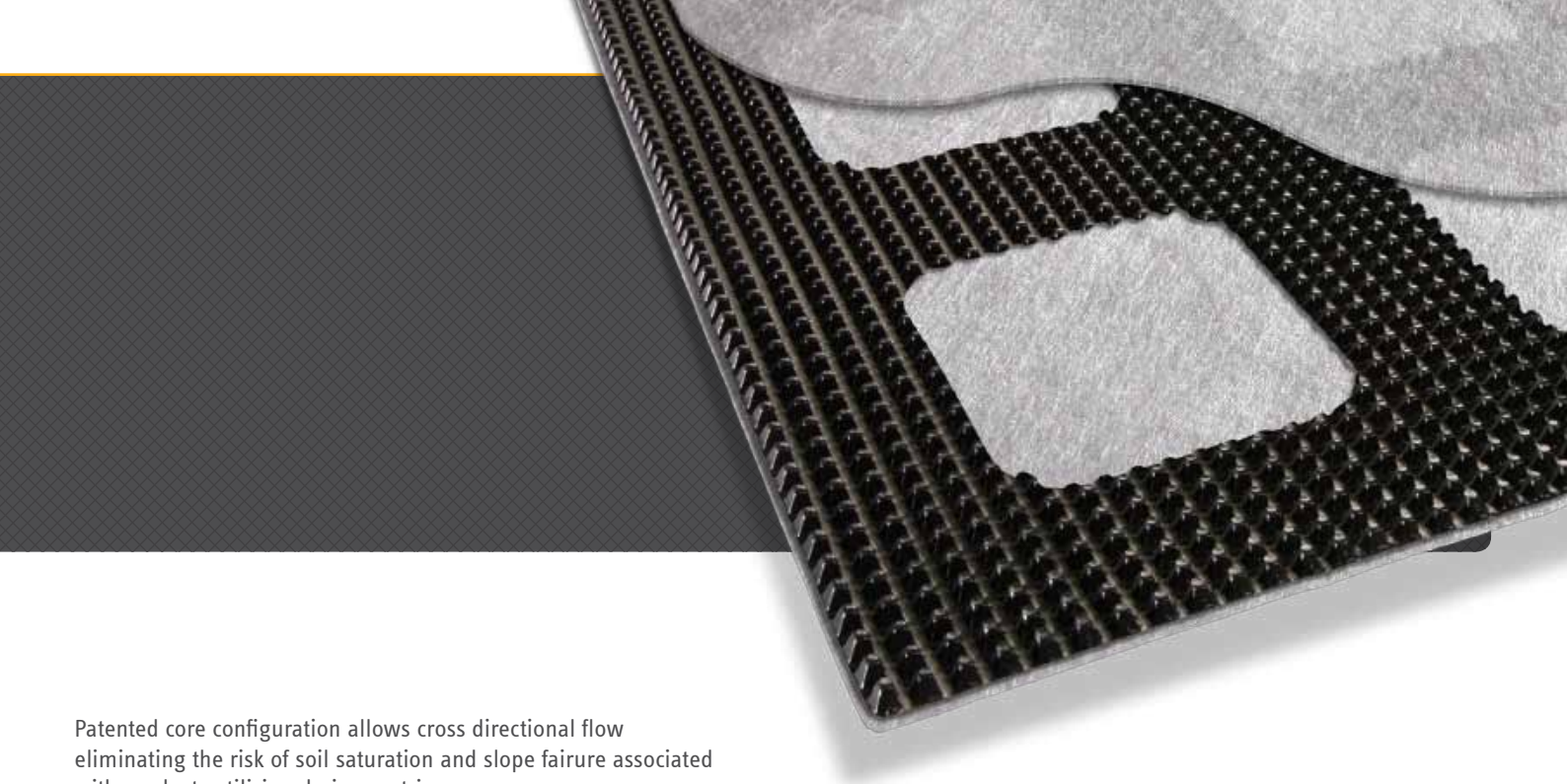
This could represent an improvement in the factor of safety for the stability of very steep slopes. Alternatively this could enable the steepening of the slopes at the same factor of safety with the obvious commercial benefits in terms of increased capacity.



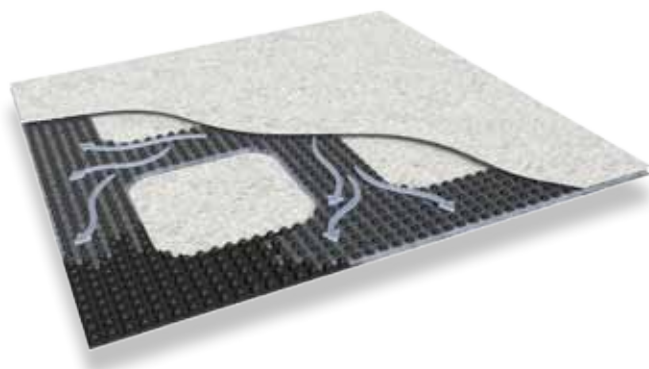
Key Features

- Enhanced frictional performance
- Unique interlocking with soil backfill
- Superior frictional performance to any other conventional geocomposite drainage layer enabling construction of steeper slopes
- Provides drainage capacity in both long and cross direction
- Available in 3 thicknesses to provide adequate flow capacity for specific applications
- Patented geocomposite drainage layer with specifically designed drainage core to provide optimum frictional and drainage performance for steep slope installations
- Cost effective drainage layer for ground water drainage applications





Patented core configuration allows cross directional flow eliminating the risk of soil saturation and slope failure associated with products utilising drainage strips.



It offers a combination of high flow capacity, separation and reinforcement that is required on many civil engineering applications.

Pozidrain G consists a cusped HDPE drainage lattice sandwiched between two layers of medium weight non-woven filtration/ protection geotextile. The innovative use of a drainage lattice allows cross flow within the drainage composite offering significant advantages over other products of that utilise drainage strips, rather than a lattice, within their composition.

Pozidrain G range

		G4	G6	G7
Thickness	mm	4	6	7
Flow capacity	l/m/s	0.3	0.6	1.0

Full data sheets available on request





abg ltd. E7 Meltham Mills Rd, Meltham, West Yorkshire, HD9 4DS
t 01484 852096 e suds@abgltd.com w www.abgltd.com @abg_ltd



This literature together with technical data, specifications, design guidance, technical advice, installation instructions or product samples can be obtained by contacting ABG Ltd. All information supplied in this brochure is supplied in good faith and without charge to enable reasonable assessment of the practical performance of ABG products. Final determination of the suitability of information or material for the use contemplated and the manner of the use is the sole responsibility of the user. As design and installation is beyond the control of ABG (unless specifically requested) no warranty is given or implied and the information does not form part of any contract. ABG reserve the right to update the information within at any time without prior notice. ©2015 ABG Ltd.