

**FIRE RING MAIN SIZE AND MATERIAL TBC  
(ASSUMED PE PIPE)**

**FIRE HYDRANT POSITIONS TBC**

## ATTENUATION SIZE & FORM TBC

## DUCTING TO INTERCEPTOR AND ATTENUATION TBC

**FIRE DELUGE VALVE KIOSK  
LOCATION ,SIZE, DRAINAGE &  
POWER CONNECTION TBC**

NOTES

## GENERAL

1. DO NOT SCALE FROM THIS DRAWING.
2. ALL DIMENSIONS ARE IN MILLIMETRES (mm) & ALL LEVELS ARE IN METRES (m) AOD, UNLESS STATED OTHERWISE.
3. ALL DIMENSIONS & LEVELS TO BE CHECKED ON SITE AND ANY DISCREPANCIES SHOULD BE REPORTED TO GHD LIVGUNN.
4. THIS DRAWING IS TO BE READ IN CONJUNCTION WITH ALL RELEVANT PROJECT STANDARDS AND SPECIFICATIONS.

**DRAINAGE:**

1. ALL DRAINAGE WORKS TO BE CARRIED OUT IN ACCORDANCE WITH CESWI 7TH EDITION
2. NEW DRAINS ARE UNDERGROUND PVC-U IN ACCORDANCE WITH BS 4660. PROCESS WATER DRAINS TO BE HATHERNWAE CHEMICAL RESISTANCE - TBC
3. PIPE JOINTS IMMEDIATELY ADJACENT TO STRUCTURES AND CHAMBERS ARE FULLY ARTICULATED ROCKER PIPE JOINTS.
4. ROCKER PIPES ARE 600mm LONG U.N.O ROCKER PIPES TO BE POSITIONED MINIMUM ACHIEVABLE DISTANCE FROM MANHOLE OR CHAMBER WITH ALLOWANCE FOR INSTALLATION OF FLEXIBLE JOINT
5. ALL BURIED PIPES AND DUCTS UNDER STRUCTURE TO BE ENCASED IN MIN 150mm THICK C16/20 MASS CONCRETE. ALSO WHERE GROUND COVER IS LESS THAN 900mm.
6. PIPE BEDDING DETAILS SHOWN ON DRAWINGS:  
BARRY\_01\_DWG\_01\_20135 & 20136

**LEGEND:**

- HYDRANT RING MAIN
- SURFACE WATER DRAIN
- FOUL WATER DRAIN
- PROCESS WATER DRAIN  
(AS HATHERNWARE THERMACHEM PIPEWORK)
- ELECTRICAL DUCTS
- POTABLE WATER MAIN  
(AS PURITON BARRIER PIPE OSA)

- |      |                            |
|------|----------------------------|
| SW00 | SURFACE WATER MANHOLE      |
| FW00 | FOUL WATER MANHOLE         |
| DP00 | ELECTRICAL DRAWPIT         |
| RWP  | RAIN WATER PIPE            |
| GU00 | ROAD GULLY                 |
| HYP  | HYDRANT POINT (PROPOSED)   |
| IV   | ISOLATION VALVE (PROPOSED) |
| BD   | BACK DROP                  |
| FDVK | FIRE DELUGE VALVE KIOSK    |

**REFERENCE DRAWINGS :**

BARRY\_01\_DWG\_01\_20131 - SITE SERVICES GA SHEET 1 OF 4  
BARRY\_01\_DWG\_01\_20132 - SITE SERVICES GA SHEET 2 OF 4  
BARRY\_01\_DWG\_01\_20133 - SITE SERVICES GA SHEET 3 OF 4  
BARRY\_01\_DWG\_01\_20134 - SITE SERVICES GA SHEET 4 OF 4  
BARRY\_01\_DWG\_01\_20135 - SITE SERVICES DETAILS SHEET 1  
BARRY\_01\_DWG\_01\_20136 - SITE SERVICES DETAILS SHEET 2

## 20 EXPORT FROM A 3D MODEL

DRAWING TO BE REPRODUCED IN COLOUR

**PRELIMINARY**

B	04.10.16	UPDATED FOR ATTENUATION	JW	MS	GB
A	01.06.16	FIRST ISSUE	JW	MS	GB
Rev	Date	Description	By	Chk	App

## Revision



**The Studio**  
51 Brookfield Road  
Cheadle  
SK8 1ES  
  
0161 491 4600  
info@ghdlivigunn.com

CLIENT



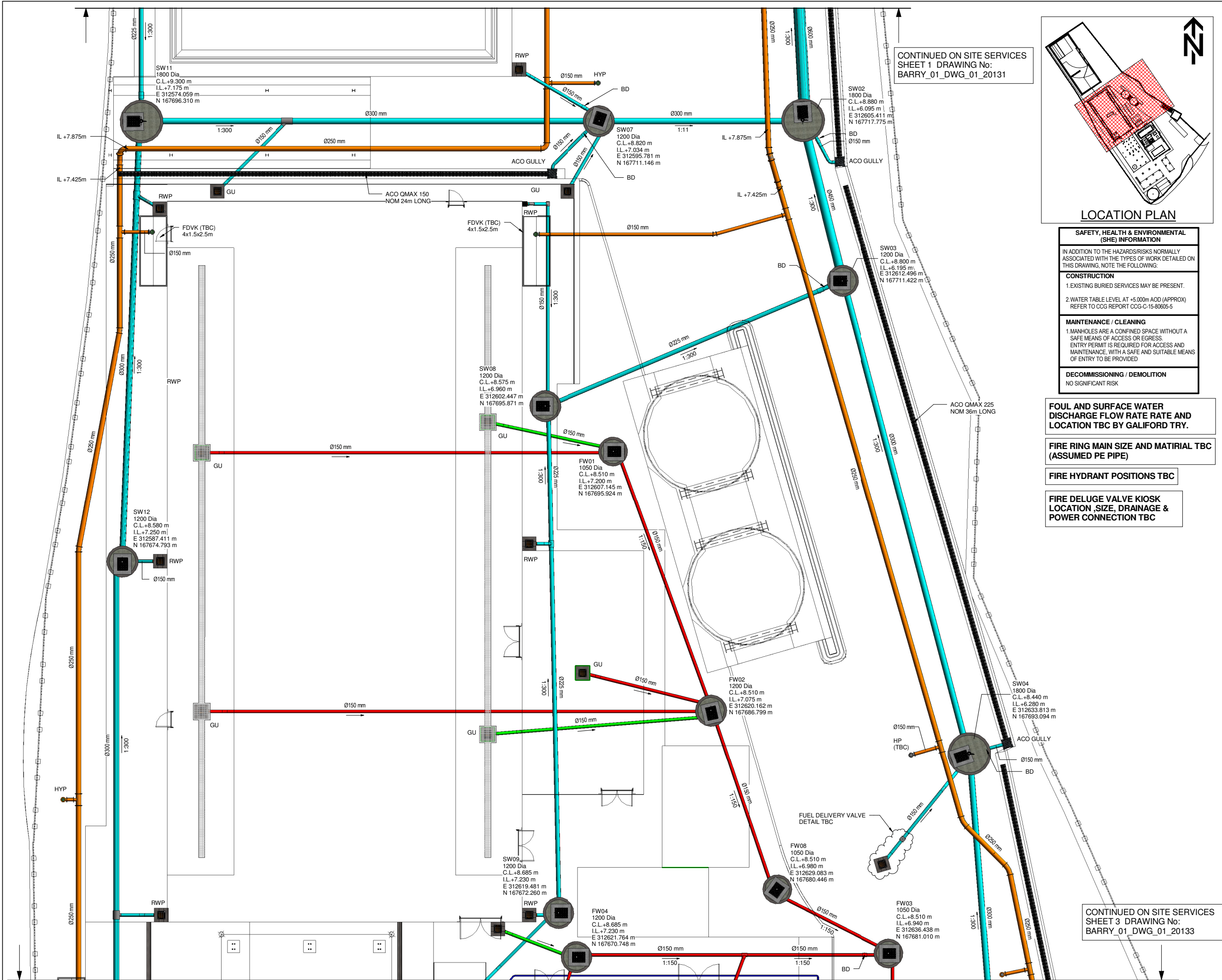
PROJECT  
BARRY BIOMASS UK NO 2 LIMITED

SITE SERVICES. SHEET 1

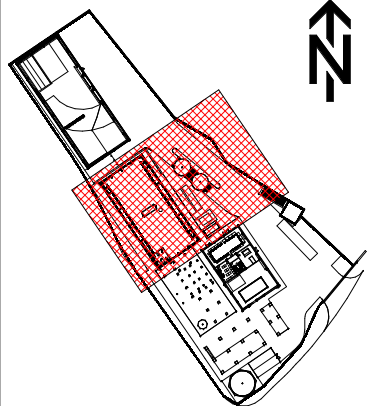
SCALE	DRAWING SIZE A1
-------	--------------------

DWG No.	BARRY_01_DWG_01_20131	REV.	B
---------	-----------------------	------	---

CONTINUED ON SITE SERVICES  
SHEET 2 DRAWING No:  
BARRY 01 DWG 01 20132



CONTINUED ON SITE SERVICES  
SHEET 1 DRAWING No:  
BARRY\_01\_DWG\_01\_20131



### LOCATION PLAN

#### SAFETY, HEALTH & ENVIRONMENTAL (SHE) INFORMATION

IN ADDITION TO THE HAZARDS/RISKS NORMALLY ASSOCIATED WITH THE TYPES OF WORK DETAILED ON THIS DRAWING, NOTE THE FOLLOWING:

#### CONSTRUCTION

- EXISTING BURIED SERVICES MAY BE PRESENT.
- WATER TABLE LEVEL AT +5.000m AOD (APPROX) REFER TO CCG REPORT CCG-C-15-80605-5

#### MAINTENANCE / CLEANING

- MANHOLES ARE A CONFINED SPACE WITHOUT A SAFE MEANS OF ACCESS OR EGRESS. ENTRY PERMIT IS REQUIRED FOR ACCESS AND MAINTENANCE, WITH A SAFE AND SUITABLE MEANS OF ENTRY TO BE PROVIDED

#### DECOMMISSIONING / DEMOLITION

NO SIGNIFICANT RISK

FOUL AND SURFACE WATER  
DISCHARGE FLOW RATE RATE AND  
LOCATION TBC BY GALIFORD TRY.

FIRE RING MAIN SIZE AND MATIRIAL TBC  
(ASSUMED PE PIPE)

FIRE HYDRANT POSITIONS TBC

FIRE DELUGE VALVE KIOSK  
LOCATION, SIZE, DRAINAGE &  
POWER CONNECTION TBC

DO NOT SCALE - IF IN DOUBT ASK

NOTES

GENERAL

- DO NOT SCALE FROM THIS DRAWING.
- ALL DIMENSIONS ARE IN MILLIMETRES (mm) & ALL LEVELS ARE IN METRES (m) AOD, UNLESS STATED OTHERWISE.
- ALL DIMENSIONS & LEVELS TO BE CHECKED ON SITE AND ANY DISCREPANCIES SHOULD BE REPORTED TO GHD LIVIGUNN.
- THIS DRAWING IS TO BE READ IN CONJUNCTION WITH ALL RELEVANT PROJECT STANDARDS AND SPECIFICATIONS.

DRAINAGE:

- ALL DRAINAGE WORKS TO BE CARRIED OUT IN ACCORDANCE WITH CESW1 7TH EDITION
- NEW DRAINS ARE UNDERGROUND PVC-U IN ACCORDANCE WITH BS 4660. PROCESS WATER DRAINS TO BE HATHERNWARE CHEMICAL RESISTANCE - TBC
- PIPE JOINTS IMMEDIATELY ADJACENT TO STRUCTURES AND CHAMBERS ARE FULLY ARTICULATED ROCKER PIPE JOINTS.
- ROCKER PIPES ARE 600mm LONG U.N.O ROCKER PIPES TO BE POSITIONED MINIMUM ACHIEVABLE DISTANCE FROM MANHOLE OR CHAMBER WITH ALLOWANCE FOR INSTALLATION OF FLEXIBLE JOINT
- ALL BURIED PIPES AND DUCTS UNDER STRUCTURE TO BE ENCASED IN MIN 150mm THICK C16/20 MASS CONCRETE. ALSO WHERE GROUND COVER IS LESS THAN 900mm.
- PIPE BEDDING DETAILS SHOWN ON DRAWINGS: BARRY\_01\_DWG\_01\_20135 & 20136

LEGEND:

HYDRANT RING MAIN

SURFACE WATER DRAIN

FOUL WATER DRAIN

PROCESS WATER DRAIN (AS HATHERNWARE THERMACHEM PIPEWORK)

ELECTRICAL DUCTS

POTABLE WATER MAIN (AS PURITON BARRIER PIPE OSA)

SW00 SURFACE WATER MANHOLE

FW00 FOUL WATER MANHOLE

DP00 ELECTRICAL DRAWPIT

RWP RAIN WATER PIPE

GU00 ROAD GULLY

HYP HYDRANT POINT (PROPOSED)

IV ISOLATION VALVE (PROPOSED)

BD BACK DROP

FDVK FIRE DELUGE VALVE KIOSK

REFERENCE DRAWINGS:

BARRY\_01\_DWG\_01\_20131 - SITE SERVICES GA SHEET 1 OF 4  
BARRY\_01\_DWG\_01\_20132 - SITE SERVICES GA SHEET 2 OF 4  
BARRY\_01\_DWG\_01\_20133 - SITE SERVICES GA SHEET 3 OF 4  
BARRY\_01\_DWG\_01\_20134 - SITE SERVICES GA SHEET 4 OF 4  
BARRY\_01\_DWG\_01\_20135 - SITE SERVICES DETAILS SHEET 1  
BARRY\_01\_DWG\_01\_20136 - SITE SERVICES DETAILS SHEET 2

2D EXPORT FROM A 3D MODEL

ALL ALTERATIONS TO BE MADE IN THE MODEL FILE

DRAWING TO BE REPRODUCED IN COLOUR

PRELIMINARY

B

04.10.16

UPDATED FOR ATTENUATION

JW

MS

GB

A

24.03.16

FIRST ISSUE

JW

MS

GB

Rev

Date

Description

By

Chk

App

Revision

GHD

LIVIGUNN

The Studio

51 Brookfield Road

Cheadle

SK8 1ES

0161 491 4600

info@ghdlivigunn.com

CLIENT

GallifordTry

PROJECT

BARRY BIOMASS UK NO 2 LIMITED

TITLE

SITE SERVICES. SHEET 2

SCALE

1:100

DRAWING SIZE

A1

DWG No

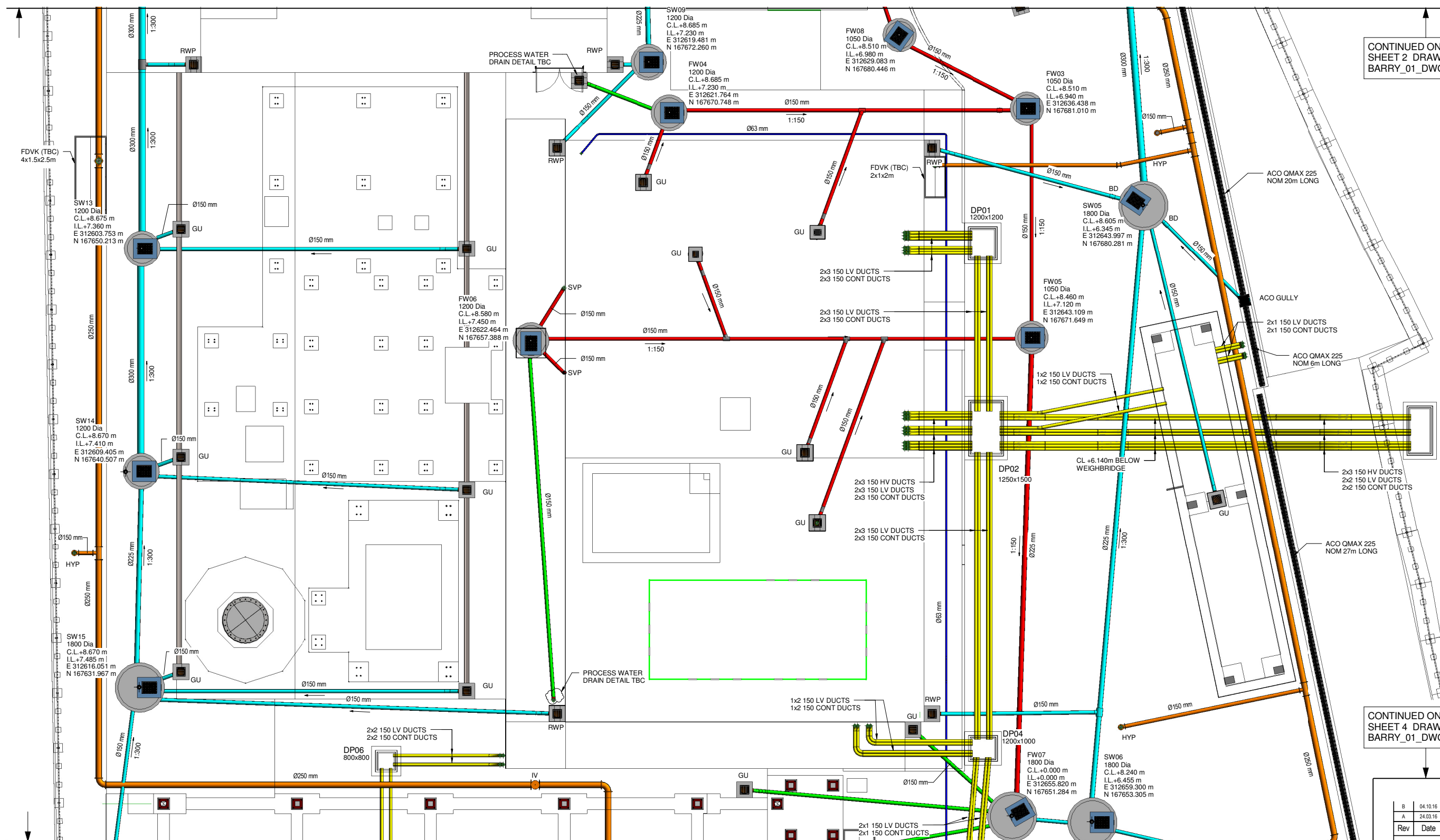
BARRY\_01\_DWG\_01\_20132

REV.

B



CONTINUED ON SITE SERVICES  
SHEET 2 DRAWING No:  
BARRY\_01\_DWG\_01\_20132



CONTINUED ON SITE SERVICES  
SHEET 4 DRAWING No:  
BARRY\_01\_DWG\_01\_20134

## NOTES

### GENERAL

- DO NOT SCALE FROM THIS DRAWING.
- ALL DIMENSIONS ARE IN MILLIMETRES (mm) & ALL LEVELS ARE IN METRES (m) AOD, UNLESS STATED OTHERWISE.
- ALL DIMENSIONS & LEVELS TO BE CHECKED ON SITE AND ANY DISCREPANCIES SHOULD BE REPORTED TO GHD LIVIGUNN.
- THIS DRAWING IS TO BE READ IN CONJUNCTION WITH ALL RELEVANT PROJECT STANDARDS AND SPECIFICATIONS.

### REFERENCE DRAWINGS:

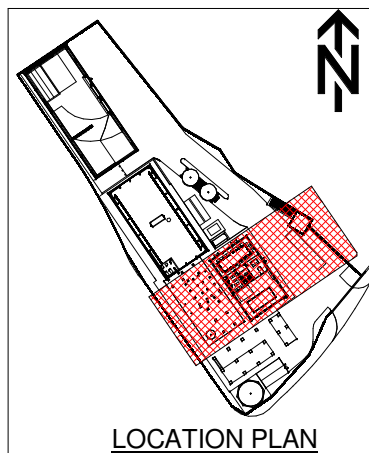
BARRY\_01\_DWG\_01\_20131 - SITE SERVICES GA SHEET 1 OF 4  
BARRY\_01\_DWG\_01\_20132 - SITE SERVICES GA SHEET 2 OF 4  
BARRY\_01\_DWG\_01\_20133 - SITE SERVICES GA SHEET 3 OF 4  
BARRY\_01\_DWG\_01\_20134 - SITE SERVICES GA SHEET 4 OF 4  
BARRY\_01\_DWG\_01\_20135 - SITE SERVICES DETAILS SHEET 1  
BARRY\_01\_DWG\_01\_20136 - SITE SERVICES DETAILS SHEET 2

### DRAINAGE:

- ALL DRAINAGE WORKS TO BE CARRIED OUT IN ACCORDANCE WITH CESWI 7TH EDITION
- NEW DRAINS ARE UNDERGROUND PVC-U IN ACCORDANCE WITH BS 4660. PROCESS WATER DRAINS TO BE HATHERNWARE CHEMICAL RESISTANCE - TBC
- PIPE JOINTS IMMEDIATELY ADJACENT TO STRUCTURES AND CHAMBERS ARE FULLY ARTICULATED ROCKER PIPE JOINTS.
- ROCKER PIPES ARE 600mm LONG U.N.O ROCKER PIPES TO BE POSITIONED MINIMUM ACHIEVABLE DISTANCE FROM MANHOLE OR CHAMBER WITH ALLOWANCE FOR INSTALLATION OF FLEXIBLE JOINT
- ALL BURIED PIPES AND DUCTS UNDER STRUCTURE TO BE ENCASED IN MIN 150mm THICK C16/20 MASS CONCRETE. ALSO WHERE GROUND COVER IS LESS THAN 900mm.
- PIPE BEDDING DETAILS SHOWN ON DRAWINGS: BARRY\_01\_DWG\_01\_20135 & 20136

### LEGEND:

- HYDRANT RING MAIN
- SURFACE WATER DRAIN
- FOUL WATER DRAIN
- PROCESS WATER DRAIN (AS HATHERNWARE THERMACHEM PIPEWORK)
- ELECTRICAL DUCTS
- POTABLE WATER MAIN (AS PURITON BARRIER PIPE OSA)
- SW00 SURFACE WATER MANHOLE
- FW00 FOUL WATER MANHOLE
- DP00 ELECTRICAL DRAWPIT
- RWP RAIN WATER PIPE
- GU00 ROAD GULLY
- HYP HYDRANT POINT (PROPOSED)
- IV ISOLATION VALVE (PROPOSED)
- BD BACK DROP
- FDVK FIRE DELUGE VALVE KIOSK



### SAFETY, HEALTH & ENVIRONMENTAL (SHE) INFORMATION

IN ADDITION TO THE HAZARDS/RISKS NORMALLY ASSOCIATED WITH THE TYPES OF WORK DETAILED ON THIS DRAWING, NOTE THE FOLLOWING:

#### CONSTRUCTION

- EXISTING BURIED SERVICES MAY BE PRESENT.
- WATER TABLE LEVEL AT +5.000m AOD (APPROX) REFER TO CCG REPORT CCG-C-15-80605-5

#### MAINTENANCE / CLEANING

- MANHOLES ARE A CONFINED SPACE WITHOUT A SAFE MEANS OF ACCESS OR EGRESS. ENTRY PERMIT IS REQUIRED FOR ACCESS AND MAINTENANCE WITH A SAFE AND SUITABLE MEANS OF ENTRY TO BE PROVIDED

#### DECOMMISSIONING / DEMOLITION

NO SIGNIFICANT RISK

**2D EXPORT FROM A 3D MODEL**  
ALL ALTERATIONS TO BE MADE IN THE MODEL FILE

DRAWING TO BE REPRODUCED IN COLOUR

**PRELIMINARY**

**FIRE DELUGE VALVE KIOSK  
LOCATION, SIZE, DRAINAGE &  
POWER CONNECTION TBC**

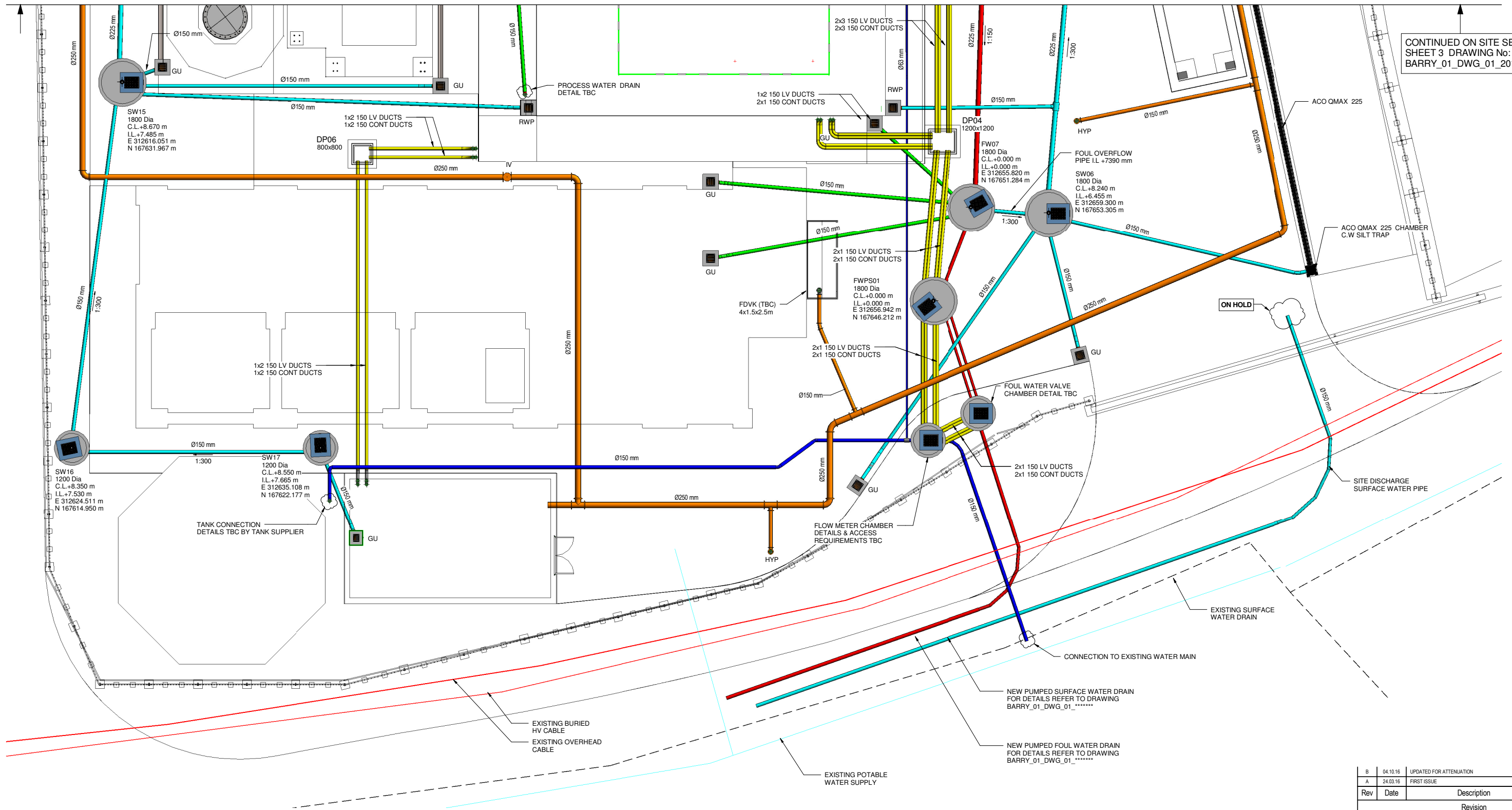
**FOUL AND SURFACE WATER  
DISCHARGE FLOW RATE RATE AND  
LOCATION TBC BY GALIFORD TRY.**

**FIRE RING MAIN SIZE AND MATIRIAL TBC  
(ASSUMED PE PIPE)**

**FIRE HYDRANT POSITIONS TBC**

B	04.10.16	UPDATED FOR ATTENUATION	JW	MS	GB
A	24.03.16	FIRST ISSUE	JW	MS	GB
Rev	Date	Description	By	Chk	App
Revision					
<b>The Studio</b> 51 Brookfield Road Cheadle SK8 1ES 0161 491 4600 info@ghdlivigunn.com					
<b>GallifordTry</b>					
<b>PROJECT</b> BARRY BIOMASS UK NO 2 LIMITED					
<b>TITLE</b> SITE SERVICES. SHEET 3					
<b>SCALE</b> 1:100			<b>DRAWING SIZE</b> A1		
<b>DWG No</b> BARRY_01_DWG_01_20133			<b>REV.</b> B		

CONTINUED ON SITE SERVICES  
SHEET 3 DRAWING No:  
BARRY\_01\_DWG\_01\_20133



## NOTES

## GENERAL

- DO NOT SCALE FROM THIS DRAWING.
- ALL DIMENSIONS ARE IN MILLIMETRES (mm) & ALL LEVELS ARE IN METRES (m) AOD, UNLESS STATED OTHERWISE.
- ALL DIMENSIONS & LEVELS TO BE CHECKED ON SITE AND ANY DISCREPANCIES SHOULD BE REPORTED TO GHD LIVIGUNN.
- THIS DRAWING IS TO BE READ IN CONJUNCTION WITH ALL RELEVANT PROJECT STANDARDS AND SPECIFICATIONS.

## REFERENCE DRAWINGS:

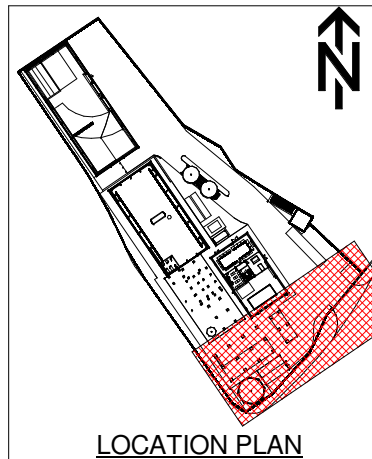
BARRY\_01\_DWG\_01\_20131 - SITE SERVICES GA SHEET 1 OF 4  
BARRY\_01\_DWG\_01\_20132 - SITE SERVICES GA SHEET 2 OF 4  
BARRY\_01\_DWG\_01\_20133 - SITE SERVICES GA SHEET 3 OF 4  
BARRY\_01\_DWG\_01\_20134 - SITE SERVICES GA SHEET 4 OF 4  
BARRY\_01\_DWG\_01\_20135 - SITE SERVICES DETAILS SHEET 1  
BARRY\_01\_DWG\_01\_20136 - SITE SERVICES DETAILS SHEET 2

## DRAINAGE:

- ALL DRAINAGE WORKS TO BE CARRIED OUT IN ACCORDANCE WITH CESWI 7TH EDITION
- NEW DRAINS ARE UNDERGROUND PVC-U IN ACCORDANCE WITH BS 4660. PROCESS WATER DRAINS TO BE HATHERWARE CHEMICAL RESISTANCE - TBC
- PIPE JOINTS IMMEDIATELY ADJACENT TO STRUCTURES AND CHAMBERS ARE FULLY ARTICULATED ROCKER PIPE JOINTS.
- ROCKER PIPES ARE 600mm LONG U.N.O ROCKER PIPES TO BE POSITIONED MINIMUM ACHIEVABLE DISTANCE FROM MANHOLE OR CHAMBER WITH ALLOWANCE FOR INSTALLATION OF FLEXIBLE JOINT
- ALL BURIED PIPES AND DUCTS UNDER STRUCTURE TO BE ENCASED IN MIN 150mm THICK C16/20 MASS CONCRETE. ALSO WHERE GROUND COVER IS LESS THAN 900mm.
- PIPE BEDDING DETAILS SHOWN ON DRAWINGS: BARRY\_01\_DWG\_01\_20135 & 20136

## LEGEND:

- |                                       |  |
|---------------------------------------|--|
| <span style="color: orange;">—</span> | HYDRANT RING MAIN  |
| <span style="color: cyan;">—</span>   | SURFACE WATER DRAIN  |
| <span style="color: red;">—</span>    | FOUL WATER DRAIN   |
| <span style="color: green;">—</span>  | PROCESS WATER DRAIN<br>(AS HATHERWARE THERMACHEM PIPEWORK) |
| <span style="color: yellow;">—</span> | ELECTRICAL DUCTS   |
| <span style="color: blue;">—</span>   | POTABLE WATER MAIN<br>(AS PURITON BARRIER PIPE OSA)        |
| SW00                                  | SURFACE WATER MANHOLE                                      |
| FW00                                  | FOUL WATER MANHOLE   |
| DP00                                  | ELECTRICAL DRAWPIT   |
| RWP                                   | RAIN WATER PIPE  |
| GU00                                  | ROAD GULLY   |
| HYP                                   | HYDRANT POINT (PROPOSED)                                   |
| IV                                    | ISOLATION VALVE (PROPOSED)                                 |
| BD                                    | BACK DROP  |
| FDVK                                  | FIRE DELUGE VALVE KIOSK                                    |



SAFETY, HEALTH & ENVIRONMENTAL (SHE) INFORMATION	
IN ADDITION TO THE HAZARDS/RISKS NORMALLY ASSOCIATED WITH THE TYPES OF WORK DETAILED ON THIS DRAWING, NOTE THE FOLLOWING:	
CONSTRUCTION	
1. EXISTING BURIED SERVICES MAY BE PRESENT.	
2. WATER TABLE LEVEL AT +5.000m AOD (APPROX) REFER TO CCG REPORT CCG-C-15-80605-5	
MAINTENANCE / CLEANING	
1. MANHOLES ARE A CONFINED SPACE WITHOUT A SAFE MEANS OF ACCESS OR EGRESS. ENTRY PERMIT IS REQUIRED FOR ACCESS AND MAINTENANCE. WITH A SAFE AND SUITABLE MEANS OF ENTRY TO BE PROVIDED	
DECOMMISSIONING / DEMOLITION	
NO SIGNIFICANT RISK	

2D EXPORT FROM A 3D MODEL  
ALL ALTERATIONS TO BE MADE IN THE MODEL FILE

DRAWING TO BE REPRODUCED IN COLOUR



PRELIMINARY

FIRE DELUGE VALVE KIOSK  
LOCATION, SIZE, DRAINAGE &  
POWER CONNECTION TBC

FOUL AND SURFACE WATER  
DISCHARGE FLOW RATE RATE AND  
LOCATION TBC BY GALIFORD TRY.

FIRE RING MAIN SIZE AND MATERIAL TBC  
(ASSUMED PE PIPE)

FIRE HYDRANT POSITIONS TBC

B	04.10.16	UPDATED FOR ATTENUATION		JW	MS	GB
A	24.03.16	FIRST ISSUE		JW	MS	GB
Rev	Date	Description		By	Chk	App
Revision						
				<b>The Studio</b> 51 Brookfield Road Cheadle SK8 1ES  0161 491 4600 info@ghdlivigunn.com		
CLIENT				 <b>GallifordTry</b>		
PROJECT				BARRY BIOMASS UK NO 2 LIMITED		
TITLE				SITE SERVICES. SHEET 4		
SCALE 1:100			DRAWING SIZE A1			
DWG No		BARRY_01_DWG_01_20134			REV. B	