

# Variation notice with introductory note

Environmental Permitting (England & Wales) Regulations 2007

---

ConvaTec Ltd Rhymney Gelling  
Fibre Plant

ConvaTec Limited  
Unit 1  
Heads of the Valleys Industrial Estate  
Rhymney  
Tredegar  
NP22 5RL

---

Variation notice number  
EA/EPR/NP3433BC/V003

Permit number  
NP3433BC

# ConvaTec Limited

## Permit Number NP3433BC

### Introductory note

#### ***This introductory note does not form a part of the permit***

The following notice, which is issued pursuant to regulation 20 and Part 1 of Schedule 5 of the Environmental Permitting (England and Wales) Regulations S.I.2007 No. 3538 (the Regulations), gives notice of the variation of an environmental permit to operate a regulated facility.

Brief description of the changes introduced by this variation notice.

The purpose of this variation is to introduce provision for four new reaction suites within the installation (three of which will be operational immediately and the fourth of which will not be used initially but will be available for future expansion). Also the introduction of an aqueous based spraying system to silverise small volumes of existing MediceL product utilising a fallow suite within Unit 1.

The changes will not add or alter any of the listed or directly associated activities of the installation as detailed in the current PPC permit, and will not result in the introduction of any substances not included in the scope of the current permit.

The reaction suites currently operating within the existing installation area will operate concurrently with the Enhancement Project suites during commissioning and will then be mothballed.

#### **Description of Installation**

The ConvaTec gelling fibre plant produces a range of chemically processed fibre products from Cellulose, a natural polymer present in all plants. The products are derived from a man-made Cellulose fibre, under strict hygiene conditions, using a patented chemical process. The products are clean white bands of fibres and non-woven fabric used in wound dressings as the fibres and fabric are highly absorbent and gel instantly on contact with water. In addition to the original fibre products, a silver version has been developed to have a broad range of microbial actions due to the incorporation of silver compounds. Products are produced in either a tow form, which is a textile term for lengths of fibre bands made up of many thousands of individual fibres, or pre-formed cellulose non-woven fabric.

Schedule 1 of this notice lists any deleted conditions, Schedule 2 lists any amended conditions and Schedule 3 lists any conditions that have been added.

Status Log of the permit		
Detail	Date	Response Date
Application NP3433BC	Received 06/10/2004	
Response to request for information	Request dated 08/12/2004	Response dated 28/01/2005
Permit NP3433BC	Determined 24/03/2005	
Application for Variation PP3433LP	Received 07/09/2005	
Variation PP3433LP	Determined 01/12/2005	
Application for Variation EA/EPR/NP3433BC/V003	Received 24/06/2008	
Variation EA/EPR/NP3433BC/V003 issued	Issued 04/03/2009	

**Other Part A installation permits relating to this installation**

Operator	Permit Number	Date of Issue
ConvaTec Limited	TP3535LH	17/11/2006

End of Introductory Note

Notice of variation

Environmental Permitting  
(England and Wales) Regulations 2007

Permit number

**NP3433BC**

The Environment Agency in exercise of its powers under Regulation 20 of the Environmental Permitting (England and Wales) Regulations 2007 (SI 2000 No 3538) varies the permit as set out below.

**ConvaTec Limited** ("the operator"),

Whose registered office is:-

GDC, First Avenue

Deeside Industrial Estate

Deeside

Flintshire

CH5 2NU

Company registration number 1309639

holds a permit to operate a regulated facility at

**ConvaTec Ltd Rhymney Gelling Fibre Plant**

**Unit 1**

**Heads of the Valleys Industrial Estate**


**Rhymney**

**Tredegar**

**NP22 5RL**

and that permit is varied to the extent set out in Schedules 1 to 3 of this notice.

The notice shall take effect from 02/03/2009

Name	Date
<b>A.W Leakey</b> 	04/03/2009

Authorised on behalf of the Agency

## Schedule 1 – conditions to be deleted

1. None.

## Schedule 2 – conditions and tables to be amended

2. Condition 2.2.1.2 shall be amended as follows:-

2.2.1.2 Emissions to air from the emission points in table 2.2.1 shall only arise from the source(s) specified in that Table.

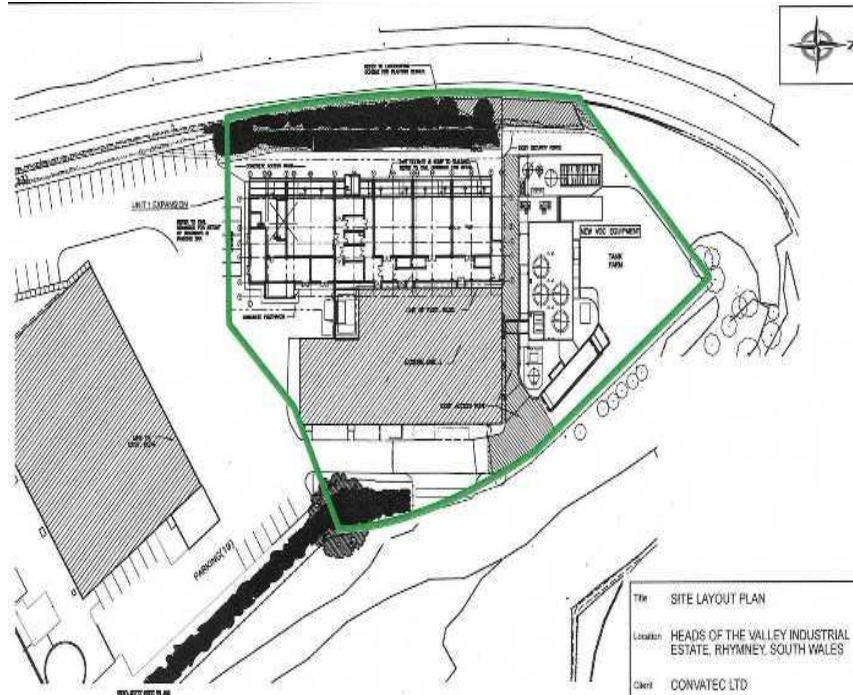
Table 2.2.1: Emission points to Air		
Emission point reference or description	Source	Location of emission point
A1	Bioscrubber stack	Point A1 on Drawing 5-ZTH-1103 EMISSION POINTS
A2	Reactor Room Extract	Point A2 on Drawing 5-ZTH-1103 EMISSION POINTS
A3	Dust Extraction	Point A3 on Drawing 5-ZTH-1103 EMISSION POINTS
A4	Steam Boiler	Point A4 on Drawing 5-ZTH-1103 EMISSION POINTS
A5	Medicel Room Extract EP34	Point EP34 on point source emission to air layout Page 35 on Application
A6	Medicel LEV Extract EP34	Point EP35 on point source emission to air layout Page 35 on Application
A7	Silver Hydrocel Room Extract EP36	Point EP36 on point source emission to air layout Page 35 on Application
A8	Silver Hydrocel LEV Extract EP37	Point EP37 on point source emission to air layout Page 35 on Application
A9	Hydrocel Room Extract EP38	Point EP38 on point source emission to air layout Page 35 on Application
A10	Hydrocel LEV Extract EP39	Point EP39 on point source emission to air layout Page 35 on Application
A11	Fallow Suite Room Extract EPFS1	Point EPFS1 on point source emission to air layout Page 35 on Application
A12	Fallow Suite LEV Extract EPFS2	Point EPFS2 on point source emission to air layout Page 35 on Application

Note 1: Emission point A2 shall be reviewed if appropriate following completion of the enhancement project.

Note 2: Emission points A5-A12 will become active upon completion of the enhancement project.

Note 3: Or as agreed in writing with the Agency.

3. Site Plan is amended as follows:-



**Schedule 3 – conditions to be added**

4. None