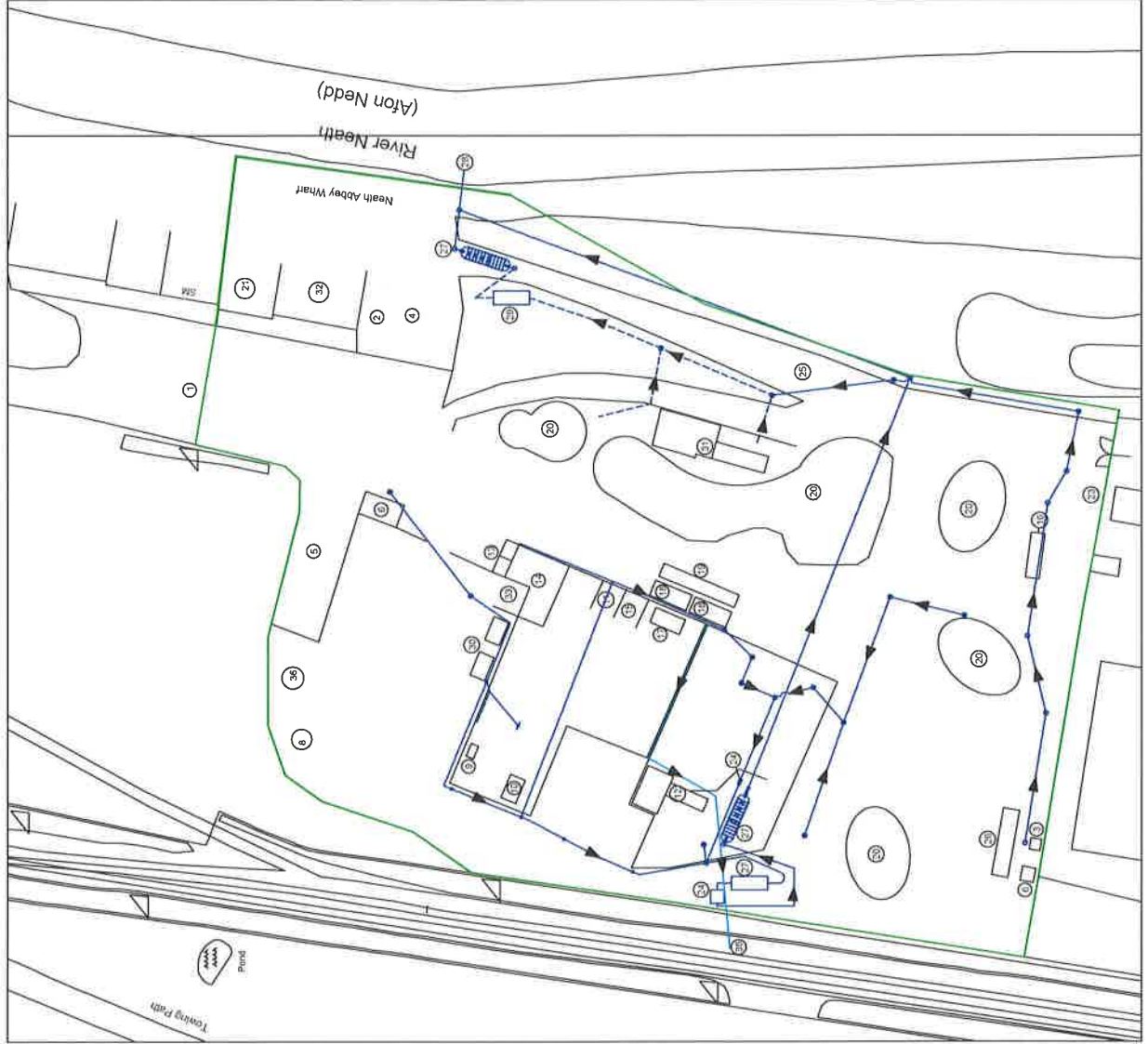


Notes  
1. This drawing has been prepared in accordance with the scope of RPS's appointment. RPS accepts no liability for any use of this document other than for the purposes for which it was prepared and provided.  
2. It is the responsibility of the recipient to ensure that the information is correct and that it is used for the purposes for which it was prepared and provided.  
3. RPS does not accept any liability for any use of this document other than for the purposes for which it was prepared and provided.

Legend

- Permit Boundary
- Site Drainage
- Roof Drainage

- Legend
- 1: Site Entrance & Gates
  - 2: Shearing
  - 3: Transformer
  - 4: Turnings Bay "Bunded"
  - 5: Staff & Visitor Parking
  - 6: Sub-Station
  - 8: Un Depolluted Vehicle Storage
  - 9: ELV Office
  - 10: ELV Depollution Rig
  - 11: Battery Storage
  - 12: Baler
  - 13: Oxy & Propane Storage Cages
  - 14: N/F Processing
  - 15: Ali Swarf Bay
  - 16: Engines Storage
  - 17: Bunded Oil Tanks
  - 18: Offices
  - 19: Weighbridge
  - 20: Ferrous & N/Ferrous Storage
  - 21: Ferrous Storage
  - 23: Bunded Diesel Tank
  - 24: Silt Trap
  - 25: Barrier
  - 26: Shear
  - 27: Interceptor
  - 28: Discharge to River
  - 29: Silt Pits
  - 30: Bunded Tanks For ELV Fluids
  - 31: Baler
  - 32: WEEE Storage
  - 33: Quarantine Area
  - 34: Gates
  - 35: Roof Rain Water Discharge To Brook
  - 36: Tyre Storage Area



Basemap sourced from SIMS Drawing No.  
CJBSKESITDET\_001 Rev 011  
(23/05/2014)

Rev	Description	Date	Initial	Checked

A firm Accredited to BS EN ISO 9001 & BS EN ISO 14001



2430 The Quadrant  
Aston West  
Aston  
Birmingham  
B532 4AQ  
T: +44(0)121 853 000 E: rps@rpsgroup.com F: +44(0)121 853 020

Client SIMS GROUP UK LTD.

Project SKEWEN

Title SITE LAYOUT

Status DRAFT  
Drawn By RJ  
Job Ref JER6361  
Scale @ A3 1:1,000  
Date Created AUG 15

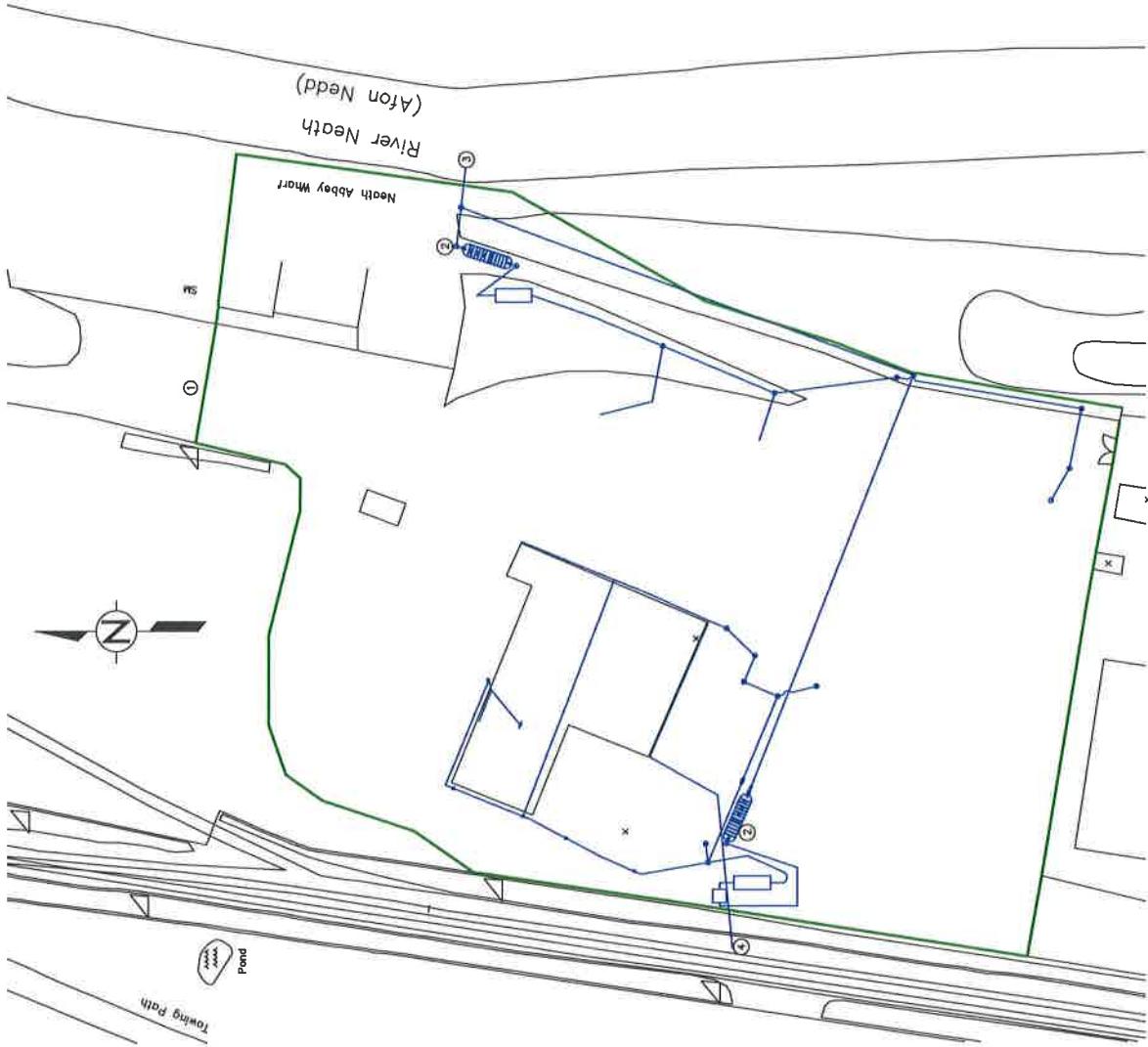
PM/Checked by CH

Drawing Number JER6361-015

Rev

rpsgroup.com

Rev/No	Revision note	Date	Signature	Checked
1				
2				
3				
4				
5				



- Legend
- 1: Site Entrance & Gates
  - 2: Interceptor
  - 3: Discharge To River
  - 4: Roof Water Discharge to Brook
- Site Boundary Highlighted In Green
- Site Drainage Highlighted In Dark Blue

Drawn by C J BANKS	Checked by G SIDNEY	Approved by - date 19_09_2012	Filename SKEWEN_SITPLAN	Date 19_09_2012	Scale 1:1000 mm A3
SIMS GROUP UK			SKEWEN_SITE_PLAN		
C:\BANKS\IT\PLN_003_R1			Rev No R1	Sheet 1/1	