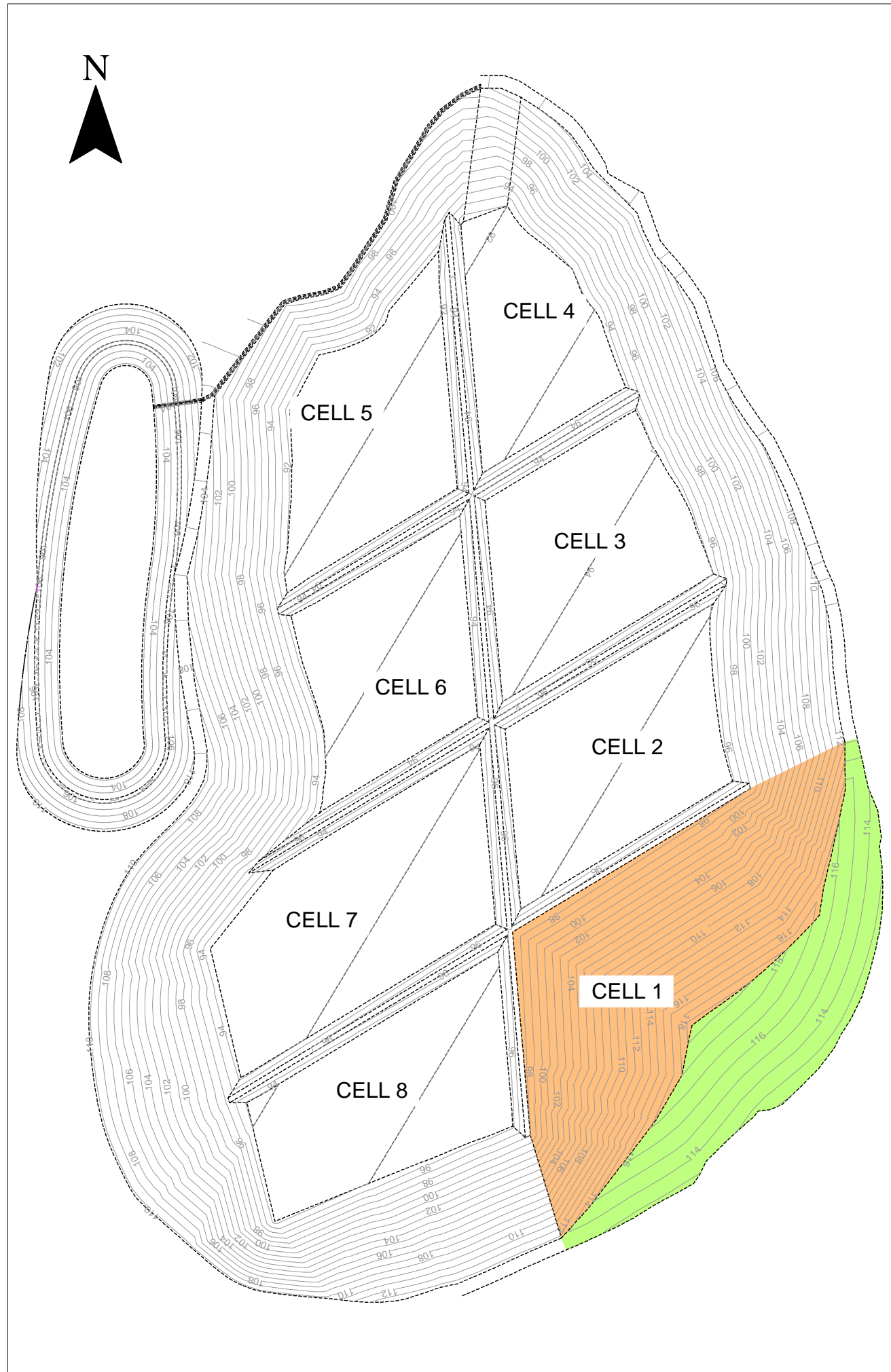
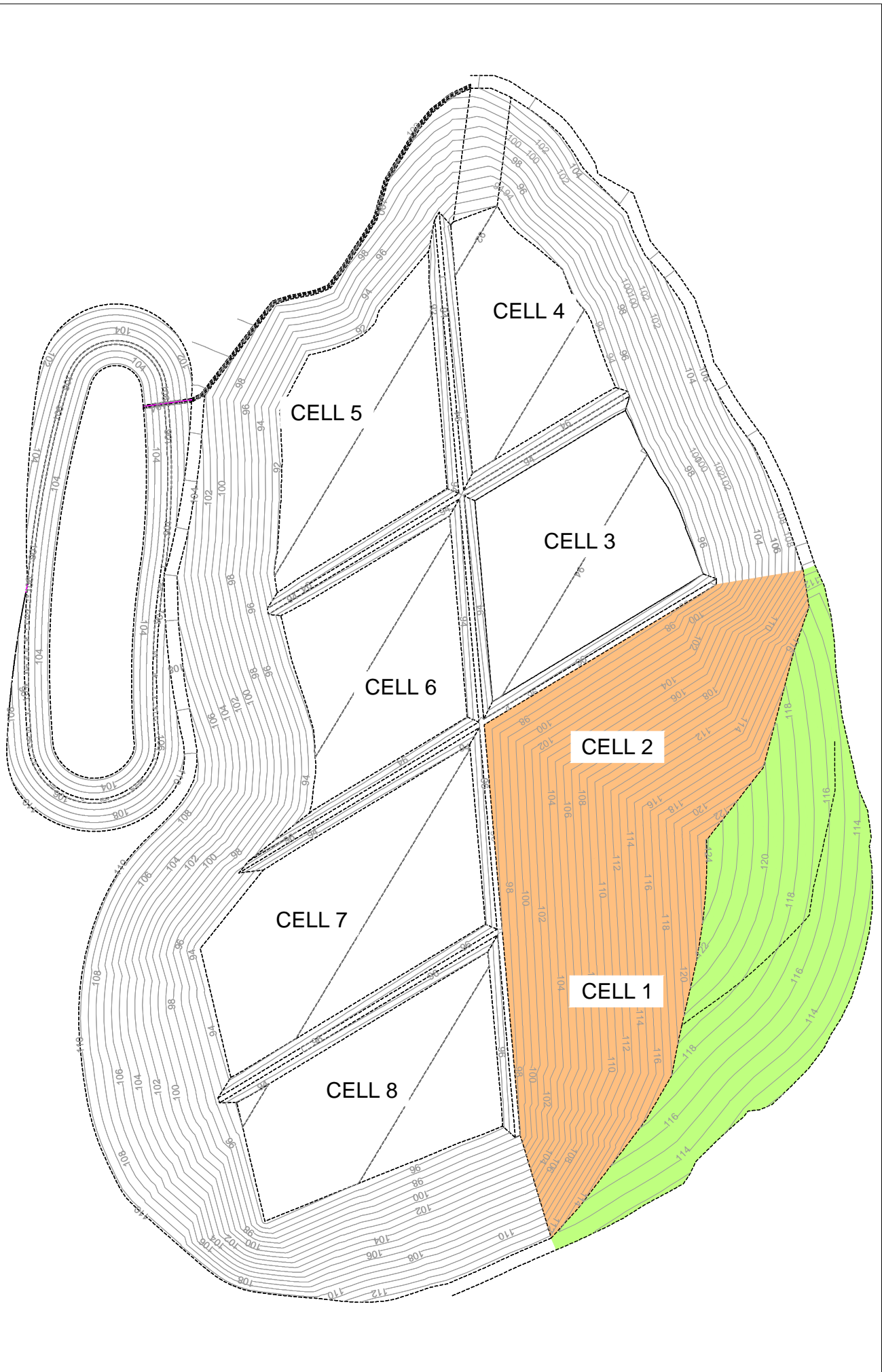


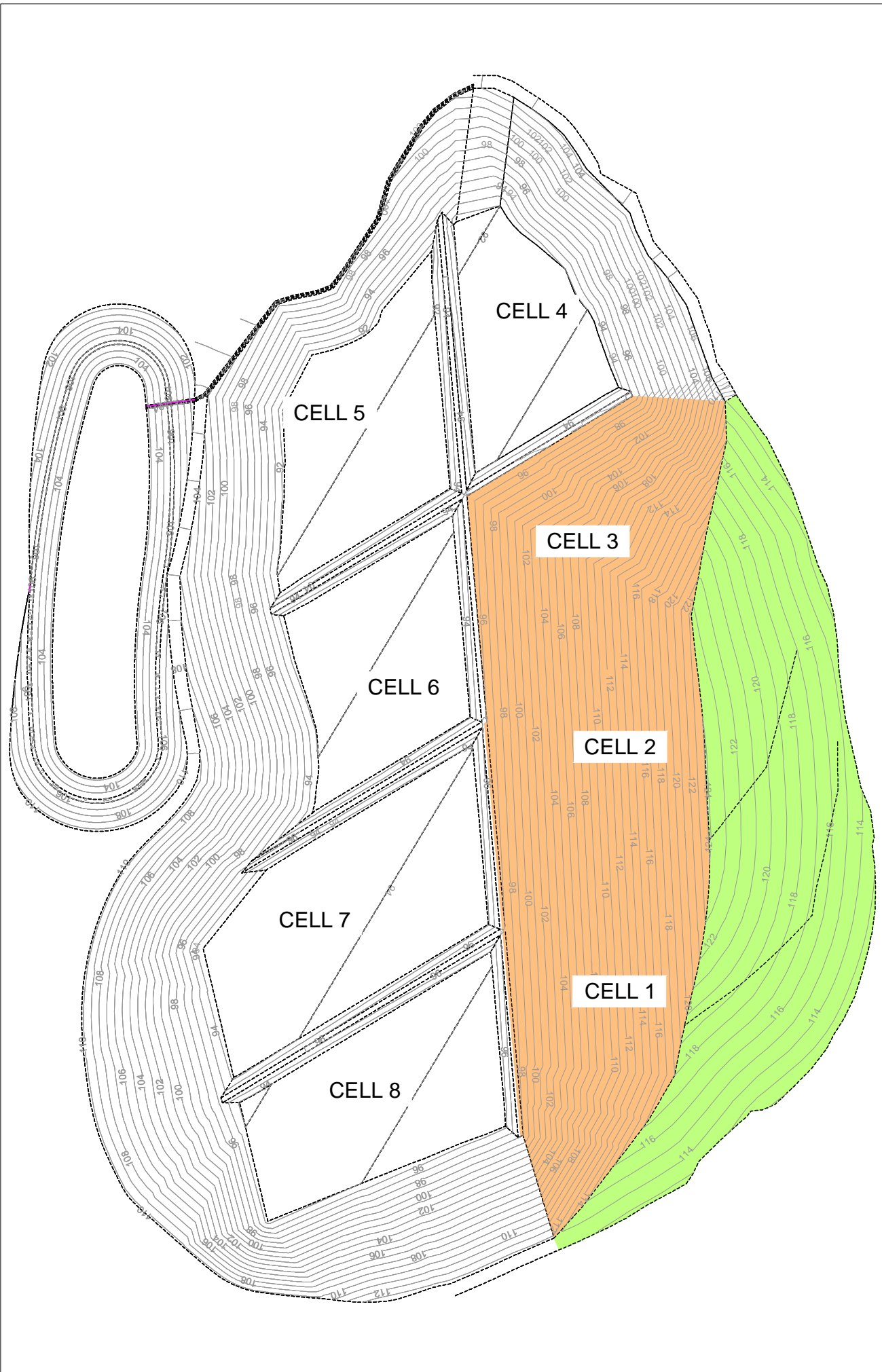
07238.00001.13.ESID5.C.L PHASING&CELL LAYOUT.dwg



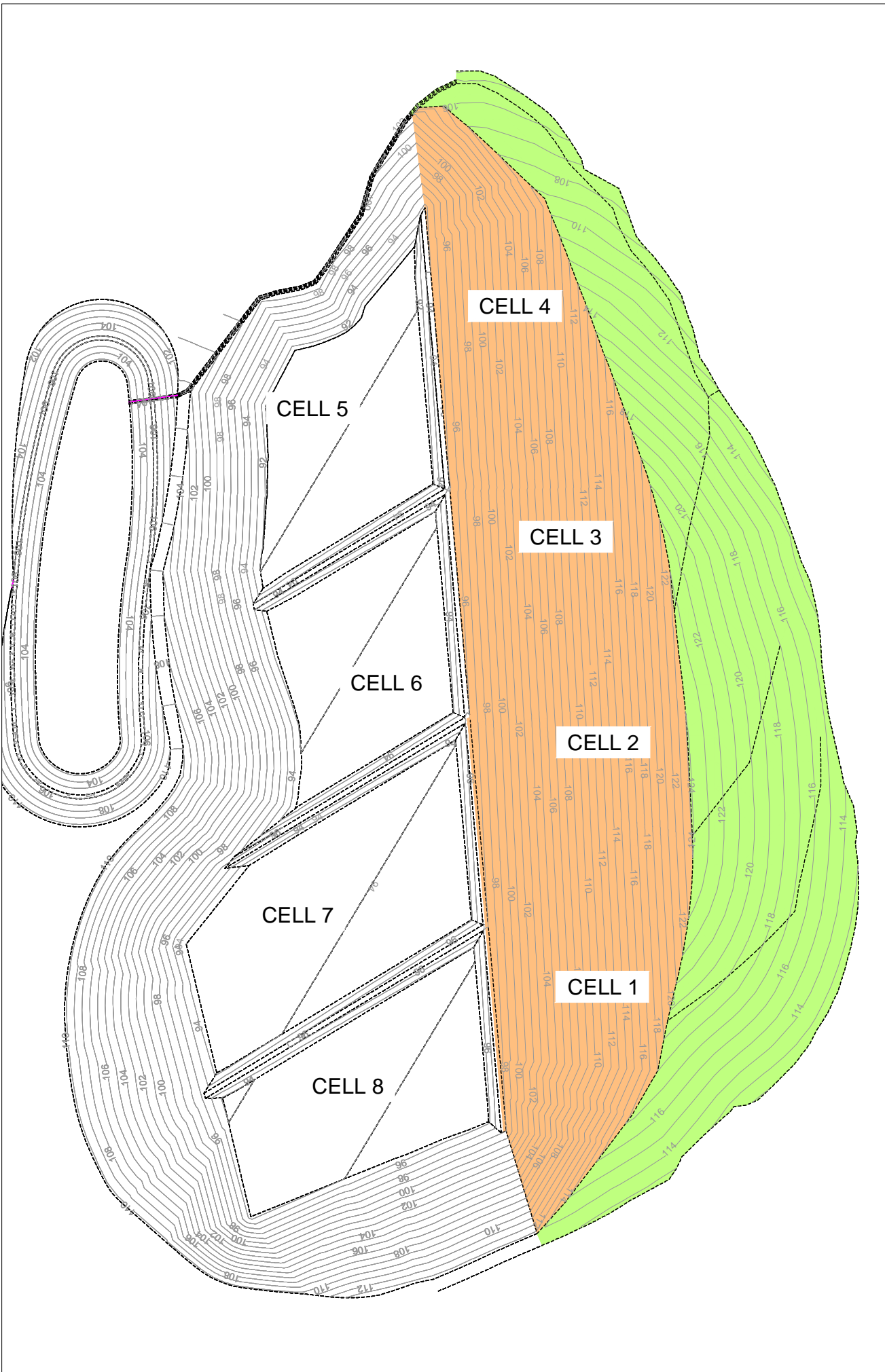
PHASE 1 - CELL 1 FILLED



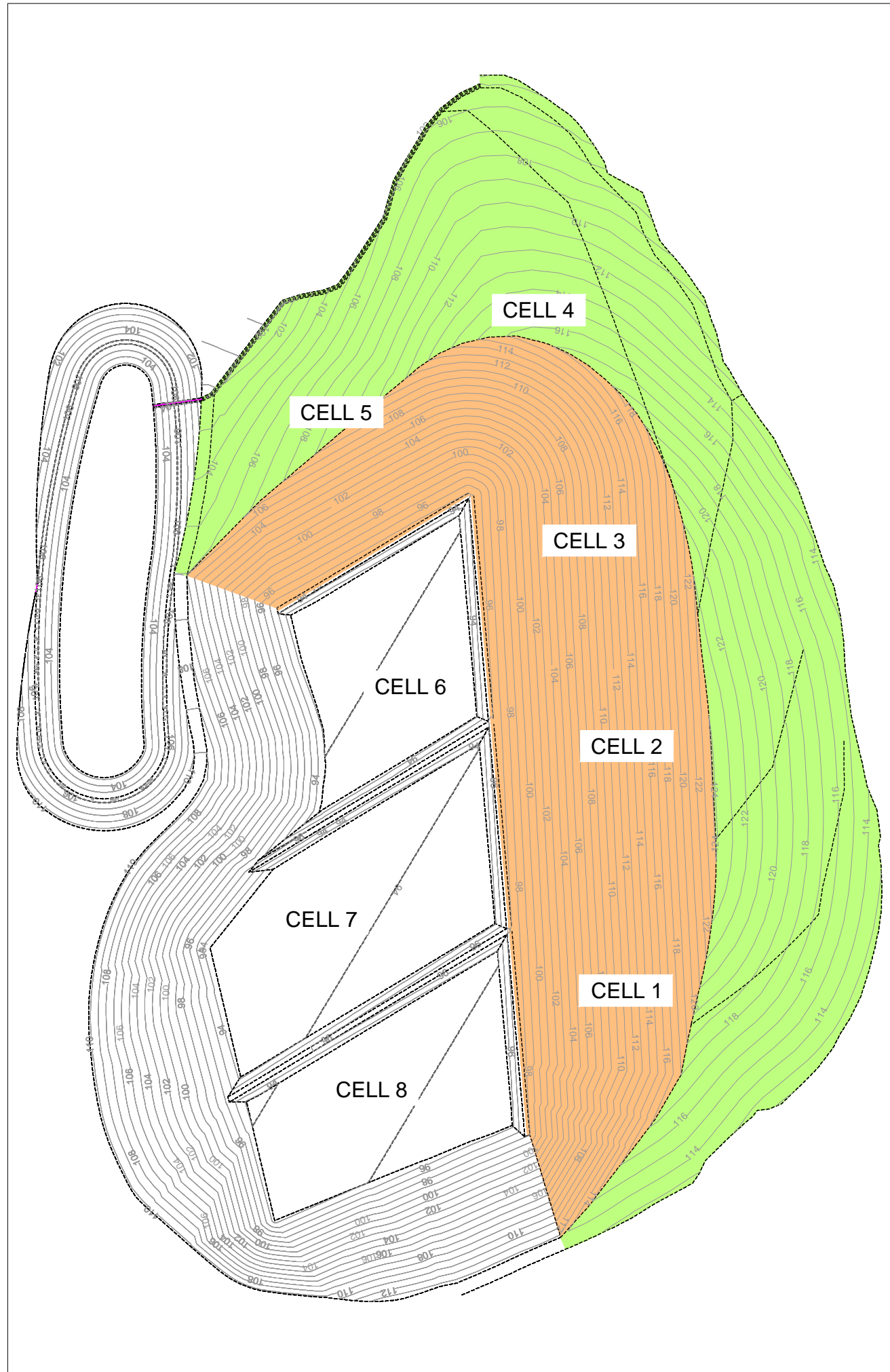
PHASE 2 - CELL 2 FILLED



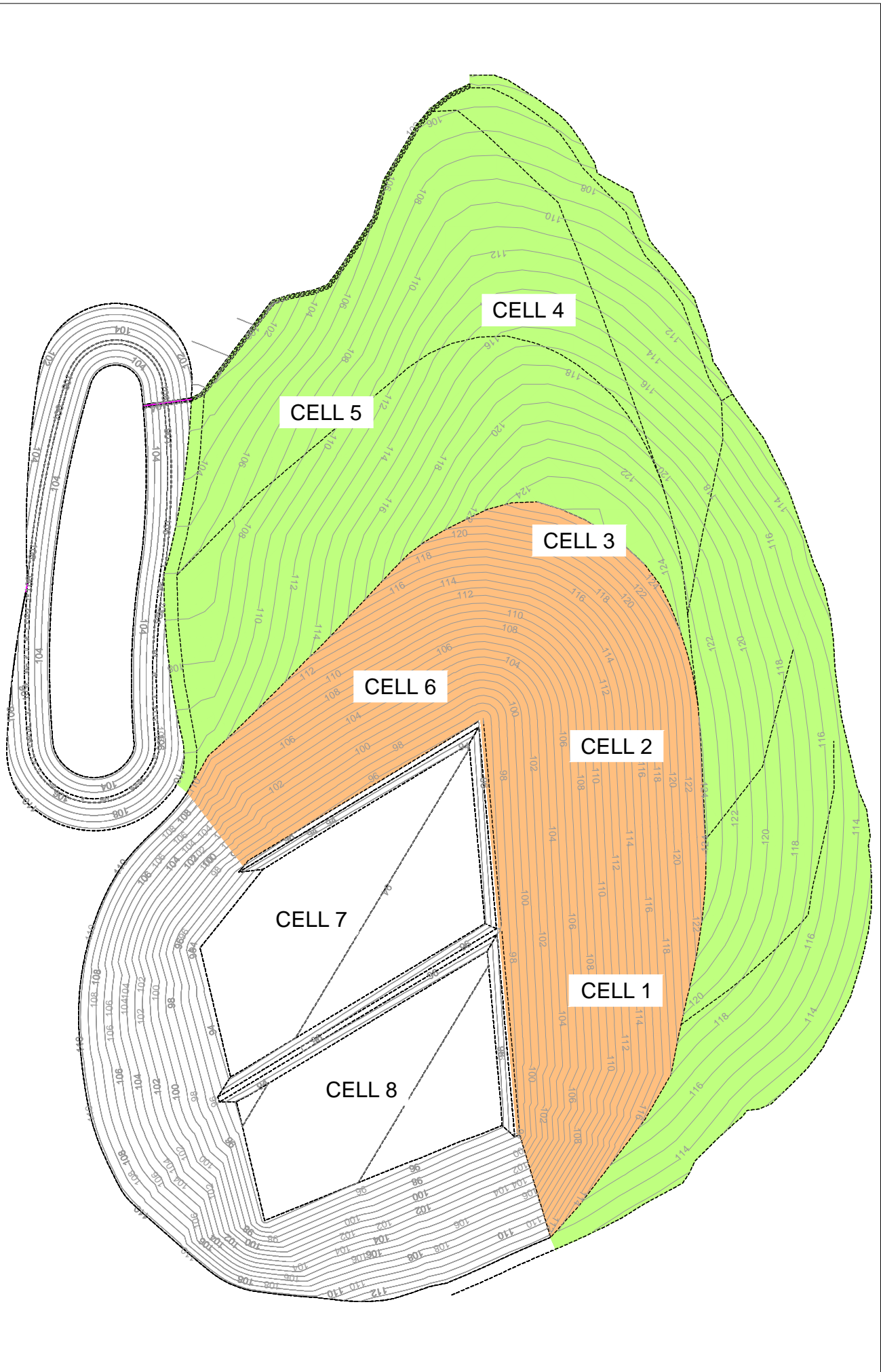
PHASE 3 - CELL 3 FILLED



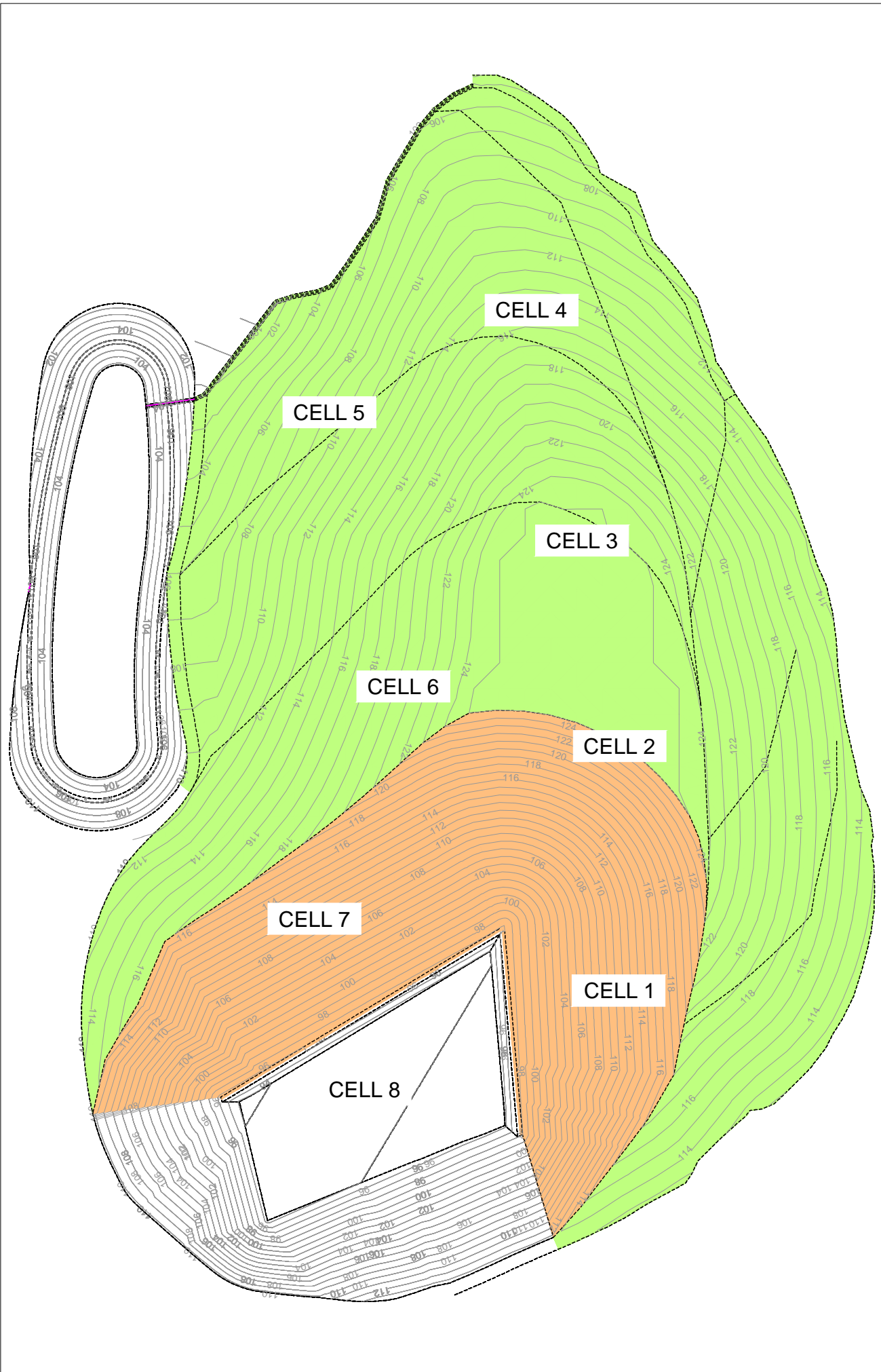
PHASE 4 - CELL 4 FILLED



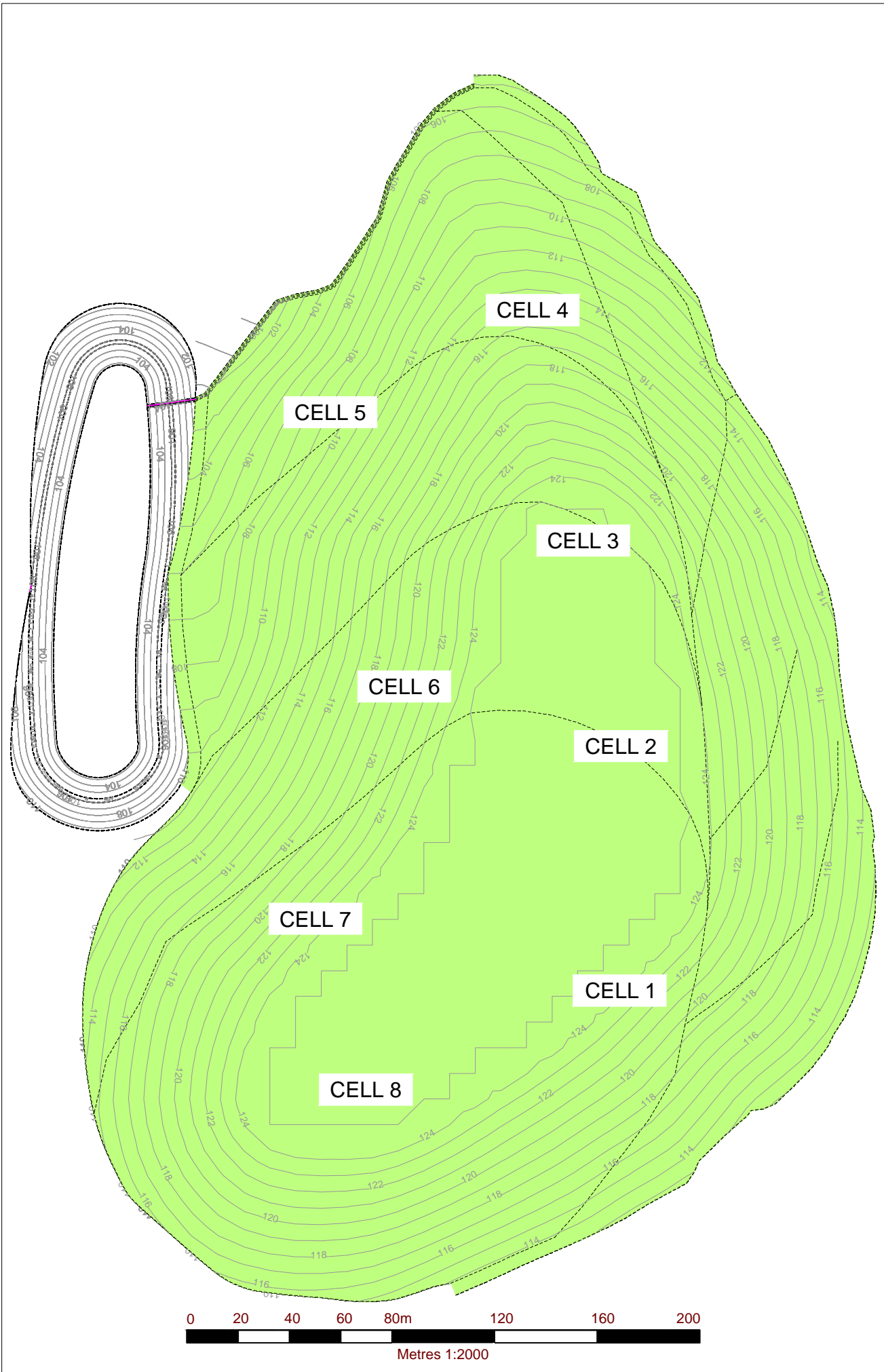
PHASE 5 - CELL 5 FILLED



PHASE 6 - CELL 6 FILLED



PHASE 7 - CELL 7 FILLED



PHASE 8 - RESTORED

LEGEND

PERMANENT CAPPING AND RESTORED

TEMPORARY CAPPING

MOLD INVESTMENTS LTD

SLR

global environmental solutions

3RD FLOOR  
THE BREW HOUSE  
JACOB STREET  
BRISTOL, BS2 0EQ  
T: 01179 064280  
www.slrconsulting.com

PARRY'S QUARRY LANDFILL  
ENVIRONMENTAL PERMIT  
APPLICATION  
PHASING AND CELL LAYOUT  
ESID5

Scale  
1:2000 @ A1

Date  
MARCH 2019

© This drawing and its content are the copyright of SLR Consulting Ltd and may not be reproduced or amended except by prior written permission. SLR Consulting Ltd accepts no liability for any amendments made by other persons.