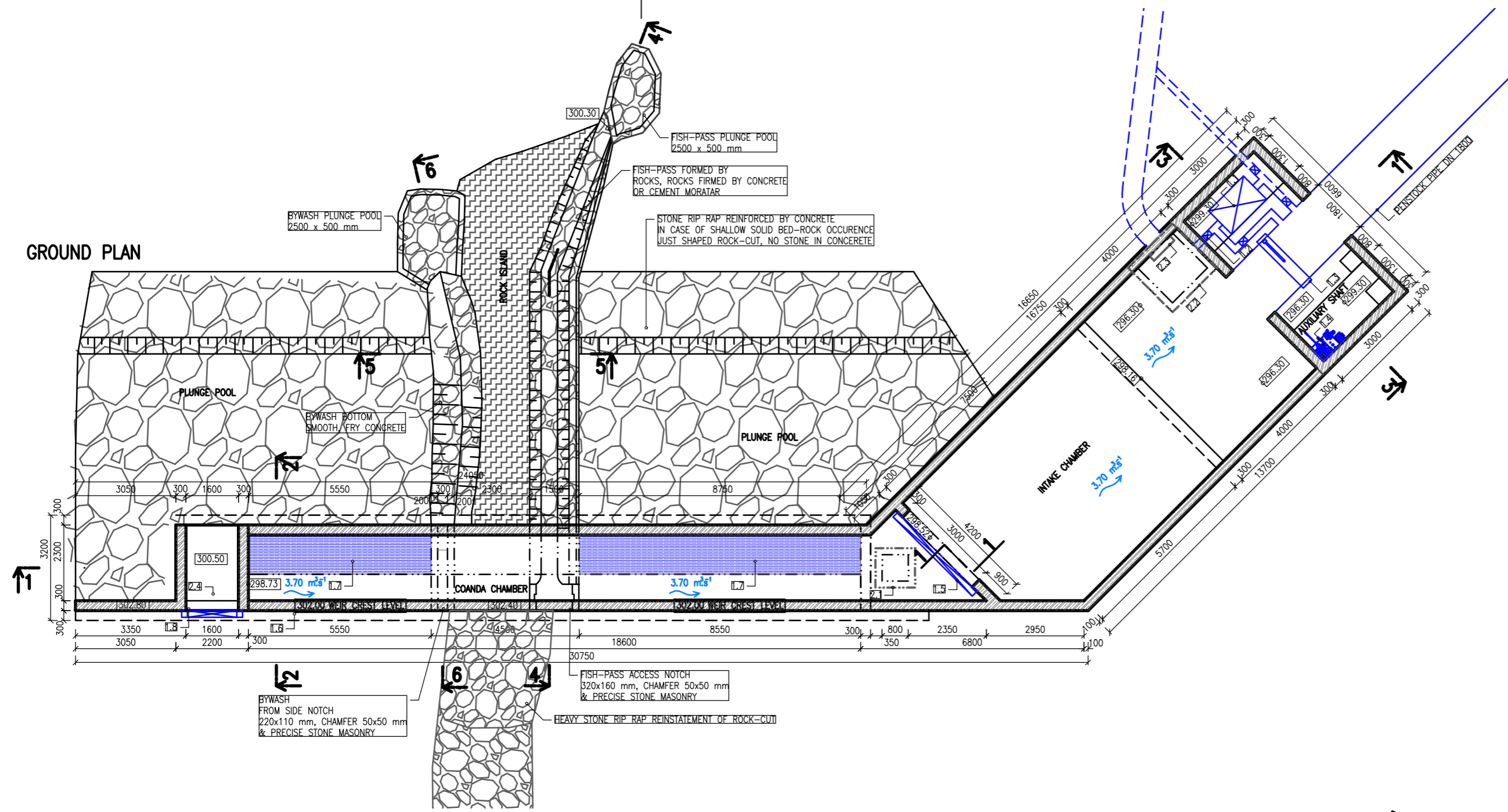
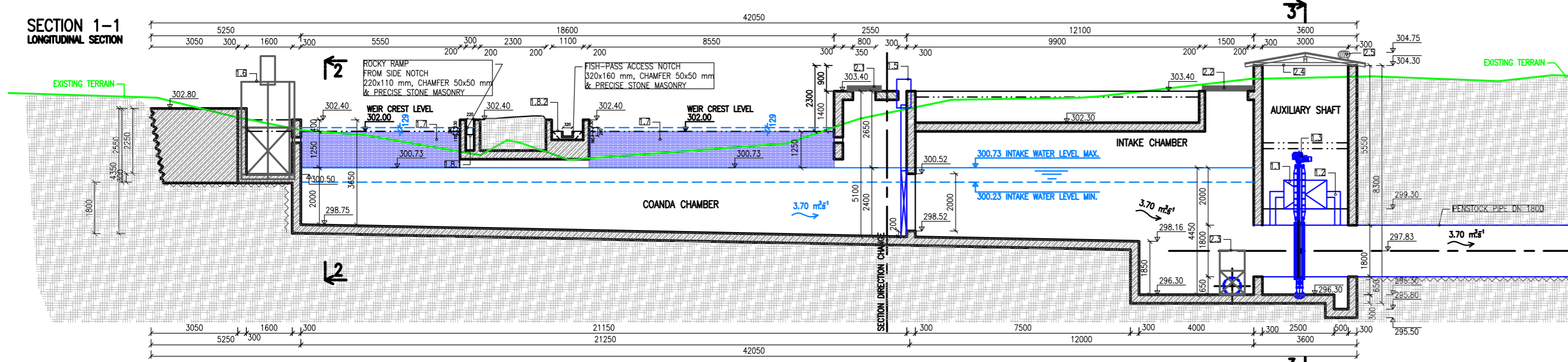


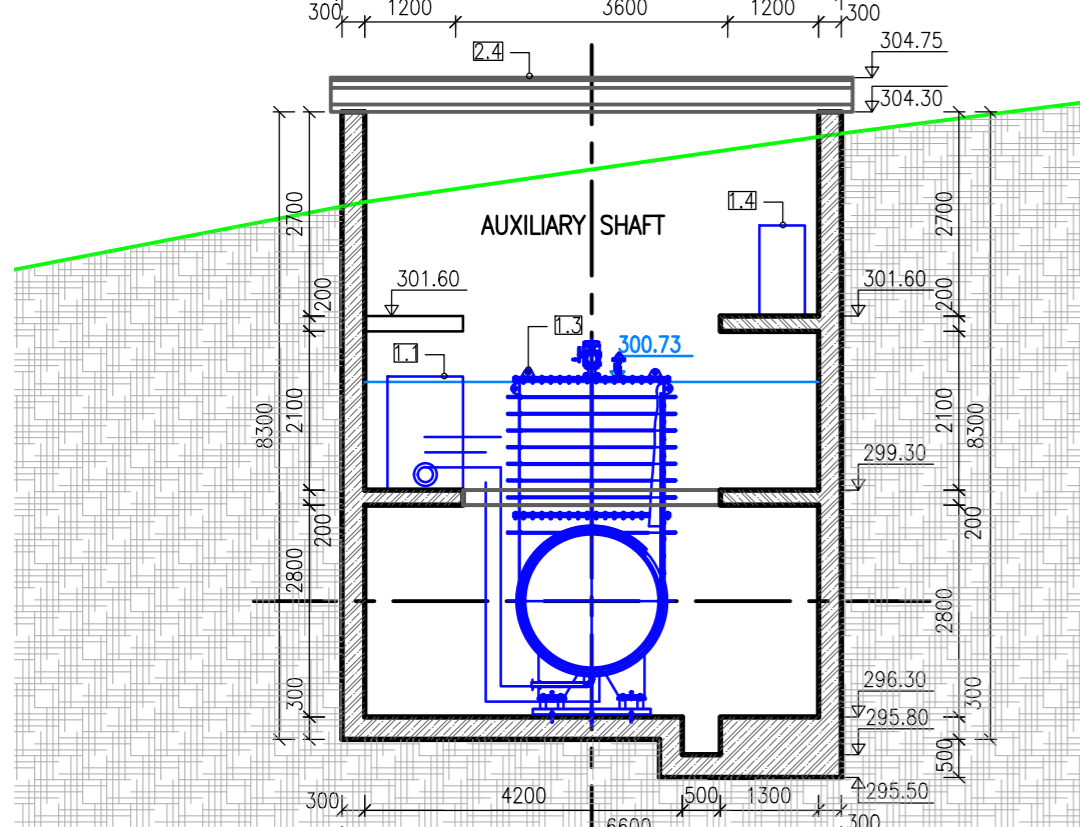
GROUND PLAN



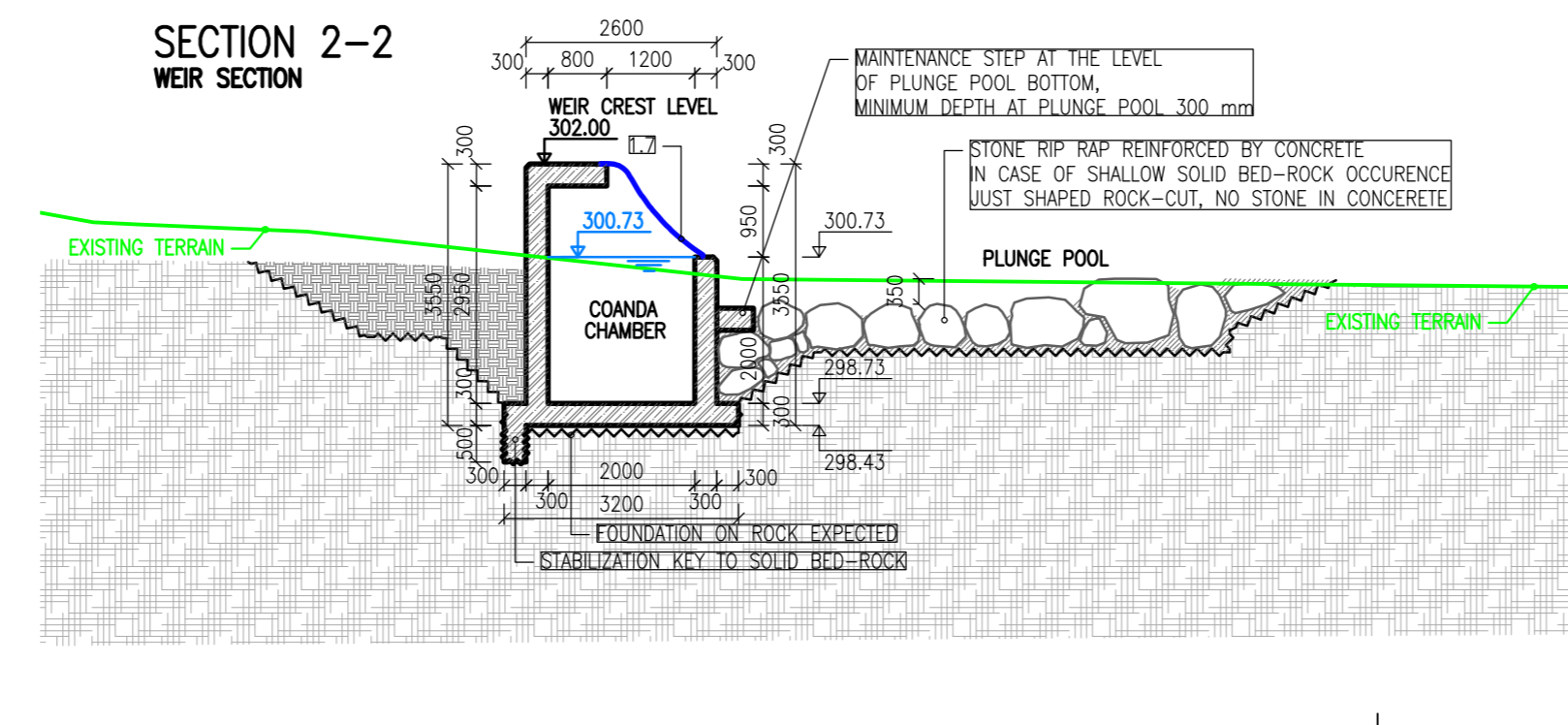
**SECTION 1-1
LONGITUDINAL SECTION**



**SECTION 3-3
AUXILIARY SHAFT**



**SECTION 2-2
WEIR SECTION**



KEY:

MECHANICAL EQUIPMENT	
1.1	PRIMING PUMP
1.2	PRIMING PIPE PIPING
1.3	MAIN INLET VALVE
1.4	HYDRAULIC AGGREGATE
1.5	INTAKE STOP LOG GATE 3000 x 2000 mm
1.6	FLUSHING GATE
1.7	COANDA SCREEN 2 mm SCREEN APERTURE
1.8.1	NOTCH FOR ROCKY RAMP, MINOR NOTCH
1.8.2	NOTCH FOR FISH PASS, MAIN NOTCH
CIVIL EQUIPMENT	
2.1	MANHOLE COVER 800 x 800 mm
2.2	MANHOLE COVER 1500 x 1500 mm
2.3	FLUSHING GATE 600 x 600 mm
2.4	REMOVABLE AUXILIARY SHAFT COVER WITH MANHOLE ACCESS
2.5	ACTIVE VENTILATION

LEGED:

	REINFORCED CONCRETE
	STONE RIP-RAP
	EXISTING GROUND
	BACKFILL MATERIAL
	CIVIL STRUCTURE
	MECHANICAL EQUIPMENT
	CIVIL EQUIPMENT
	WATER LEVEL
	EXISTING TERRAIN

! ALL EDGES ON THE NOTCH OF THE BYWASH AND FISHPASS (VERTICAL & HORIZONTAL) ARE CHAMFERED. !

REVISION	MODIFICATION DESCRIPTION	PROJECT MANAGER	
A	MAINTENANCE STEP, ROCKY RAMPS FOR FISH PASSAGE	M. ŠTRONER	
B	FISH PASS CONSTRUCTION	M. ŠTRONER	
C	FISH PASS & ROCKY RAMP CORRECTION	M. ŠTRONER	
D	ROCKY RAMP VARIATION TO BYWASH	M. ŠTRONER	
DRAWN BY T. GOMBOŠ		PROJECT MANAGER	
CHECKED BY M. ŠTRONER		SITE CLAERWEN	
APPROVED BY M. ŠTRONER		COUNTRY UK, WALES	
CLIENT ...		ALTITUDE SYSTEM	
HYDROPOL Project & Management u.s. Všehrdova 560/2, 118 00 PRAHA CZECH REPUBLIC www.hydropol.cz			
PROJECT SHPP CLAERWEN		DATE	07/2018
PART CONCEPTUAL DESIGN		SHEETS	8x44
DRAWING NAME INTAKE - GROUND PLAN & SECTION		SCALE	1:100, 1:75
		ARCHIVE No.	2140003D