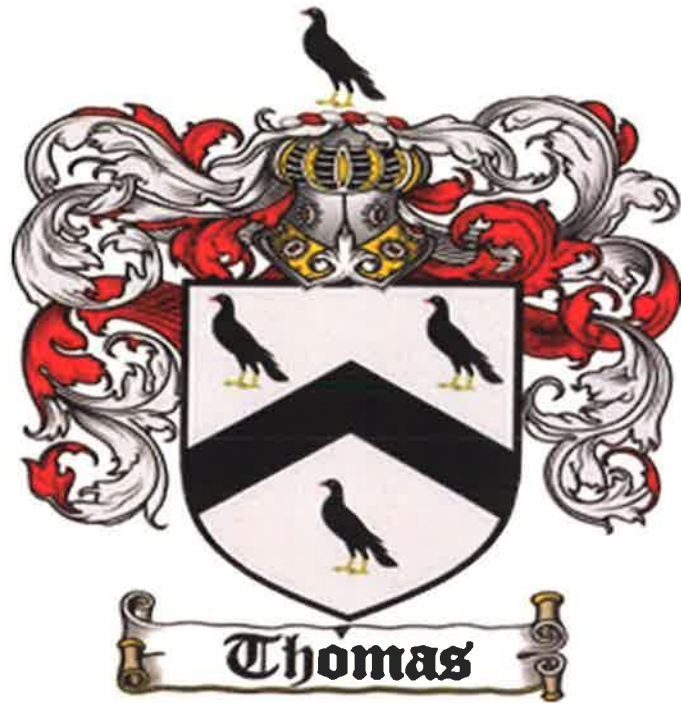


# **Hefin Thomas**

## **Agri Contractors Ltd**



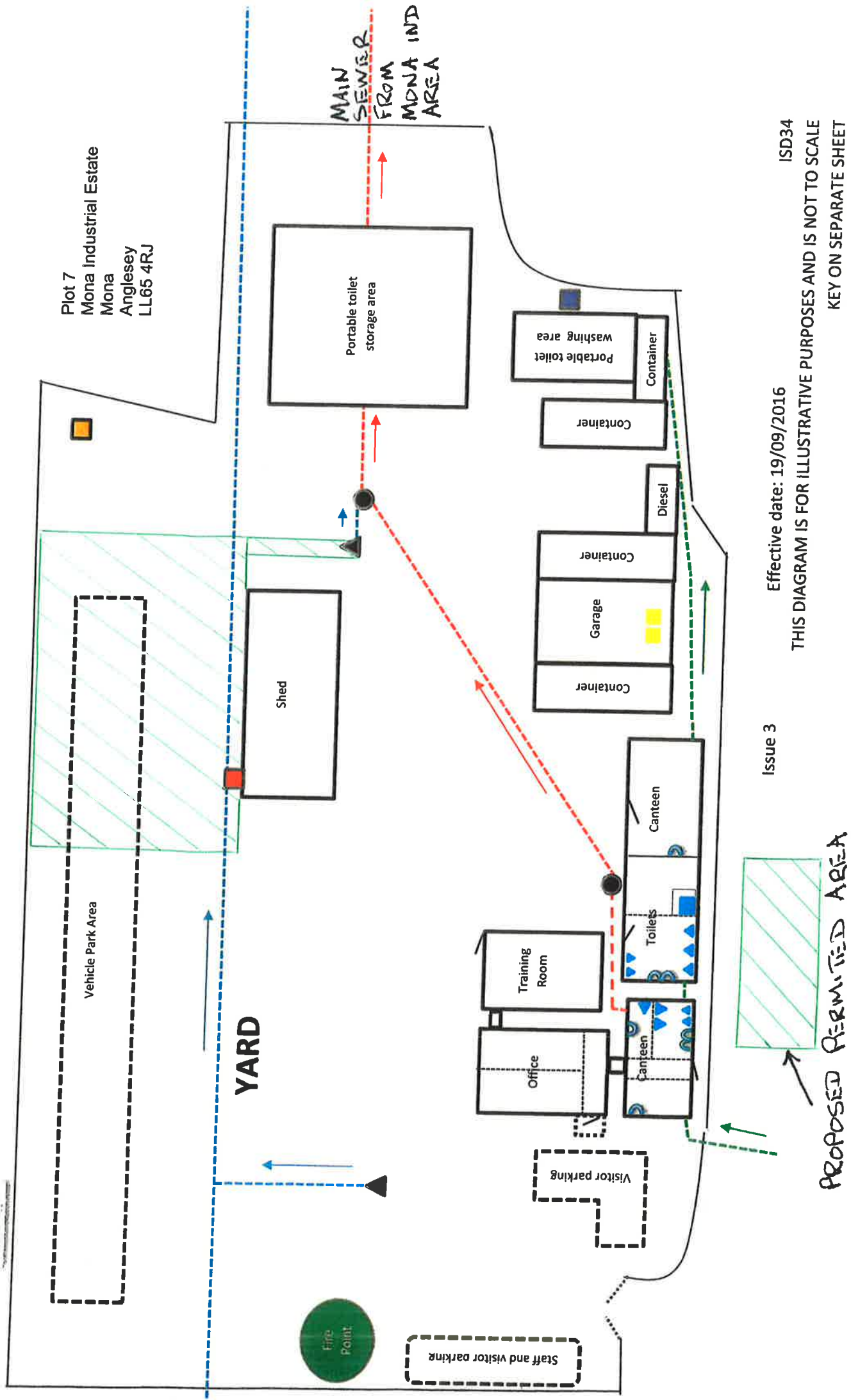
### **Site plans and maps**



**Hefin Thomas**

Agri Contractors Ltd

## Site Plan: Water, Drainage and Waste

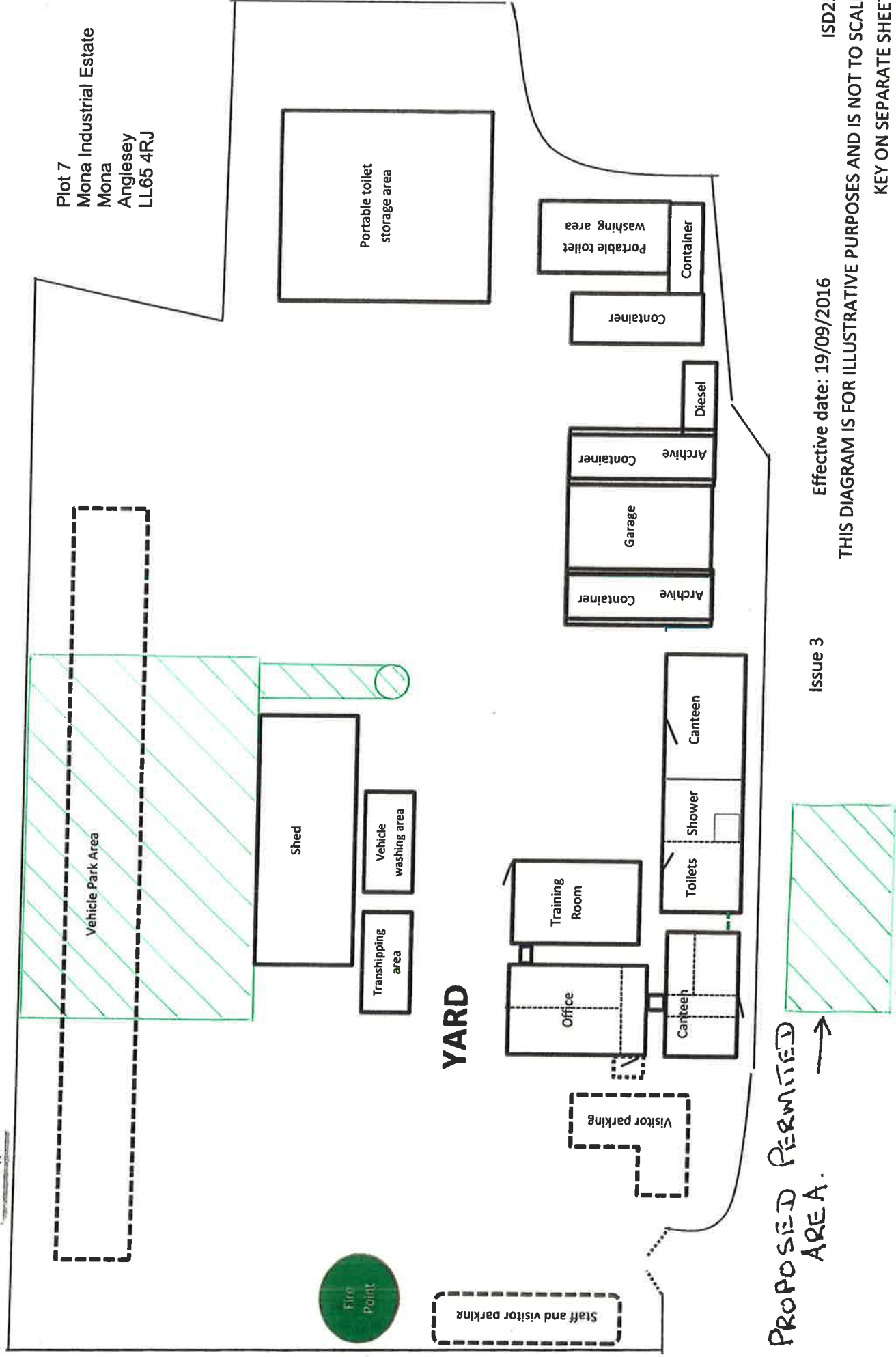




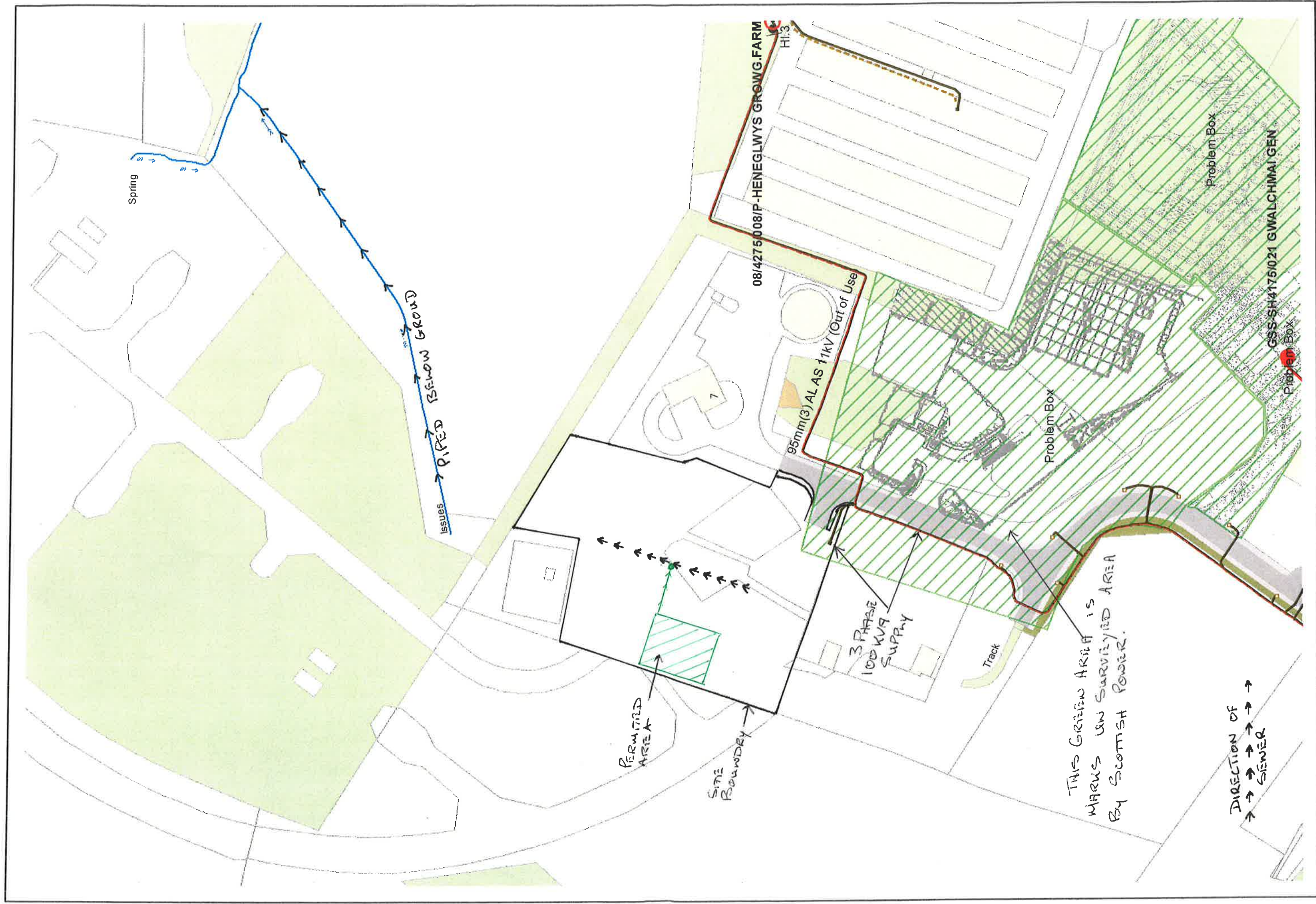
**Hefin Thomas**

Agri Contractors Ltd

## Facilities and Layout







POWER CABLES IN RED  
SUB SURFACE

SITE AREA BOUNDARY 1 CM = 18 M SCALE.  
SIZE 100M X 200M







Find details of permitted waste sites in Wales

Businesses in Wales that use, recycle, treat, store or dispose of waste need a permit from Natural Resources Wales to legally operate.

By using our Waste Permit Map you can find information about the sites with a waste permit, including:

- type of waste facility
- name of applicant
- capacity
- permit number

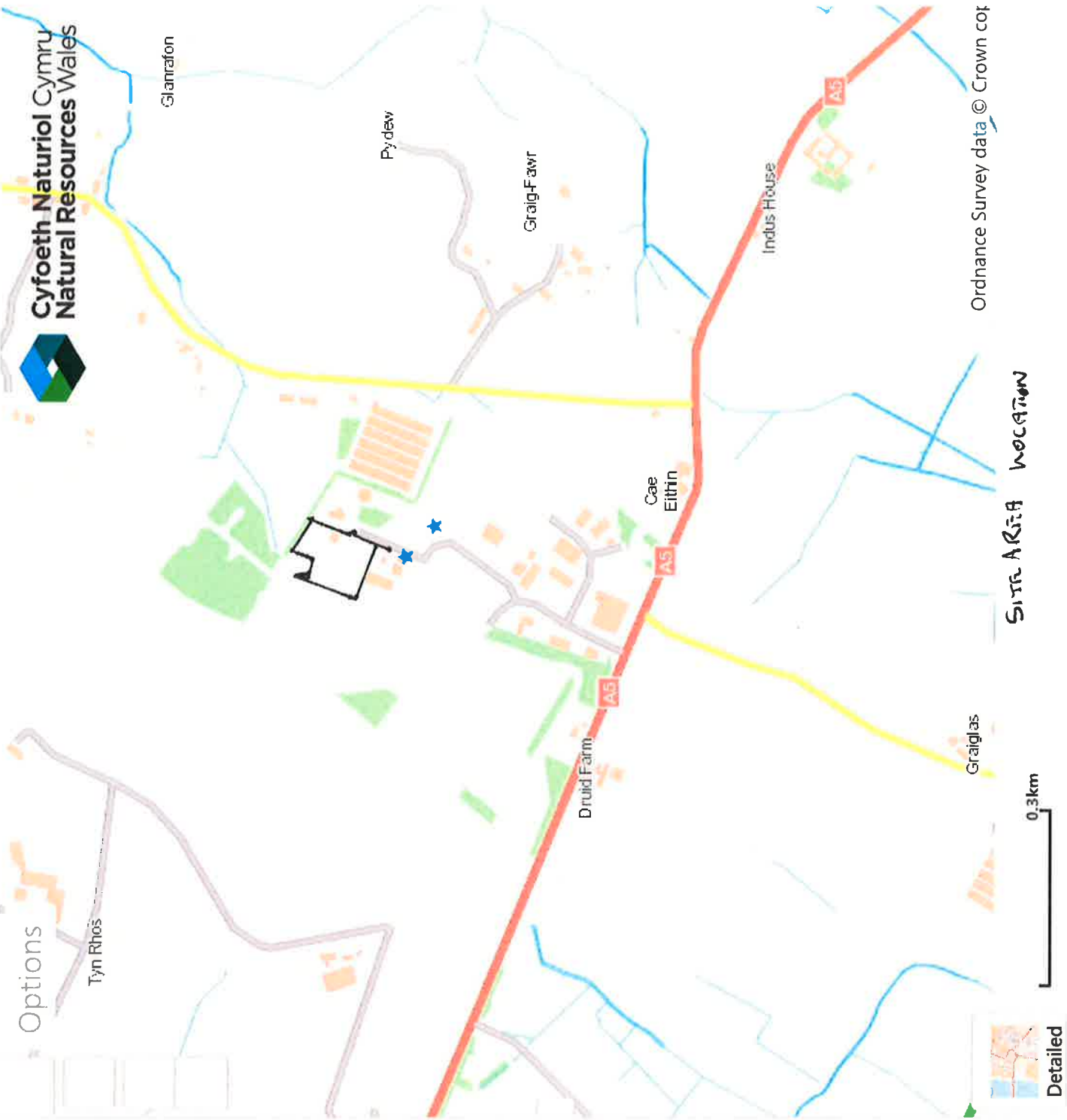
The data represented on the map reflects the information we hold in relation to permitted waste sites in Wales.

Please be aware there is delay between issuing permitting decisions and the data appearing on the map.

Further information

If you are looking for a location where you can take items for recycling visit [Recycle For Wales](#).

You can find information for waste sites, including details of the landfill allowance scheme and statutory recycling details for local authorities on the [Natural Resources Wales](#) website.



SITE AREA LOCATION

Ordinance Survey data © Crown copyright



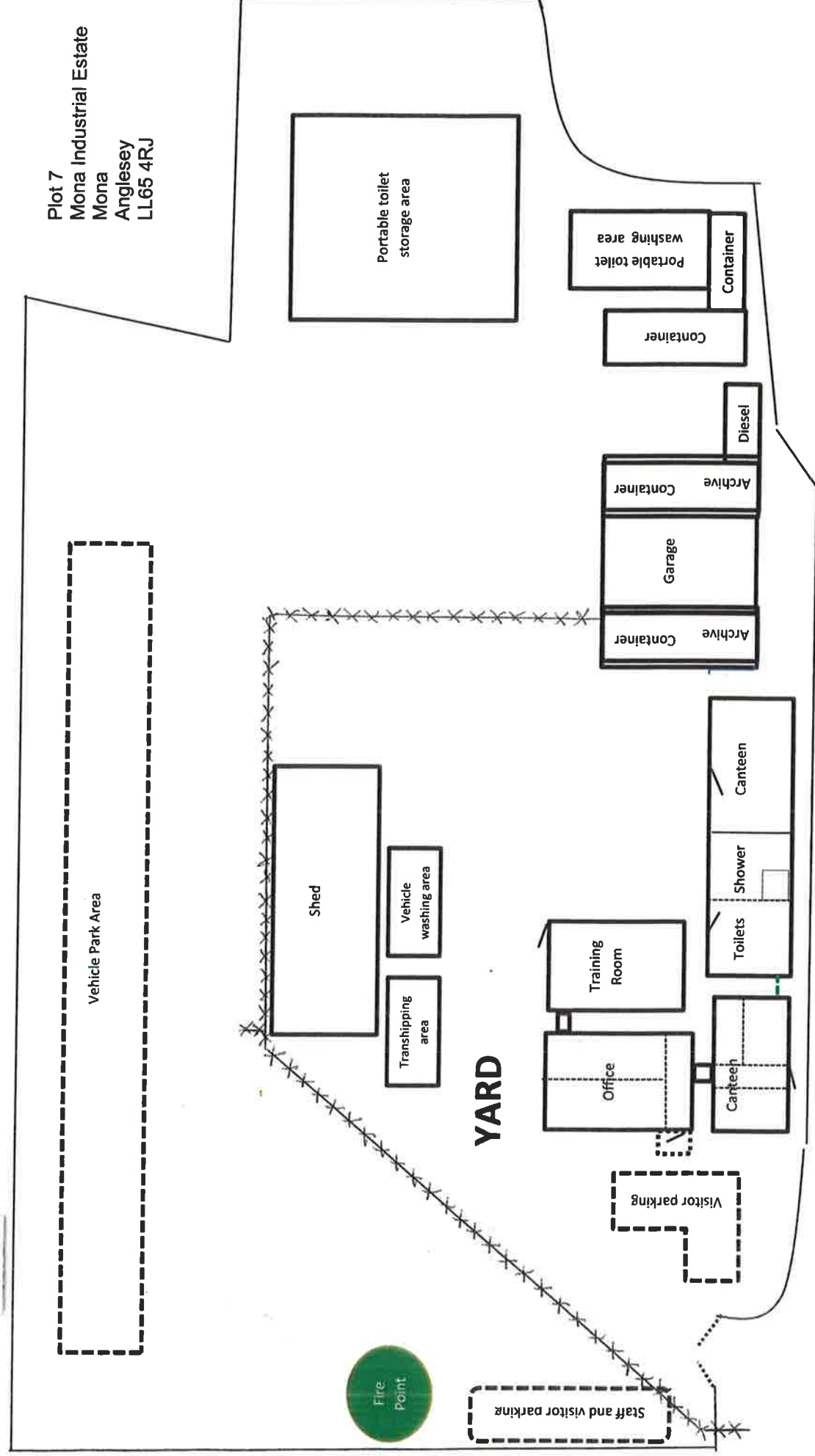


**Hefin Thomas**

Agri Contractors Ltd

3 Phase Supply.

## Facilities and Layout



Issue 3

Effective date: 19/09/2016

ISD25

THIS DIAGRAM IS FOR ILLUSTRATIVE PURPOSES AND IS NOT TO SCALE  
KEY ON SEPARATE SHEET