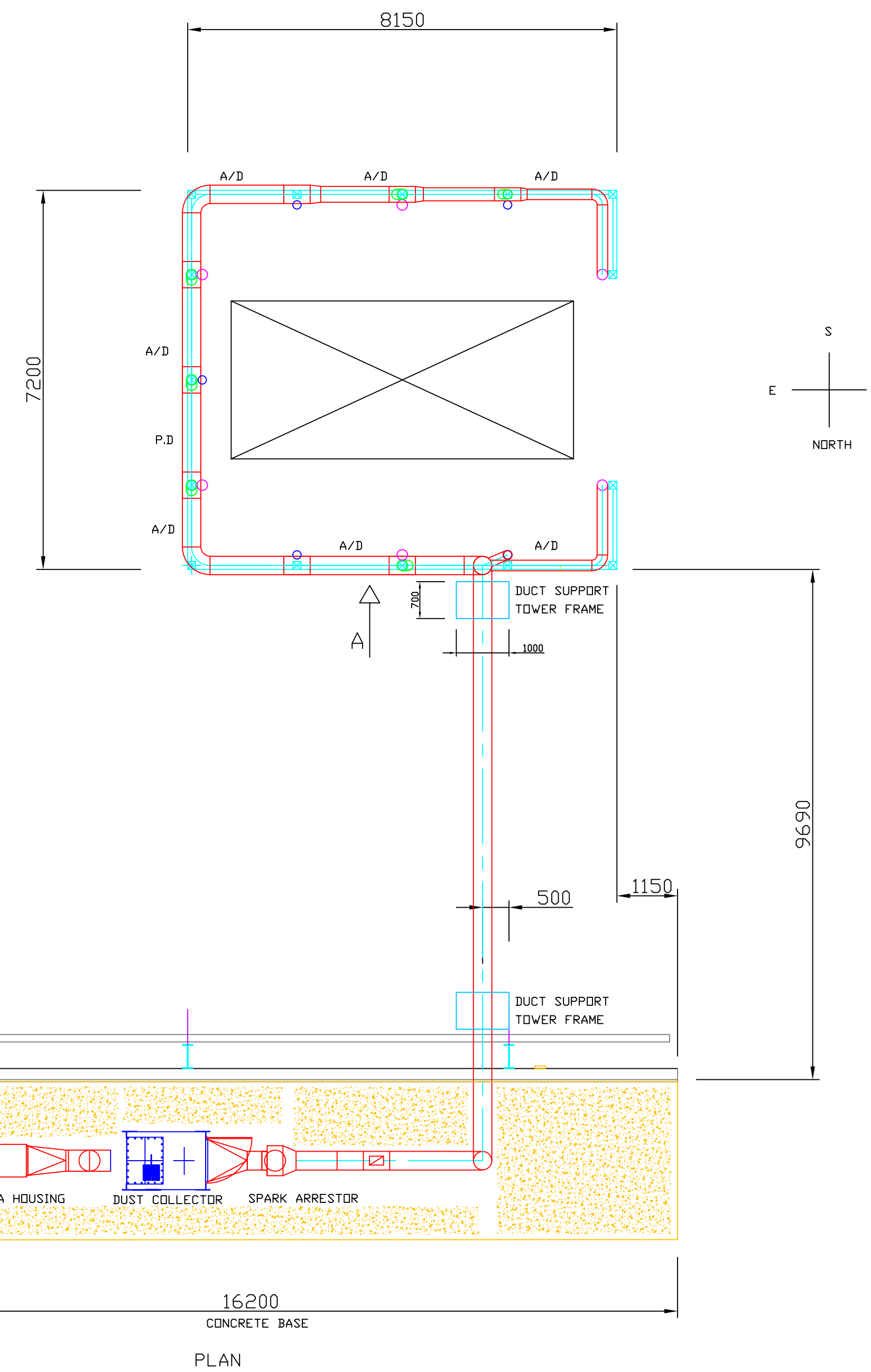
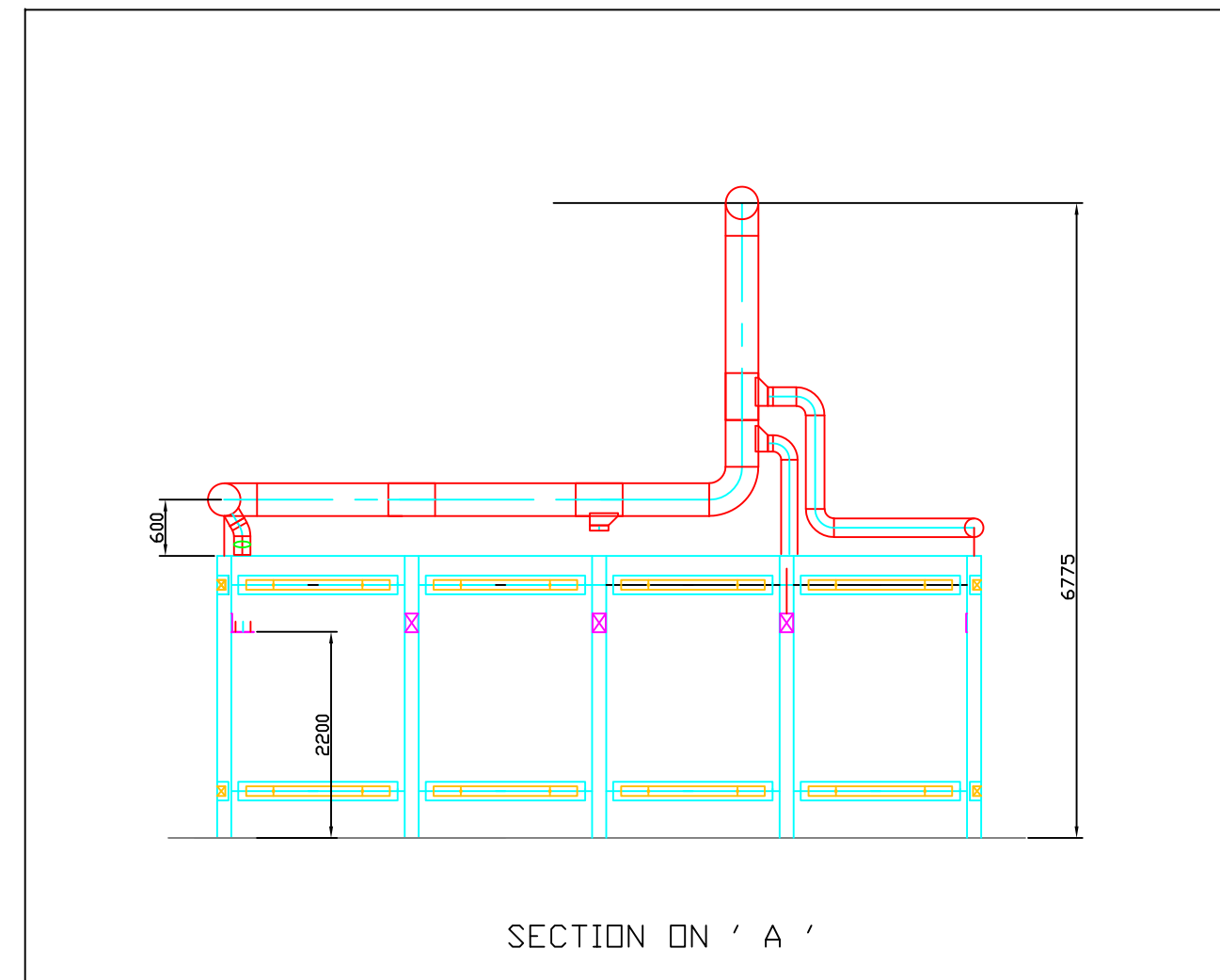
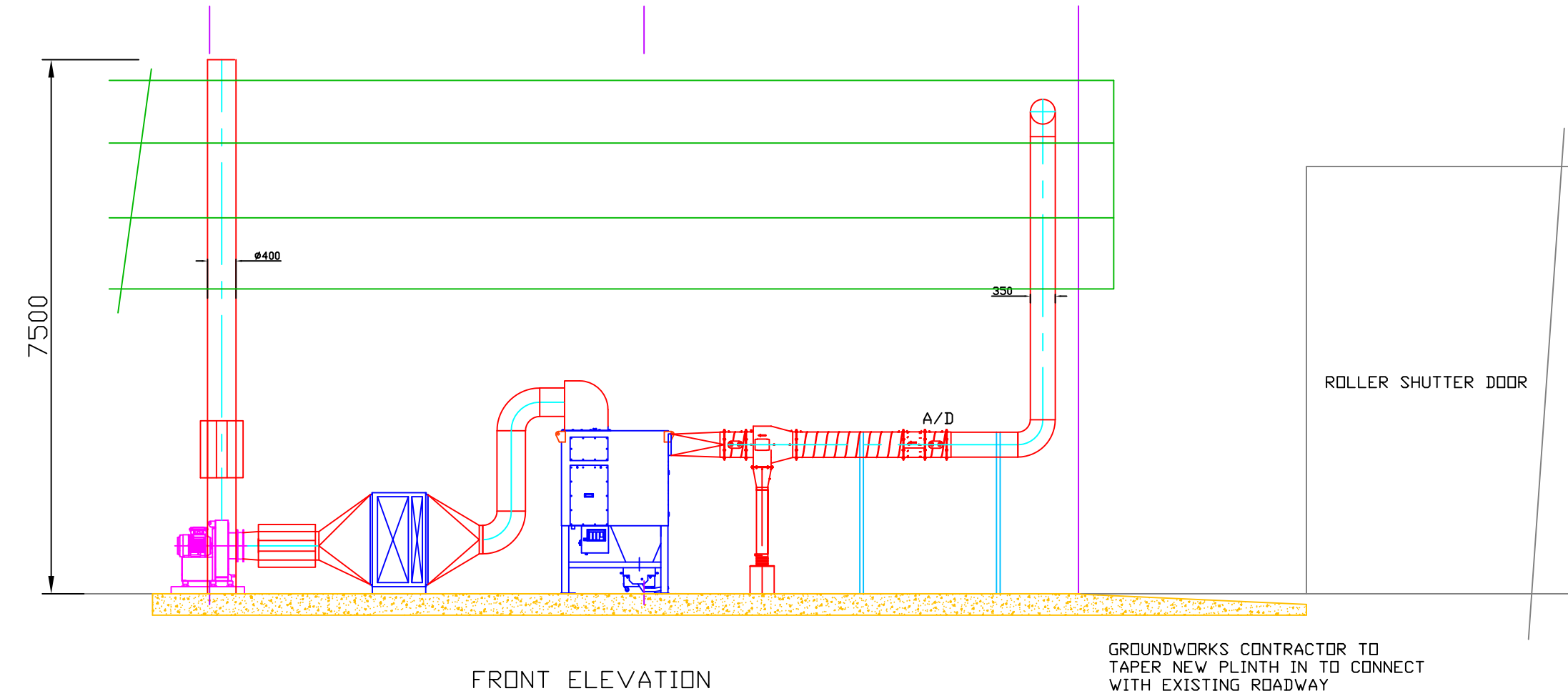


CONCRETE PLINTH TO BE 300MM THICK WITH A LAYER OF REINFORCING MESH (AS TYPICAL)



DUSCOVENT ENGINEERING LTD
86 WELLINGTON ROAD NORTH
HEATON NORRIS, STOCKPORT
CHESHIRE, SK4 1HT
TEL: 0161 480 4811
FAX: 0161 480 6503

This drawing is the property of Duscovent Engineering LTD. It must not be copied or lent to any third party without the written consent of Duscovent Engineering LTD and must be returned to Duscovent Engineering LTD on request or completion of contract.

REV A - 22MAY - MODS TO PLINTH DETAILS AND COMPASS POINT . BNT

Duscovent Engineering Limited

CLIENT

TITLE

**ARRANGEMENT OF DUST EXTRACTION
EQUIPMENT FOR BURNING BOOTH**

THIS DRAWING WAS PRODUCED USING AutoCAD - DO NOT CHANGE MANUALLY				A1
DRAWN	CS / BT	DATE	19 MAY 2020	
CHECKED		SCALE	1:100	
REVISION		DRAWING No.	DE3052.1	