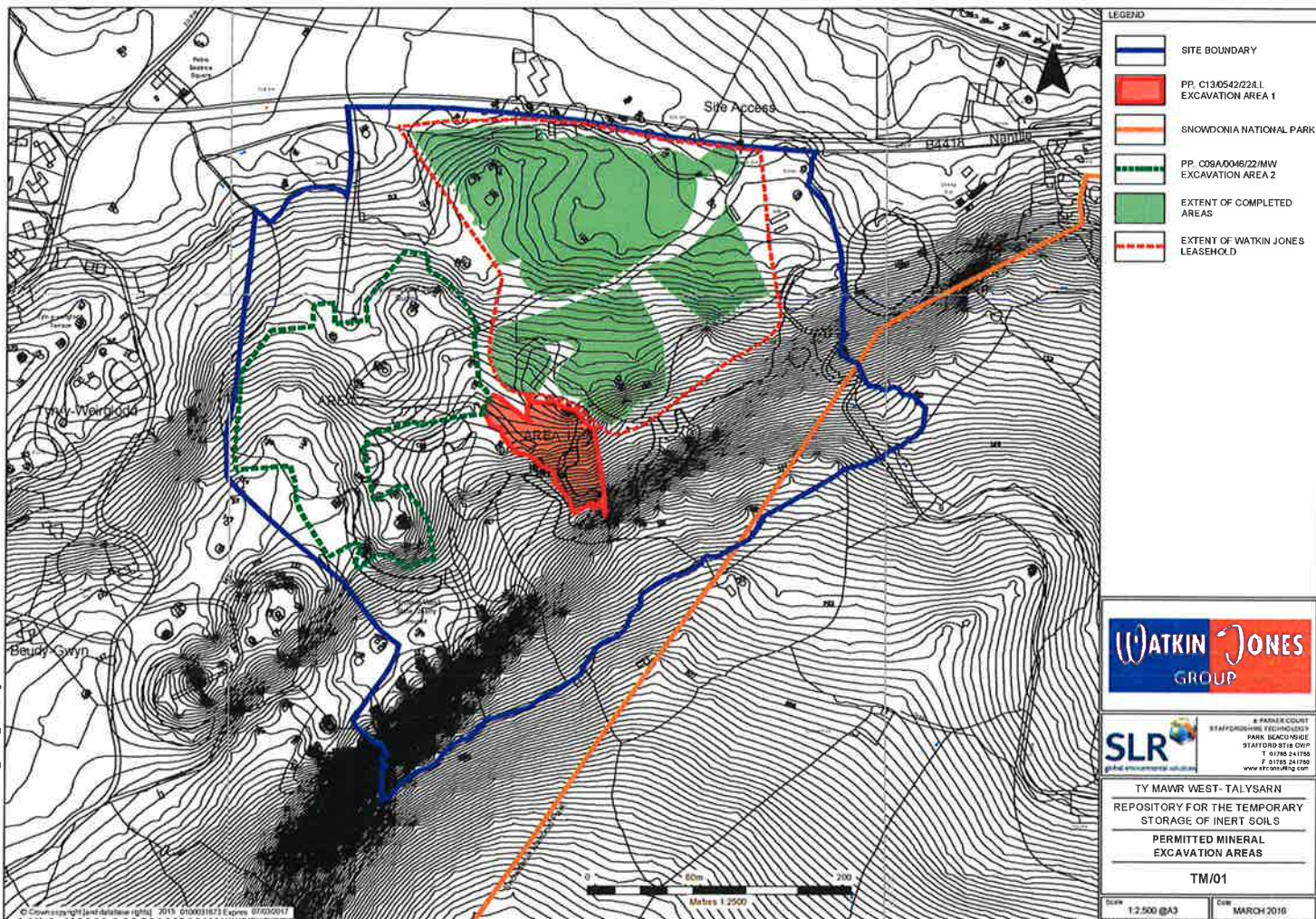


DRAWINGS

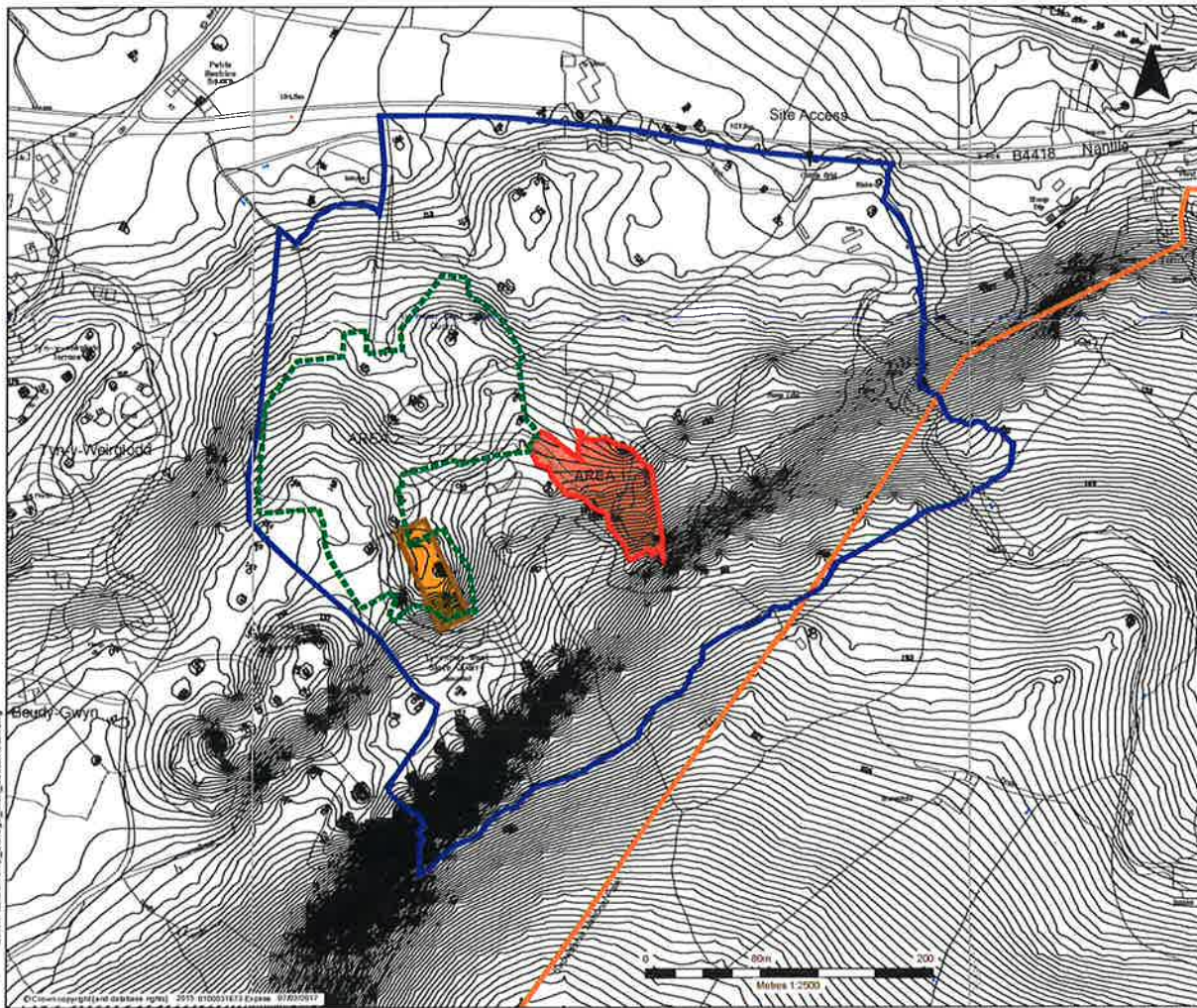
TM/01

**Permitted Mineral Excavation Areas
And Restored Areas**



TM/02

Temporary Storage – Inert Soils and Restoration



LEGEND	
	SITE BOUNDARY
	PP. C19/0542/22/LL EXCAVATION AREA 1
	SNOWDONIA NATIONAL PARK
	PP. C09/A0045/22/MW/ EXCAVATION AREA 2
	PP. C15/1020/22/LL REPOSITORY FOR TEMPORARY STORAGE OF INERT SOILS

8 PARKENHURST
STAFFORDSHIRE TRINITY
PARK, BACONGIST,
STAFFORDSHIRE
T 01829 241155
F 01829 241150
www.watkinjones.com
TY MAWR WEST-TALYSARN
REPOSITORY FOR THE TEMPORARY
STORAGE OF INERT SOILS
TEMPORARY STORAGE-INERT
SOILS AND RESTORATION
TM/02

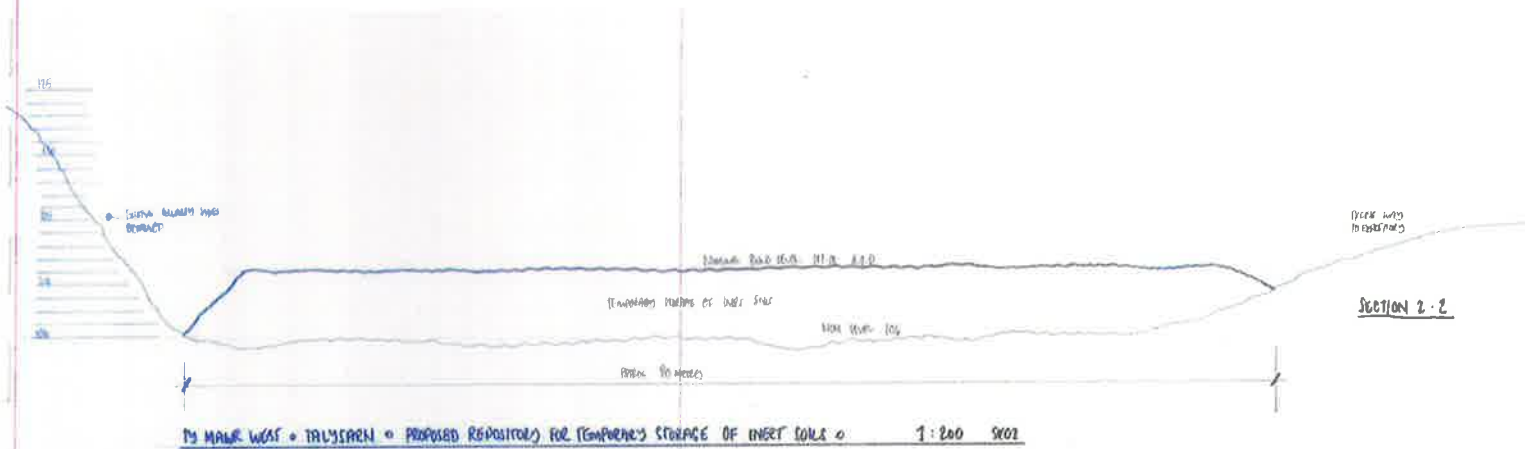
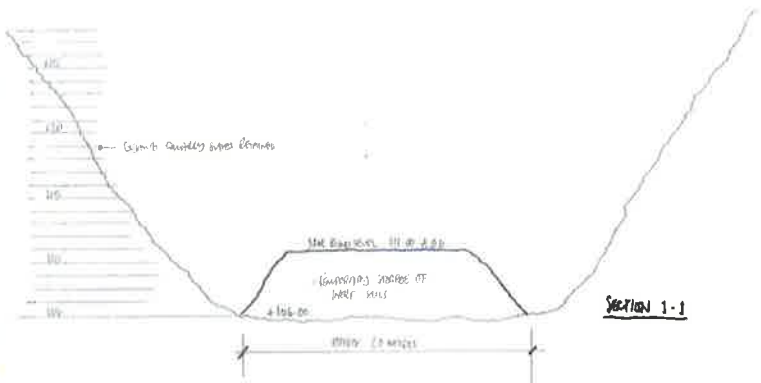
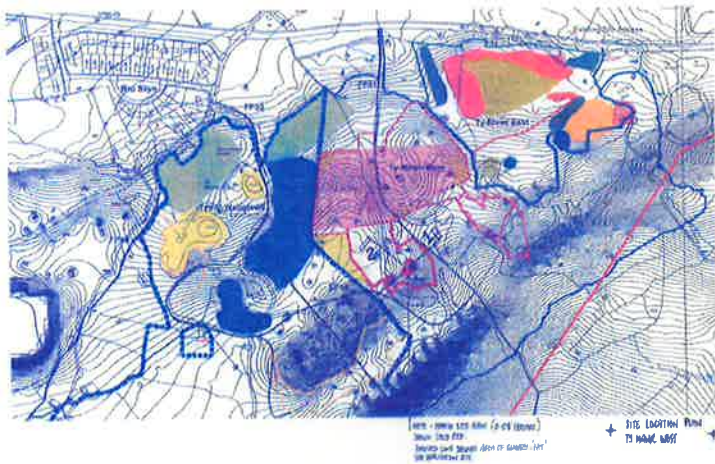
Scale	1:2,500 @A3
Date	MARCH 2016

08251 00001 20 TM/02 001 Ty Mawr West-Talysarn Site Storage Area 1

© This drawing and its content are the copyright of SLR Consulting Ltd and may not be reproduced or shared except by prior written permission. SLR Consulting Ltd accepts no liability for any amendments made by other persons.

WJ002

**Temporary Repository – Detail Location
and Sections**



1:200 5802

2720/1

Topographic Site Survey

DRAFT

