



## Historical Aerial Photography

Published 1947 - 1949

Source map scale - 1:10,560

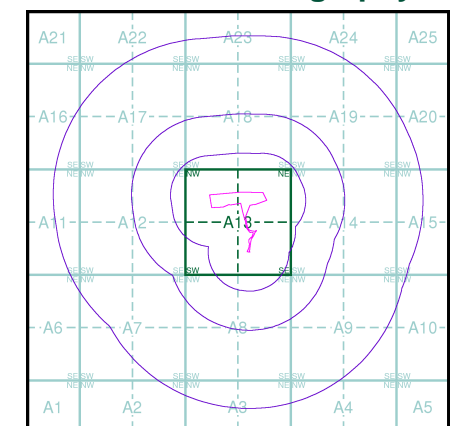
The Historical Aerial Photos were produced by the Ordnance Survey at a scale of 1:1,250 and 1:10,560 from Air Force photography. They were produced between 1944 and 1951 as an interim measure, pending preparation of conventional mapping, due to post war resource shortages. New security measures in the 1950's meant that every photograph was re-checked for potentially unsafe information with security sites replaced by fake fields or clouds. The original editions were withdrawn and only later made available after a period of fifty years although due to the accuracy of the editing, without viewing both revisions it is not easy to spot the edits. Where available Landmark have included both revisions.

© Landmark Information Group and/or Data Suppliers 2010.

### Map Name(s) and Date(s)

ST08SW 1949 1:10,560	ST08SE 1947 1:10,560
ST07NW 1947 1:10,560	ST07NE 1947 1:10,560

### Historical Aerial Photography - Slice A



LIBRARY  
HSILIRB

### Order Details

Order Number: 85780900\_1\_1  
Customer Ref: 13685 Ty Newydd Farm  
National Grid Reference: 306000, 181280  
Slice: A  
Site Area (Ha): 3.15  
Search Buffer (m): 1000

### Site Details

Site at 306040, 181410

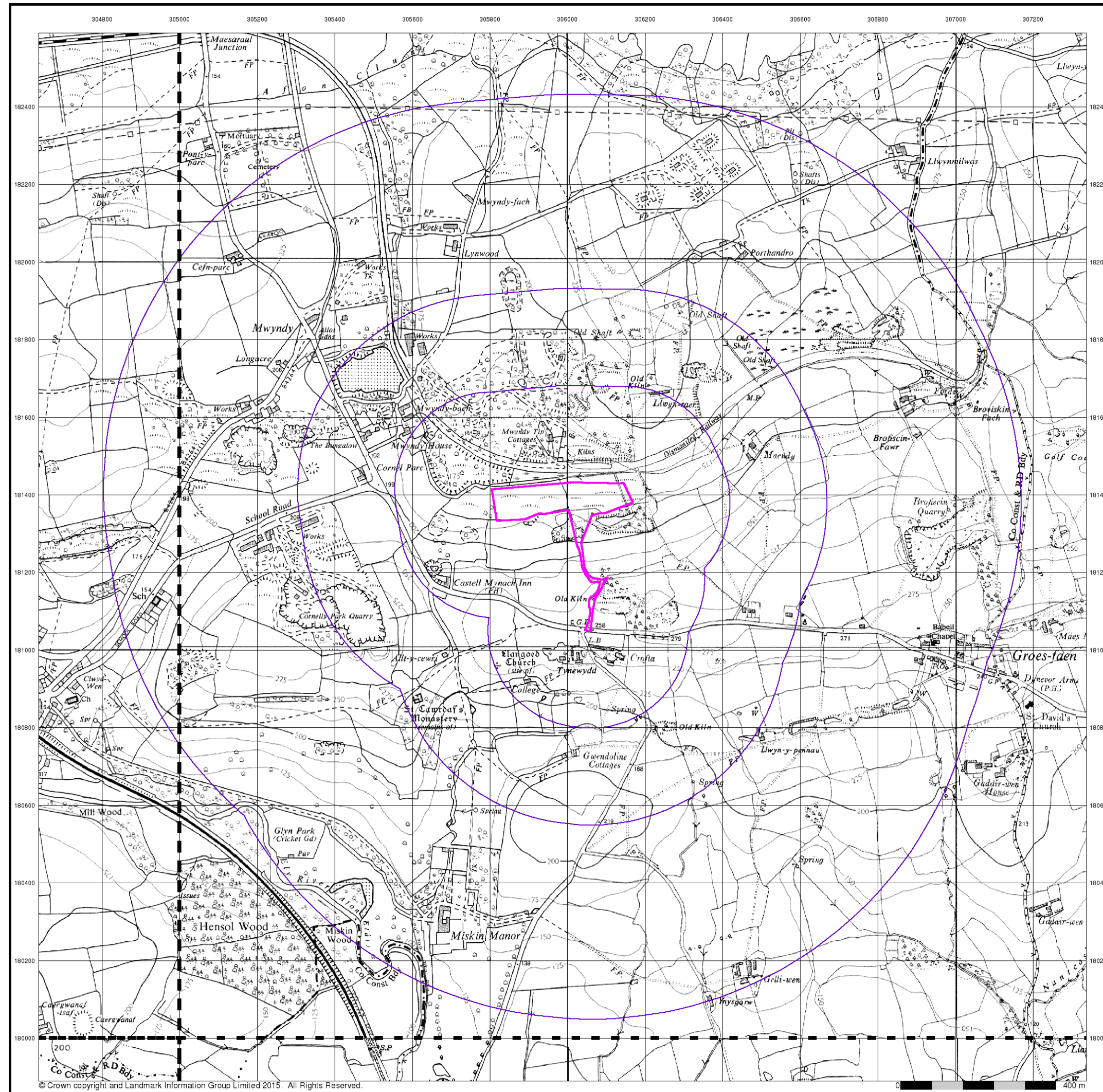


Tel: 0844 844 9952  
Fax: 0844 844 9951  
Web: [www.envirocheck.co.uk](http://www.envirocheck.co.uk)









© Crown copyright and Landmark Information Group Limited 2015. All Rights Reserved.



## Ordnance Survey Plan

Published 1964 - 1965

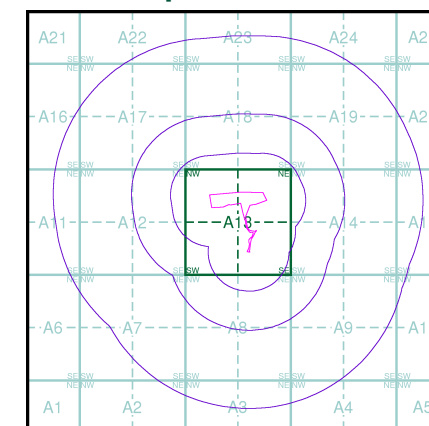
Source map scale - 1:10,000

The historical maps shown were reproduced from maps predominantly held at the scale adopted for England, Wales and Scotland in the 1840's. In 1854 the 1:2,500 scale was adopted for mapping urban areas; these maps were used to update the 1:10,560 maps. The published date given therefore is often some years later than the surveyed date. Before 1938, all OS maps were based on the Cassini Projection, with independent surveys of a single county or group of counties, giving rise to significant inaccuracies in outlying areas. In the late 1940's, a Provisional Edition was produced, which updated the 1:10,560 mapping from a number of sources. The maps appear unfinished - with all military camps and other strategic sites removed. These maps were initially overprinted with the National Grid. In 1970, the first 1:10,000 maps were produced using the Transverse Mercator Projection. The revision process continued until recently, with new editions appearing every 10 years or so for urban areas.

### Map Name(s) and Date(s)

ST08SW	ST08SE
1965	1964
1:10,560	1:10,560
ST07NW	ST07NE
1964	1964
1:10,560	1:10,560

### Historical Map - Slice A



### Order Details

Order Number: 85780900\_1\_1  
Customer Ref: 13685 Ty Newydd Farm  
National Grid Reference: 306000, 181280  
Slice: A  
Site Area (Ha): 3.15  
Search Buffer (m): 1000

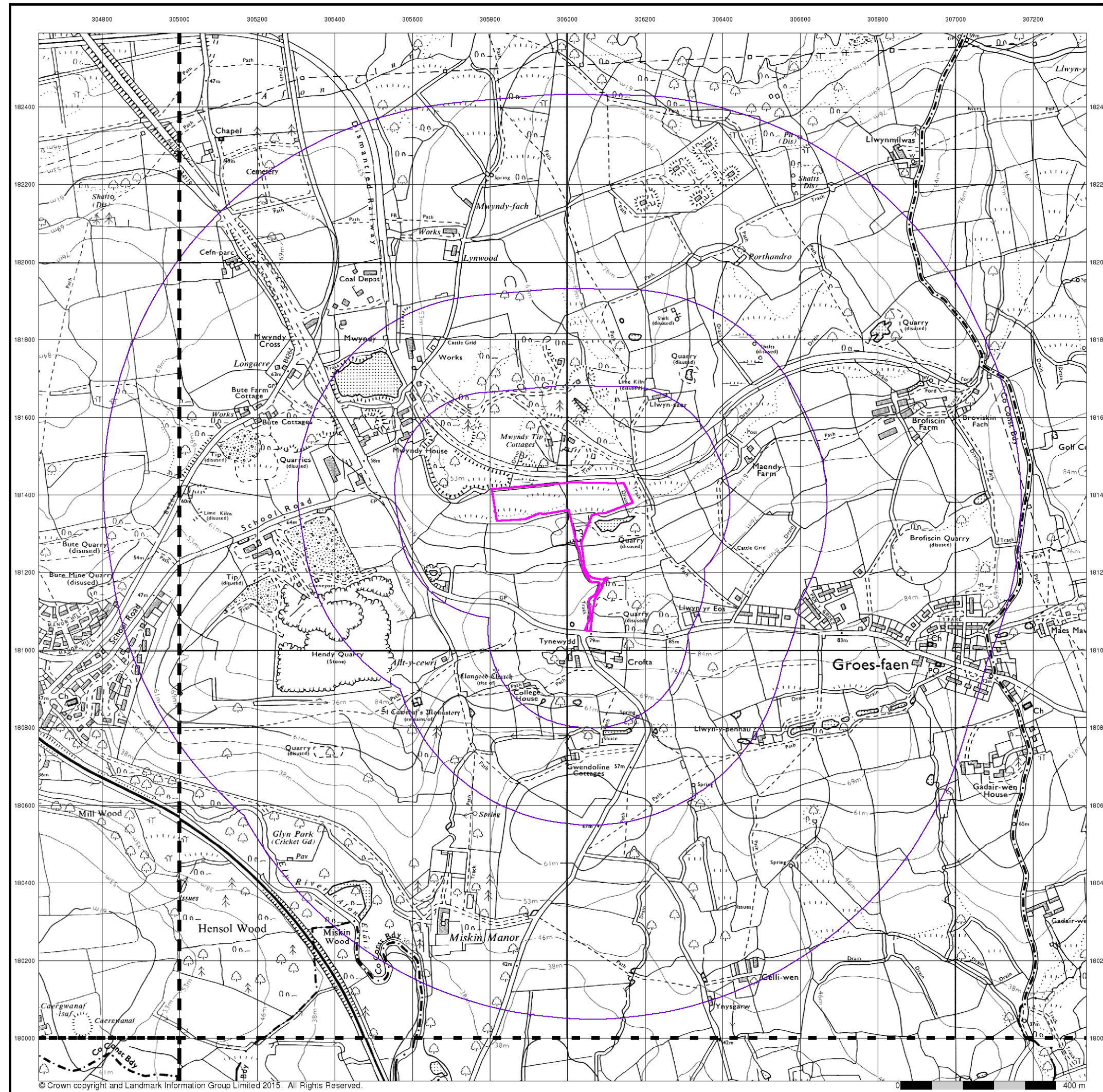
### Site Details

Site at 306040, 181410



Tel: 0844 844 9952  
Fax: 0844 844 9951  
Web: www.envirocheck.co.uk





© Crown copyright and Landmark Information Group Limited 2015. All Rights Reserved.



## Ordnance Survey Plan

Published 1974 - 1975

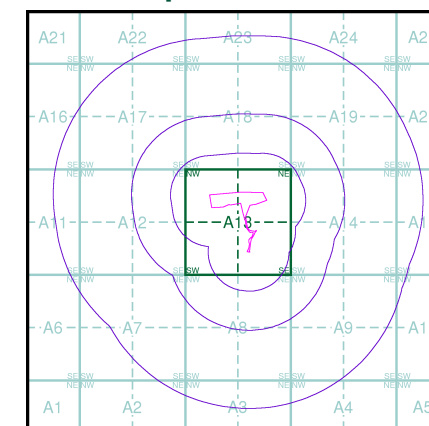
Source map scale - 1:10,000

The historical maps shown were reproduced from maps predominantly held at the scale adopted for England, Wales and Scotland in the 1840's. In 1854 the 1:2,500 scale was adopted for mapping urban areas; these maps were used to update the 1:10,560 maps. The published date given therefore is often some years later than the surveyed date. Before 1938, all OS maps were based on the Cassini Projection, with independent surveys of a single county or group of counties, giving rise to significant inaccuracies in outlying areas. In the late 1940's, a Provisional Edition was produced, which updated the 1:10,560 mapping from a number of sources. The maps appear unfinished - with all military camps and other strategic sites removed. These maps were initially overprinted with the National Grid. In 1970, the first 1:10,000 maps were produced using the Transverse Mercator Projection. The revision process continued until recently, with new editions appearing every 10 years or so for urban areas.

### Map Name(s) and Date(s)

ST08SW	ST08SE
1975	1974
1:10,000	1:10,000
ST07NW	ST07NE
1974	1975
1:10,000	1:10,000

### Historical Map - Slice A



### Order Details

Order Number: 85780900\_1\_1  
Customer Ref: 13685 Ty Newydd Farm  
National Grid Reference: 306000, 181280  
Slice: A  
Site Area (Ha): 3.15  
Search Buffer (m): 1000

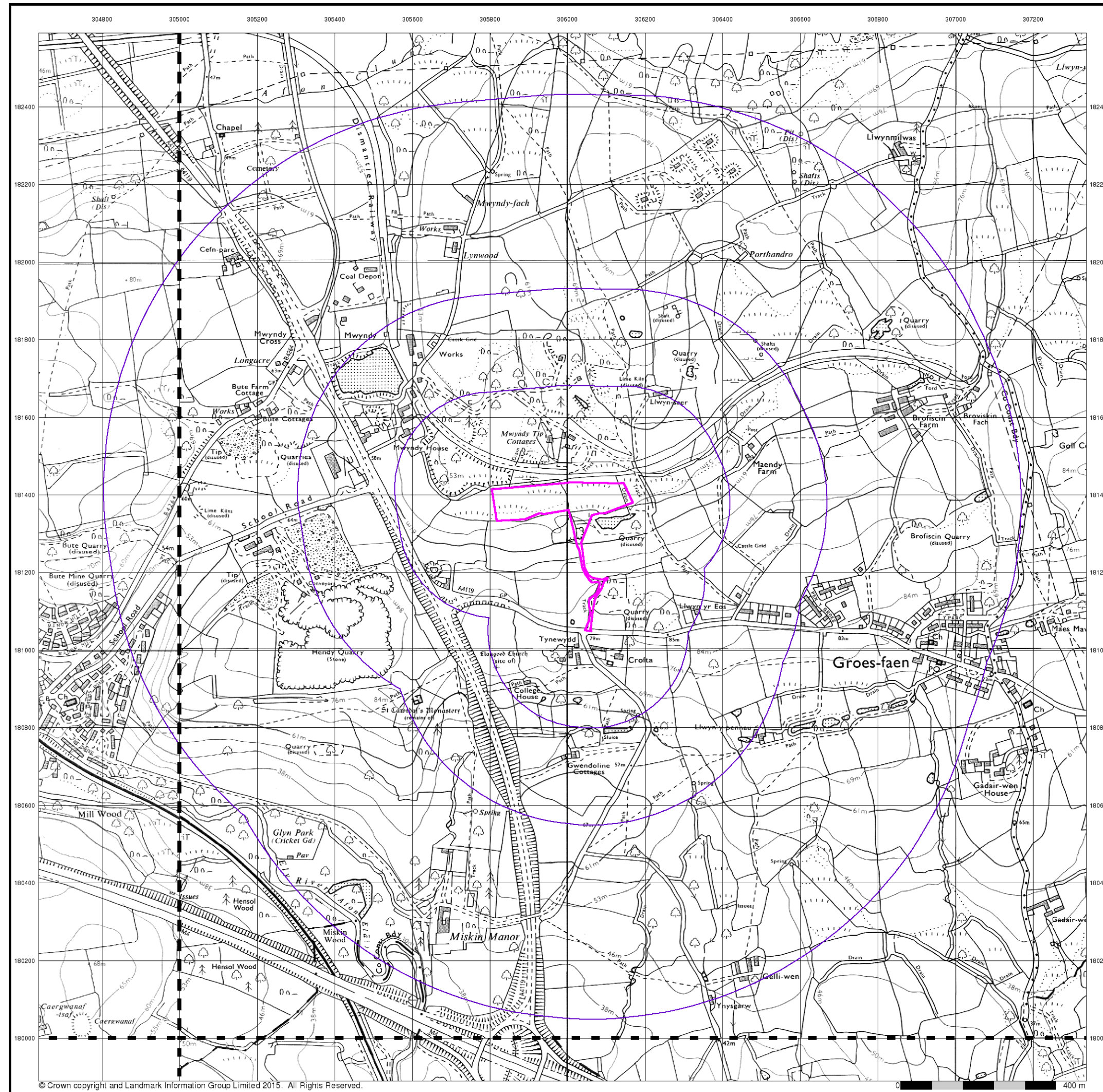
### Site Details

Site at 306040, 181410



Tel: 0844 844 9952  
Fax: 0844 844 9951  
Web: www.envirocheck.co.uk





© Crown copyright and Landmark Information Group Limited 2015. All Rights Reserved.



## Ordnance Survey Plan

Published 1980 - 1984

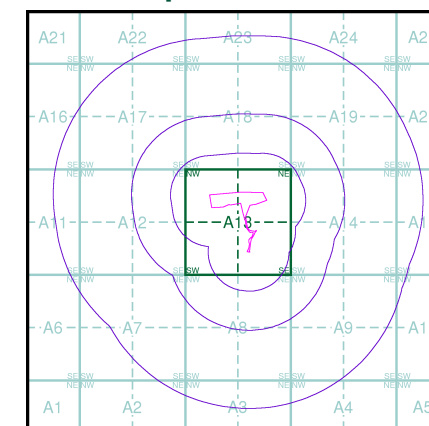
Source map scale - 1:10,000

The historical maps shown were reproduced from maps predominantly held at the scale adopted for England, Wales and Scotland in the 1840's. In 1854 the 1:2,500 scale was adopted for mapping urban areas; these maps were used to update the 1:10,560 maps. The published date given therefore is often some years later than the surveyed date. Before 1938, all OS maps were based on the Cassini Projection, with independent surveys of a single county or group of counties, giving rise to significant inaccuracies in outlying areas. In the late 1940's, a Provisional Edition was produced, which updated the 1:10,560 mapping from a number of sources. The maps appear unfinished - with all military camps and other strategic sites removed. These maps were initially overprinted with the National Grid. In 1970, the first 1:10,000 maps were produced using the Transverse Mercator Projection. The revision process continued until recently, with new editions appearing every 10 years or so for urban areas.

### Map Name(s) and Date(s)

ST08SW	ST08SE
1982	1980
1:10,000	1:10,000
	ST07NE
	1984
	1:10,000

### Historical Map - Slice A



### Order Details

Order Number: 85780900\_1\_1  
Customer Ref: 13685 Ty Newydd Farm  
National Grid Reference: 306000, 181280  
Slice: A  
Site Area (Ha): 3.15  
Search Buffer (m): 1000

### Site Details

Site at 306040, 181410



Tel: 0844 844 9952  
Fax: 0844 844 9951  
Web: www.envirocheck.co.uk